

**FL3X2-SDP-A-02-11 - New Pole**  
 OPP 17 MEDONTE CLOSE, FLEET, GU51 3NU  
**Pole\_Type:9M WOOD**  
**Surface Type:Tarmac**  
 Coordinates:  
 X=481679.17  
 Y=153807.44  
 Footpath width:1.8m  
 Verge width: m

Any modifications to the drawing or use of alternative items to those specified must be agreed with Toob's local planning department

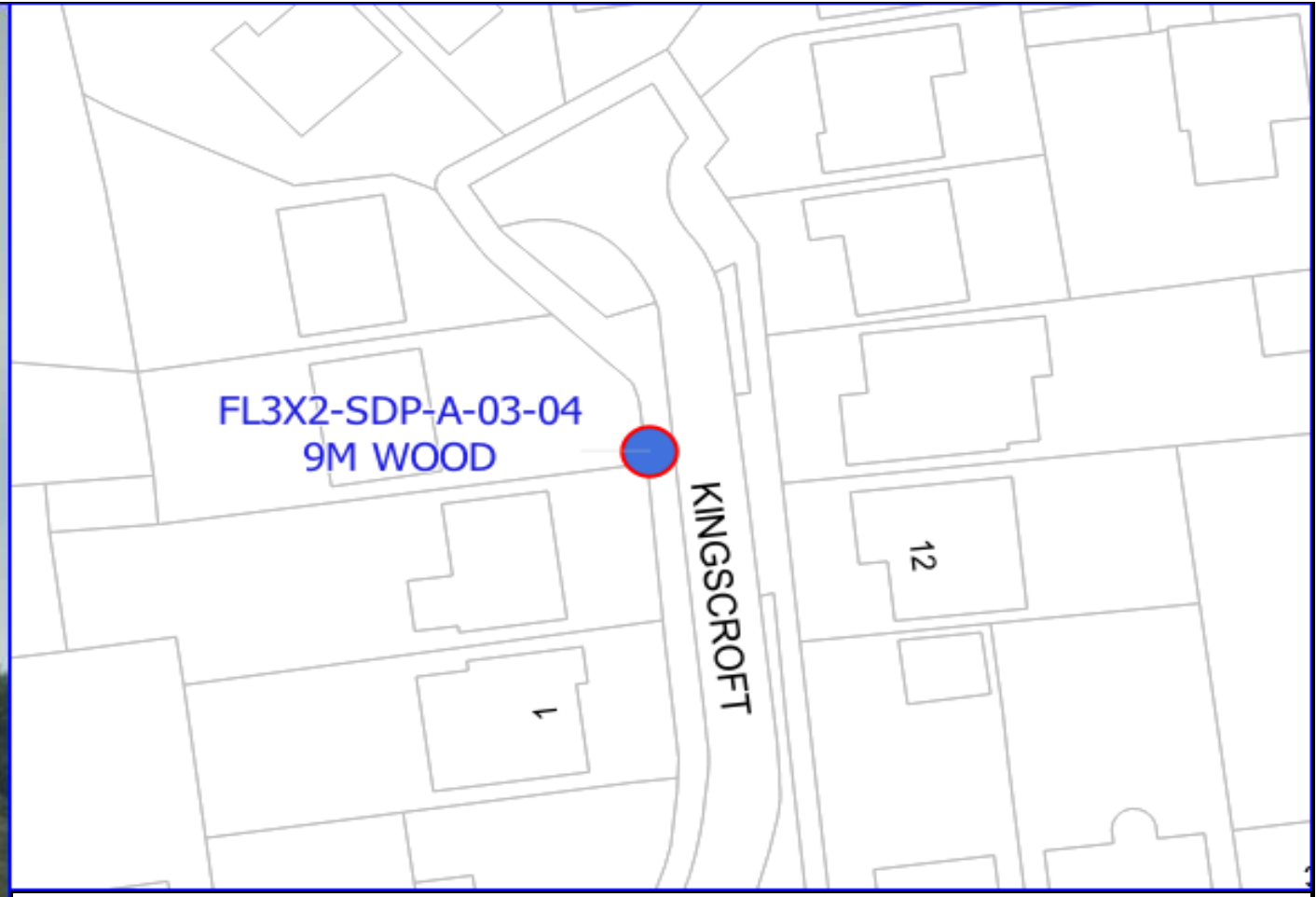
Reproduction from the Ordnance Survey map by Toob with permission of Ordnance Survey on behalf of Her Majesty's Stationary Office © Crown Copyright Toob

FL3X2-EXT-A-02-11

Originator	Cyient
Contact Number	0752598439
Issue Date	October 17, 2023
Office	Southampton
Line Manager	Di Godsave



Internal Use Only



**FL3X2-SDP-A-03-04 - New Pole**  
 S/O 3 KINGSCROFT, FLEET, GU51 3NH  
**Pole\_Type:9M WOOD**  
**Surface Type:Tarmac**  
 Coordinates:  
 X=481231.20  
 Y=153721.76  
 Footpath width:1.9m  
 Verge width: m

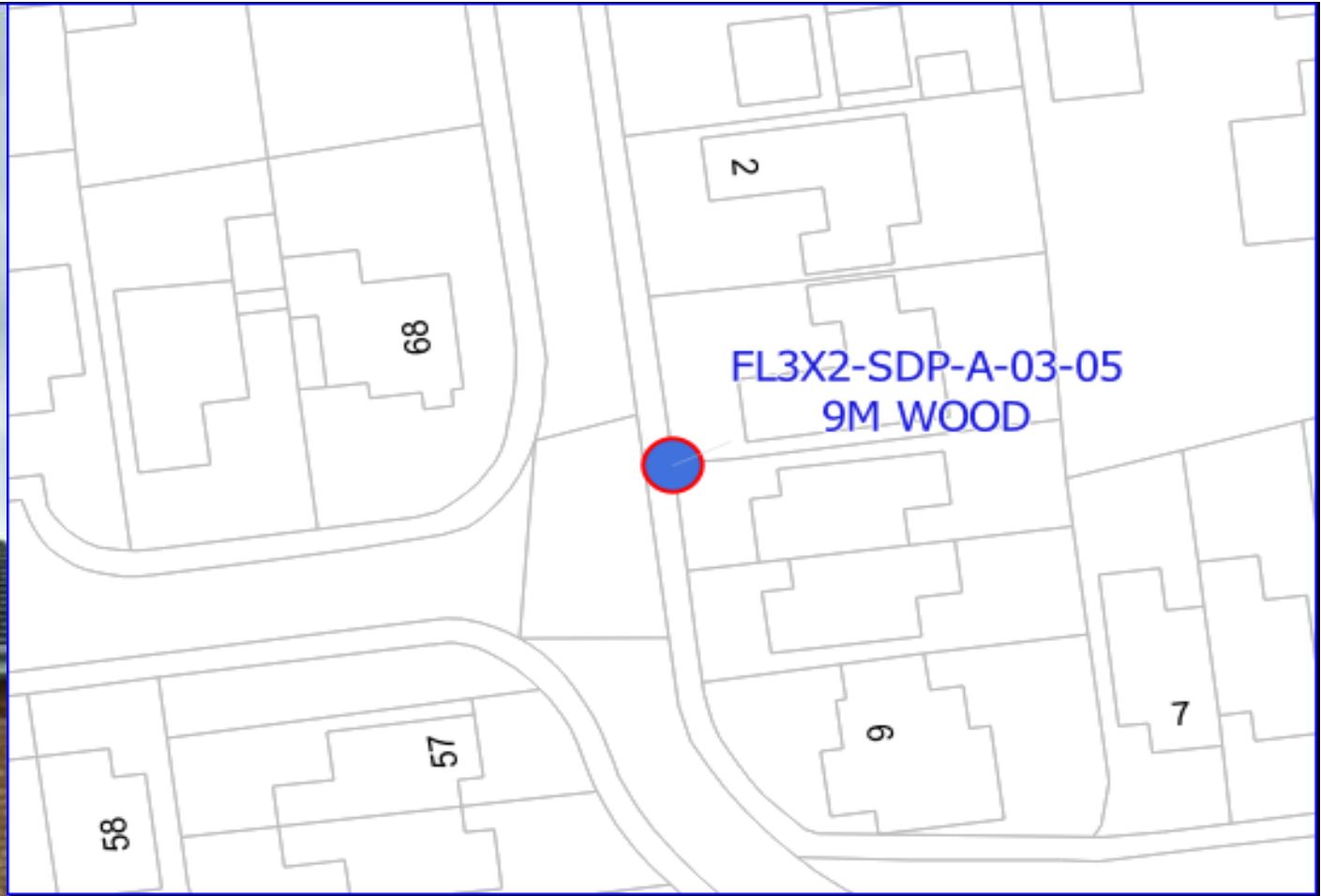
Any modifications to the drawing or use of alternative items to those specified must be agreed with Toob's local planning department

FL3X2-SDP-A-03-04

Originator	Cyient
Contact Number	0752598439
Issue Date	October 17, 2023
Office	Southampton
Line Manager	Di Godsave



Internal Use Only



**FL3X2-SDP-A-03-05 - New Pole**  
 S/O 3 HOLLAND GARDENS, FLEET, GU51 3NE  
**Pole\_Type:9M WOOD**  
**Surface Type:Tarmac**  
 Coordinates:  
 X=481236.27  
 Y=153594.62  
 Footpath width:1.8m  
 Verge width: m

Any modifications to the drawing or use of alternative items to those specified must be agreed with Toob's local planning department

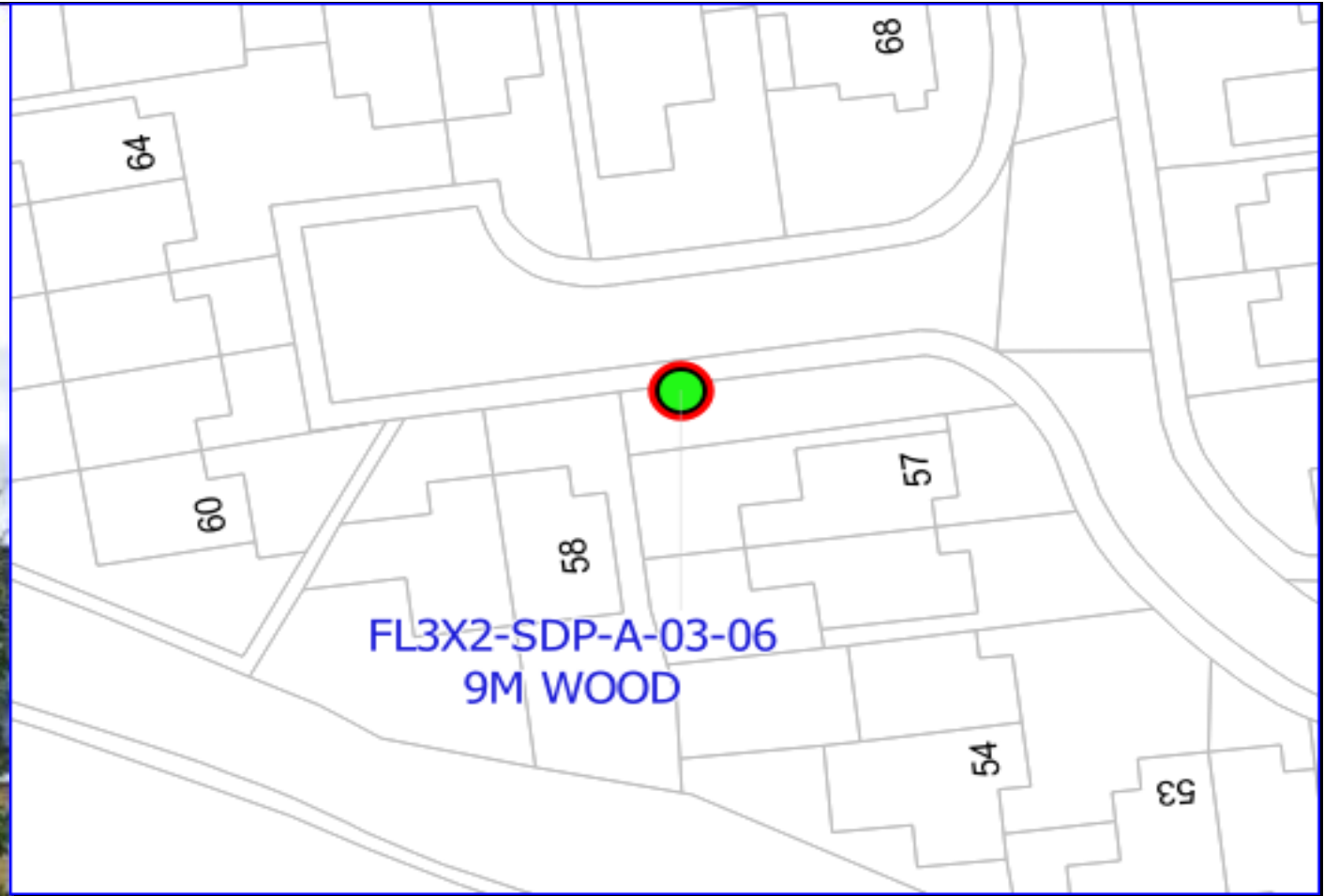
Reproduction from the Ordnance Survey map by Toob with permission of Ordnance Survey on behalf of Her Majesty's Stationary Office © Crown Copyright Toob

FL3X2-SDP-A-03-05

Originator	Cyient
Contact Number	0752598439
Issue Date	October 17, 2023
Office	Southampton
Line Manager	Di Godsave



Internal Use Only



**FL3X2-SDP-A-03-06 - New Pole**  
 OPP 67 HOLLAND GARDENS, FLEET, GU51 3NF  
**Pole\_Type:9M WOOD**  
**Surface Type:Verge**  
 Coordinates:  
 X=481206.67  
 Y=153579.43  
 Footpath width:1.6m  
 Verge width:5.0+m

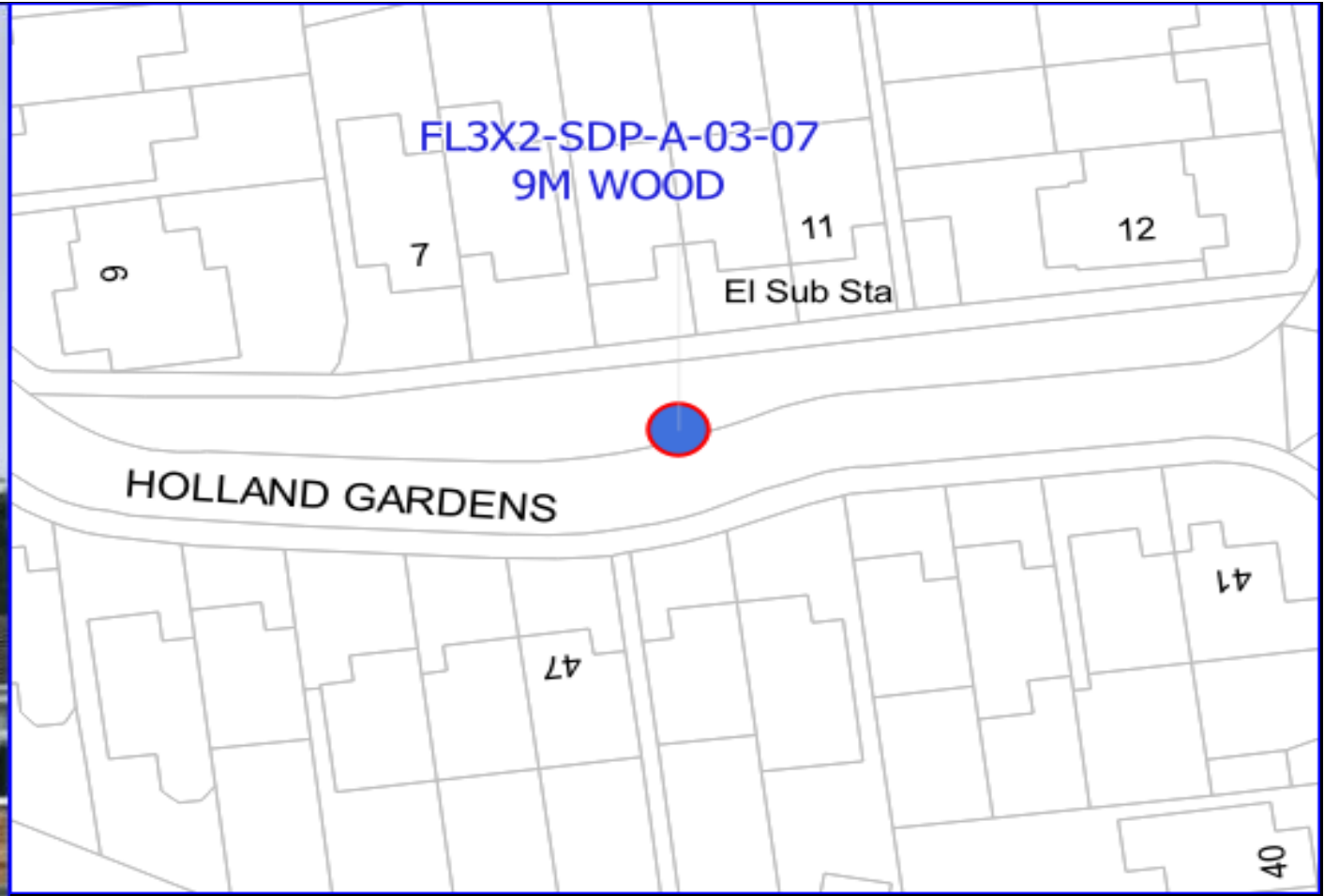
Any modifications to the drawing or use of alternative items to those specified must be agreed with Toob's local planning department

FL3X2-SDP-A-03-06

Originator	Cyient
Contact Number	0752598439
Issue Date	October 17, 2023
Office	Southampton
Line Manager	Di Godsave



Internal Use Only



**FL3X2-SDP-A-03-07 - New Pole**  
 O/S 9 HOLLAND GARDENS, FLEET, GU51 3NE  
**Pole\_Type:9M WOOD**  
**Surface Type:Verge**  
 Coordinates:  
 X=481285.62  
 Y=153563.78  
 Footpath width:m  
 Verge width: 5.0+m

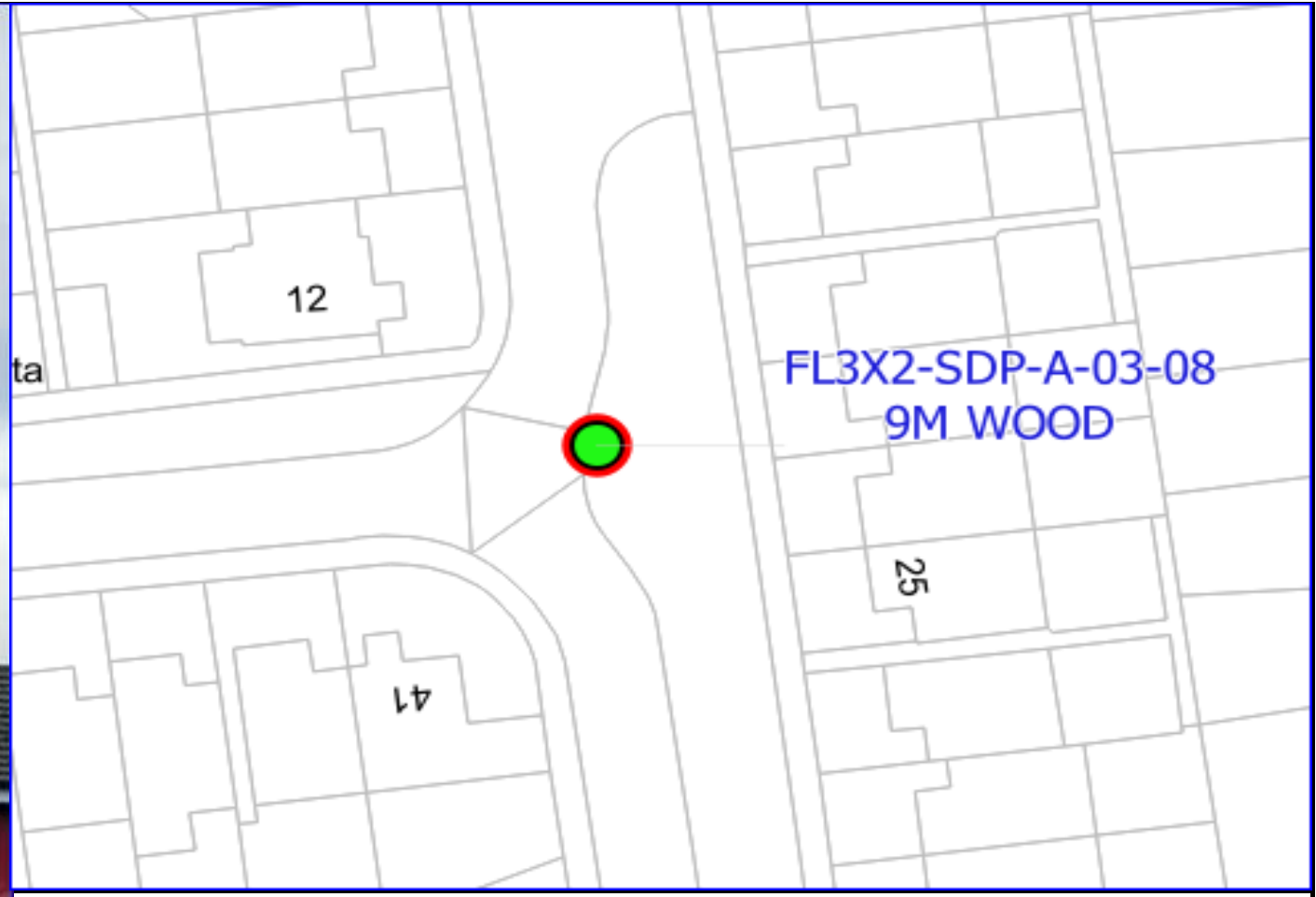
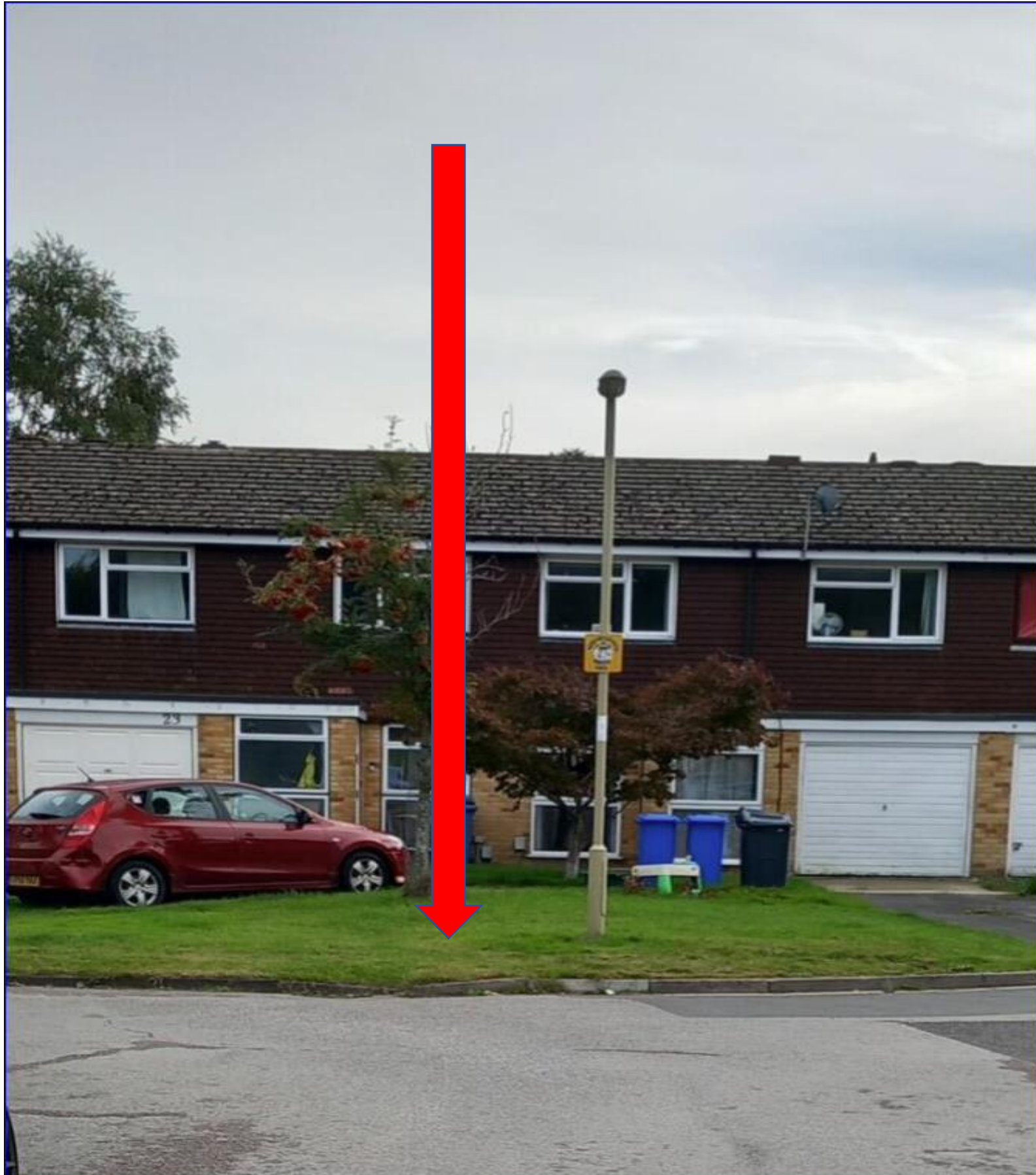
Any modifications to the drawing or use of alternative items to those specified must be agreed with Toob's local planning department

FL3X2-SDP-A-03-07

Originator	Cyient
Contact Number	0752598439
Issue Date	October 17, 2023
Office	Southampton
Line Manager	Di Godsave



Internal Use Only



**FL3X2-SDP-A-03-08 - New Pole**  
 O/S 23 HOLLAND GARDENS, FLEET, GU51 3NE  
**Pole\_Type:9M WOOD**  
**Surface Type:Verge**  
 Coordinates:  
 X=481331.80  
 Y=153569.12  
 Footpath width:m  
 Verge width:5.0+m

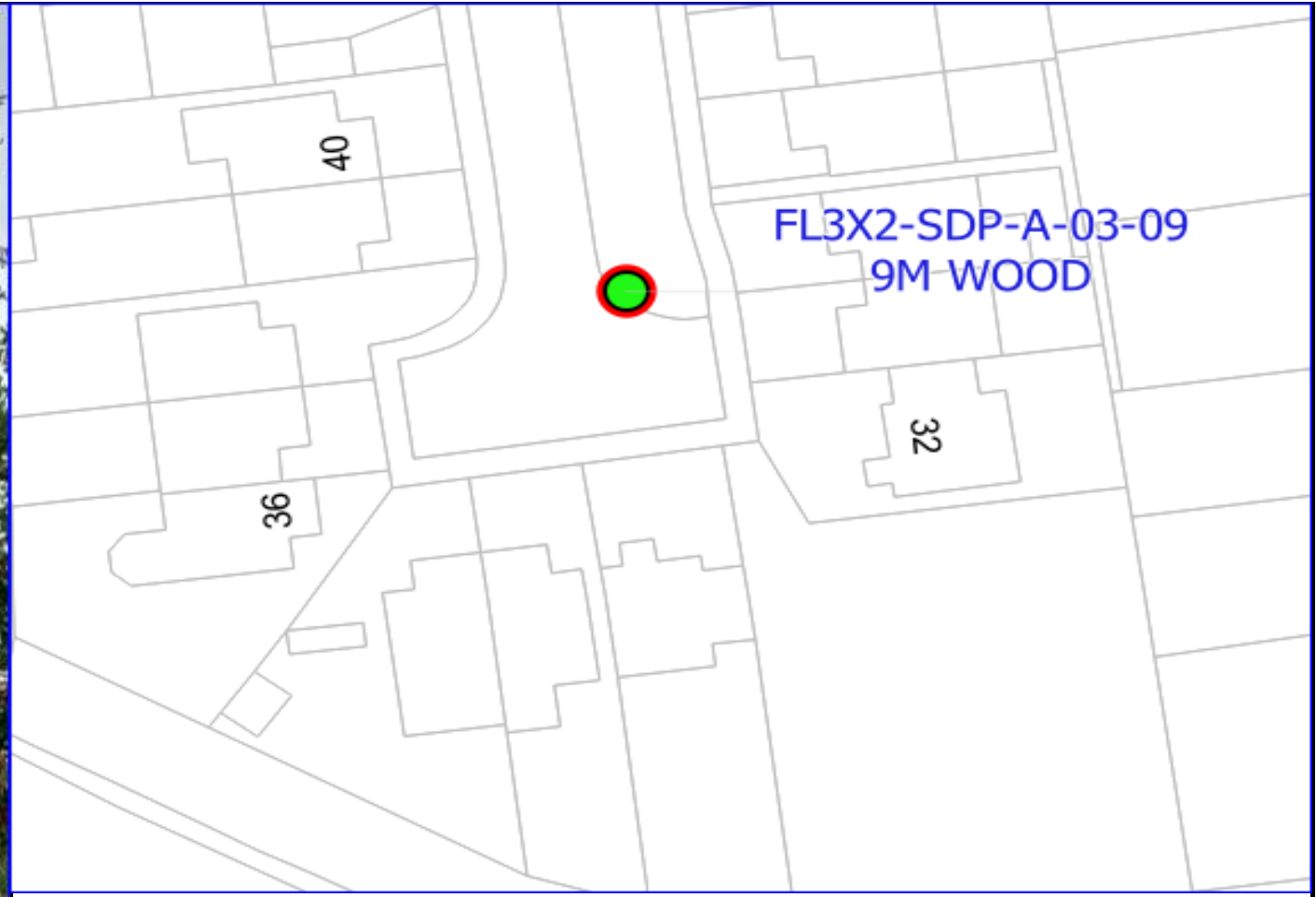
Any modifications to the drawing or use of alternative items to those specified must be agreed with Toob's local planning department

FL3X2-SDP-A-03-08

Originator	Cyient
Contact Number	0752598439
Issue Date	October 17, 2023
Office	Southampton
Line Manager	Di Godsave



Internal Use Only



**FL3X2-SDP-A-03-09 - New Pole**  
 O/S 30 HOLLAND GARDENS, FLEET, GU51 3NE  
**Pole\_Type:9M WOOD**  
**Surface Type:Verge**  
 Coordinates:  
 X=481341.76  
 Y=153521.90  
 Footpath width:m  
 Verge width: 5.0+m

Any modifications to the drawing or use of alternative items to those specified must be agreed with Toob's local planning department

Reproduction from the Ordnance Survey map by Toob with permission of Ordnance Survey on behalf of Her Majesty's Stationary Office © Crown Copyright Toob

FL3X2-SDP-A-03-09

Originator	Cyient
Contact Number	0752598439
Issue Date	October 17, 2023
Office	Southampton
Line Manager	Di Godsave



Internal Use Only