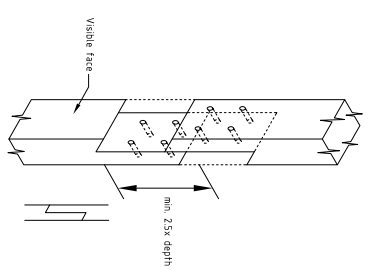


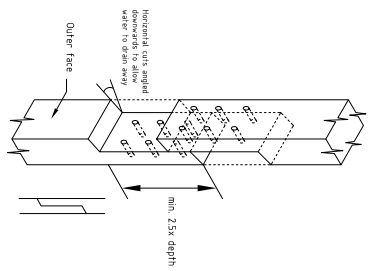
NOTES

1. THESE ARE PLANNING DRAWING & SHOULD ONLY BE USED FOR THAT PURPOSE
2. THESE ARE NOT CONSTRUCTION DRAWINGS

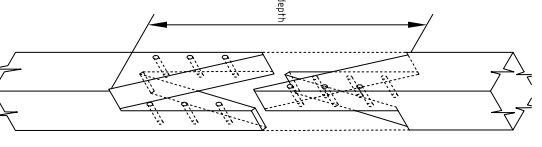
Not to Scale



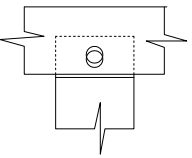
Halved Undercut Scarf Joint -
For internal studs and posts only.



Halved Scarf Joint -
For external studs and posts.

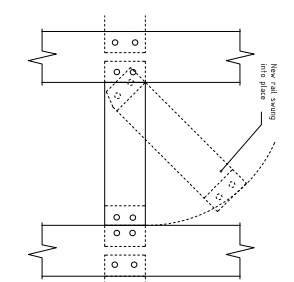


Scissor Joint -
For timber joints Timber, and major posts, should be done on bench.

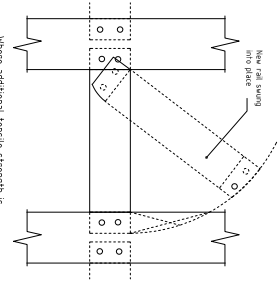


Concealed Hollow Area

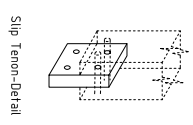
All patches must be drilled offset to joint. Pigs to be external and tapered. Scarf formed 25mm over future 50mm by 25mm minimum.



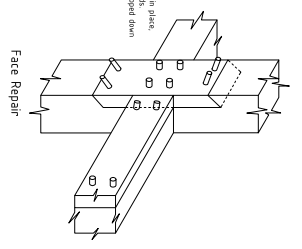
Repair of Mid Rail



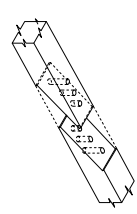
Face-applied Scarf -
for rafters



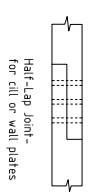
Slip Tenon - Detail



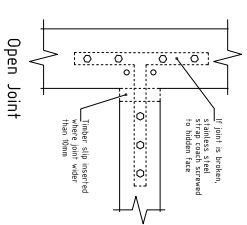
Face Repair



Stopped Splayed Scarf

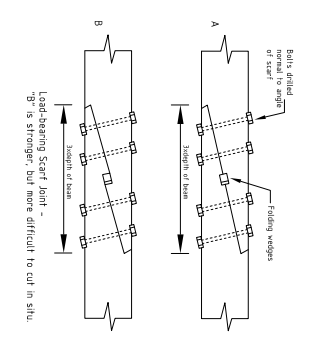


Half-Lap Joint -
for sill or wall plates

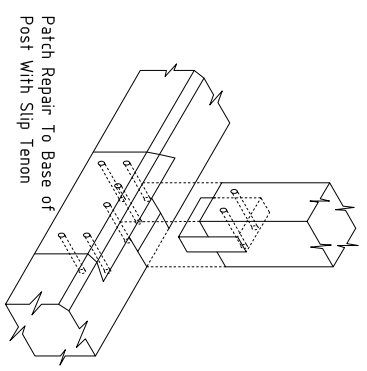


Open Joint

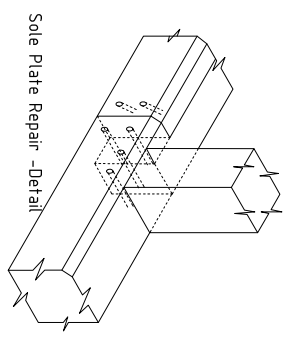
Where additional tensile strength is required, cut slot in post to allow tenon of new rail to be scarfed into place. Slot positioned by shaped oak slip fixed in place.



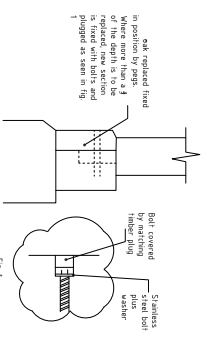
Top Plate repair around post (diagramatic)



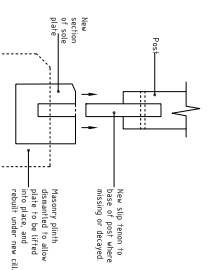
Patch Repair To Base of Post With Slip Tenon



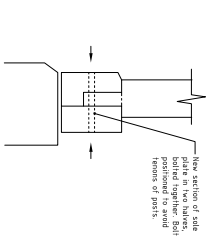
Sole Plate Repair - Detail



Face of Sole Plate replaced



Replacement of Sole Plate



Replacement of Sole Plate Without Disturbing Plinth

THE FRAME IS THOUGHT TO BE IN NEED OF REPAIRS, ANY LOCALISED TIMBER REPAIRS ARE TO CARRY OUT USING THE CONSERVATION SPLICE TECHNIQUES SHOWN ON THIS DRAWING.

PROPOSED TIMBER FRAME REPAIRS

for JOLLYBOYS BAKERS LANE FELSTED DUNMOW CM6 3LP

© The copyright of this drawing belongs to Kay Pilsbury Thomas

NO. 2331 / PD / 253

SCALE A4 - N/S

DATE OCT '23

REV

CHECKED

DRAWN MC

AY PILSBURY THOMAS ARCHITECTS

TEL: 01799 599208 FAX: 01799 599965

www.kpt.co.uk info@kpt.co.uk

HONEYLANDS, RADWINNER, SAFFRON WALDEN, ESSEX, CB10 2TJ