

**Legend**

Borehole		Control Station	
Gate		Marker	
Tree		Stump	
Trial Pit			
Bottom of bank			
Building outline			
Bushes			
Channel line			
Fences			
Hedge			
Overhead Wires - Electricity			
Overhead wires - Telephone			
Path			
Road centreline			
Top of bank			
Top of kerb			
Tree canopy			
Wall			
Foul Sewer			
Surface Water Sewer			

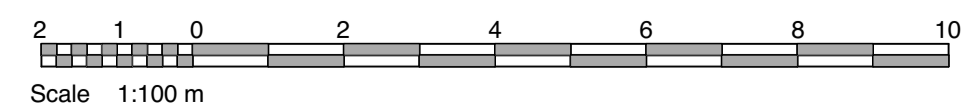
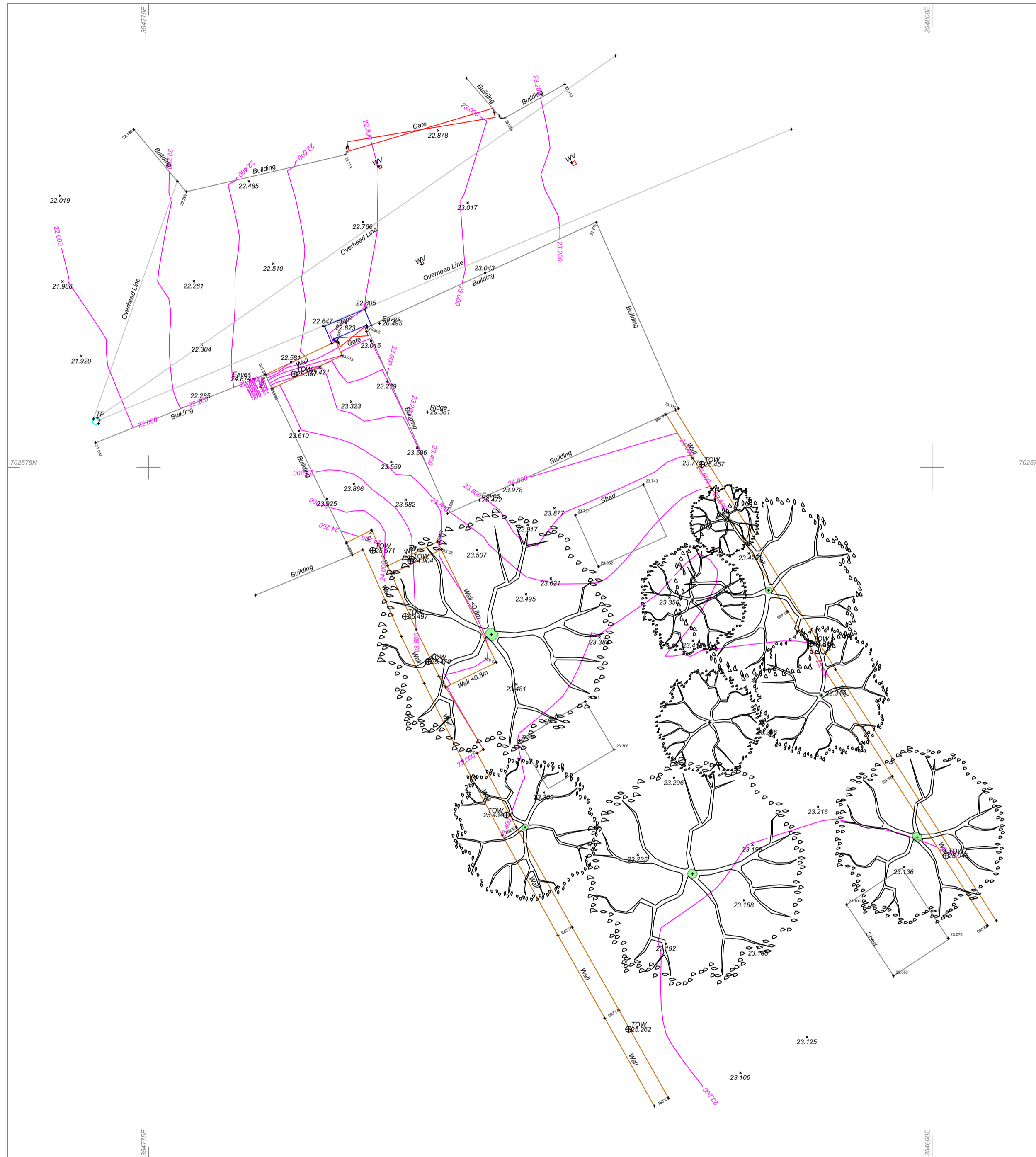
**Abbreviations**

AV = Air Valve	PEG = Marker Peg
BT = British Telecom	RE = Riding Eye
EA = Eaves Level	RS = Road Sign
EP = Electricity Pole	SC = Stopcock
FPL = Finished Floor Level	SV = Stop Valve
FP = Flag Pole	TL = Traffic Light
G = Gully	TOW = Top of Wall
GV = Gas Valve	TRP = Trial Pit
HW = Hydrant	TP = Telegraph Pole
IL = Invert Level	TV = Television
LP = Lamp Post	WM = Water Meter
MT = Manhole	WV = Water Valve

Control Stations			
Station No.	Description	Easting (m)	Northing (m)
STN			

**Notes**

- Contours at vertical features are indicative.
- Levels for road are taken along channel line.
- Isolated mature trees are denoted by trunk and average outer canopy.
- Every effort has been made to locate all service covers but it should be noted that ground cover or local obstructions may hinder the ability to locate covers.
- All control station coordinates should be checked and verified prior to use.
- All data remains property of Benchmark Land Surveys Ltd until payment has been made in full.
- All levels to OS Datum (OSGM15 Geoid) unless noted otherwise.
- North relates to OS Grid North unless noted otherwise.
- All coordinates relate to OSGB36 (OSTN15)



Revision	Description	Date

# Benchmark Land Surveys

21 Pittempton Road  
 Dundee DD3 9SZ  
 T: 07427 622650  
 E: info@benchmarklandsurveys.com  
 www.benchmarklandsurveys.com

Project  
 land to rear of 35-37 High Street - Pittenweem

Title  
 Topographic Survey - 2d

Drawn by	Checked	File
MN	MN	A1
Drawing Number	Revision	Scale
1019/1		1:100
		Date
		28/11/23