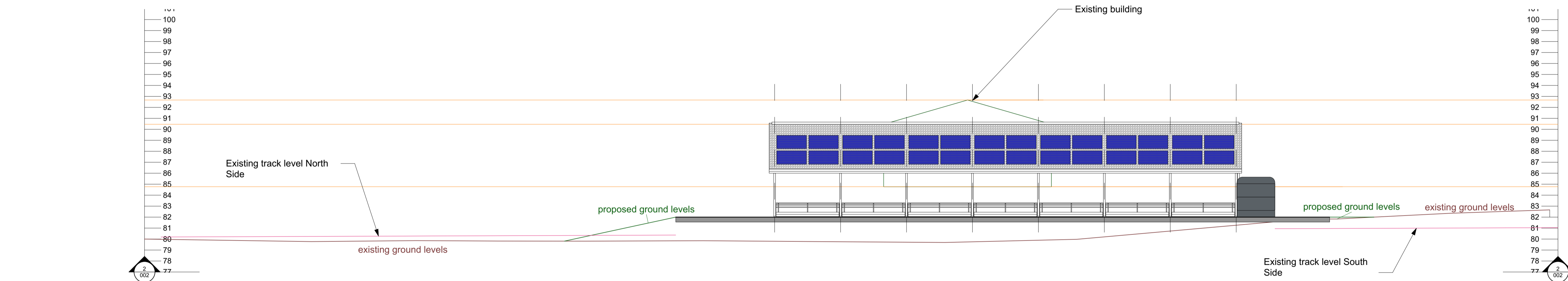


1 North-South Cross Section  
Scale: 1:200



2 West-East Cross Section  
Scale: 1:200

Materials Legend

- A Fibre cement roof cladding
- B Traditional Yorkshire boarding
- C 1000mm high concrete panel
- D Portal frame
- E Galvanised rainwater goods
- F Galebreaker to gate height
- G Solid clad gates
- H Livestock feed fence gates
- I Rainwater Harvesting
- J Open protected ridge vent
- K Solar panels

general notes

All setting out must be checked on site prior to commencement.  
 All levels must be checked on site and refer to ordnance datum newlyn.  
 All fixings and weathers must be checked on site.  
 All dimensions must be checked on site prior to manufacturer.  
 This drawing must not be scaled.  
 This drawing must be read in conjunction with the relevant specification clauses.  
 This drawing must not be used for land transfer purposes.  
 Revision Status: P=Preliminary T=Tender C=Construction  
 © 2022 Bart Agri Ltd.

revision	date	amendments
A	09/06/2023	First draft
B	15/01/2024	Added Cross Sections, Annotations & RW Detail

client	location
Alistair Pinkerton	Blackbirds Farm
project	
Suckler unit	

sheet	drawing number
2 of 2	BA0067
BF-AP-002	

