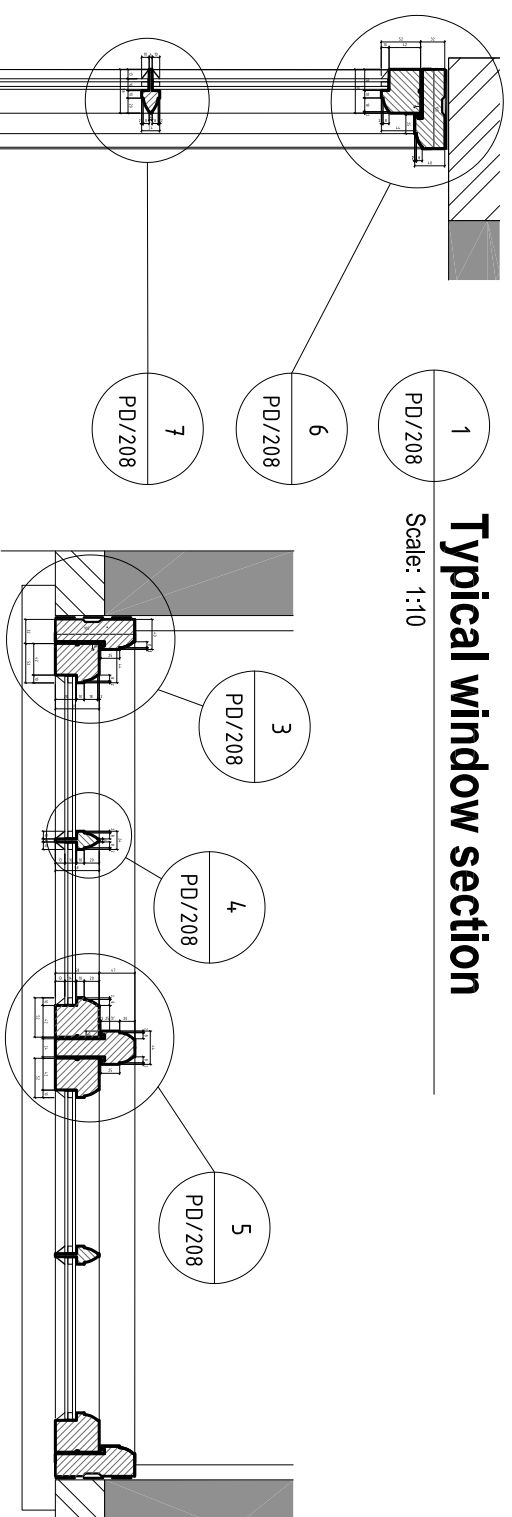


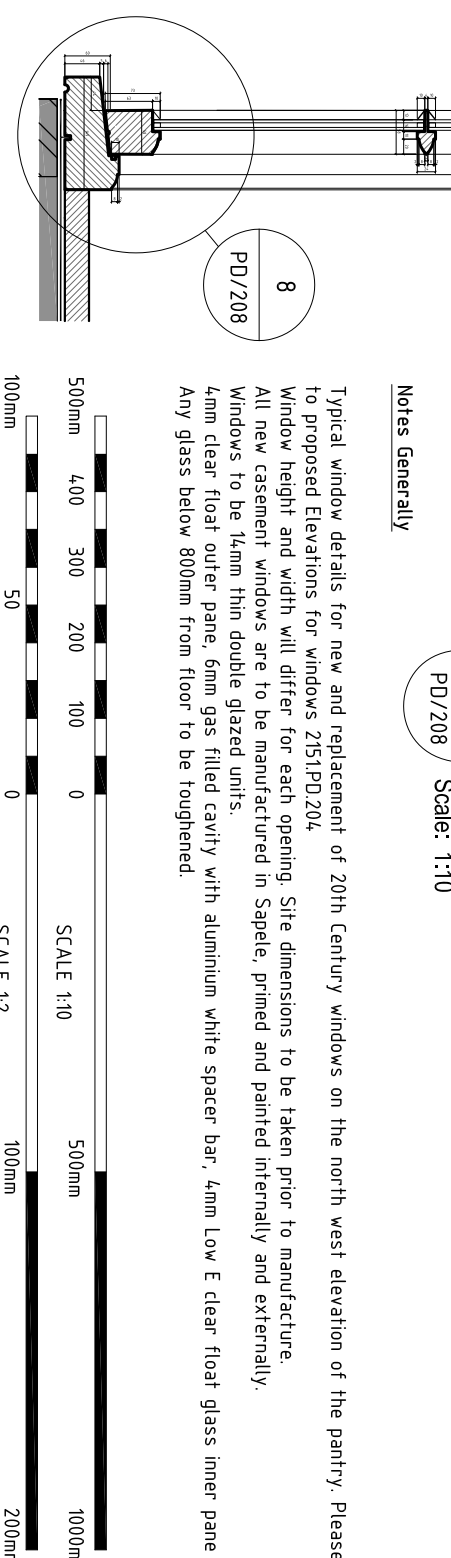
## Typical window section

1 PD/208  
Scale: 1:10



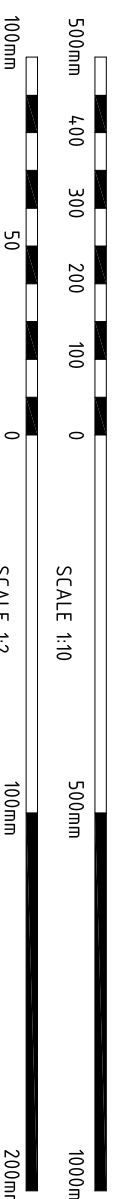
## Typical window Plan

2 PD/208  
Scale: 1:10

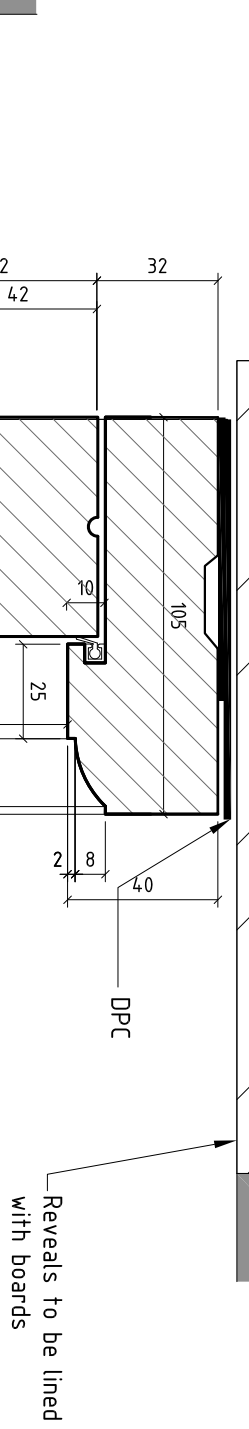


### Notes Generally

Typical window details for new and replacement of 20th Century windows on the north west elevation of the pantry. Please refer to proposed Elevations for windows 2151, PD/204  
Window height and width will differ for each opening. Site dimensions to be taken prior to manufacture.  
All new casement windows are to be manufactured in Sapele, primed and painted internally and externally.  
Windows to be 14mm thin double glazed units.  
4mm clear float outer pane, 6mm gas filled cavity with aluminium white spacer bar, 4mm Low E clear float glass inner pane  
Any glass below 800mm from floor to be toughened.



Existing brick and rendered solid wall



## Head detail,

6 PD/208  
Scale: 1:2

24 x 58mm Sapele glazing bar, moulded and twice rebated to accept double glazed units.

Reveals to be lined with boards

## Glazing Bar Detail

7 PD/208  
Scale: 1:2

73 x 58mm Sapele bottom rail, moulded and rebated to accept double glazed unit.

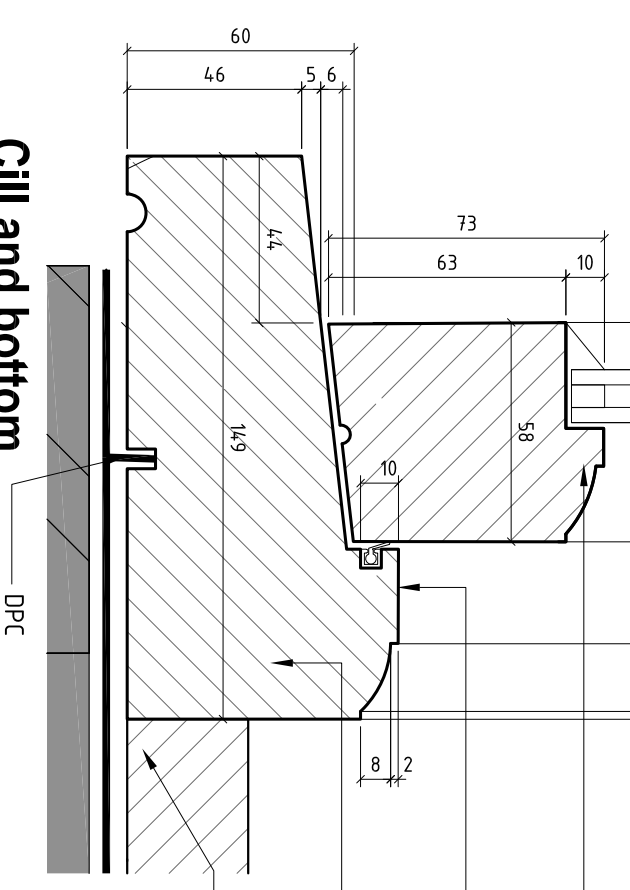
Joiner to ensure this section is deep enough for window stay plate

72x 149mm Sapele cill, moulded and rebated to accept casement and cill board.

New 25mm thick softwood cill board with bull nose edge and applied 19 x 19mm scotia moulding to the underside  
Cill board size will vary to suit each window opening and wall depth

## Cill and bottom rail detail,

8 PD/208  
Scale: 1:2



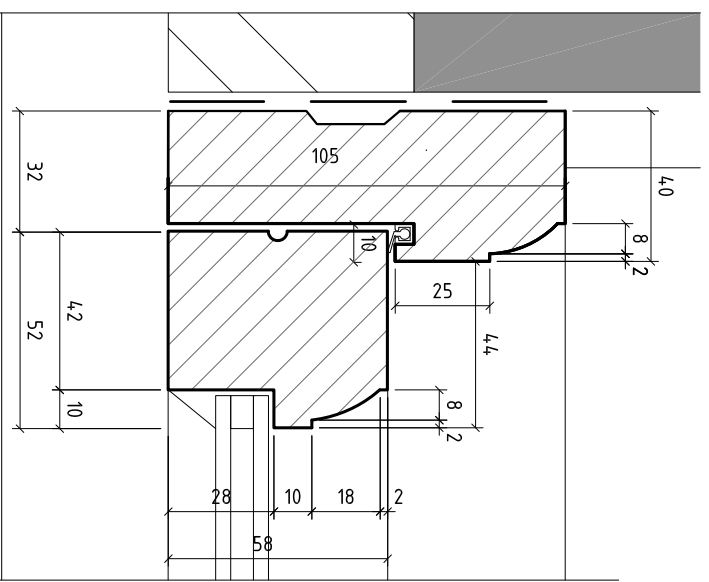
DPC

- NOTES
1. THIS IS A PLANNING DRAWING NOT TO BE USED FOR CONSTRUCTION
  2. ANY DISCREPANCIES TO BE BROUGHT TO THE ATTENTION OF THE ARCHITECT

Typical Casement Window Detail for Pantry as Proposed  
for  
ONEHOUSE HALL  
LOWER ROAD  
ONEHOUSE  
STOWENMARKET  
IP14 3BY  
© The copyright of this drawing belongs to Kay Pilsbury Thomas

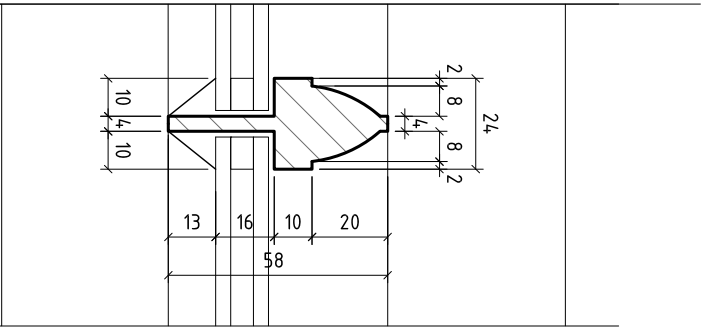
## Jamb detail

3 PD/208  
Scale: 1:2



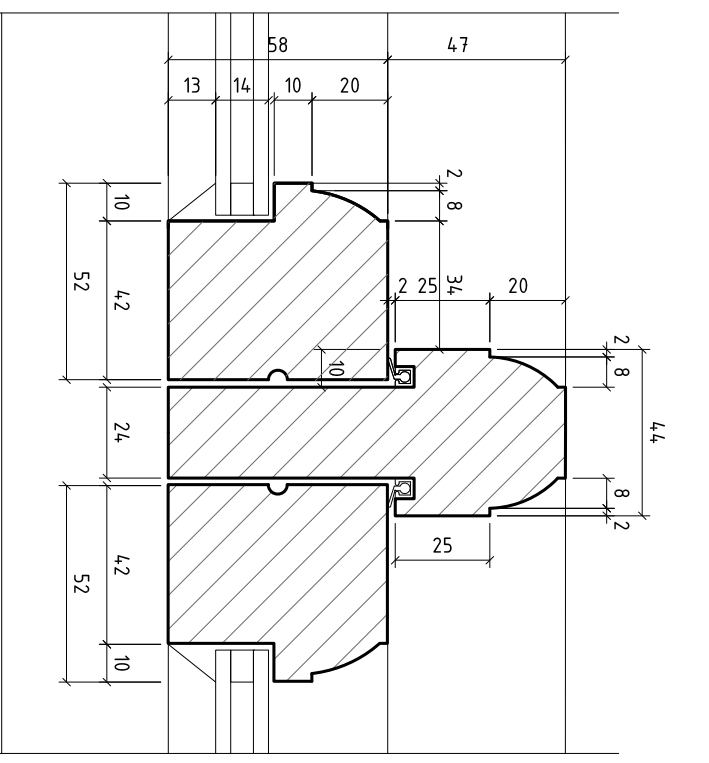
## Glazing bar detail

4 PD/208  
Scale: 1:2



## Mullion detail

5 PD/208  
Scale: 1:2



REV	BRIEF DETAILS	DATE

NO	2151 / PD / 208	CHECKED	ST
SCALE	1 : 10 @ A3	DATE	NOV '22
NO		REV	KB

AY PILSBURY THOMAS ARCHITECTS  
TEL: 01799 599208 FAX: 01799 599965  
WWW.KPT.CO.UK INFO@KPT.CO.UK  
HONEYLANDS, RADWINTER, SAFFRON WALDEN, ESSEX, CB10 2TJ