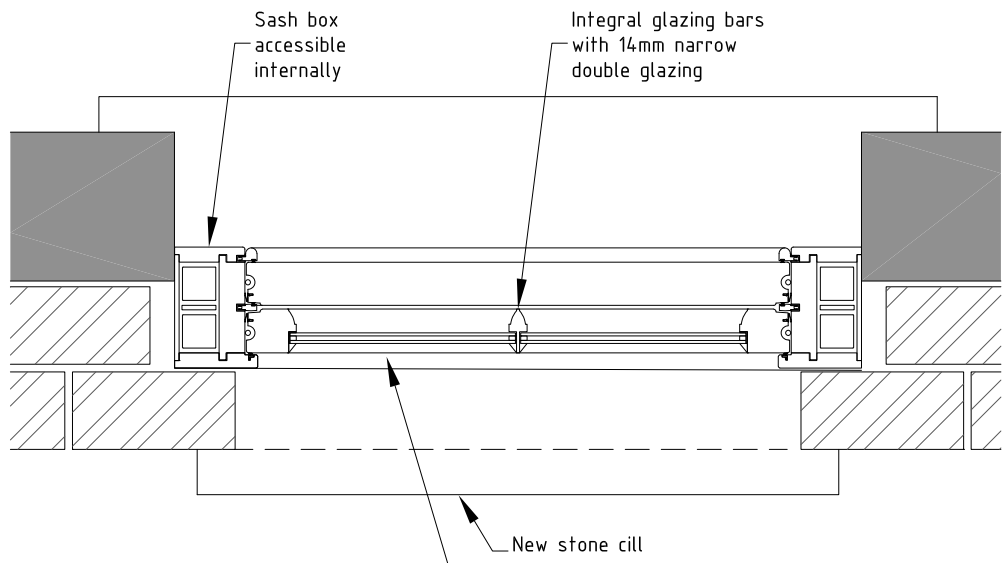
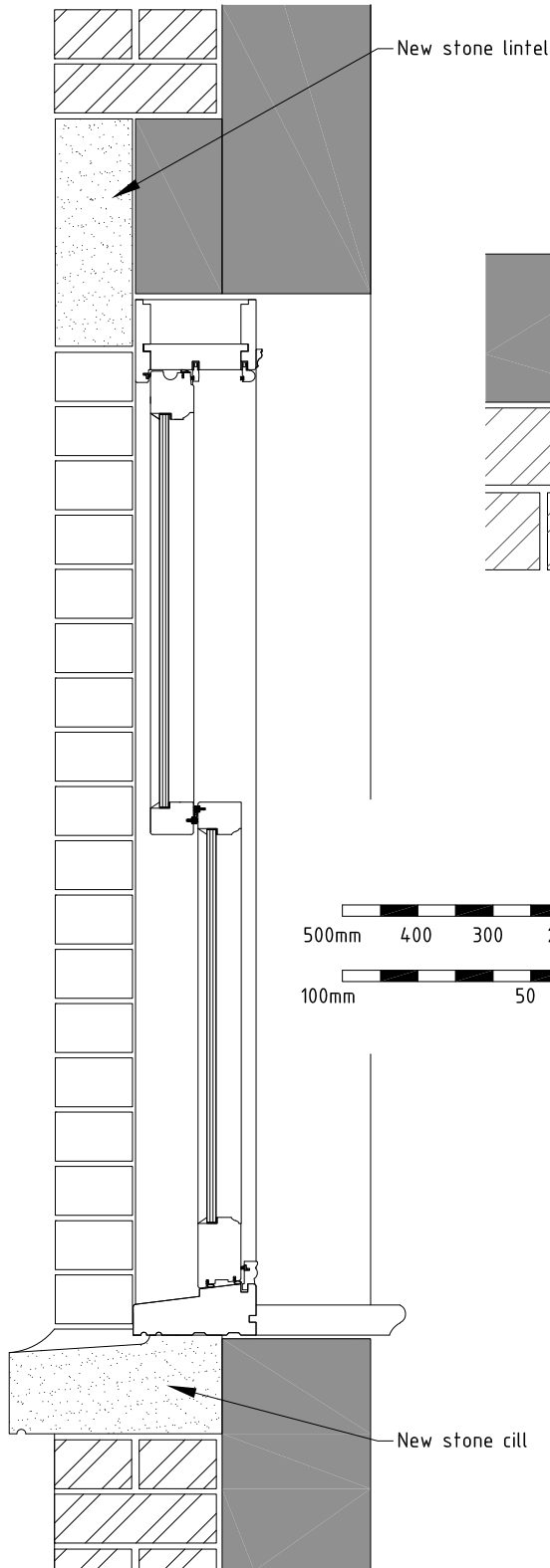
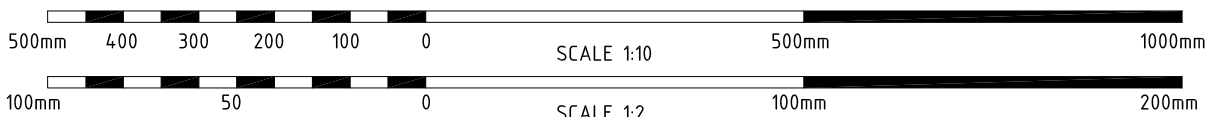


NOTES

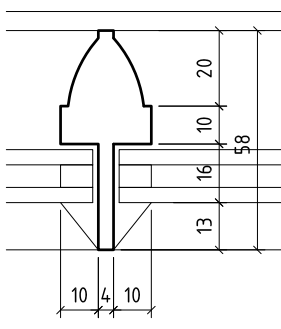
1. ALL DIMENSIONS TO BE CHECKED ON-SITE.
2. ANY DISCREPANCIES TO BE BROUGHT TO THE ATTENTION OF THE ARCHITECT.



1:10 Sash Window Typical Plan



1:10 Sash Window Typical Section



1:2 Typical Glazing Bead

Notes Generally

Reinstated Dormer proposals

The new sash windows shall have sliding sash windows with 4 panes, 2 over 2. Lambs tongue detail to glazed beads to match the existing original sash windows throughout the house and integral glazing bars with narrow double glazing. Limestone cill and lintels to be Caen limestone or similar and approved.

There are 7no. sashes in total and, 2 on the south east elevation. The existing casement and new casement window to the pantry shall share the same glazing beads with the frame details shown on drawing 2151/PD/208.

Typical Sash Window Detail for Extension as Proposed

for

ONEHOUSE HALL
LOWER ROAD
ONEHOUSE
STOWEMARKET
IP14 3BY

© The copyright of this drawing belongs to Kay Pilsbury Thomas

REV	BRIEF DETAILS	DATE

NO.	2151 / PD / 206	REV	CHECKED
SCALE	1 : 10 @ A4	DATE	NOV '22
		DRAWN	KB

KAY PILSBURY THOMAS ARCHITECTS

TEL 01799 599208 FAX: 01799 599965
www.kpt.co.uk info@kpt.co.uk
HONEYLANDS, RADWINTER, SAFFRON WALDEN, ESSEX, CB10 2TJ