

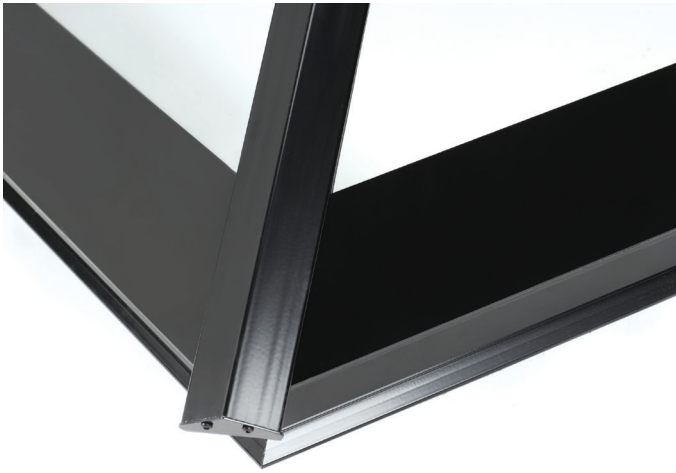
# ROOF MAKER

WORLD CLASS ROOFLIGHTS



## PRODUCT SPECIFICATION GUIDE SLIMLINE® ROOF LANTERN

## FEATURES



- Ultra slim aluminium frame, maximising the light entering the room below
- Manual and electronic double glazed roof vents available for exceptional ventilation
- Double and triple glazed options available, achieving Ug-values

as low as 0.8w/m<sup>2</sup>K

- Bespoke items made to order and delivered within 7-10 working days
- Manufactured to 'internal dimensions' or 'visible glass size'
- Available flat packed, fully assembled or we can install
- Minimum sizing 400mm x 400mm, up to a maximum 4000mm x 2000mm / 6000mm x 1600mm and beyond
- Choice of glass specifications and tints to suit your requirements and budget
- Pitched at 40 degrees for maximum structural integrity and to promote self-cleaning
- Marine grade powder coated frames, to withstand the harshest weather conditions
- Easy clean glass on all products as standard, keeping the glass cleaner for longer and reducing the manual cleaning effort
- Decorative ceramic border which protects the glass seals from UV damage
- 20-year unit seal warranty and 10 years on aluminium and powder coating\*

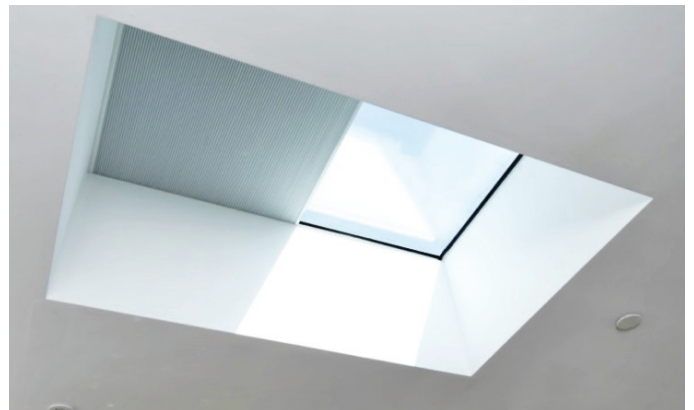
\* Full warranty information available on [www.roof-maker.co.uk](http://www.roof-maker.co.uk)

## BLACKOUT BLINDS AVAILABLE

Electric blackout blinds allow you greater control over the light coming into your room. Operate using the remote control, achieving a partial or total blackout as desired.

Powered by the mains adaptor, the blinds are available in black or white pleated material with co-ordinating motors and internal trims. The electric motors come with a 1-year guarantee.

They can be made in sizes up to 3000mm x 2000mm and are fitted to the rooflight during the manufacturing process, supported by spooling cords and semi-transparent nylon cords. The blinds are not are not sold separately.



## STANDARD FRAME COLOURS

Jet Black (RAL 9005)

## UPGRADED FRAME COLOURS

Anthracite Grey (RAL 7016)

White (RAL 9003)

Any of the 1,625 RAL colours

## STANDARD GLASS TINTS

Clear Glass

## UPGRADED GLASS TINTS

Subtle Blue Tint

Grey Tint

Satinova Privacy Glass

# GLASS OPTIONS

## DOUBLE GLAZED AND TRIPLE GLAZED



**ENERGY** is the name given to our standard glass. The glass offers outstanding Ug-values, which can be as low as 0.9 W/m<sup>2</sup>k, depending on your chosen product. Energy Performance is ideal if your property is north or east-facing, as it will maximise available light and heat during the morning.



**SOLAR PERFORMANCE**, with G-values as low as 38%, Solar Performance glass has all the great features of our standard glass, plus a solar reflective coating to repel heat from the sun. Like our standard glass, Solar Performance has low Ug-values to keep heat in. It also has low G-values to minimise solar gain. This means the glass will keep your room warmer in winter and cooler in summer.

## DOUBLE GLAZED ONLY



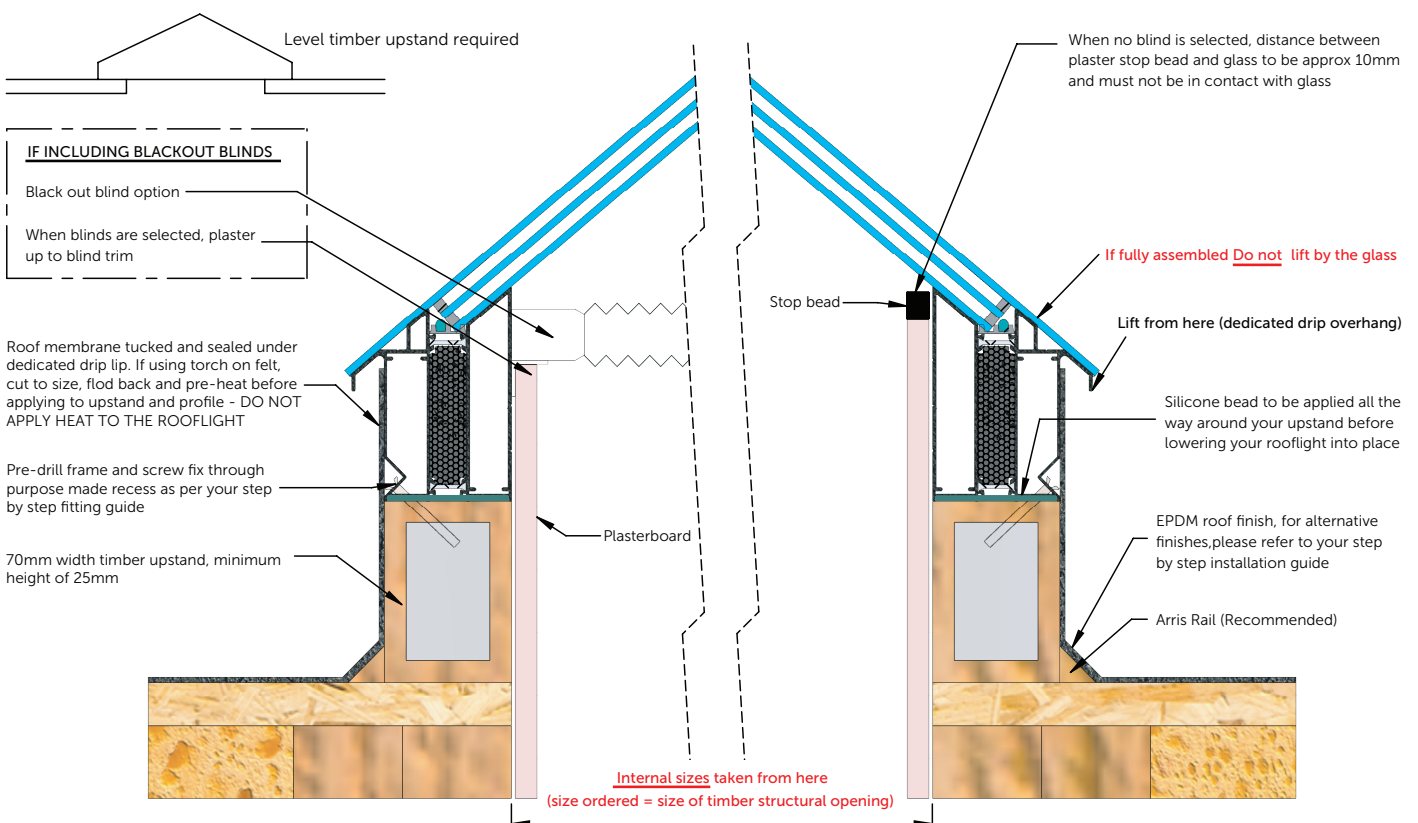
**ACOUSTIC PERFORMANCE** offers all the benefits of our standard glass, plus more effective insulation against outside noise caused by traffic and other factors. The improved noise reduction is achieved by using laminated panes, which are slightly thicker and spaced further apart.



**SECURE PERFORMANCE** uses our standard glazing composition with laminated glass. This makes it significantly more difficult for an intruder to break through. The toughened glass is primed with a plastic interlayer, which stops it from shattering and keeps it in one piece.

# FAST INSTALLATION

A 10 minute installation time is achievable with careful planning and suitable lifting equipment, when received fully assembled. The guide weight of a double glazed Slimline® lantern is approximately 42kgs/square metre. Triple glazed weight is approximately 60kgs/square metre. The rooflight will need to be 'weathered in' or 'flushed', which can be done with your chosen roof membrane or a separate flashing kit. This is not the responsibility of Roof Maker and will need to be completed by your builder or roofing contractor. Correct guidelines can be found in the installation guide at [roof-maker.co.uk/help/technical-document-hub](http://roof-maker.co.uk/help/technical-document-hub). Installing your rooflight according to the guidelines below will ensure it blends in seamlessly with your roof and internal finish.



## DELIVERY OF YOUR ROOFLIGHT

All deliveries can be made direct to site, anywhere in the UK. Using our own fleet of vans, our team of experienced drivers will call you an hour before they arrive.

Overseas delivery arrangements are available for non-UK Customers.



## PREMIUM CONSTRUCTION

British design, handcrafted premium construction with a market leading 20-year unit seal warranty.

All our units are handcrafted on site. We take pride in the quality and design of all our products. Our unit seals have a standard life expectancy of 30 years.

Continuous Acrylic Primary Adhesive seal:  
**ONLY ONE JOINTED CORNER**

Bostik P5125 hotmelt Secondary Super Vapour Seal



## EDGETECH WARM EDGE SUPER SPACER®

We use Super Spacer® in our entire product range to ensure your heat loss is kept to an absolute minimum.

80% of the energy lost through a window occurs at the edge of the glass because of the highly conductive nature of aluminium spacer. Super Spacer® is 950 times less conductive, blocking heat loss and reducing energy costs. Super Spacer reduces window Ug-values by up to 0.2W/m<sup>2</sup>k, allowing windows to achieve the highest window energy ratings.

## GLASS PERFORMANCE CHART

	Double Glazed Energy	Double Glazed Solar Control	Double Glazed Security	Double Glazed Acoustic	Triple Glazed Energy	Triple Glazed Solar Control
G-value (%)	73	45	72	72	63	38
U-value (Ug) (W/m <sup>2</sup> )	1.2	1.0	1.1	1.1	0.9	0.8
Acoustics reduction (Decibels)	-30	-30	-36	-38	-31	-31

Please note: The G-value performance of your rooflight can be further improved with the addition of a Solar Tint. Please enquire for details.

Contact our sales team, pop into our Leicester showroom or go online for a quote.

We also offer factory tours if you would like to see and experience our handcrafted manufacturing process directly.

# ROOF MAKER

WORLD CLASS ROOFLIGHTS

0116 269 6297 | [www.roof-maker.co.uk](http://www.roof-maker.co.uk) | [sales@roof-maker.co.uk](mailto:sales@roof-maker.co.uk)  
1 Pinfold Road, Thurmaston, Leicester LE4 8AS  
Monday to Friday 9.00am to 5.00pm