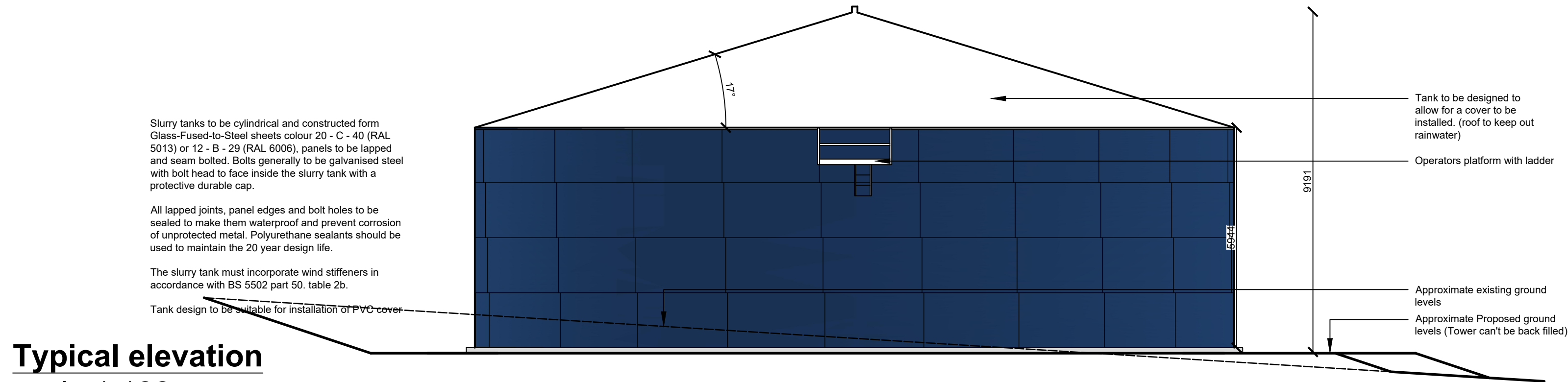
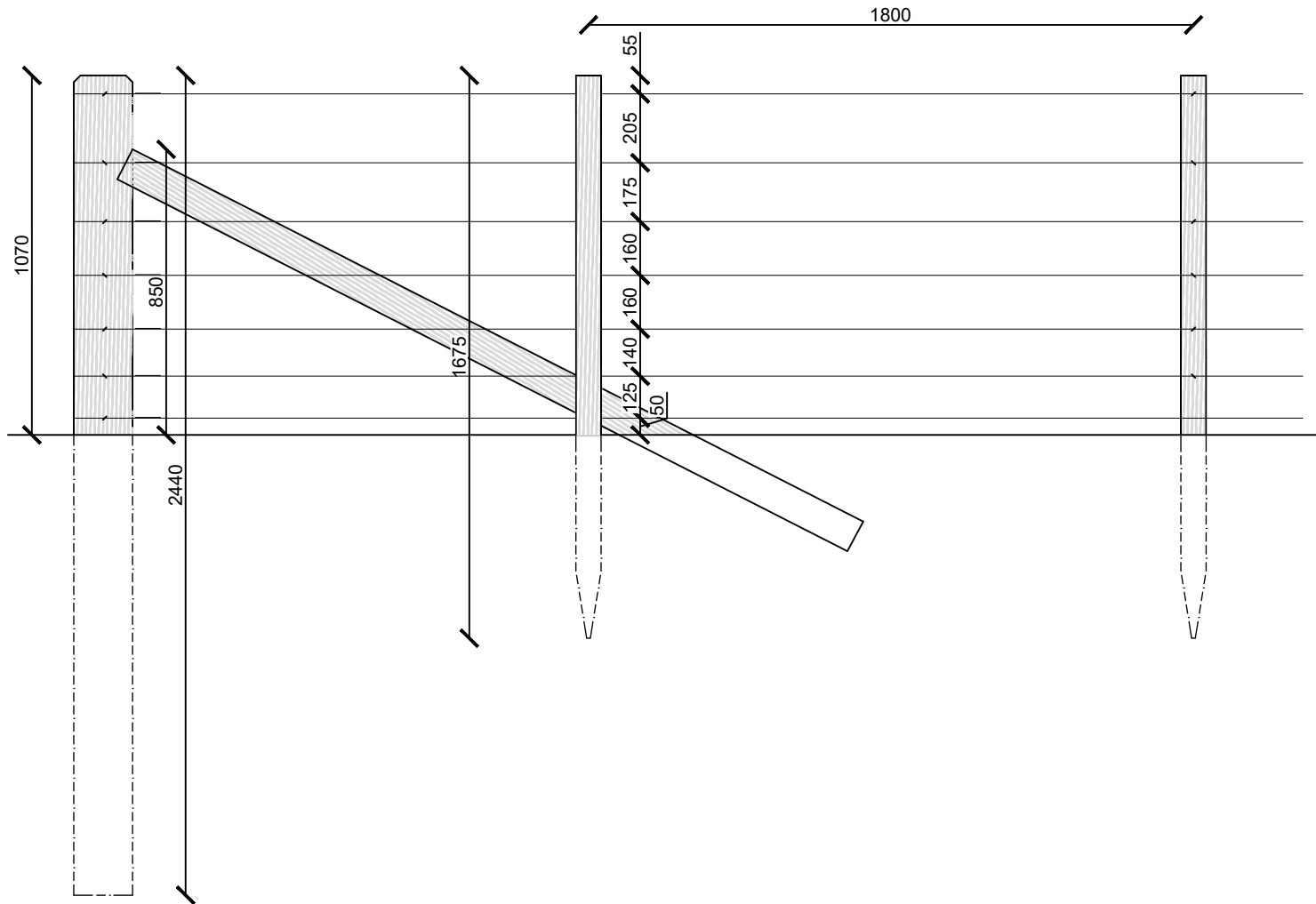




Typical operators platform

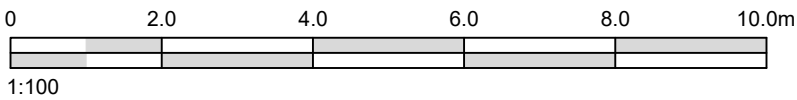


Typical elevation
scale 1:100



Proposed fence detail
scale 1:20

Construction and Installation Details
End strainers: 2440 x 175 x 175 sawn or 2440 x 175 diam. machine rounded. With round strainers, use jointing strands to fix the wires to help prevent the strainers rotating in the ground when the wires are tensioned. Struts should be used on all end strainers.
Intermediate strainers: 2440 x 150 x 150 sawn or 2440 x 150 diam. machine rounded at 100m intervals (maximum) and at changes in direction and slope. Struts will only be necessary at significant changes in direction or slope. When installing strainers, make the hole as narrow as possible and backfill with well rammed earth and stones. Strainers rarely need to be concreted, except where ground conditions prevent the strainer hole being dug to the full depth.
Struts: 2440 x 100 x 100 sawn or 2440 x 100 diam. machine rounded as required. Mortice into strainers. With square sawn end strainers, mortices should be offset to prevent rotation of the strainers when the wires are tensioned. With round strainers, mortice the strut into the mid-line of the strainer. Lean strainers back slightly against the pull of the fence. To minimise movement of the strainer when the wires are tensioned, nail a timber cross piece to the 'back' of the lower end and, during installation, place a large stone block on the 'front' side just below ground level. This can be further assisted by positioning a stone block tightly against the lower end of the strut.
Posts: pointed 1675 x 75 x 75 sawn or 1675 x 88 diam. machine rounded at 1800 centres. The first post away from a strutted end strainer or intermediate strainer should be located on the 'wrong' side of the fence to avoid the strut.
Wires: 7 no. 12 gauge high tensile. 10 gauge high tensile is also suitable. Fix wires to posts with 38mm (1.5") staples; angle staples to prevent splitting the post timber and do not hammer fully home so that the wires are free to move.



Notes

- ☐ SKETCH DWG
- ☒ PLANNING DWG
- ☐ BUILDING WARRANT DWG
- ☐ TENDER DWG
- ☐ AS BUILT DWG

Rev	Revision Description	By	Date

AGRI DESIGN

Buildings designed for agriculture
113 Mary Morrison Drive
Mauchline
Ayrshire, KA5 6AR
Tel: 01290 555776
Mobile: 07756 120748
E-mail: david@agri-design.co.uk
Website: www.agri-design.co.uk



Contract

SLURRY TOWER
W & G LAWSON
PARKLEE FARM
CARMUNNOCK
CLARKSTON

Drawing Title

ELEVATIONS & DETAILS

Drawing No.	Revision	Scale
202404-06		1:100 1:20
Drawn	Date	Paper Size
D.MAIR	MAR 2024	A2
		Plot Date
		13-MAR-24

All dimensions are in millimetres unless otherwise stated. All dimensions shall be checked on site prior to works commencing. Any discrepancies shall be reported to Agri Design. Do not scale this drawing. This drawing is the property of Agri Design and must not be reproduced without the written consent from Agri Design.