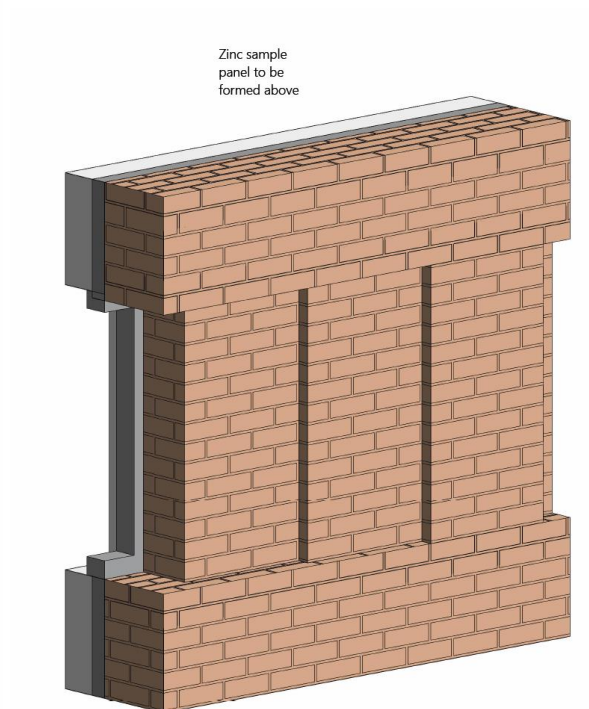
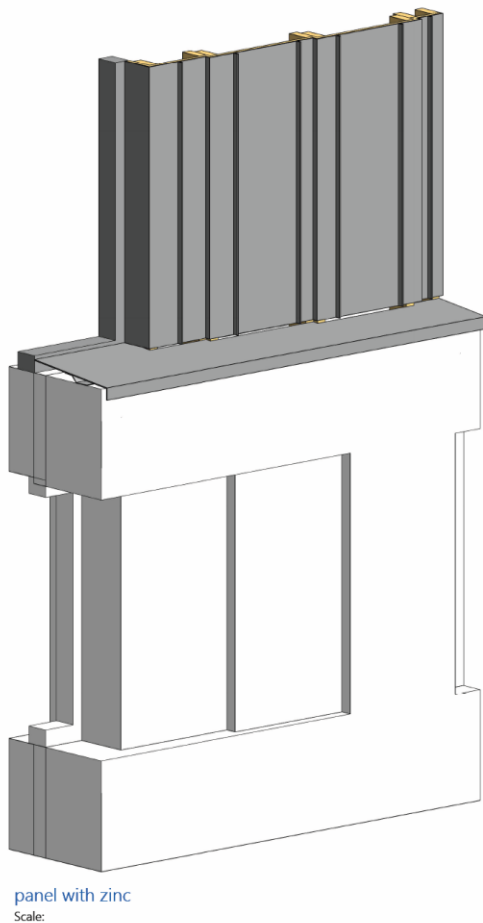




P21-039 – Banana Warehouse, Piccadilly, York
Planning approval 23/01088/FUL
Condition 5 Application for discharge

Construction mock ups of both a brick wall and zinc wall are now formed ready for inspection. These mock ups have been prepared through dialogue with the Design and Sustainability manager and largely follow the below images. Furthermore, samples of window frame and glazing are to be made available alongside the brick & zinc wall to show interactions.



The brick sample panel includes 2 variations of mortar colour and 2 variations of pointing. This follows discussions between Design and Sustainability manager and representatives for the applicant. Colours were selected as preferred options & pointing suggestions were indicated.

The sample panel is available for viewing and, upon receipt of this application, I would ask the Design and Sustainability manager to liaise with the agent to arrange a visit.