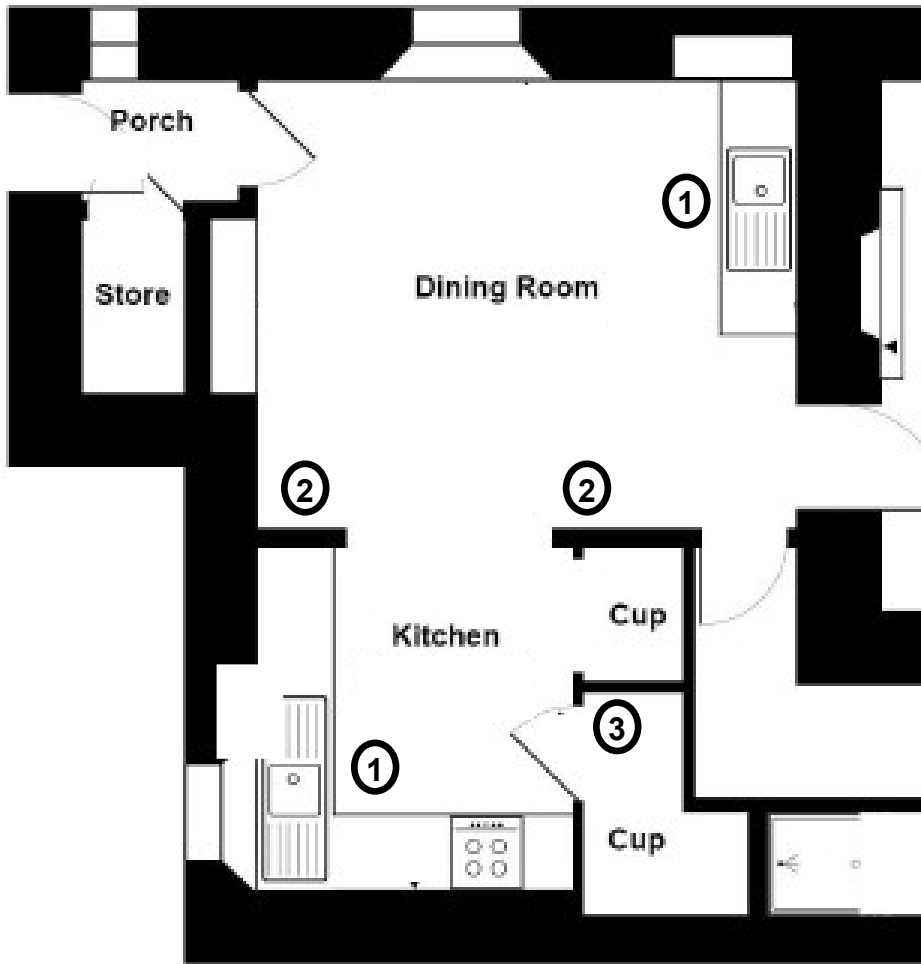
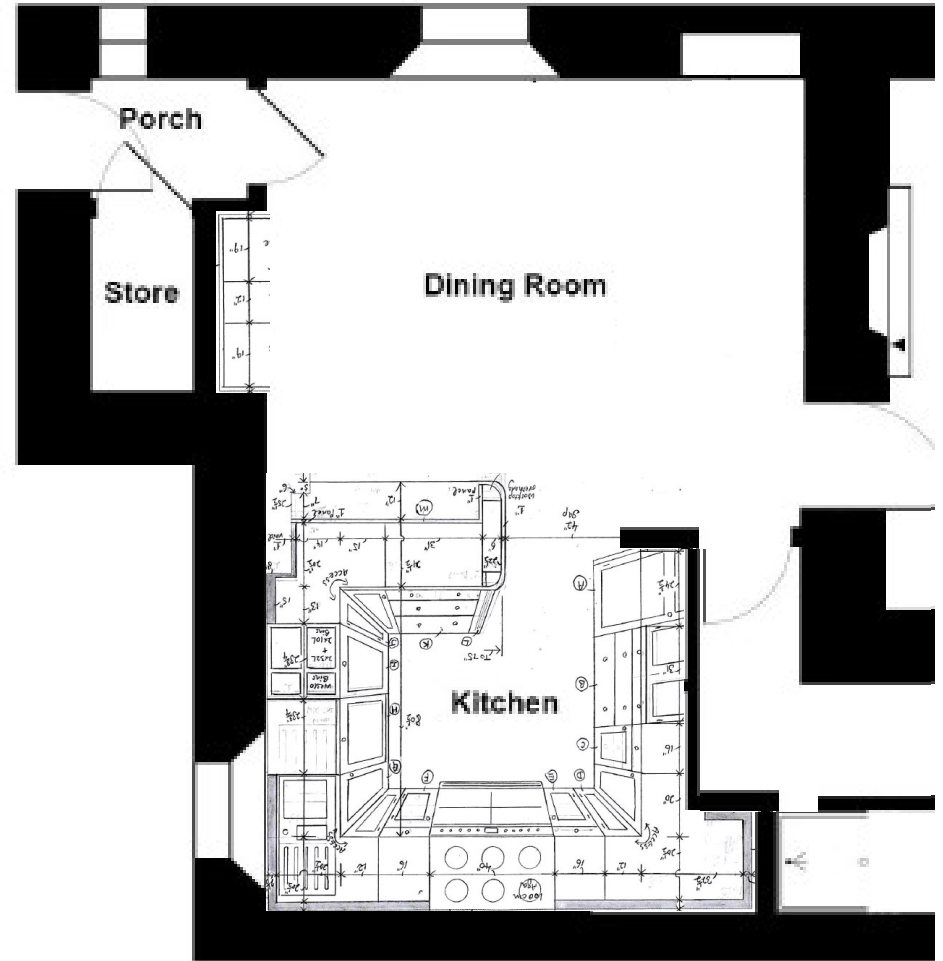


**Drawing 5 - Kitchen Plan**

1. Remove Existing Kitchen Units
2. Increase Opening Between Kitchen and Dining Room
3. Remove Pantries and Separating Walls



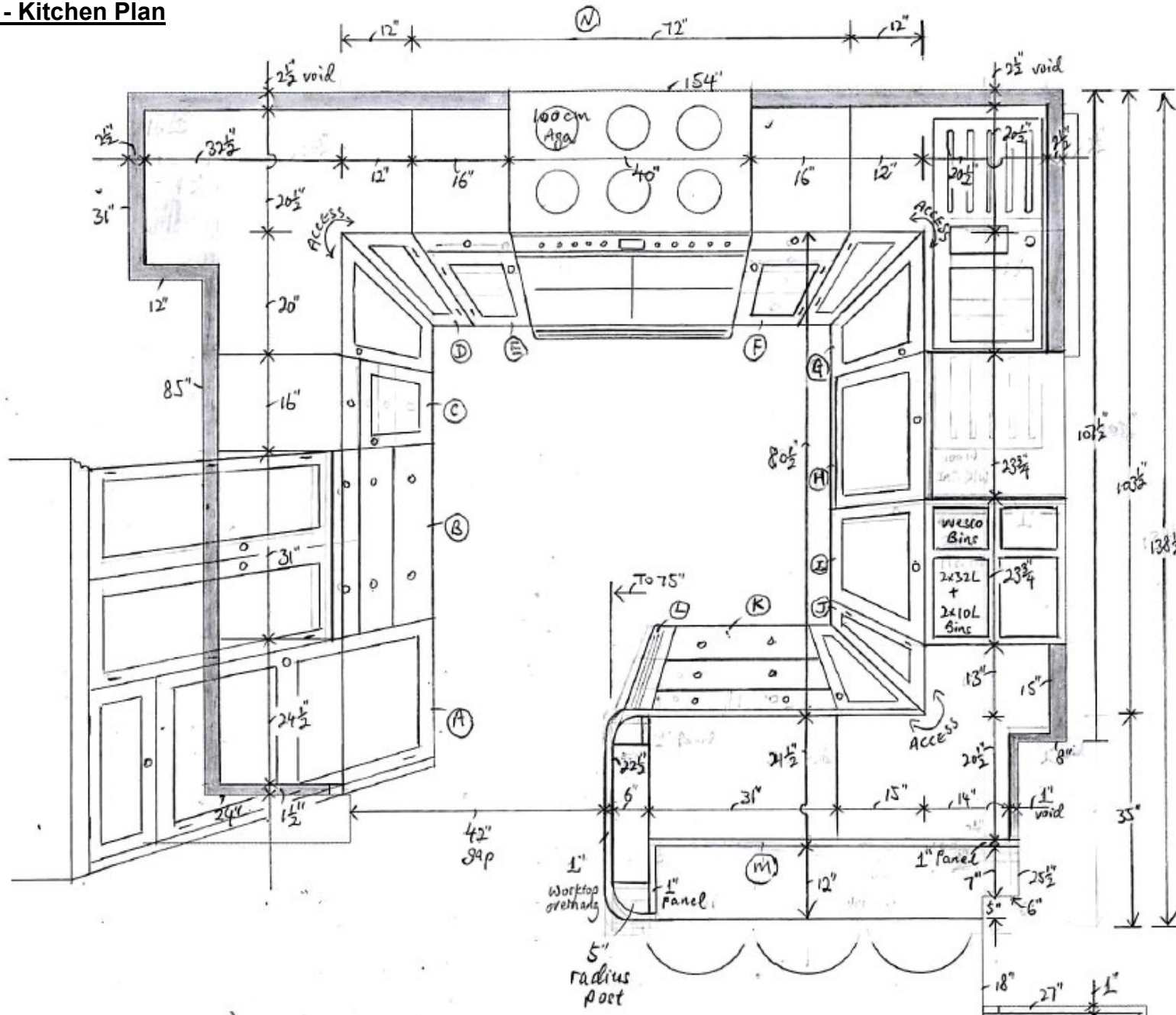
**Existing**



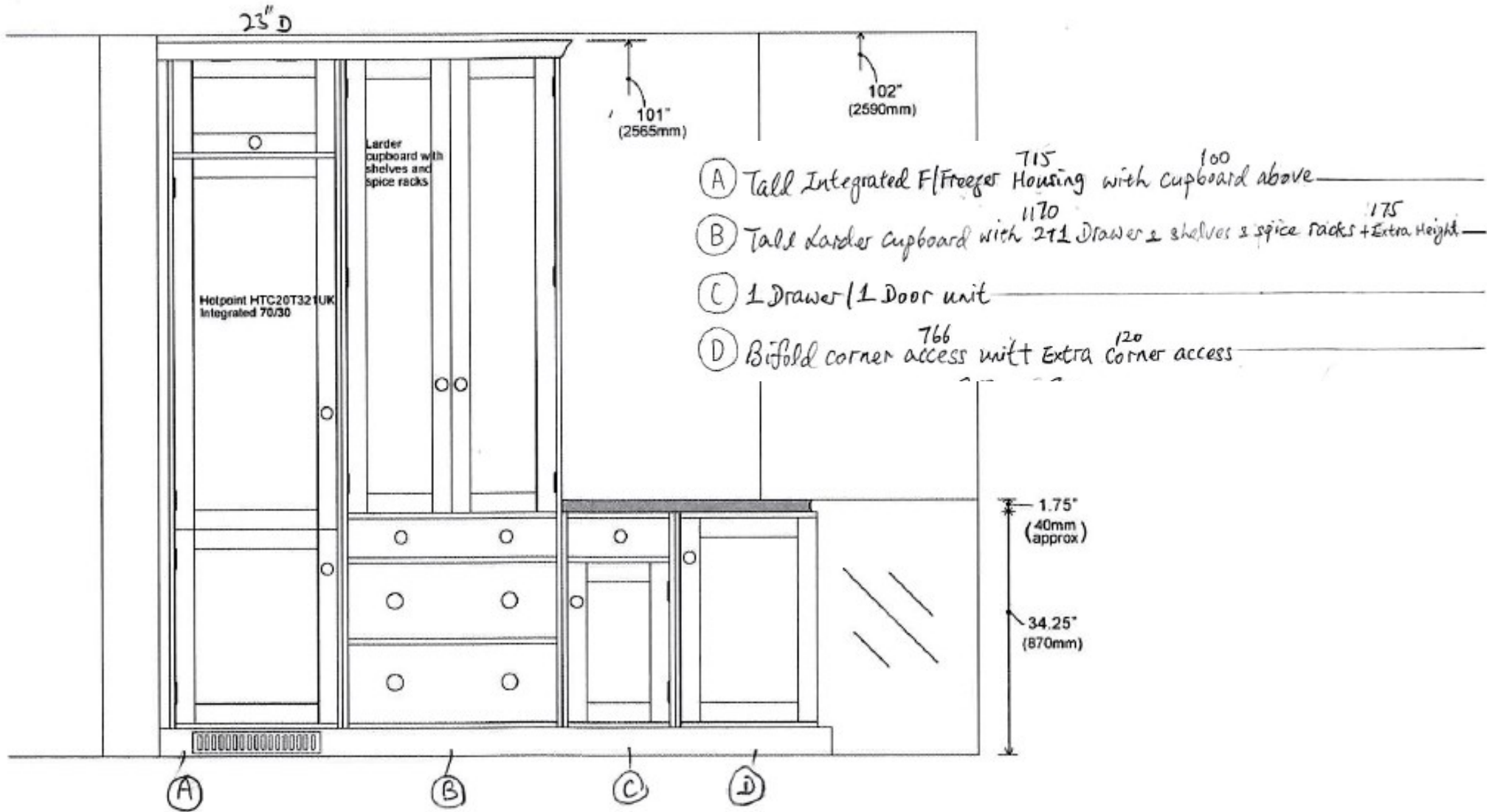
**Proposed**

*(see drawings 5 to 10 for new fitted kitchen layout)*

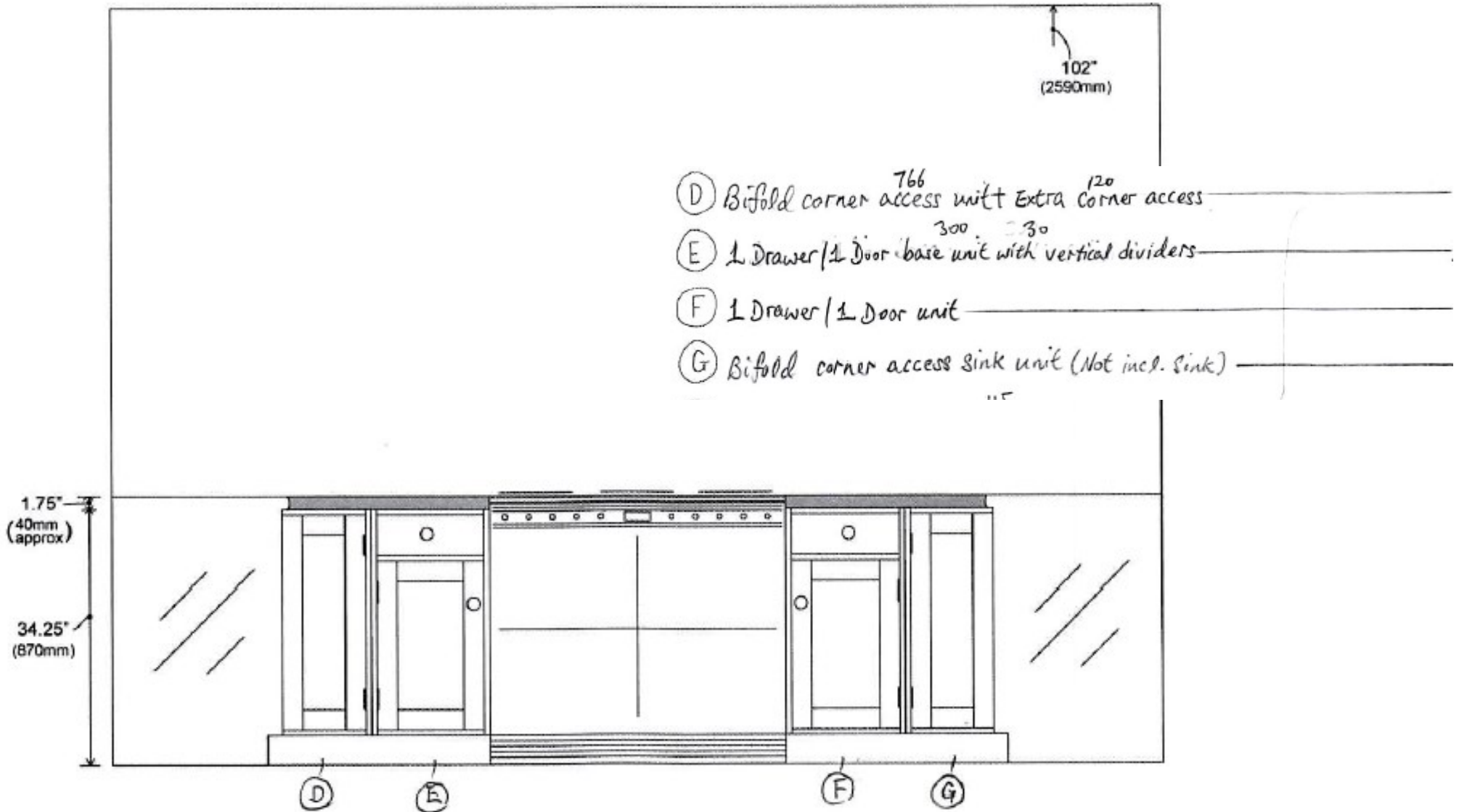
**Drawing 6 - Kitchen Plan**



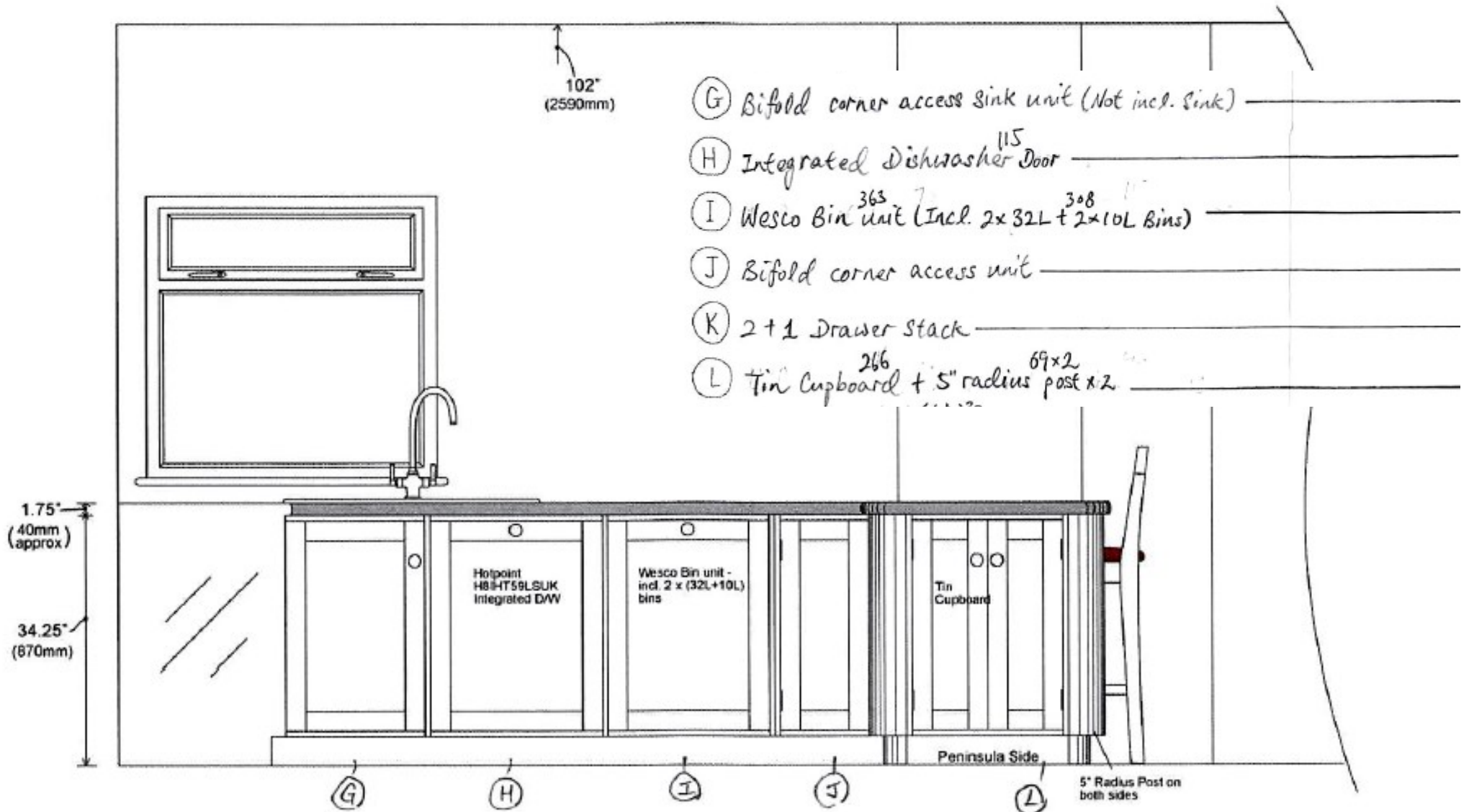
**Drawing 7 - Kitchen Elevations**



**Drawing 8 - Kitchen Elevations**

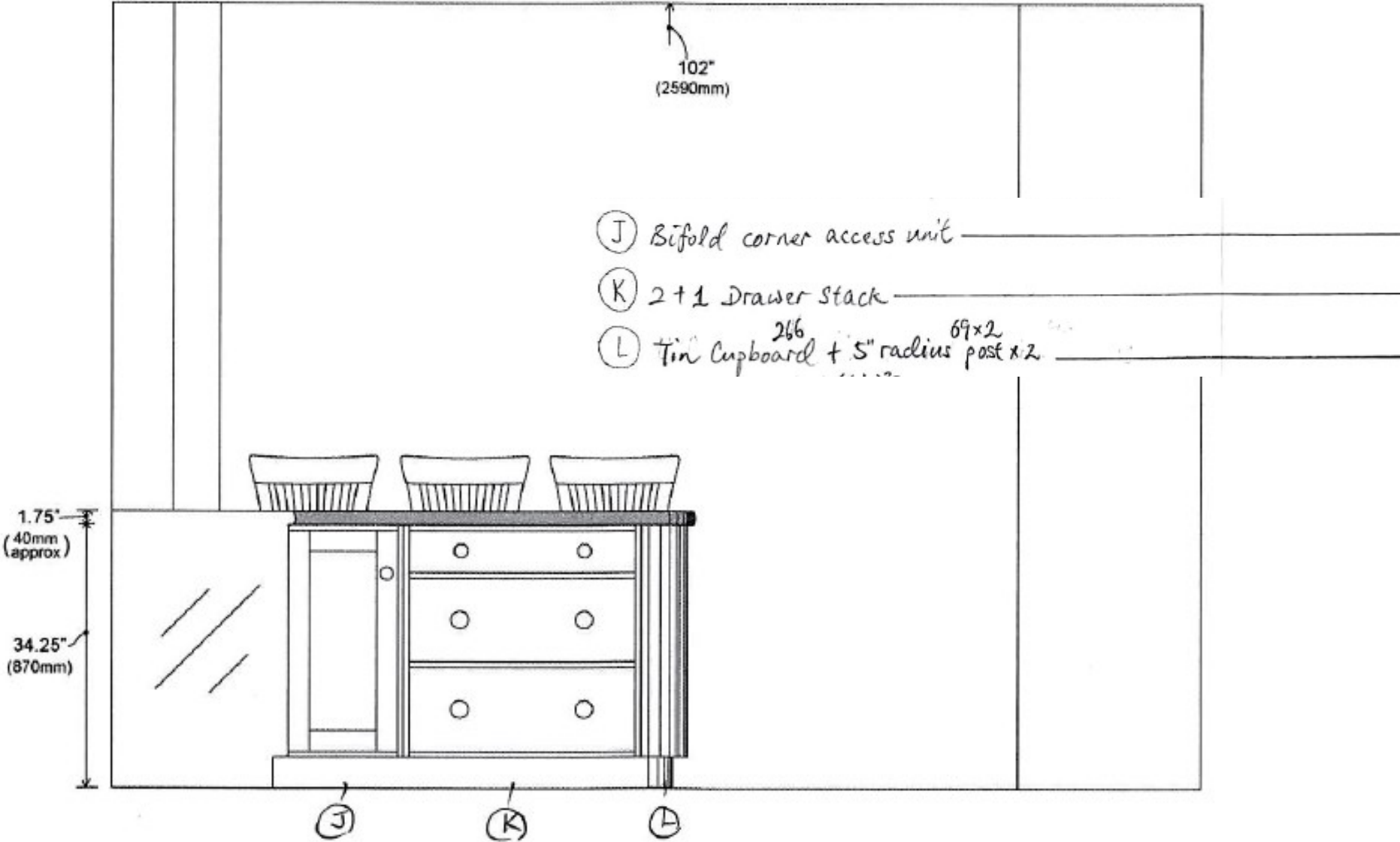


**Drawing 9 - Kitchen Elevations**



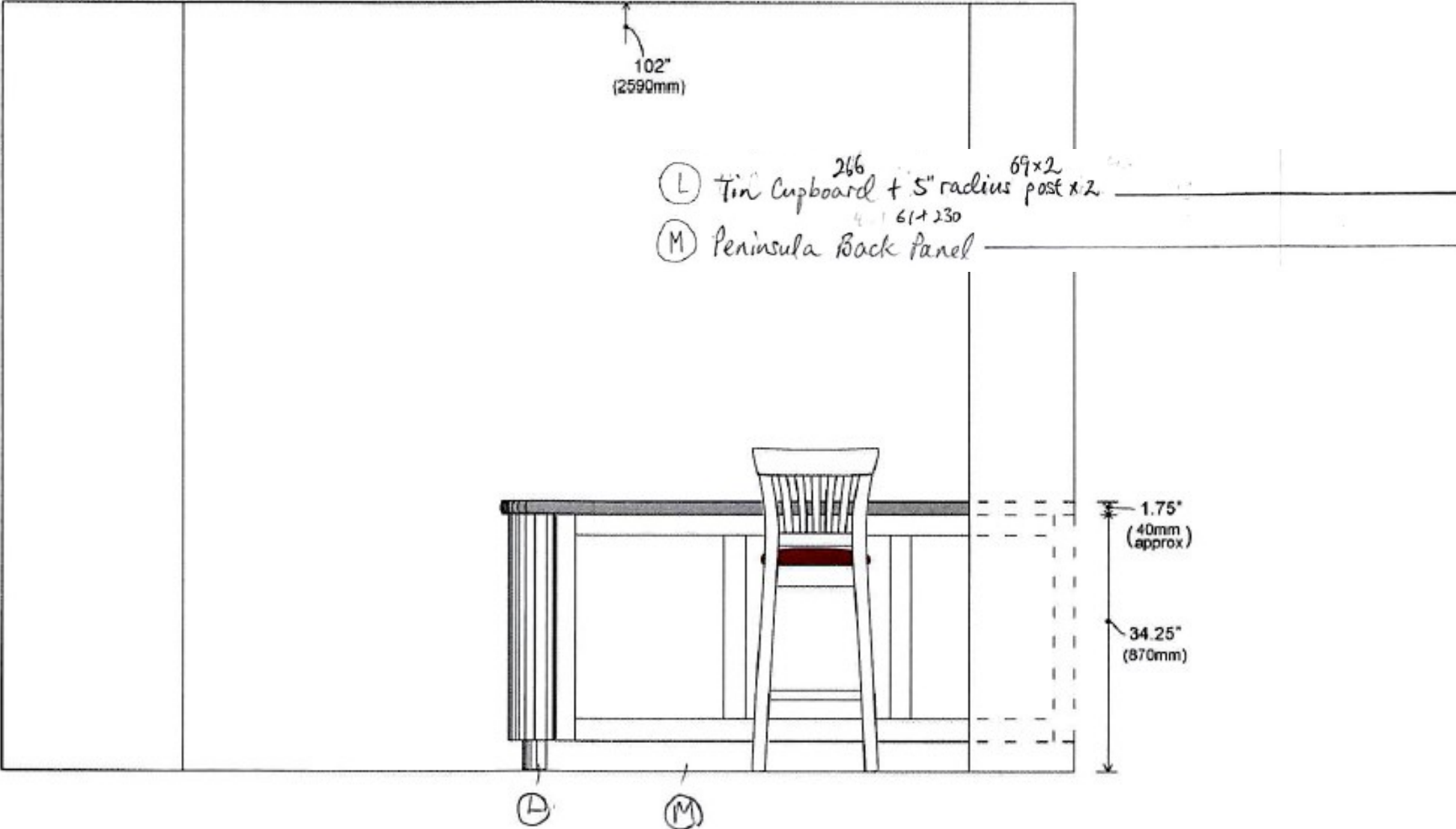
**Drawing 10 - Kitchen Elevations**

**Peninsula Front**

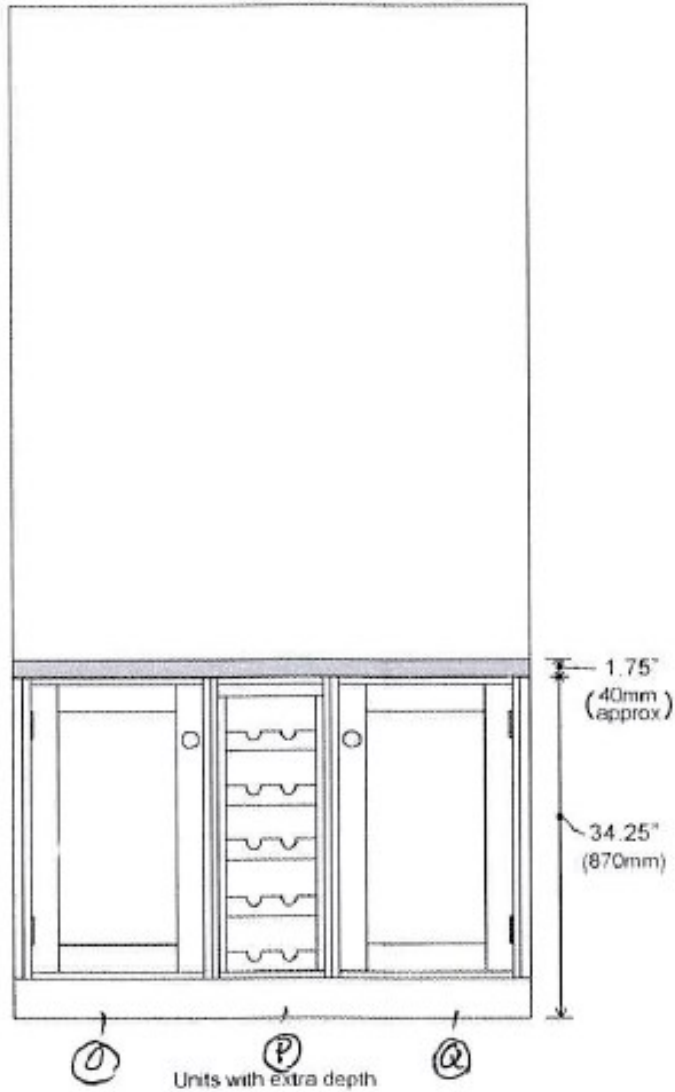


**Drawing 11 - Kitchen Elevations**

**Peninsula Back**



**Drawing 12 - Dining Room Elevation**



- ⓪ 1 Door hi-line base unit + Extra Depth <sup>320</sup> <sup>50</sup>
- Ⓟ Wine Rack base unit Double Depth <sup>233</sup> <sup>35</sup>
- Ⓠ 1 Door hi-line base unit + Extra Depth <sup>330</sup> <sup>50</sup>