

Design and Access Statement Addendum - Plot A

ON00AZ-FPA-XX-XX-RP-A-000008-P01



FLETCHER PRIEST ARCHITECTS AKT II ALINEA HOARE LEA GUSTAFSON PORTER + BOWMAN OFR PEOPLE FRIENDLY SAVILLS STANTEC

Contents

- 1.0 Introduction**
 - 1.1 Executive summary

- 2.0 Design development**
 - 2.1 Level 3 extension
 - 2.2 Plant screen
 - 2.3 Facade materiality
 - 2.4 Glazed facade approach
 - 2.5 Fire escape doors

- 3.0 Revised visuals**

ON00AZ-FPA-XX-XX-RP-A-000008-P01

Revision History

P01	2024.02.02	Planning Issue
-----	------------	----------------

A large, thick, red abstract graphic consisting of several curved, overlapping lines that sweep across the top and right sides of the page. The lines are smooth and fluid, creating a sense of movement and depth.

1.0

Introduction

1.1 Executive summary

1.1 Executive summary

This Design and Access Statement (DAS) addendum has been prepared to set out proposed amendments to 'Plot A' at Oxford North, it should be read alongside the Design and Access Statement from the original submission. The amendments have been developed following a period of design development with input from the design team and specialist contractors.

A pre-application meeting with the Oxford City Council (OCC) planning officers took place on 18th December 2023 to discuss the proposals.





2.0

Design development

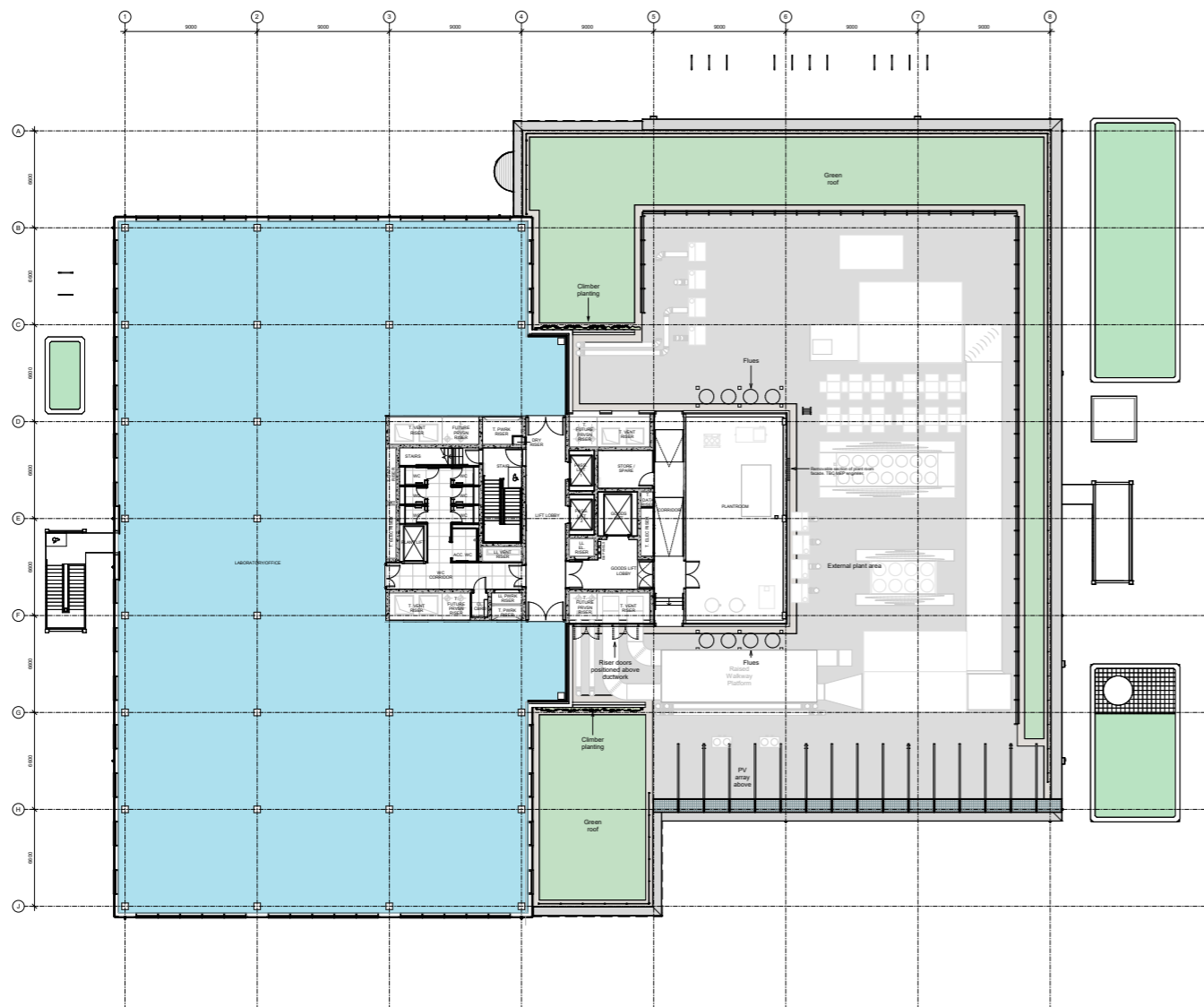
- 2.1 Level 3 extension
- 2.2 Plant screen
- 2.3 Facade materiality
- 2.4 Glazed facade approach
- 2.5 Fire escape doors
- 2.6 Colour
- 2.7 Service pavilions

2.1 Level 3 extension

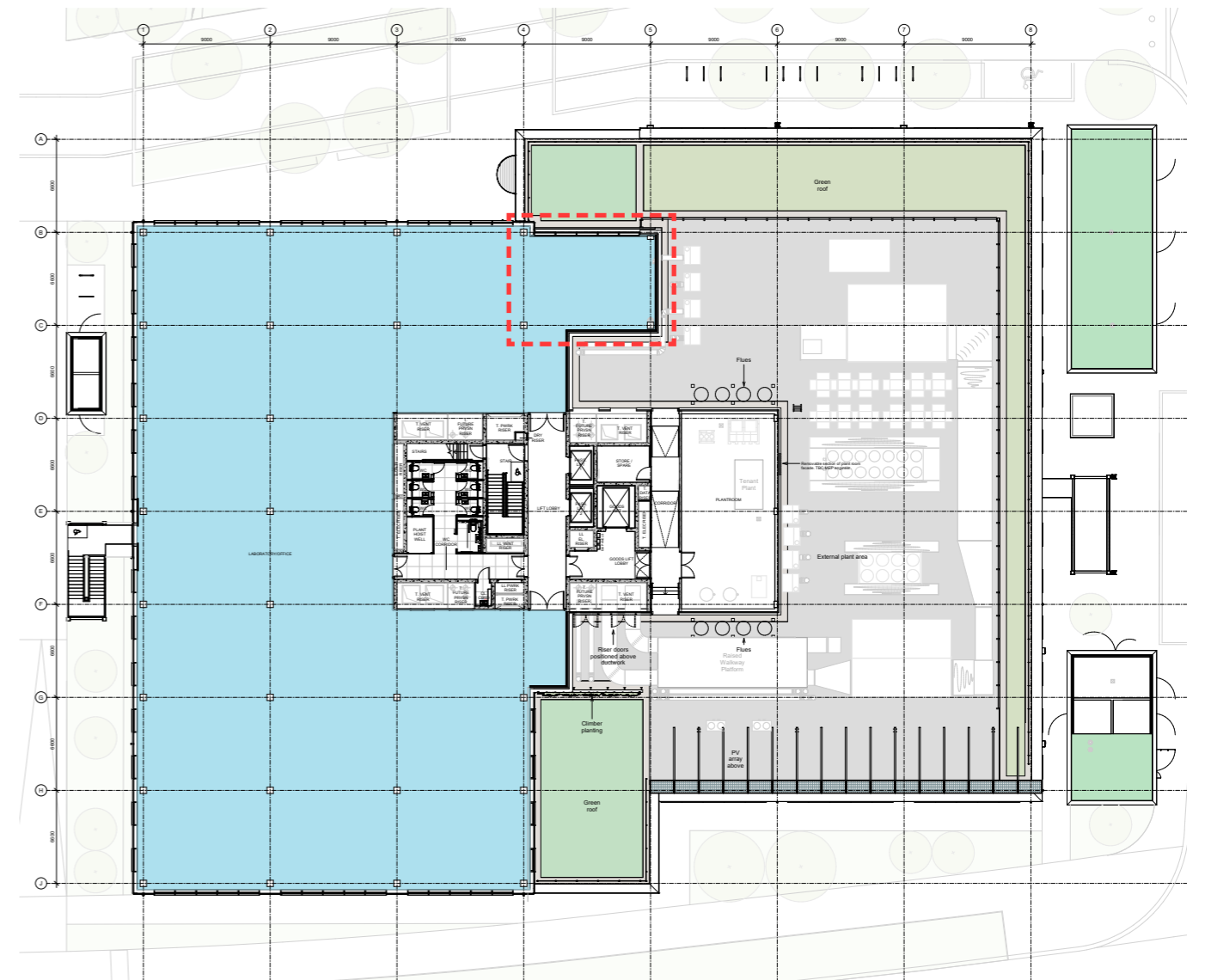
It is proposed to extend the level 3 floorplate by approximately 60sqm to provide additional space with views over the central landscape.

The green roof area lost at level 3 as a result of the change is compensated for by pulling back the line of the adjacent plant screen to provide additional green roof, and through a sedum roof build-up at level 4 above the extension.

The extension has been designed to follow the original design intent - sitting within the glazed central portion of the building to maintain the two stepped 'block' forms.



L03 plan - as consented



L03 plan - proposed, with extension highlighted