

2.1 Level 3 extension



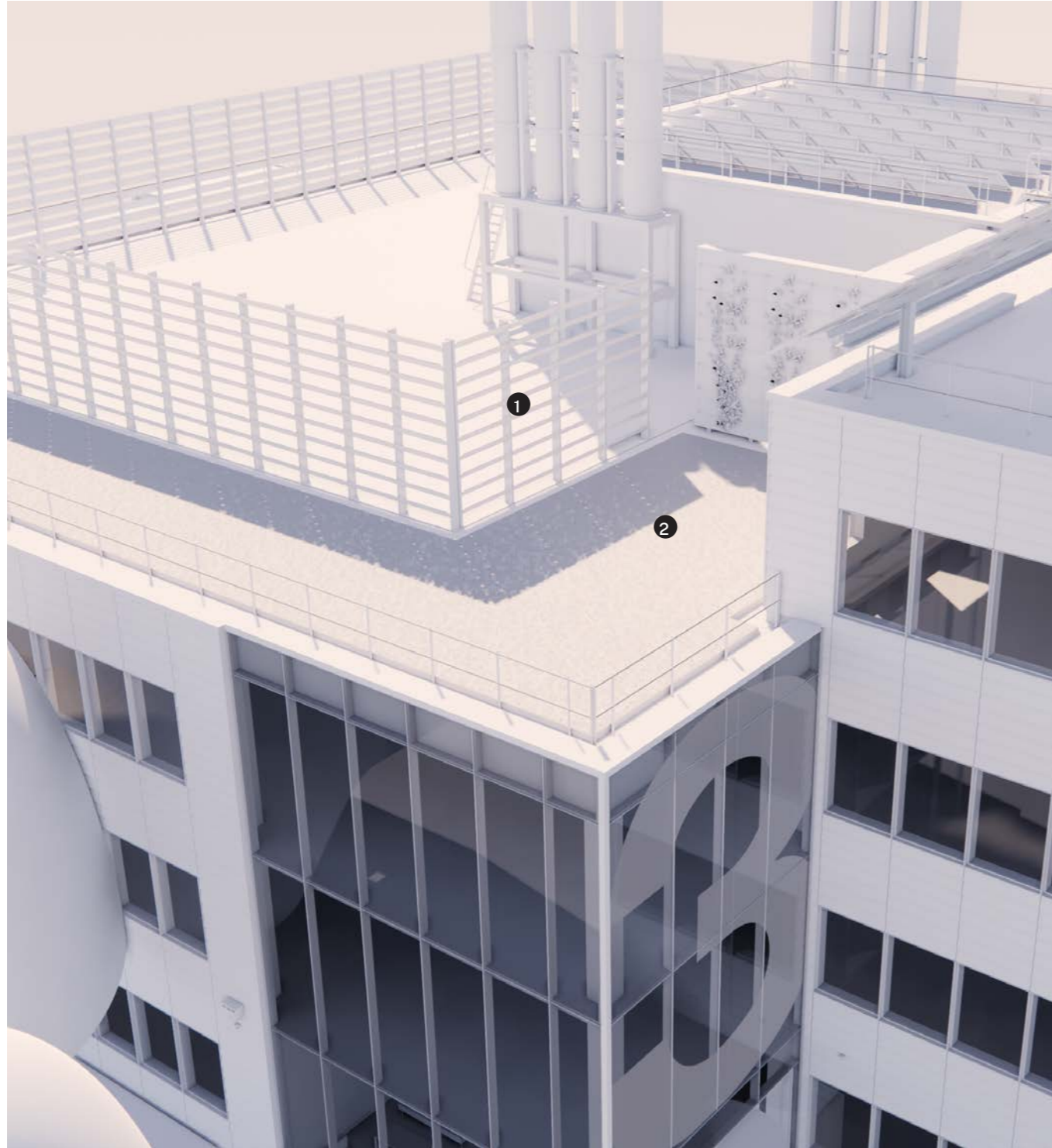
Central landscape visual -as consented



Central landscape visual -proposed, with L03 extension

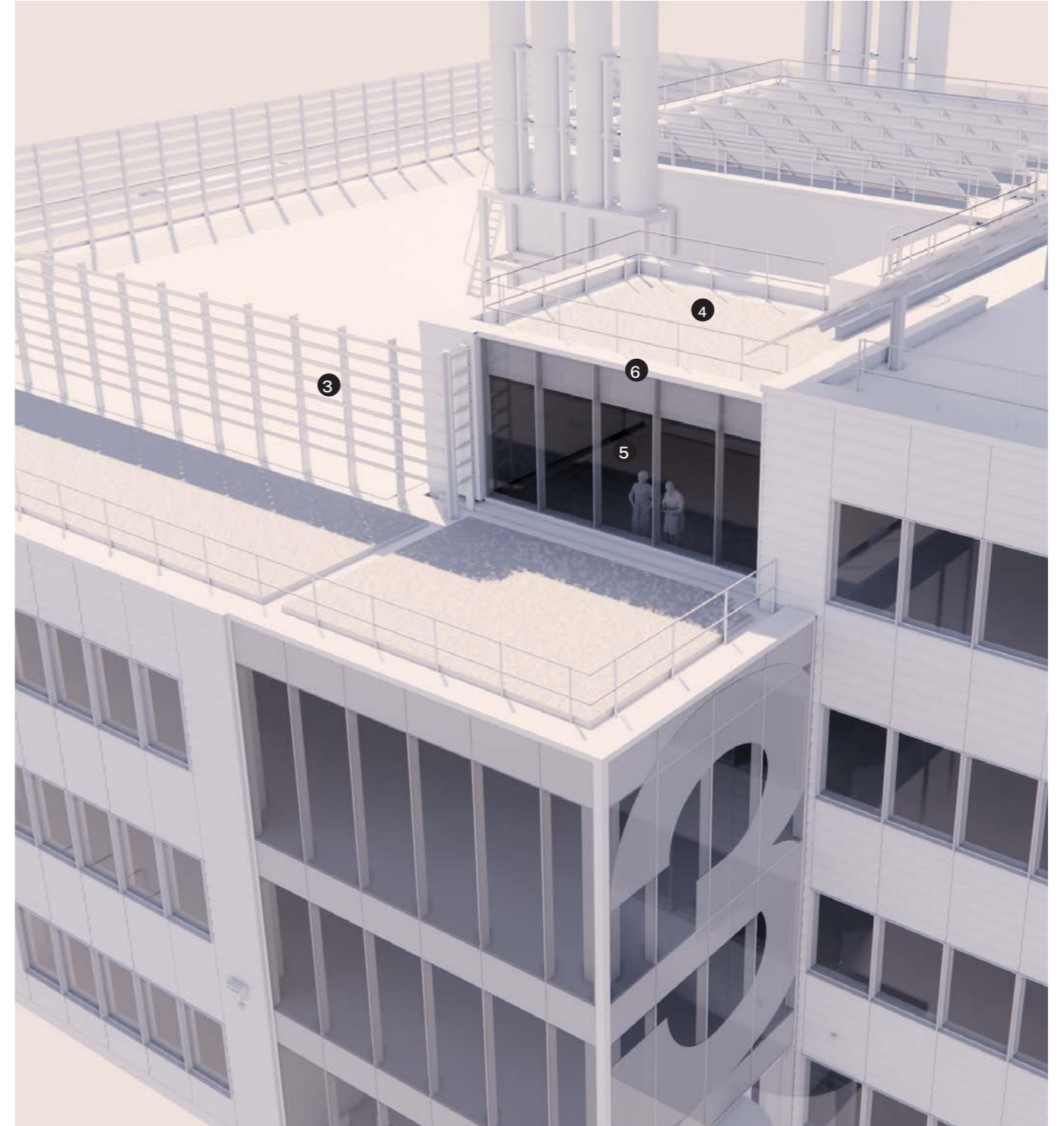
2.1 Level 3 extension

- ① Portion of plant screen to be removed
- ② Area of green roof to be replaced with sedum on extension roof



Aerial from north - as consented

- ③ Plant screen moved back to provide additional green roof area
- ④ Sedum roof
- ⑤ Full-height glazing
- ⑥ Reduced parapet height compared to the remainder of L03 to sit within parameter plan heights

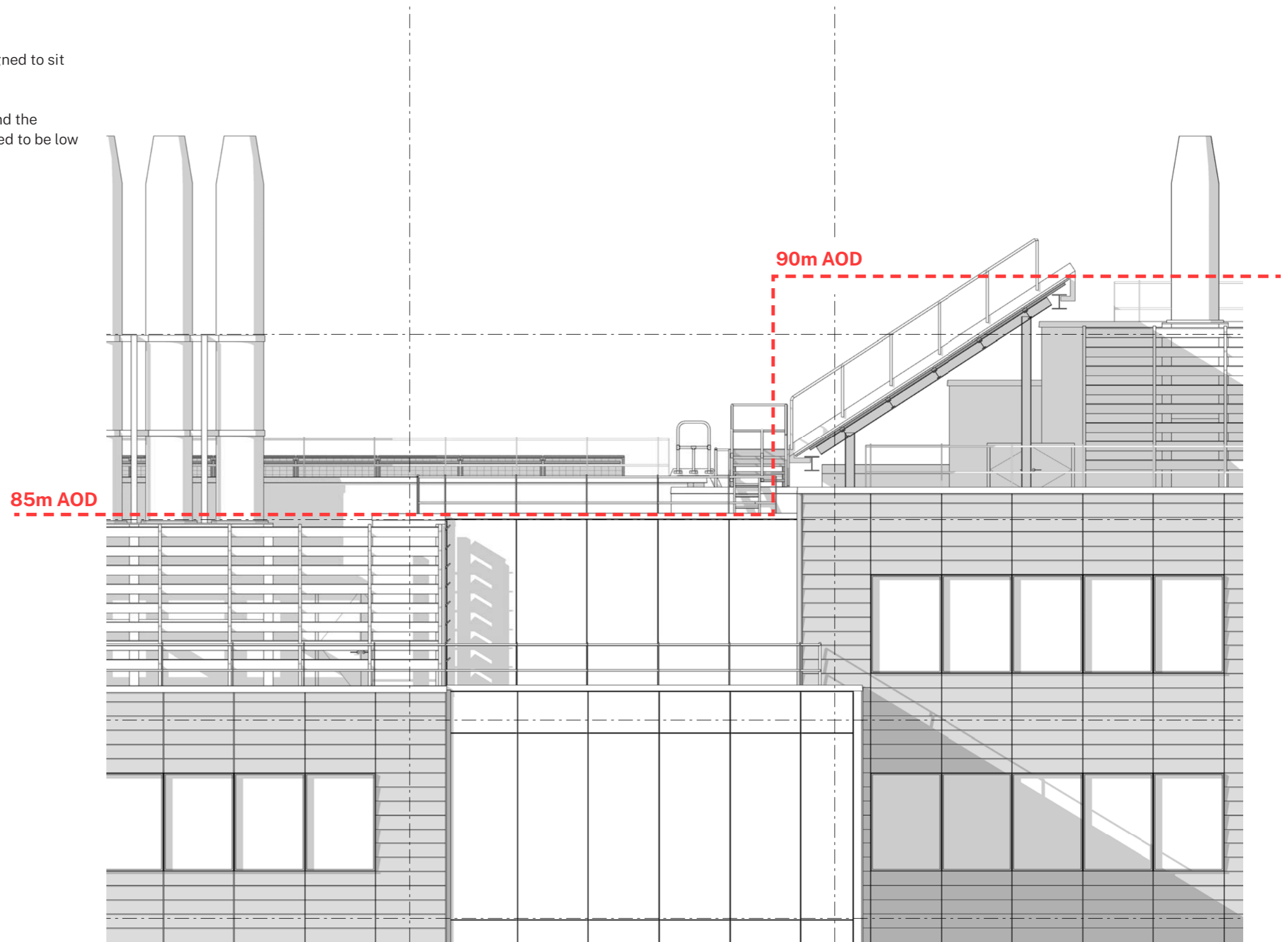


Aerial from north - proposed, with L03 extension

2.1 Level 3 extension

The roof parapet of the extension is designed to sit within the consented parameter heights.

A roof maintenance balustrade sits beyond the parameter by circa. 750mm but is designed to be low visibility.



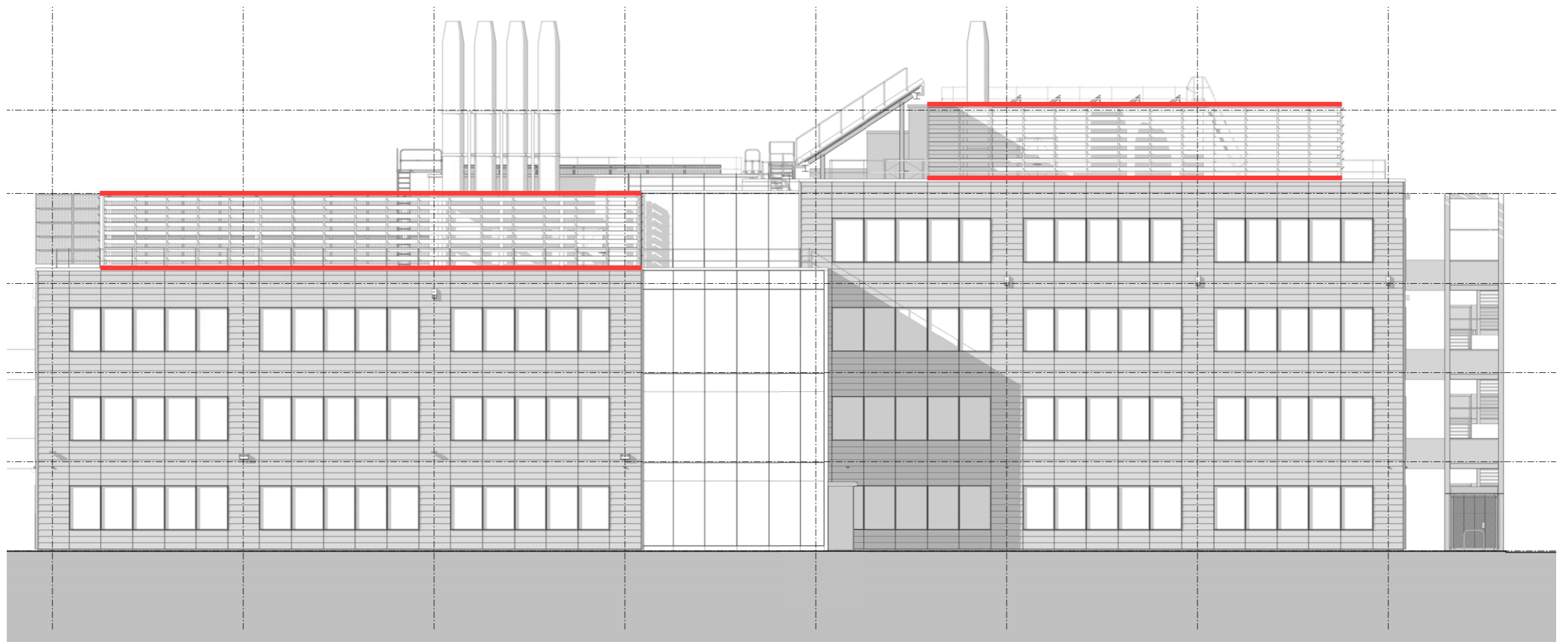
NE elevation with revised L03 extension and consented height parameters overlaid

2.2 Plant screen

Following more detailed design and modelling of the roof level plant equipment since the original planning application was submitted, it has been possible to reduce the height of the plant screen by approximately 300mm.

It is also proposed to remove the bottom louvre blade of the screen as the adjacent facade parapet means it is redundant.

These changes will help reduce material usage and reduce embodied carbon as a result.



North-east elevation-proposed, with the extent of plant screen omitted in red