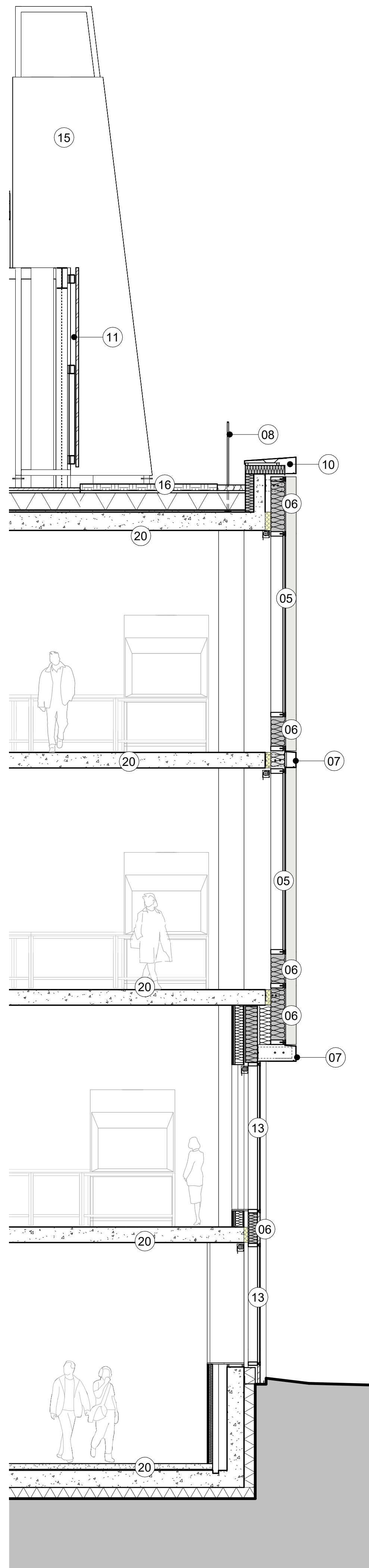
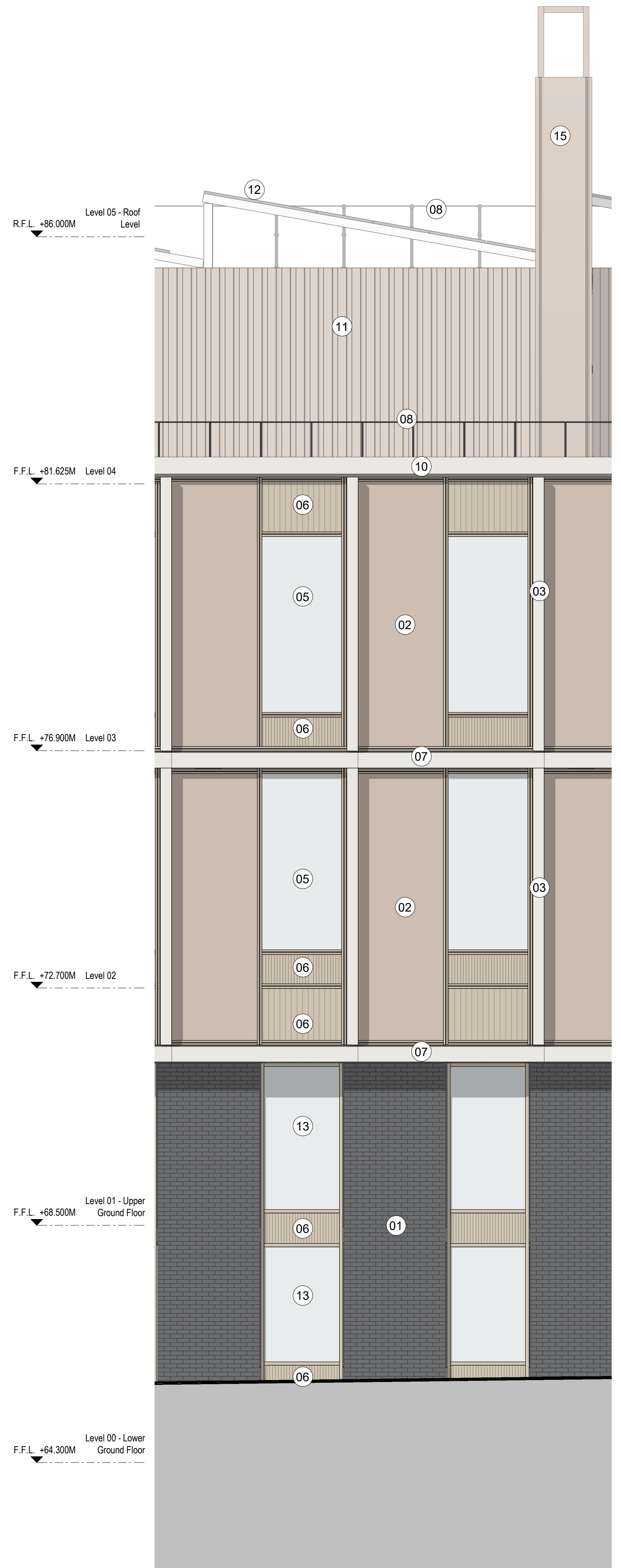


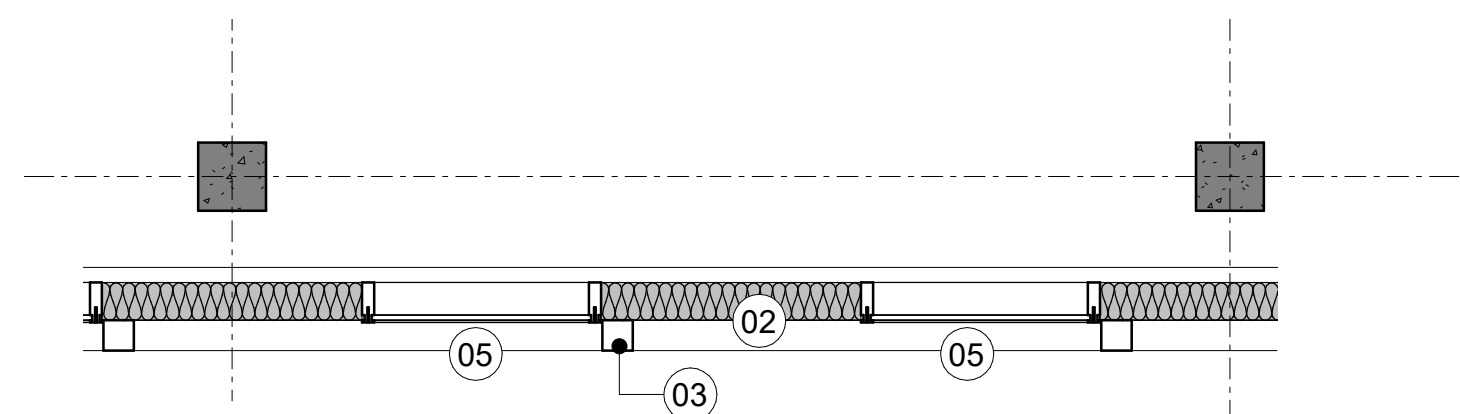
1 Typical Southern Wing Facade Section
1:50



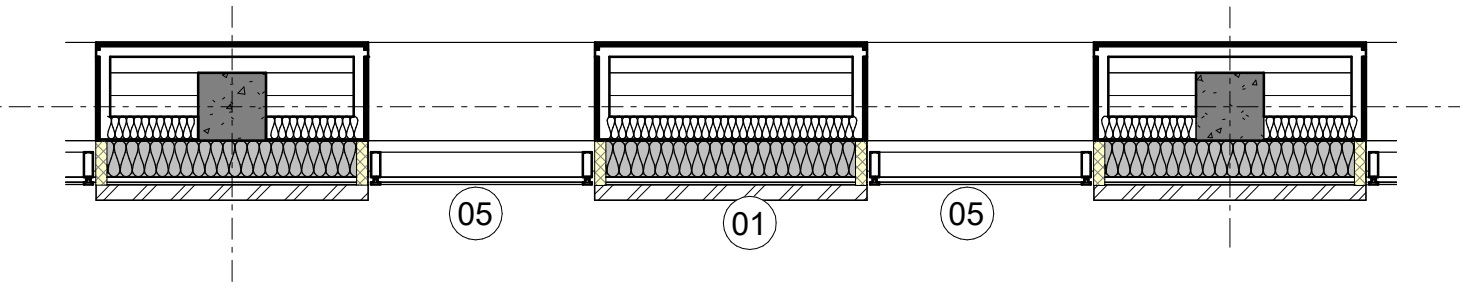
2 Typical Southern Wing Window Section
1:50



3 Typical Southern Wing Bay Elevation
1:50



4 Typical Southern Wing Bay Upper Level Plan
1:50



5 Typical Southern Wing Bay Level 00 Plan
1:50

KEY

- 01 - Brickwork Cladding System
- 02 - Metal Cladding Panel
- 03 - Folded Metal Vertical Profile
- 04 - Metal Composite Panelling
- 05 - Triple Glazed Unitised Curtain Wall System
- 06 - Patterned Metal Spandrel Panel
- 07 - Folded Metal Horizontal Profile
- 08 - Perimeter Metal Guardrail
- 09 - Metal Roof Edge Coping
- 10 - Folded Metal Coping
- 11 - Vertical Metal Louvred Screen
- 12 - Photo-Voltaic Panels
- 13 - Double Glazed Curtain Wall System
- 14 - Cantilevered Metal Canopy
- 15 - Metal Clad Fume Extract Chimney
- 16 - Insulated Inverted Green Roof
- 17 - Warm Sedum Roof
- 18 - Insulated Inverted Roof with Paving to Terrace
- 19 - Insulated Inverted Roof with Paving External Plant Area
- 20 - Concrete Structure
- 21 - External Metal Soffit
- 22 - Slatted Timber Ceiling
- 23 - Integrated Planter

Do not scale. Use figured dimensions only. All dimensions to be checked on site.
All drawings to be read in conjunction with the Architectural Specification.
Any discrepancies between Consultants' drawings to be reported to the Architect before any work commences.
The Contractor's attention is drawn to the Health & Safety matters that have been identified as being potentially hazardous in the Health & Safety Plan. These items should not be considered as a complete and final list.
The work package Contractor's Health & Safety obligations apply to all construction operations.

Issue Status

PLANNING

Client
Oxford North Ventures

WilkinsonEyre

Wilkinson Eyre Architects
33 Bowling Green Lane, London
EC1R 0BJ, United Kingdom
+44 (0) 20 7608 7900 T
+44 (0) 20 7608 7901 F
www.wilkinsonseyre.com

Project
Oxford North Plot B
Drawing Title
Southern Wing Typical Bay Study

Scale at A1
As indicated
Drawing and CAD File Number
01997 - WEA - XX - XX - DR - A - P4001
Rev
P02