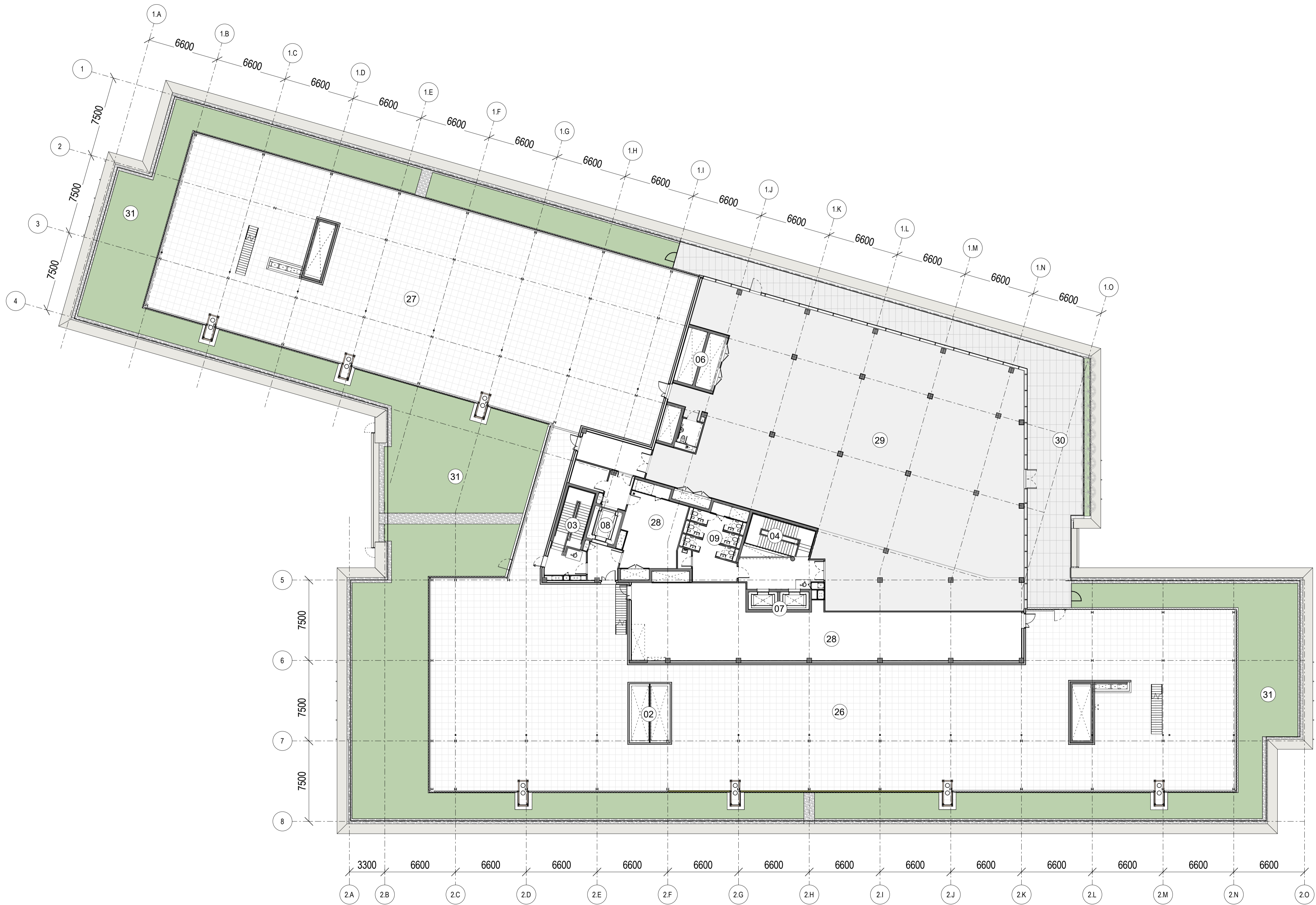


ROOF PLAN LEGEND

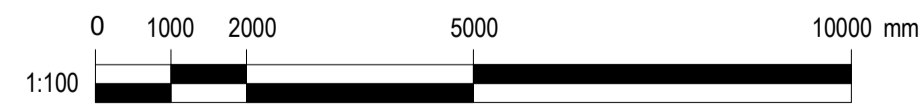
-  **RFS-121**
Liquid Applied Waterproofing - Inverted Roof with paving/ballast
-  **RFS-122**
Liquid Applied Waterproofing - Inverted Roof with tiling
-  **RFS-123**
Liquid Applied Waterproofing - Inverted Green Roof
-  **RFS-123**
Liquid Applied Waterproofing - Inverted Roof with Ballast
-  **RFS-124**
Light weight Sedum Roof
-  **RFS-151**
Concrete Pavers finish to warm roof buildup
-  **RFS-151**
Tapered Bitumen Membrane Warm Roof with sedum finish - 1:60 falls to drainage points
-  **RFS-151**
Bitumen Membrane Warm Roof
-  **RFS-301**
Metal Composite Roofing
-  **RFS-221**
Zinc Standing Seam Roofing
-  Indicative PV layout
-  **AMW-205**
Access Step Over
-  **AMW-201**
Fixed Access Walkway
-  **RFS-461**
Framed Glazed Rooflight
-  **EWS-722**
Metal Vertical Louvred Screen with Insulated Acoustic Backing Panels
-  **BAL-121**
Perimeter Metal Guardrails
-  **BAL-122**
External Metal Gantry Balustrade
-  **BAL-123**
External Metal Gantry Balustrade
-  **BAL-123**
External Metal Gantry Balustrade
-  **BAL-123**
External Metal Gantry Balustrade

KEY

- 01 - Stair - South Wing
- 02 - Services Riser - South Wing
- 03 - Stair - Central Core 2
- 04 - Stair - North Wing
- 05 - Services Riser - North Wing
- 06 - Goods Lift
- 07 - Toilets
- 08 - LV Switch Room
- 09 - Water Storage
- 10 - Comms Room
- 11 - Nitrogen Storage
- 12 - Gas Storage
- 13 - Lab Waste
- 14 - Refuse/Recycling
- 15 - Substation
- 16 - Lobby
- 17 - Post Room
- 18 - FM Room
- 19 - Breakout Space
- 20 - Cycling Storage
- 21 - Shower Block
- 22 - Tenant Space - North Wing
- 23 - Tenant Space - South Wing
- 24 - Comms Room
- 25 - Nitrogen Storage
- 26 - Gas Storage
- 27 - Lab Waste
- 28 - Refuse/Recycling
- 29 - Substation
- 30 - Lobby
- 31 - Post Room
- 32 - FM Room
- 33 - Breakout Space
- 34 - Cycling Storage
- 35 - Shower Block
- 36 - Tenant Space - North Wing
- 37 - Tenant Space - South Wing

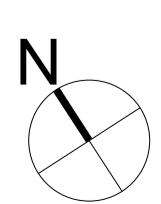


1 Level 04 - Plan
1 : 200



Rev	Date	Description	By	Checked
P03	22/02/24	SECTION 73 SUBMISSION	CG	NK
P02	16/06/23	PLANNING ADDENDUM	MC	NK
P01	03/03/23	ISSUED FOR PLANNING	MC	NK

Do not scale. Use figured dimensions only. All dimensions to be checked on site.
 All drawings to be read in conjunction with the Architectural Specification.
 All drawings to be read in conjunction with the Engineers' documentation.
 Any discrepancies between Consultants' drawings to be reported to the Architect before any work commences.
 The Contractor's attention is drawn to the Health & Safety matters that have been identified as being potentially hazardous in the Health & Safety Plan.
 These items should not be considered as a complete and final list.
 The work package Contractor's Health & Safety obligations apply to all construction operations.



Issue Status

PLANNING

Client

Oxford North Ventures

WilkinsonEyre

Wilkinson Eyre Architects
 33 Bowling Green Lane, London
 EC1R 0BJ, United Kingdom
 +44 (0) 20 7608 7900 T
 +44 (0) 20 7608 7901 F
 www.wilkinsoneye.com

Project
 Oxford North Plot B

Drawing Title

Level 04 - Plan

Scale at A1
 As indicated
 Drawing and CAD File Number
 01997 - WEA - XX - 04 - DR - A - P1004
 Rev
 P03