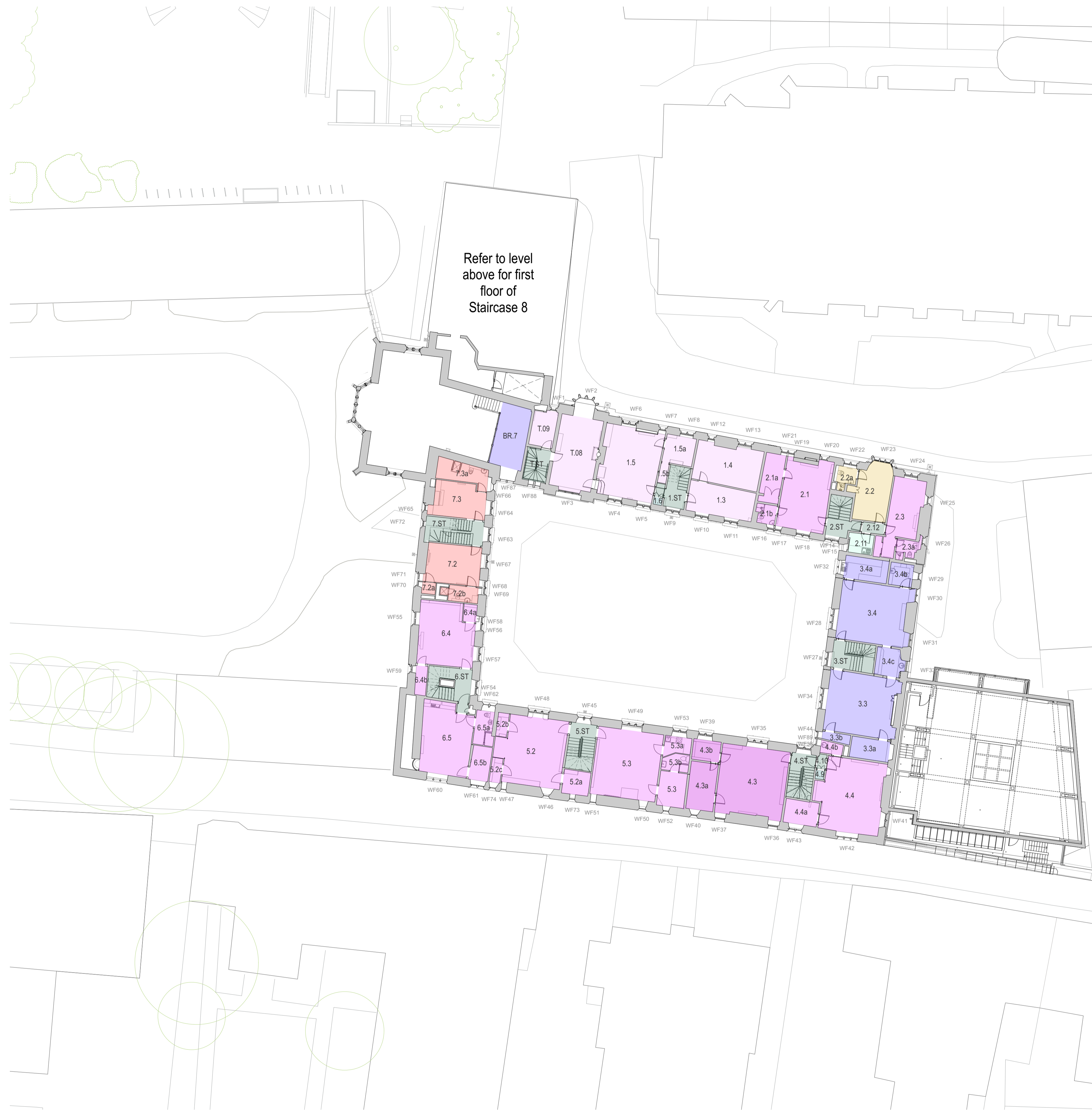


**Old Quad Staircase 1-7 and Tower**

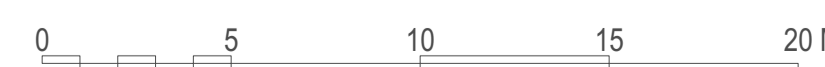
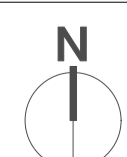
Room Ref.	Room Name
1.3	HR Officer's Office
1.4	HR Manager's Office
1.5	Accounts Office
1.5a	Head Accountant's Office
1.5b	Head Accountant's Kitchenette
1.6	Scouts' Cleaning Store
1.ST	Stair
2.1	Fellow's Office
2.1a	Fellow's Office - Auxiliary
2.1b	Fellow's Office - Bathroom
2.2	Meeting Room / Unallocated
2.2a	Meeting Room - WC
2.3	Fellows' Office
2.3a	Fellows Office - Bathroom
2.11	Kitchenette
2.12	Lobby
2.ST	Stair
3.3	Middle Common Room (MCR)
3.3a	MCR Store
3.3b	MCR Store
3.4	Middle Common Room (MCR)
3.4a	MCR Bar
3.4b	MCR WC
3.4c	MCR Kitchenette
3.ST	Stair
4.3	Shared office / research centre
4.3a	Shared Office - Ancillary
4.3b	Shared Office - Ancillary
4.4	Fellow's Office
4.4a	Fellow's Office - Ancillary
4.4b	Fellow's Office - Kitchenette
4.9	Scouts' Cleaning Store
4.10	Lobby
4.ST	Stair
5.2	Fellow's Office
5.2a	Fellow's Office - Store
5.2b	Fellow's Office - Store
5.2c	Fellow's Office - Store
5.3	Fellow's Office - Ancillary
5.3	Fellow's Office
5.3a	Fellow's Office - Kitchenette
5.3b	Fellow's Office - Bathroom
5.ST	Stair
6.4	Fellow's Office
6.4a	Fellow's Office - Store
6.4b	Fellow's Office - Store
6.5	Fellow's Office
6.5a	Fellow's Office - Bathroom
6.5b	Fellow's Office - Ancillary
6.ST	Stair
7.2	Student Bedroom
7.2a	Student Bedroom - Store
7.2b	Student Bedroom - Bathroom
7.3	Student Bedroom
7.3a	Student Bedroom - Store
7.ST	Stair
BR.7	Senior Common Room Mezzanine
T.08	Bursar's Office
T.09	Non-academic office
T.ST	Stair



**Key**

- Circulation
- WC or shower for communal use
- Reception area
- Communal facilities
- Research centre or shared academic office (5+ people)
- Fellow's Office / other academic office
- Non-academic office
- Bookable room / meeting room
- Common room
- Guest bedroom
- Student bedroom
- Chapel
- Study room
- Plant
- Store
- Scouts' Cleaning Store

Notes



Rev Date	Amendment
15.03.24	Issued for Planning

**WALTERS & COHEN ARCHITECTS**

**Pembroke College - Old Quad Project**

2 Wilkin Street  
London  
NW5 3NL  
Telephone 020 7428 9751  
mail@waltersandcohen.com

Existing Plan - First Floor

Checked by	Scale	Date Drawn	Job No.	Drawing No.	Revision
TL	1:200@A1	05.02.24	2313	PD-0030	-

© This drawing is copyright. Check dimensions on site

**PLANNING**