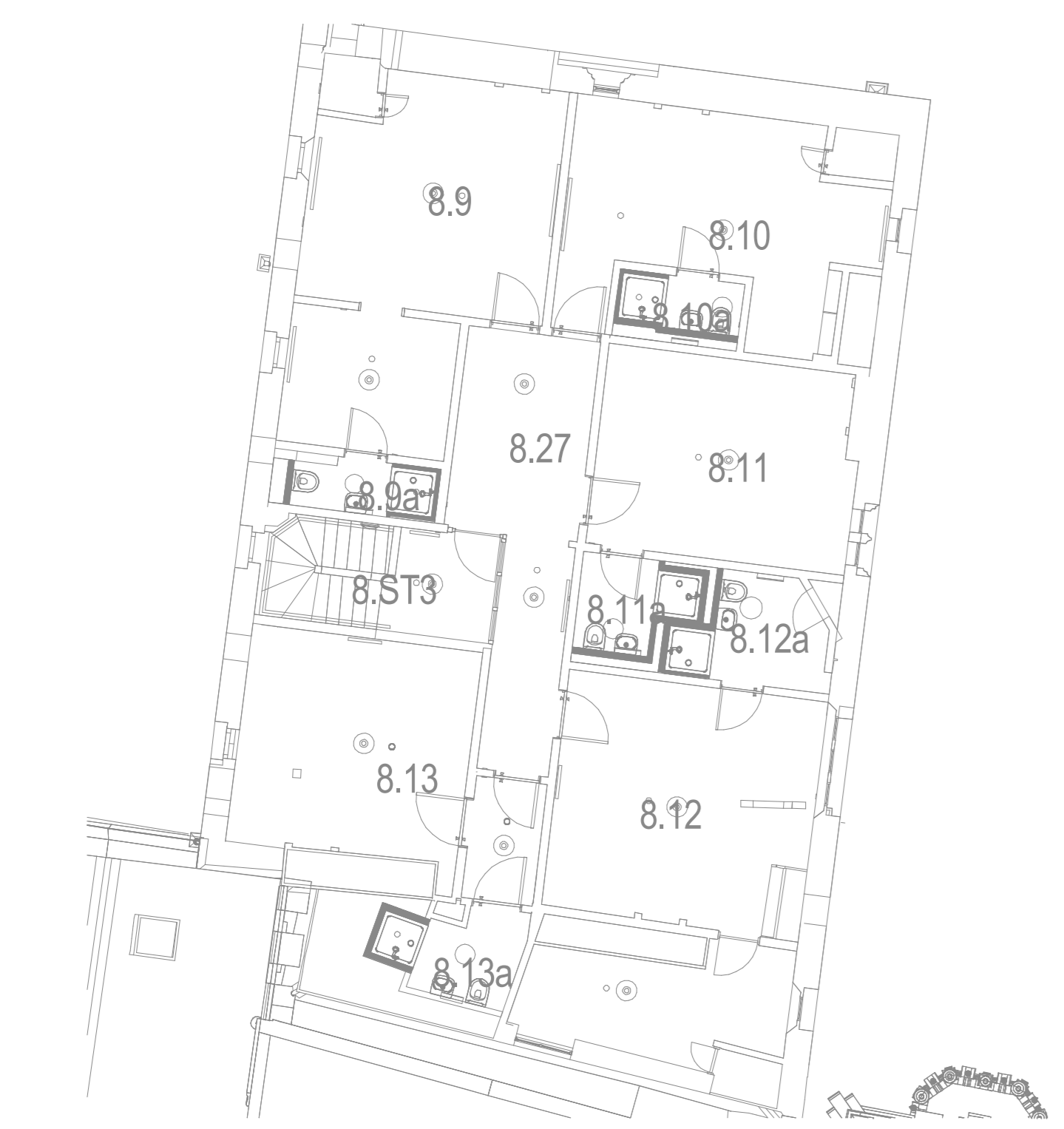


- NOTES**
- Drawing is to be read in conjunction with all relevant MFLP drawings, schematics and specifications.
 - The architect's and structural engineer's information is to be considered in tandem with this drawing.
 - All penetrations are to be agreed with the structural engineer.
 - Refer to structural engineer's information for limitations on locations and sizes of openings in the structure.
 - Drawing is indicative of main distribution penetrations only. Final penetration quantities, locations, sizes and secondary distribution penetrations are to be designed and agreed by the contractor based on final design and subcontractor installation drawings.
 - Where structurally beneficial, in some cases penetrations may be combined, split or the aspect ratio changed. All changes of this nature are to be agreed with the structural and services consultants prior to installation.
 - Floor and ceiling of plantrooms, risers, and switchrooms to be thoroughly cleaned and painted with two coats of clear dust sealant prior to services installation.
 - Walls of plantrooms, risers, switchrooms and risers to be painted with two coats of white emulsion prior to services installation.
 - M&E contractor is responsible for preparing builders work drawings based on their services installation drawings.
 - M&E contractor is responsible for setting out of all builders work penetrations.
 - The following items in the entire building are to be electrically bonded in accordance with BS 7430 and BS 7871 to main earth terminal by M&E contractor: metal access ladders, access staircases, flooring in risers, plant step-overs, roof top plant, ductwork, metal pipework, metal ceilings, metal floors.
 - All doors to risers are to have fire rating of riser shaft. Refer to architects drawings for details.
 - All risers to be fire rated in accordance with architects fire compartmentation drawings.
 - M&E contractor is responsible for obtaining all secondary steelwork support structures associated with the M&E services.
 - M&E contractor is responsible for detailing and setting out builders work plinths for plant.
 - All penetrations in roof to have 100 wide and 100 high gasket associated with them, water proofing of services penetration through roof to architects detail.
 - All lift shafts to be painted with two coats of white emulsion prior to installation of lifts. Paint specification to be agreed with lift specialist.

- KEY**
- BUILDERSWORK - Floor penetration
 - BUILDERSWORK - Wall penetration
 - ⊙@** = Width in mm
 - ** = Length in mm
 - ∅** = Diameter in mm
 - ⊙@** = Height in mm
 - ** = Length in mm
 - ∅** = Diameter in mm



2 500 - Builders Work in Connection - Level 03 (Staircase 8)
1 : 100



1 500 - Builders Work in Connection - Loft (Old Quad)
1 : 100