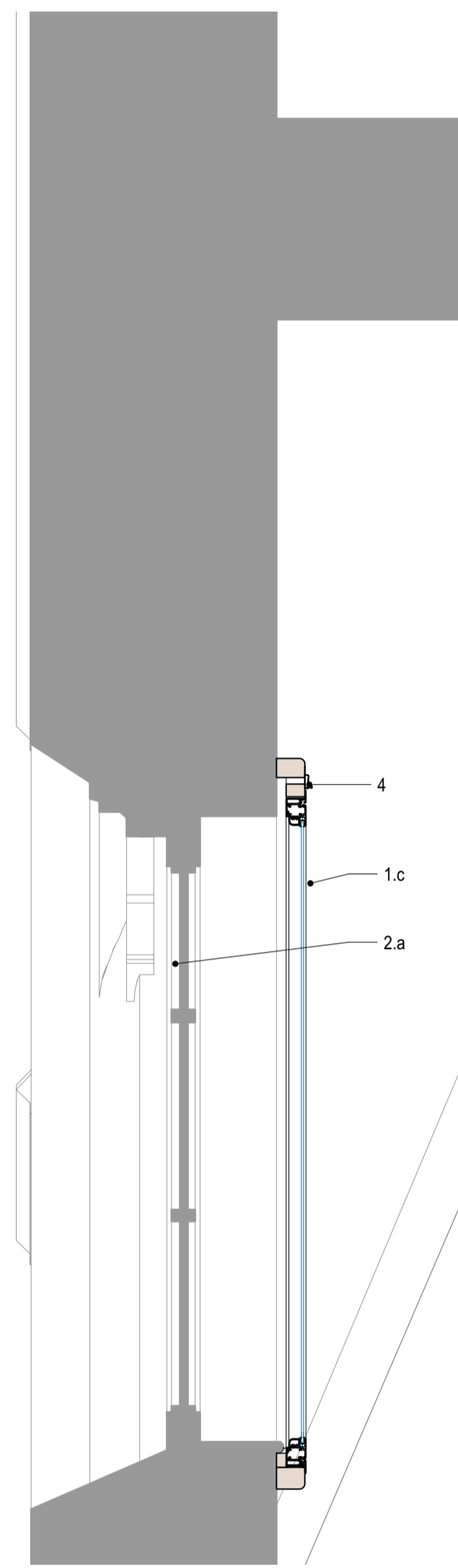


Secondary Glazing Type TH-14  
Elevation  
1:10 @ A1



Secondary Glazing Type TH-14  
Section  
1:10 @ A1

**Key:**

- 1. Secondary Glazing
- 1.a Secondary Glazing – Horizontal Sliding
- 1.b Secondary Glazing – Vertical Sliding
- 1.c Secondary Glazing – Hinge Casement
- 1.d Secondary Glazing – Lift-out
- 1.e Secondary Glazing – Fixed Light
- 1.f Secondary Glazing – Half Hour Fire

- 2. Existing Window
- 2.a Existing Window – Hinged Casement
- 2.b Existing Window – Sash Window
- 2.c Existing Window – Fixed Window

3. Coupling transom

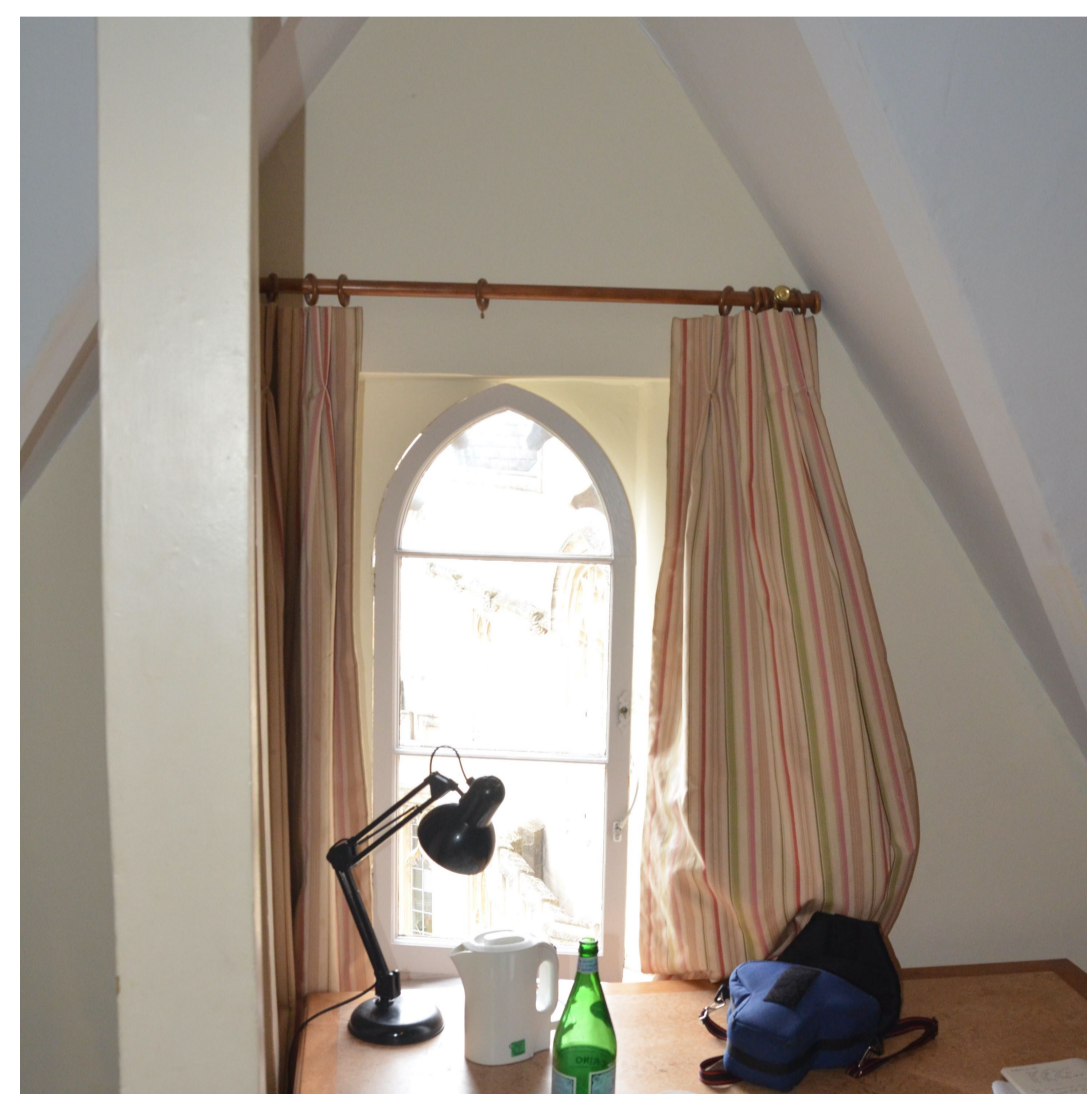
4. Trickle Vent

**Notes:**

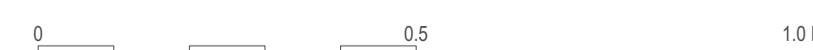
- This drawing is to be read with Secondary Glazing Edge Conditions (2313-PD-3150) and Window Schedule (2313-PD-5100)

- Window edge conditions and relationship with existing window can differ between different windows of the same type. Please refer to the Edge Conditions (2313-PD-3150) and the Window Schedule (2313-PD-5100).

- Dimensions may vary between windows of the same type. All windows will need to be individually measured by the contractor prior to fabrication of the secondary glazing.



Existing Window TH-14



Rev	Date	Amendment
--	15.03.24	Issued for Planning

<b>WALTERS &amp; COHEN ARCHITECTS</b>		2 Wilkin Street London NW5 3NL mail@waltersandcohen.com		Telephone 020 7428 9751	
<b>Pembroke College - Old Quad</b>			<b>Secondary Glazing Type TH-14</b>		
Checked by TL	Scale 1:10@A1	Date Drawn 06.02.24	Job No. 2313	Drawing No. PD-3133	Revision -
© This drawing is copyright. Check dimensions on site					

**PLANNING**