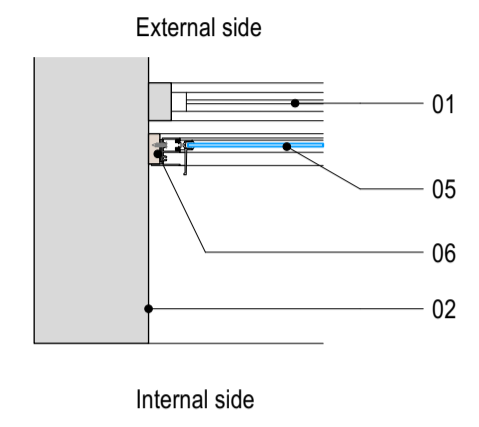
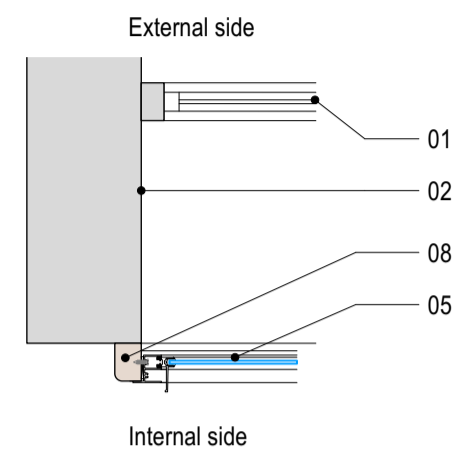


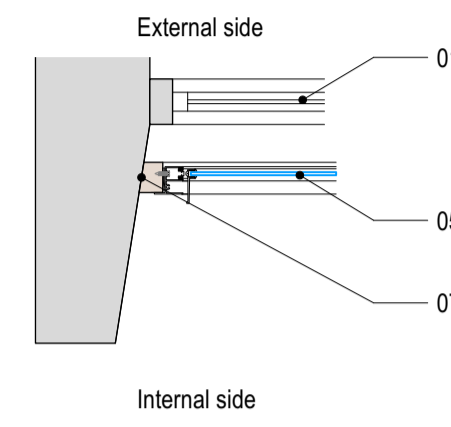
Jamb Detail 01
Secondary glazing installed on internal side of deep reveal
1:10 @ A1



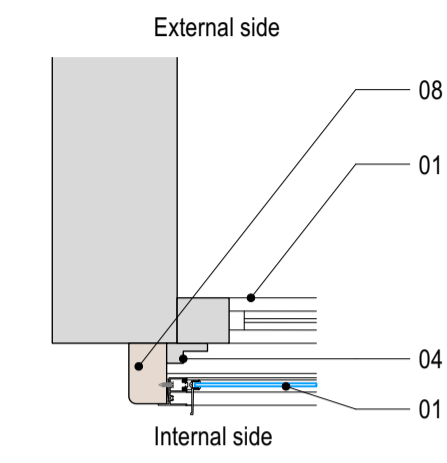
Jamb Detail 02
Secondary glazing installed on window side of deep reveal
1:10 @ A1



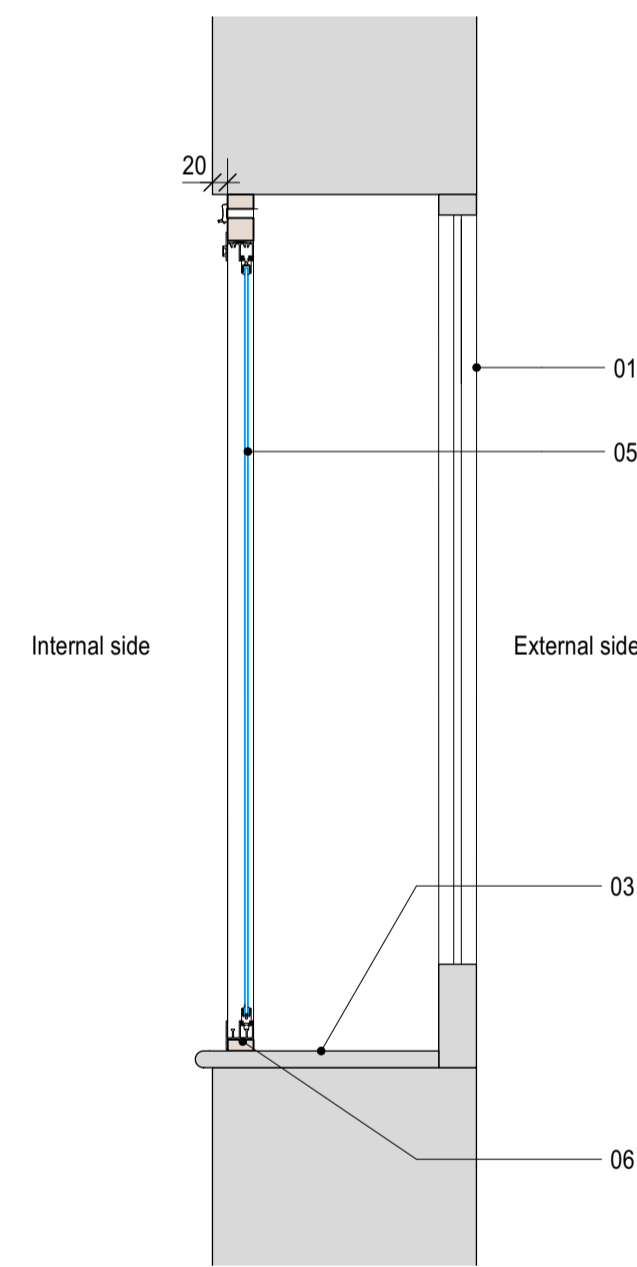
Jamb Detail 03
Secondary glazing face fixed to wall around deep reveal to allow for inward-opening window
1:10 @ A1



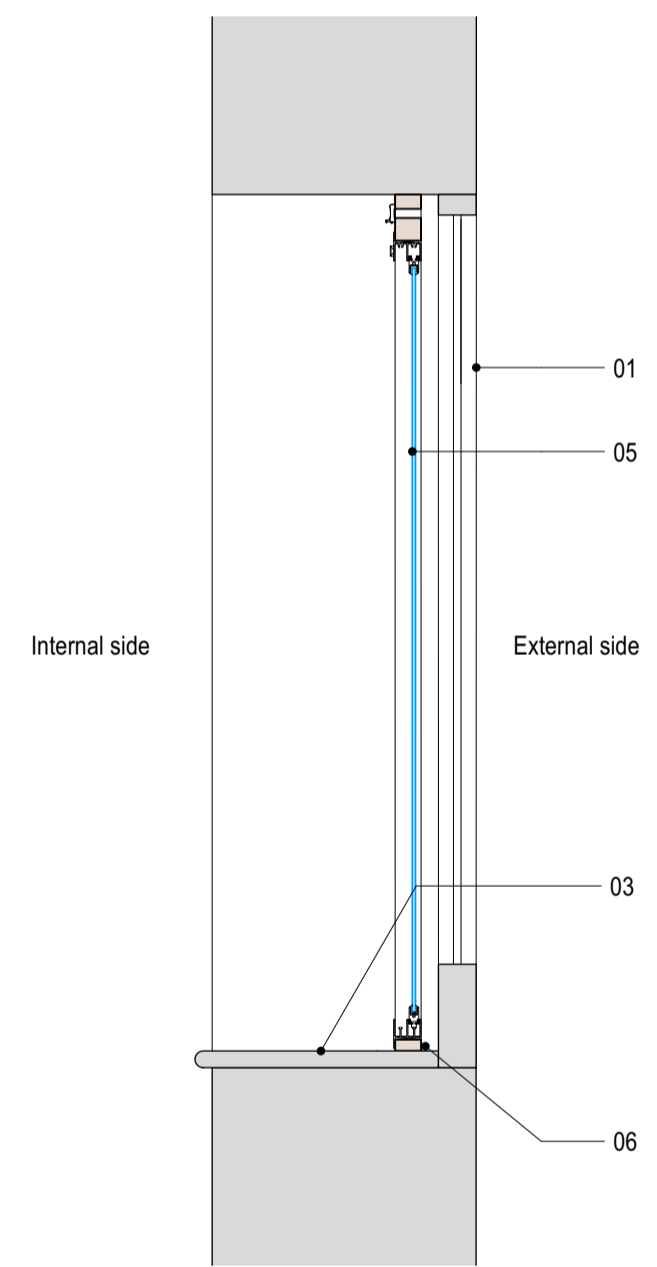
Jamb Detail 04
Secondary glazing fixed into angled reveal
1:10 @ A1



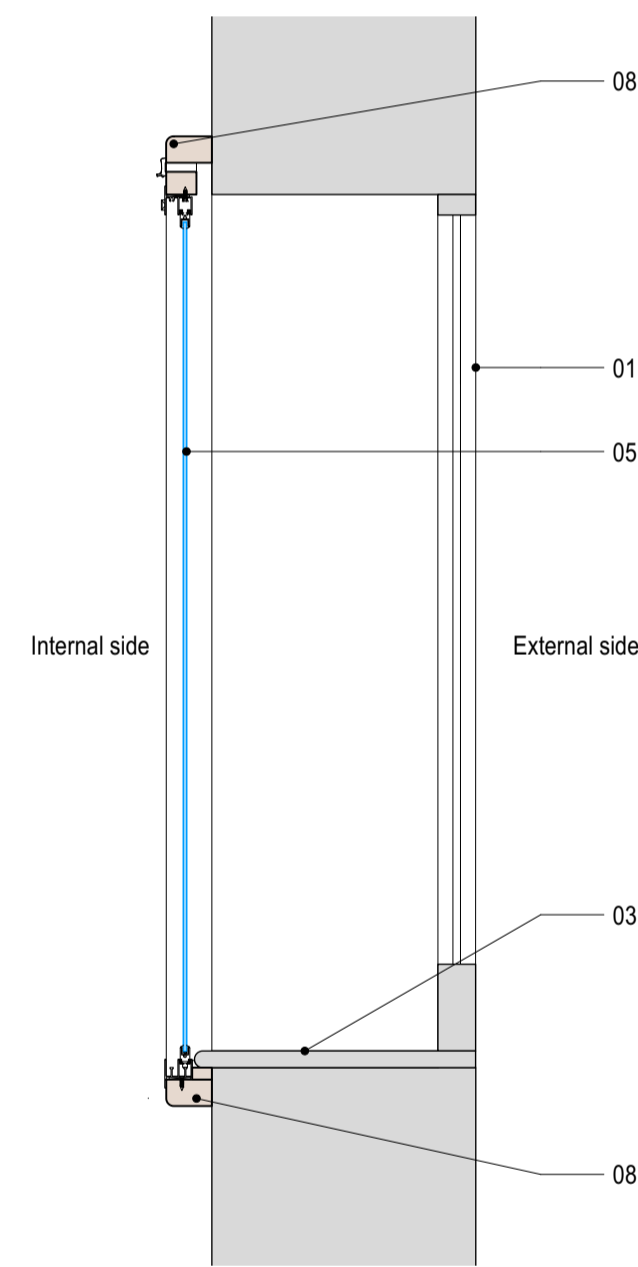
Jamb Detail 05
Secondary glazing face fixed around decorative architrave or sash box, where this is flush with the internal face of the wall.
1:10 @ A1



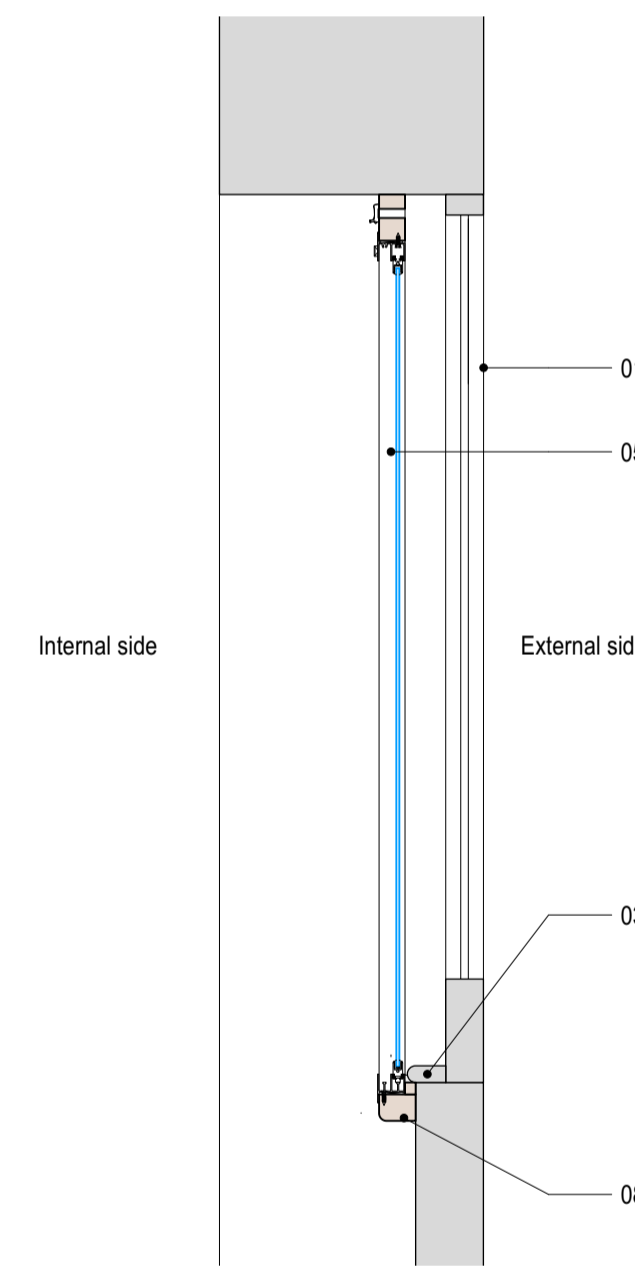
Head / Cill Detail 01
Secondary glazing installed on internal side of deep reveal
1:10 @ A1



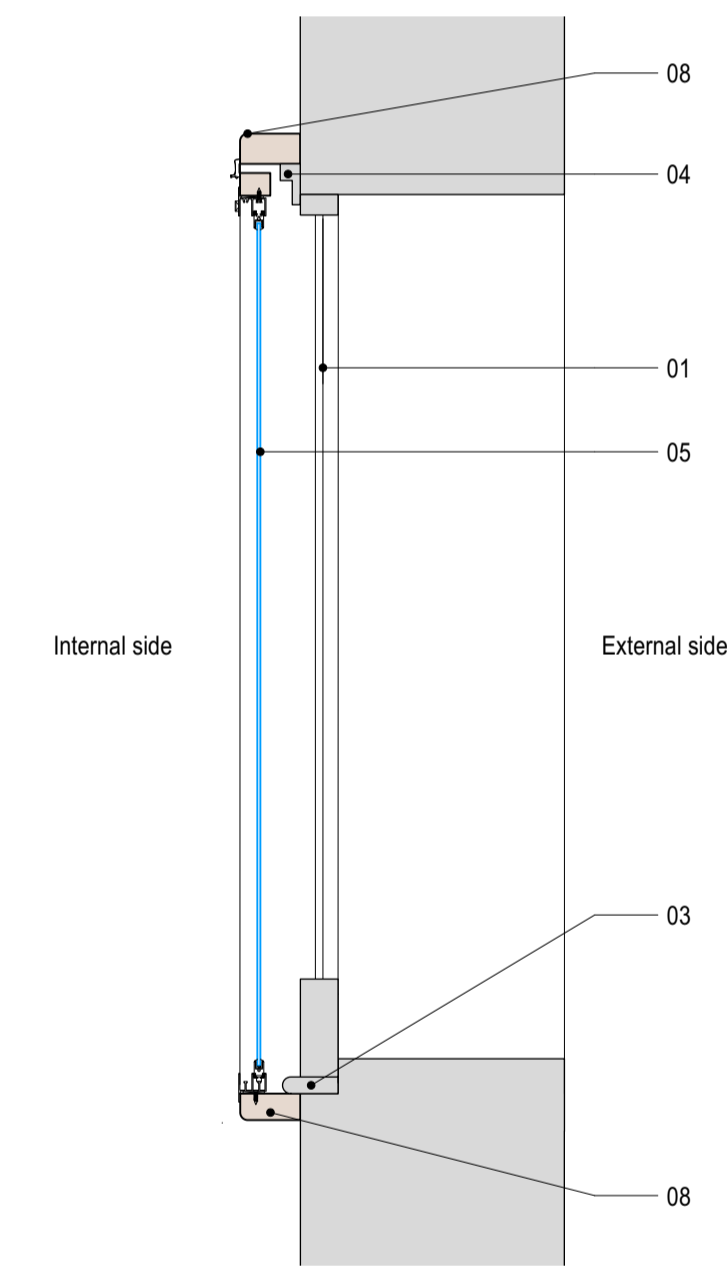
Head / Cill Detail 02
Secondary glazing installed on window side of deep reveal
1:10 @ A1



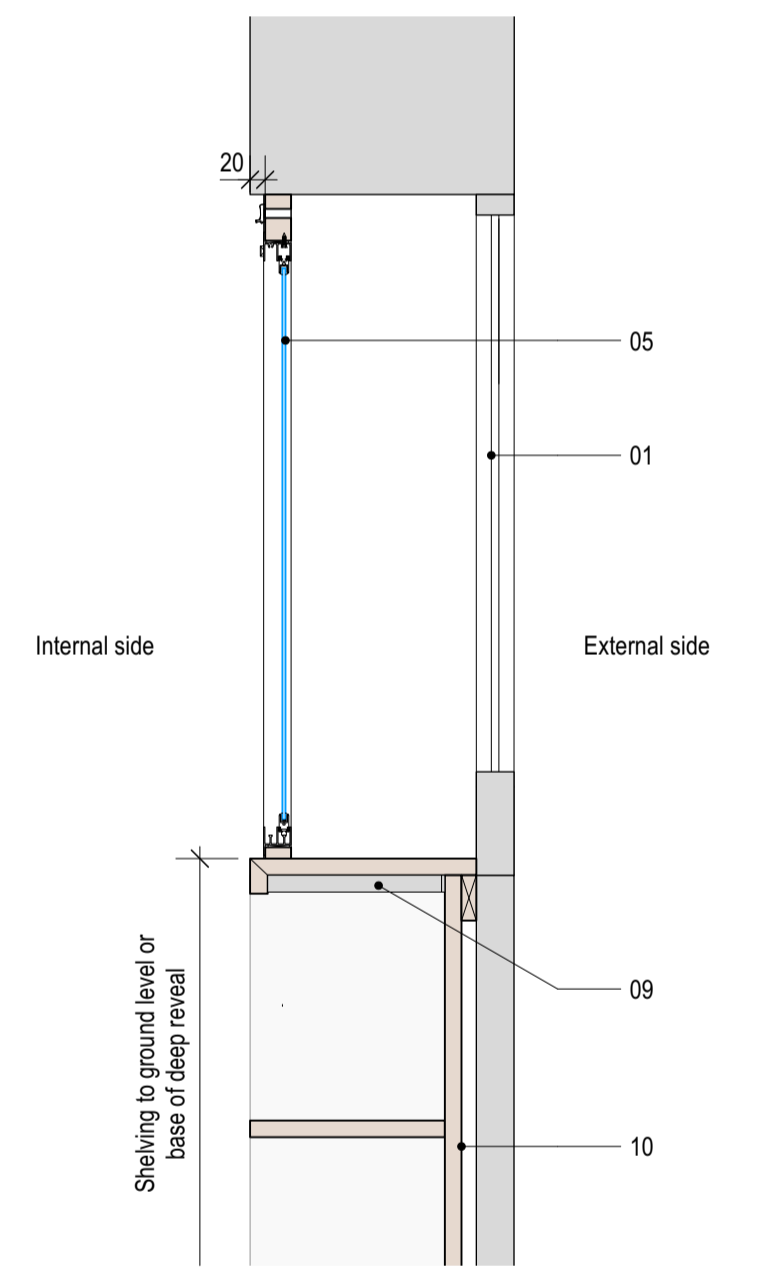
Head / Cill Detail 03
Secondary glazing face fixed to wall around deep reveal to allow for inward-opening window
1:10 @ A1



Head / Cill Detail 04
Secondary glazing fixed within deep reveal to head but face fixed at cill
1:10 @ A1



Head / Cill Detail 05
Secondary glazing face fixed around decorative architrave or sash box, where this is flush with the internal face of the wall.
1:10 @ A1



Head / Cill Detail 06
Secondary glazing installed within deep reveal. Cill extended and open shelving added underneath, to the full vertical extent of the deep reveal.
1:10 @ A1

Notes

- 01. Existing window
- 02. Existing reveal
- 03. Existing cill. Allow for adding supporting brackets to cill where necessary.
- 04. Existing decorative architrave or sash box
- 05. Proposed secondary glazing
- 06. Timber fixing ground for secondary glazing, painted white
- 07. Timber fixing ground cut at an angle to suit reveal
- 08. Timber fixing ground with radiused edge
- 09. Extended cill with metal support bracket
- 10. Open shelving

This drawing is intended to represent the interfaces around the edge of secondary glazing only. Refer to Z313-PR-3100 series drawings for secondary glazing configuration, opening type, position of trickle vents, etc.

Notes

Rev	Date	Amendment
--	15.03.24	Issued for Planning



WALTERS & COHEN ARCHITECTS

Pembroke College Rokos and Old Quad

2 Wilkin Street
London
NW5 3NL

Telephone 020 7428 9751
mail@waltersandcohen.com

Checked by	Scale	Date Drawn	Job No.	Drawing No.	Revision
TL	1:10@A1	06.01.24	2313	PD-3150	-

© This drawing is copyright. Do not scale. Check dimensions on site

PLANNING

Secondary Glazing - Typical Edge Conditions