

GENERAL NOTES

1. Do not scale from this drawing.
2. Print this drawing in colour.
3. This drawing is to be read in conjunction with all other MXF documents (drawings, schedules and specifications) along with other design team documentation.
4. All components installed within piped water services installation are to be WRAS approved, suitable for use on a potable water system and be in accordance with the requirements of the local water company.
5. Sanitaryware specified by others. Refer to the Architects and Structural Engineers information for additional details.
6. This drawing indicates main distribution routes for piped water services. Provide final connections from all main runs to sanitaryware and all other equipment requiring a water supply.
7. Provide air vents to all system high points and drain down valves to all system low points (not shown on drawing).

PROJECT SPECIFIC NOTES

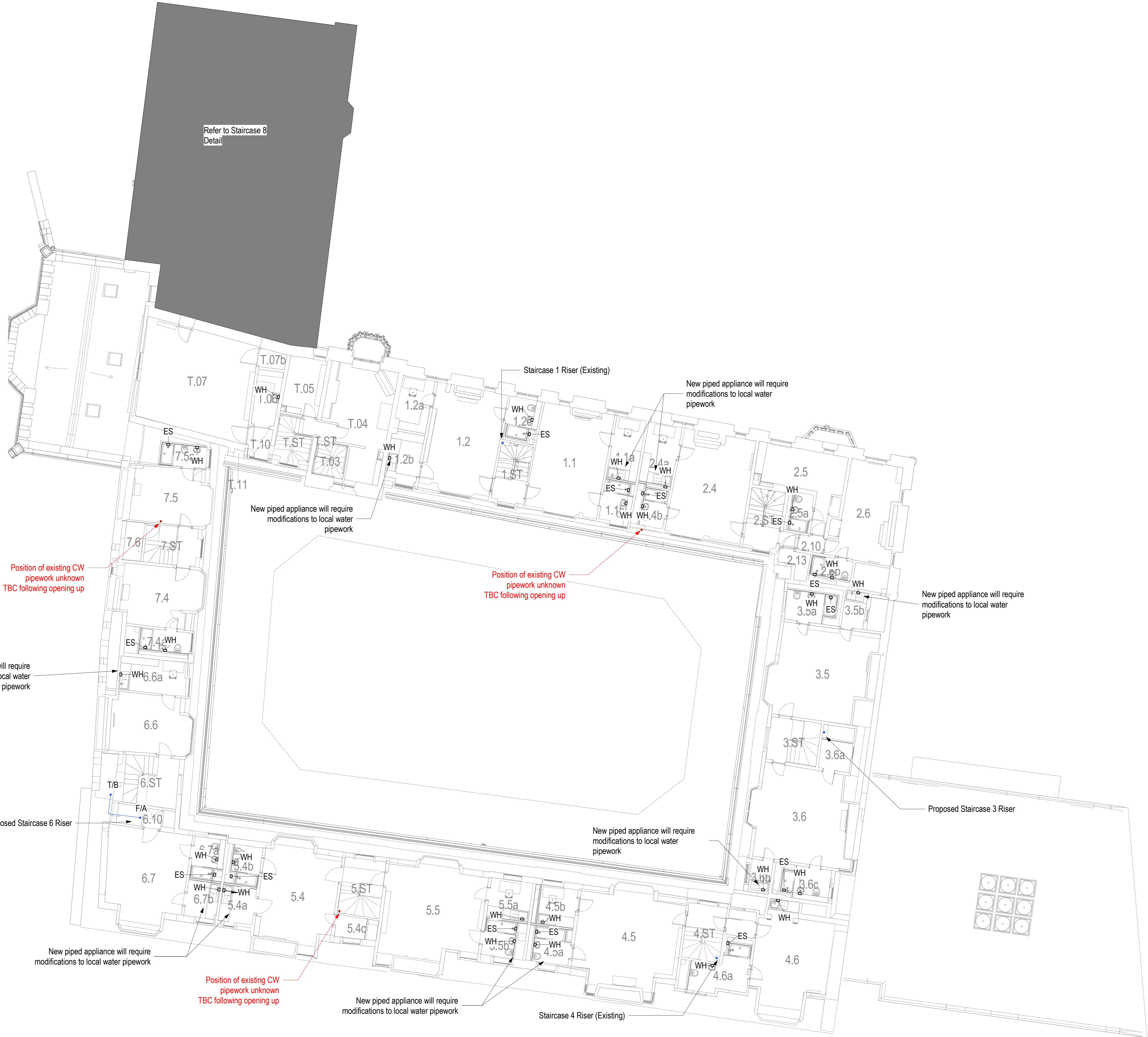
1. For internal distribution of pipework refer to typical staircase drawing J7411-MXF-S6-XX-CO-SPM-00100 (of 2) (2/2)
2. Where service routes cross fire compartmentation lines, as defined by a fire specialist, suitable freestopping is to be installed to comply with the fire strategy.
3. Allow space for instantaneous electric water of dimensions 312h x 177w x 100d mm beneath counter or in concealed location adjacent to sink, minimum clearances are 100mm above, 200mm left and 100mm right. Allow 200mm horizontal space between fused spur and edge of water heater casing for cable conduit, allow 100mm horizontal clearance between nearest pipe connection on heater to combine of sink for flexible pipe connection. Subject to final specification at Stage 4.
4. For electrical connections refer to "On Site Guide to the Wiring Regulations" to ensure installation is in accordance with BS 7671:2018 (including recent amendments).
5. New boosted cold water risers are proposed to run along the route of existing boosted cold water risers. The routes of the existing risers have not been established therefore this pipework is not shown in the layouts. If this pipework route cannot be established on site, then this will be subject to opening up works. Validation of assumed existing and new service routes will require opening up works before final routes are agreed at Stage 4.
6. Validation of assumed existing and new service routes will require opening up works before final routes are agreed at Stage 4.

KEY

- Domestic Boosted Cold Water
- Mains Cold Water
- ▲ Mixed Water Outlet
- Instantaneous Water Heater
- FA From Above
- TB To Below
- WH Water Heater
- ES Electric Shower



500 - Piped Supply (Detail) - Level 02 (Staircase 8) - Staircase 8
1 : 100



500 - Piped Supply (Detail) - Level 02 - Old Quad
1 : 100