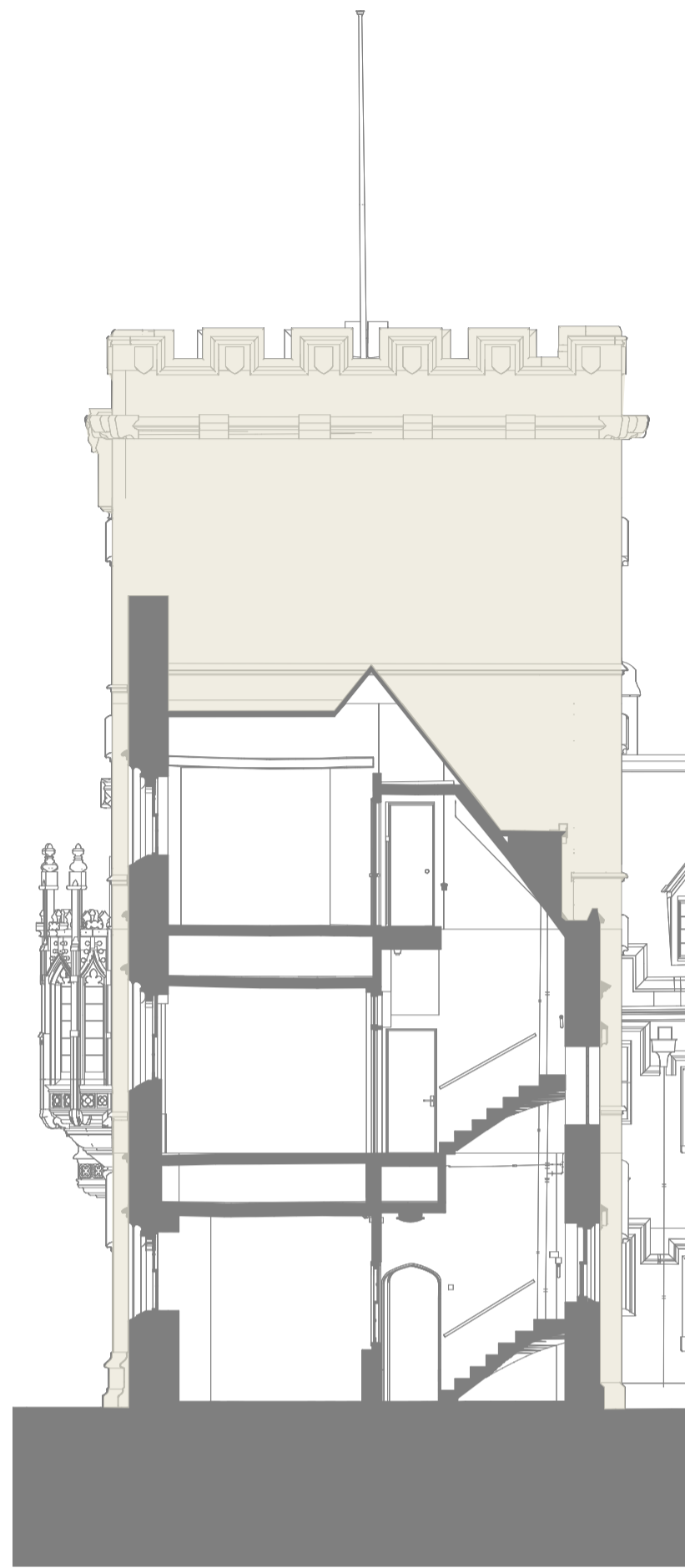
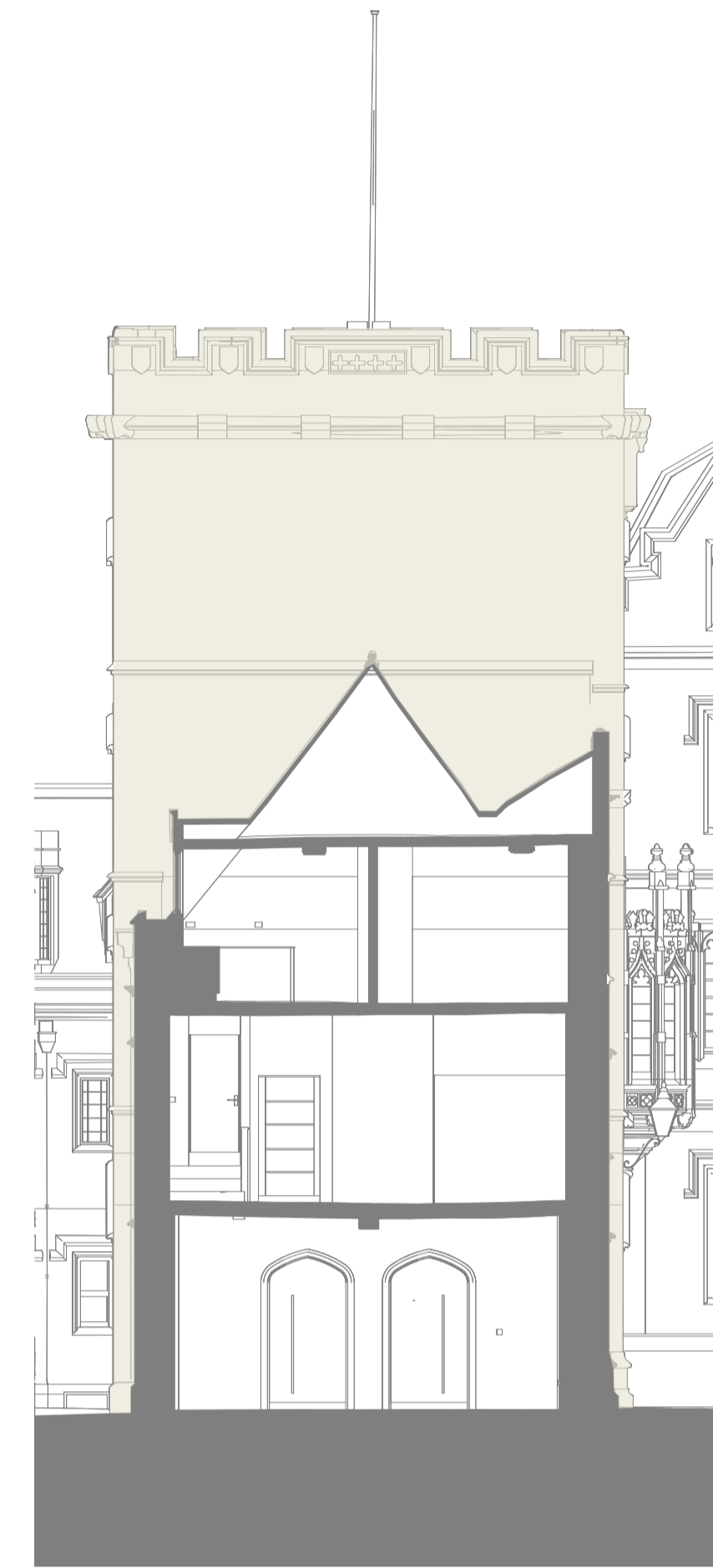




**Elevation 15**  
Staircase 8 south elevation  
1:100@A1



**Elevation 16**  
Tower west elevation  
1:100@A1



**Elevation 17**  
Tower east elevation  
1:100@A1

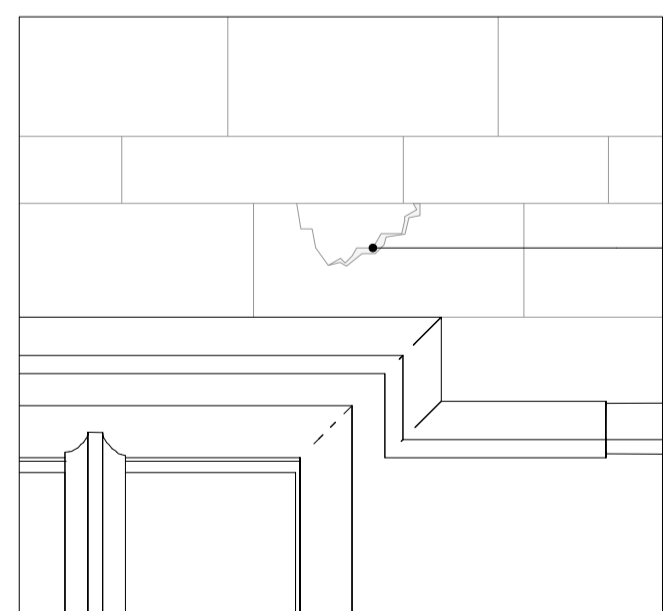
**Stonework repairs and cleaning**

Stonework to be sensitively cleaned by a suitable specialist, to remove atmospheric soiling and water staining.

High level inspection to be carried out to locate any blown faces. Blown faces to be patch repaired as per Detail 01

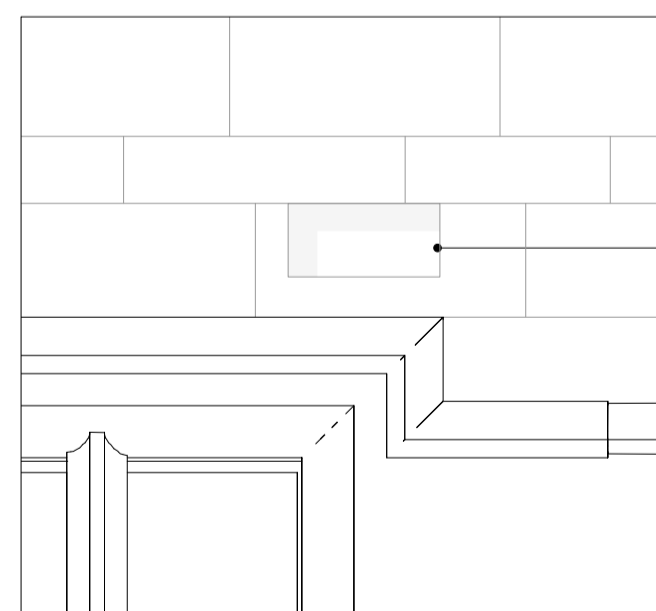
**General notes**

All windows to be refurbished - refer to 2313-PD-5100- Window Schedule



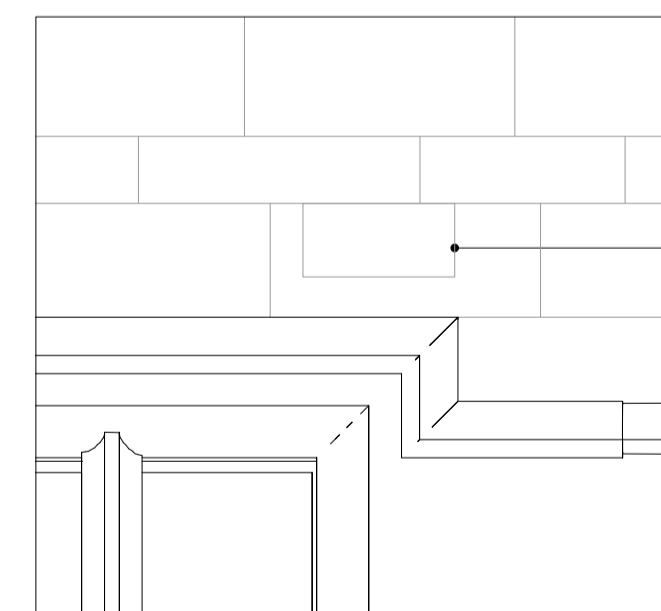
1. Existing condition

Blown face



2. Affected stonework removed

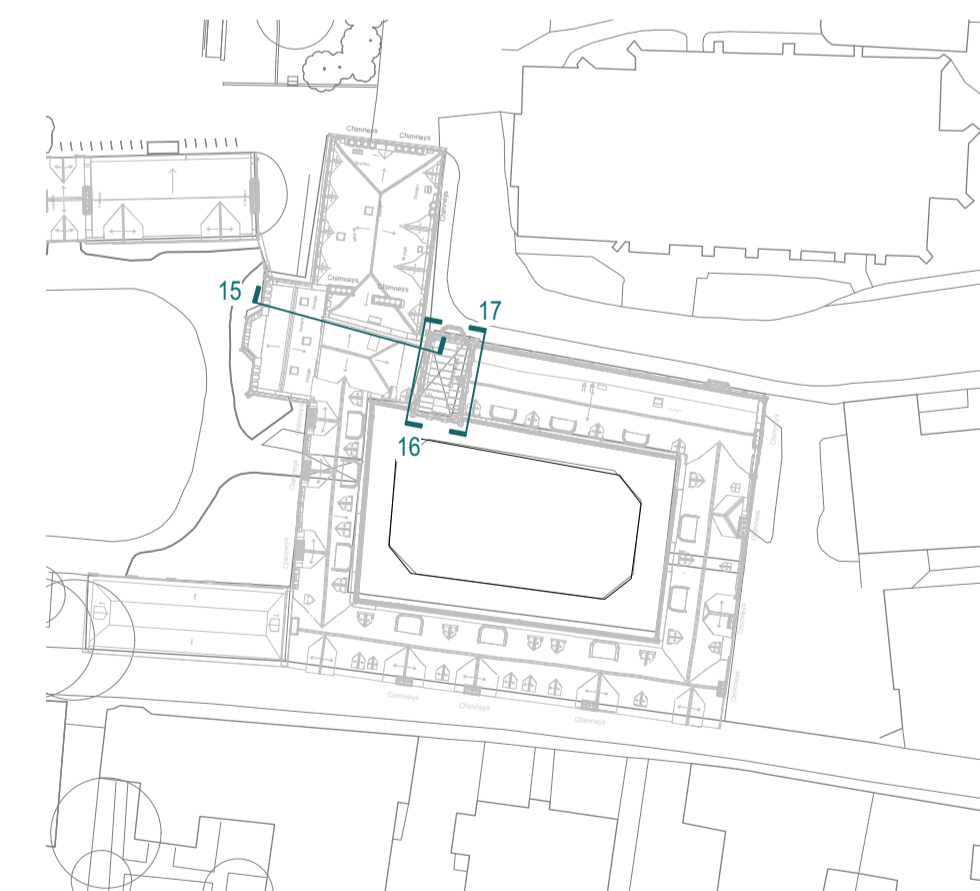
Rectangle of stonework around the affected area removed. Minimum area of stonework to be removed, regardless of existing joints



3. Proposed condition

Area removed replaced with matching stone

**Detail 01**  
Typical repair approach for blown faces  
1:20 @ A1



**Key plan**  
(NTS)



Rev	Date	Amendment
--	15.03.24	Issued for Planning

<b>WALTERS &amp; COHEN ARCHITECTS</b>		2 Wilkin Street London NW5 3NL		Telephone 020 7428 9751 mail@waltersandcohen.com	
<b>Pembroke College Rokos and Old Quad</b>			<b>External repairs - Elevations 15-17</b>		
Checked by TL	Scale 1:100@A1	Date Drawn 28.11.23	Job No. 2313	Drawing No. PD-1959	Revision -
© This drawing is copyright. Check dimensions on site					

**PLANNING**

Notes