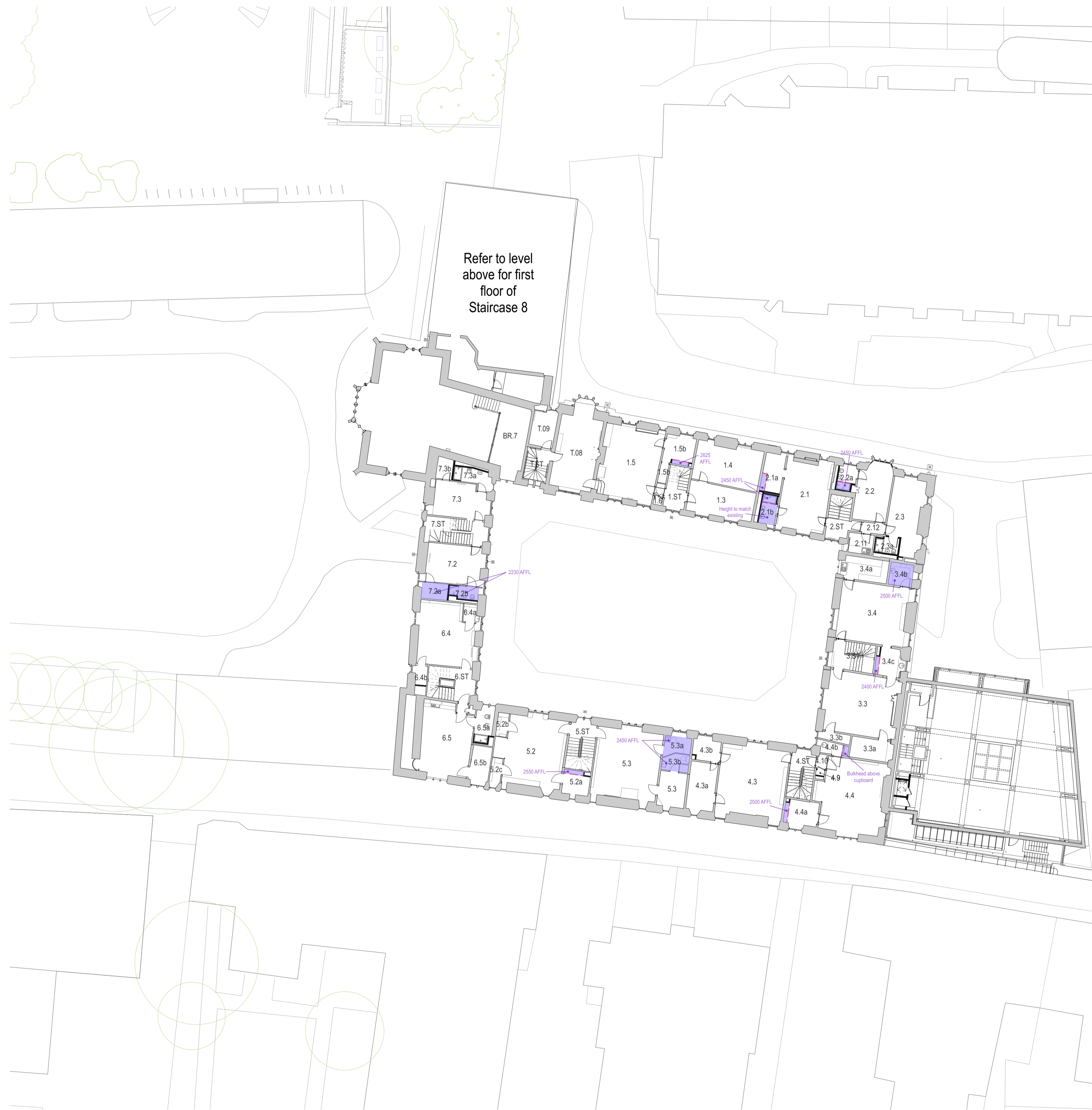


Old Quad Staircase 1-7 and Tower

| Room Ref. | Room Name |
|-----------|-----------------------------------|
| 1.3 | HR Officer's Office |
| 1.4 | HR Manager's Office |
| 1.5 | Accounts Office |
| 1.5a | Head Accountant's Office |
| 1.5b | Store |
| 1.6 | Scouts' Cleaning Store |
| 1.ST | Stair |
| 2.1 | Guest Bedroom |
| 2.1a | Guest Bedroom - Kitchenette |
| 2.1b | Guest Bedroom - Bathroom |
| 2.2 | Fellow's Office / General Purpose |
| 2.2a | Fellow's Office - Bathroom |
| 2.3 | Fellow's Office |
| 2.3a | Fellow's Office - Bathroom |
| 2.11 | Kitchenette |
| 2.12 | Lobby |
| 2.ST | Stair |
| 3.3 | Middle Common Room (MCR) |
| 3.3a | MCR Store |
| 3.3b | MCR Store |
| 3.4 | Middle Common Room (MCR) |
| 3.4a | MCR Bar |
| 3.4b | MCR WC |
| 3.4c | MCR Kitchenette |
| 3.ST | Stair |
| 4.3 | Shared Office / research centre |
| 4.3a | Shared Office - Ancillary |
| 4.3b | Shared Office - Ancillary |
| 4.4 | Fellow's Office |
| 4.4a | Fellow's Office - Ancillary |
| 4.4b | Fellow's Office - Store |
| 4.9 | Scouts' Cleaning Store |
| 4.10 | Lobby |
| 4.ST | Stair |
| 5.2 | Fellow's Office |
| 5.2a | Fellow's Office - Store |
| 5.2b | Fellow's Office - Store |
| 5.2c | Fellow's Office - Store |
| 5.3 | Fellow's Office - Ancillary |
| 5.3 | Fellow's Office |
| 5.3a | Fellow's Office - Kitchenette |
| 5.3b | Fellow's Office - Bathroom |
| 5.ST | Stair |
| 6.4 | Fellow's Office |
| 6.4a | Fellow's Office - Store |
| 6.4b | Fellow's Office - Store |
| 6.5 | Fellow's Office |
| 6.5a | Fellow's Office - Bathroom |
| 6.5b | Fellow's Office - Ancillary |
| 6.ST | Stair |
| 7.2 | Fellow's Office |
| 7.2a | Fellow's Office - Kitchenette |
| 7.2b | Fellow's Office - Bathroom |
| 7.3 | Fellow's Office |
| 7.3a | Fellow's Office - Bathroom |
| 7.3b | Fellow's Office - Kitchenette |
| 7.ST | Stair |
| BR.7 | Senior Common Room Mezzanine |
| T.08 | Bursar's Office |
| T.09 | Non-academic office |
| T.ST | Stair |



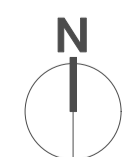
Key - existing and proposed

- Existing fabric
- Proposals

Key - Ceiling Finishes

- New ceilings**
New plain plasterboard suspended ceiling, skimmed and painted. Moisture resistant plasterboard in wet areas
- Denotes new ceiling is sloped. Refer to sections
- Denotes vertical bulkhead
- Proposed access hatch**
675 x 1000mm

Notes



Rev Date 15.03.24
Amendment Issued for Planning

WALTERS & COHEN ARCHITECTS

Pembroke College - Old Quad

2 Wilkin Street London NW5 3NL
Telephone 020 7428 9751
mail@waltersandcohen.com

Reflected Ceiling Plan - First Floor

| | | | | | |
|---------------|----------------|---------------------|--------------|---------------------|------------|
| Checked by TL | Scale 1:200@A1 | Date Drawn 05.02.24 | Job No. 2313 | Drawing No. PD-1302 | Revision - |
|---------------|----------------|---------------------|--------------|---------------------|------------|

© This drawing is copyright. Check dimensions on site

PLANNING