

FL3X2-SDP-A-10-04 - New Pole
 O/S 8, CYPRESS DRIVE, FLEET, GU51 3HE
 Pole_Type:9M WOOD
 Surface Type:Tarmac
 Coordinates:
 X=482520.03
 Y=154251.07
 Footpath width:1.5m
 Verge width: m

Any modifications to the drawing or use of alternative items to those specified must be agreed with Toob's local planning department

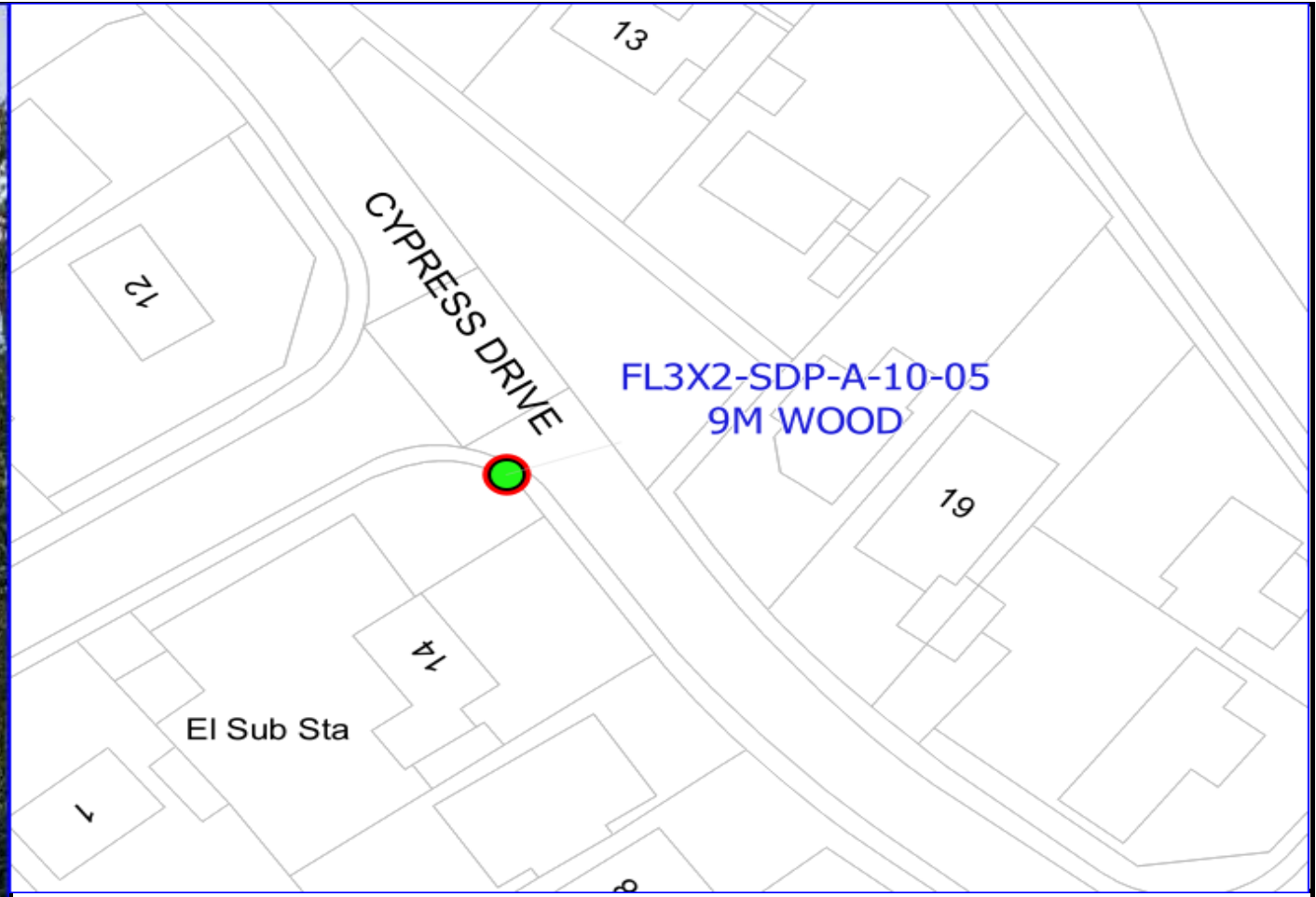
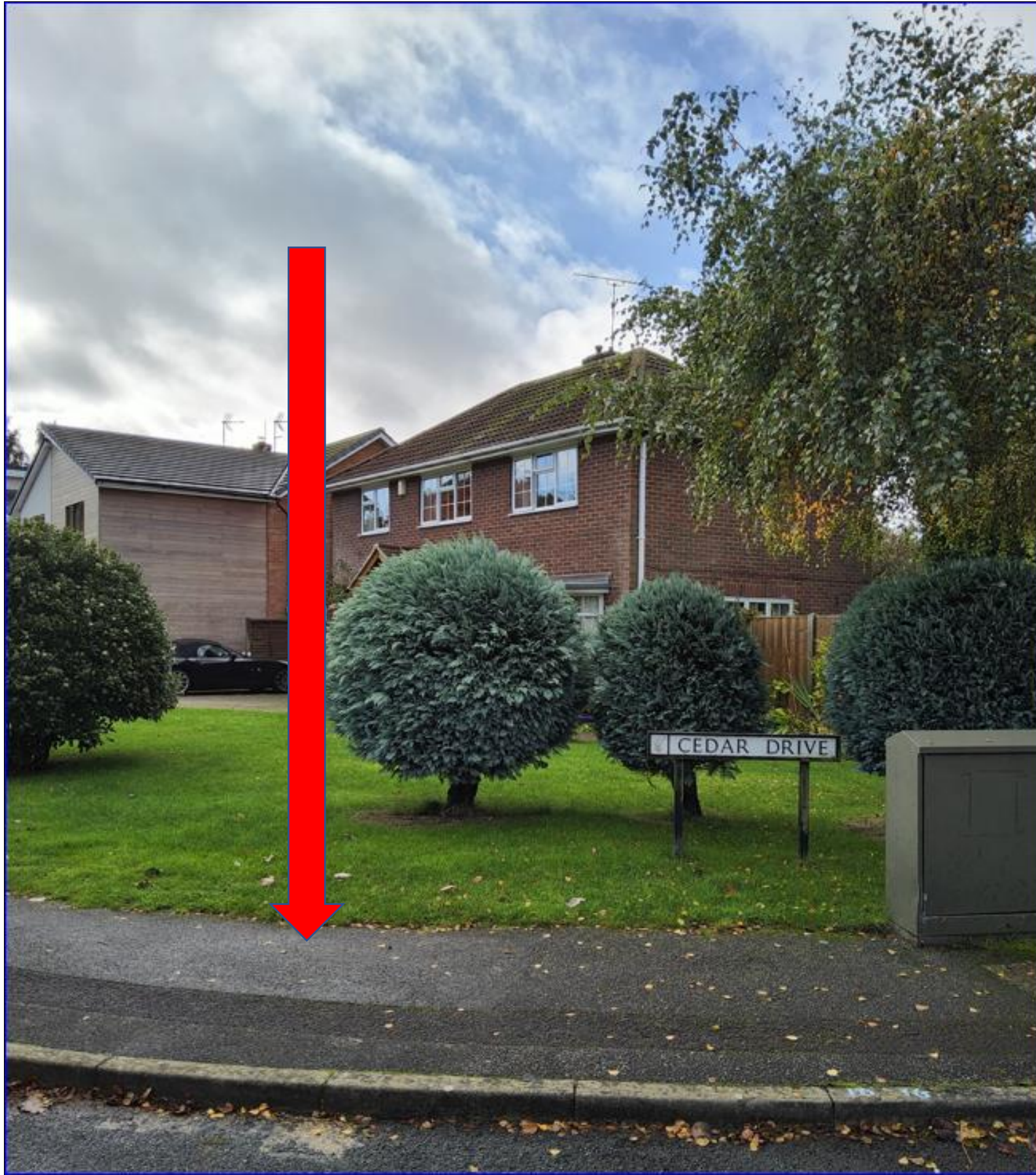
Reproduction from the Ordnance Survey map by Toob with permission of Ordnance Survey on behalf of Her Majesty's Stationary Office © Crown Copyright Toob

FL3X2-SDP-A-10-04

Originator	Cyient
Contact Number	0752598439
Issue Date	November 22, 2023
Office	Southampton
Line Manager	Di Godsave



Internal Use Only



FL3X2-SDP-A-10-05 - New Pole
S/O 14, CYPRESS DRIVE, FLEET, GU51 3HF
 Pole_Type:9M WOOD
 Surface Type:Tarmac
 Coordinates:
 X=482555.07
 Y=154202.25
 Footpath width:1.4m
 Verge width: m

Any modifications to the drawing or use of alternative items to those specified must be agreed with Toob's local planning department

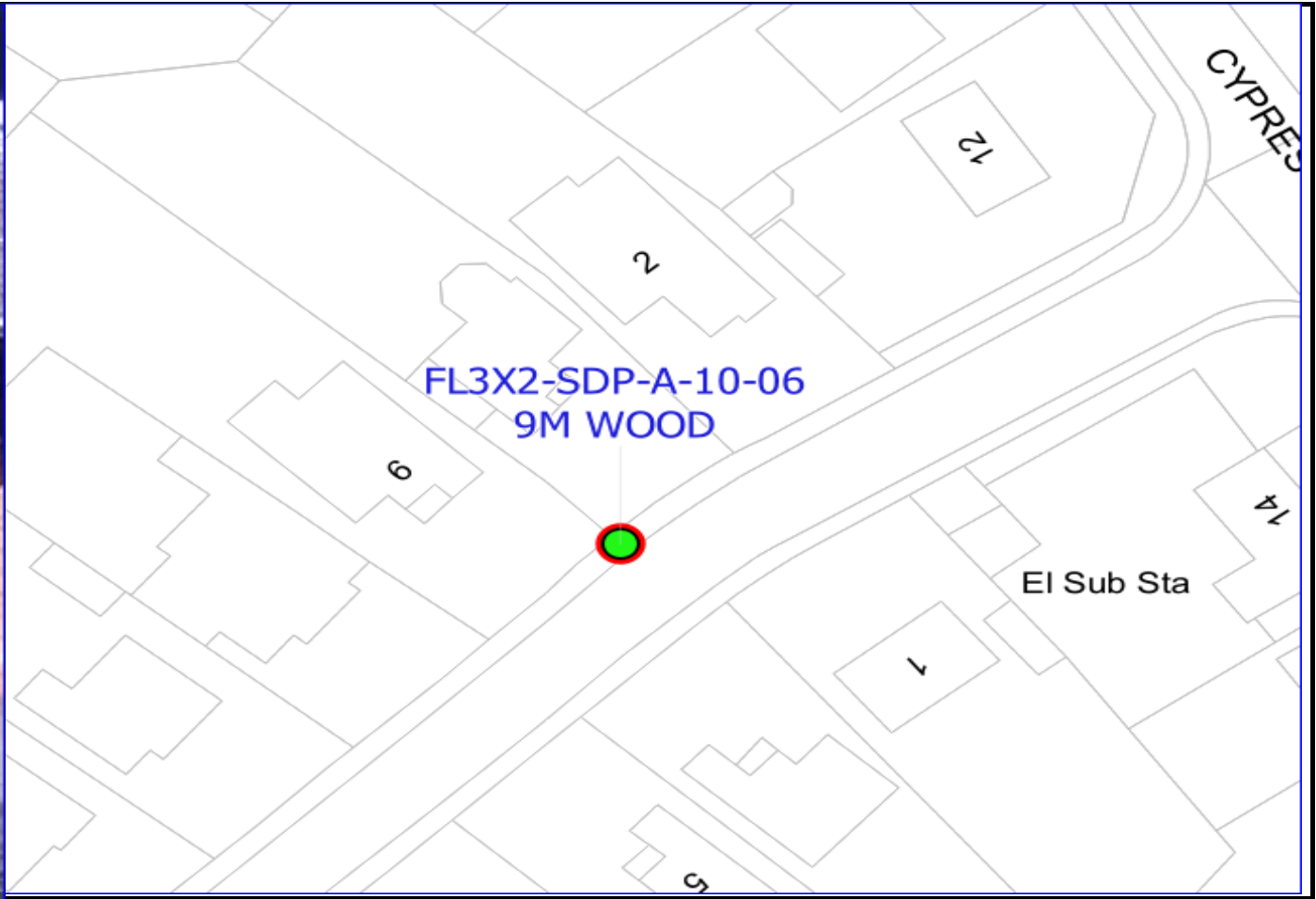
Reproduction from the Ordnance Survey map by Toob with permission of Ordnance Survey on behalf of Her Majesty's Stationary Office © Crown Copyright Toob

FL3X2-SDP-A-10-05

Originator	Cyient
Contact Number	0752598439
Issue Date	November 22, 2023
Office	Southampton
Line Manager	Di Godsave



Internal Use Only



FL3X2-SDP-A-10-06 - New Pole
O/S 6, CEDAR DRIVE, FLEET, GU51 3HD
 Pole_Type:9M WOOD
 Surface Type:Tarmac
 Coordinates:
 X=482505.07
 Y=154184.52
 Footpath width:1.6m
 Verge width: m

Any modifications to the drawing or use of alternative items to those specified must be agreed with Toob's local planning department

Reproduction from the Ordnance Survey map by Toob with permission of Ordnance Survey on behalf of Her Majesty's Stationary Office © Crown Copyright Toob

FL3X2-SDP-A-10-06

Originator	Cyient
Contact Number	0752598439
Issue Date	November 22, 2023
Office	Southampton
Line Manager	Di Godsave



Internal Use Only



FL3X2-SDP-A-10-07 - New Pole
 O/S 11, CEDAR DRIVE, FLEET, GU51 3HD
 Pole_Type:9M WOOD
 Surface Type:Tarmac
 Coordinates:
 X=482468.89
 Y=154138.36
 Footpath width:1.6m
 Verge width: m

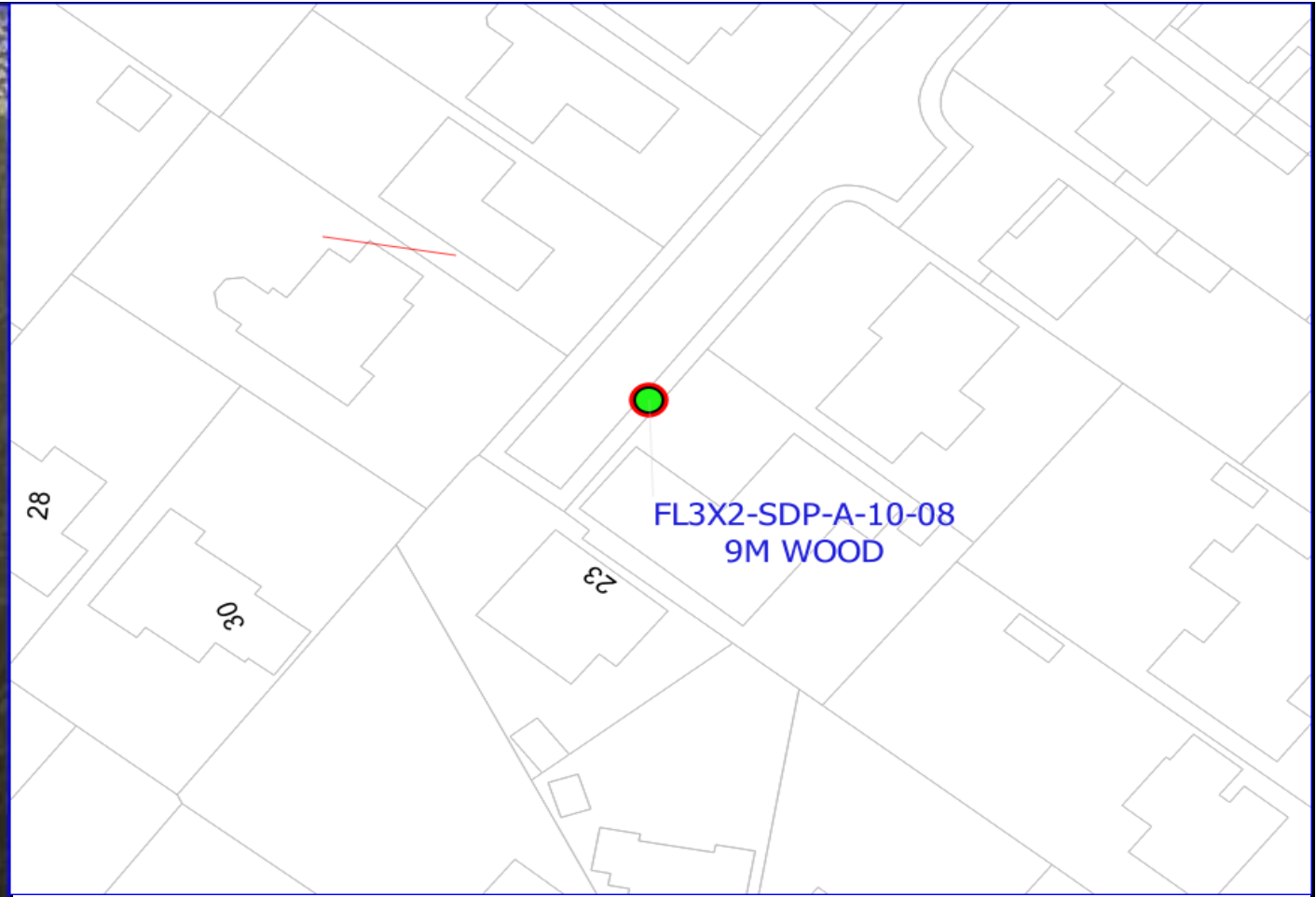
Any modifications to the drawing or use of alternative items to those specified must be agreed with Toob's local planning department

FL3X2-SDP-A-10-07

Originator	Cyient
Contact Number	0752598439
Issue Date	November 22, 2023
Office	Southampton
Line Manager	Di Godsave



Internal Use Only



FL3X2-SDP-A-10-08 - New Pole
O/S 21, CEDAR DRIVE, FLEET, GU51 3HD
 Pole_Type:9M WOOD
 Surface Type:Tarmac
 Coordinates:
 X=482425.36
 Y=154084.31
 Footpath width:1.6m
 Verge width: m

Any modifications to the drawing or use of alternative items to those specified must be agreed with Toob's local planning department

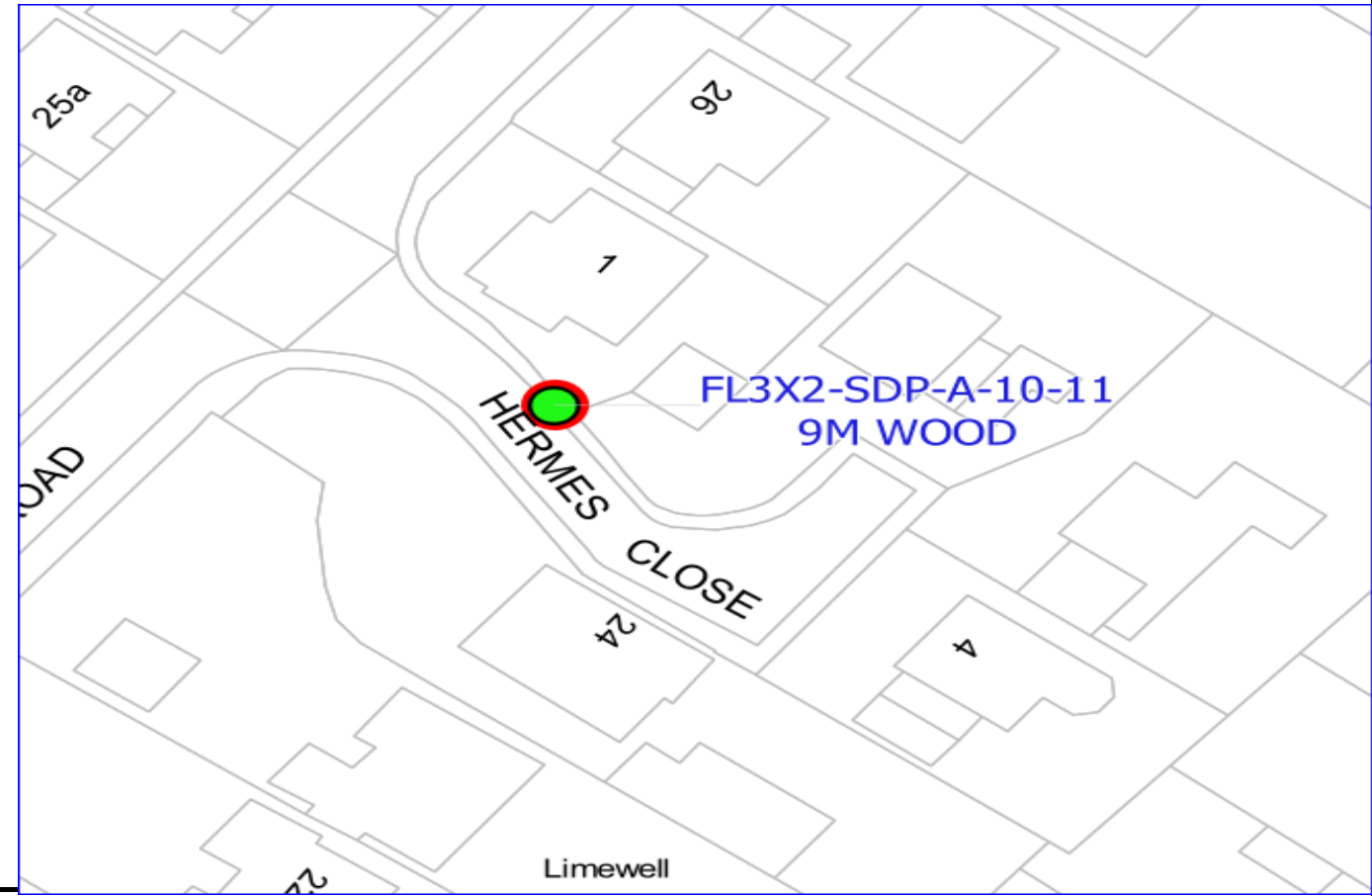
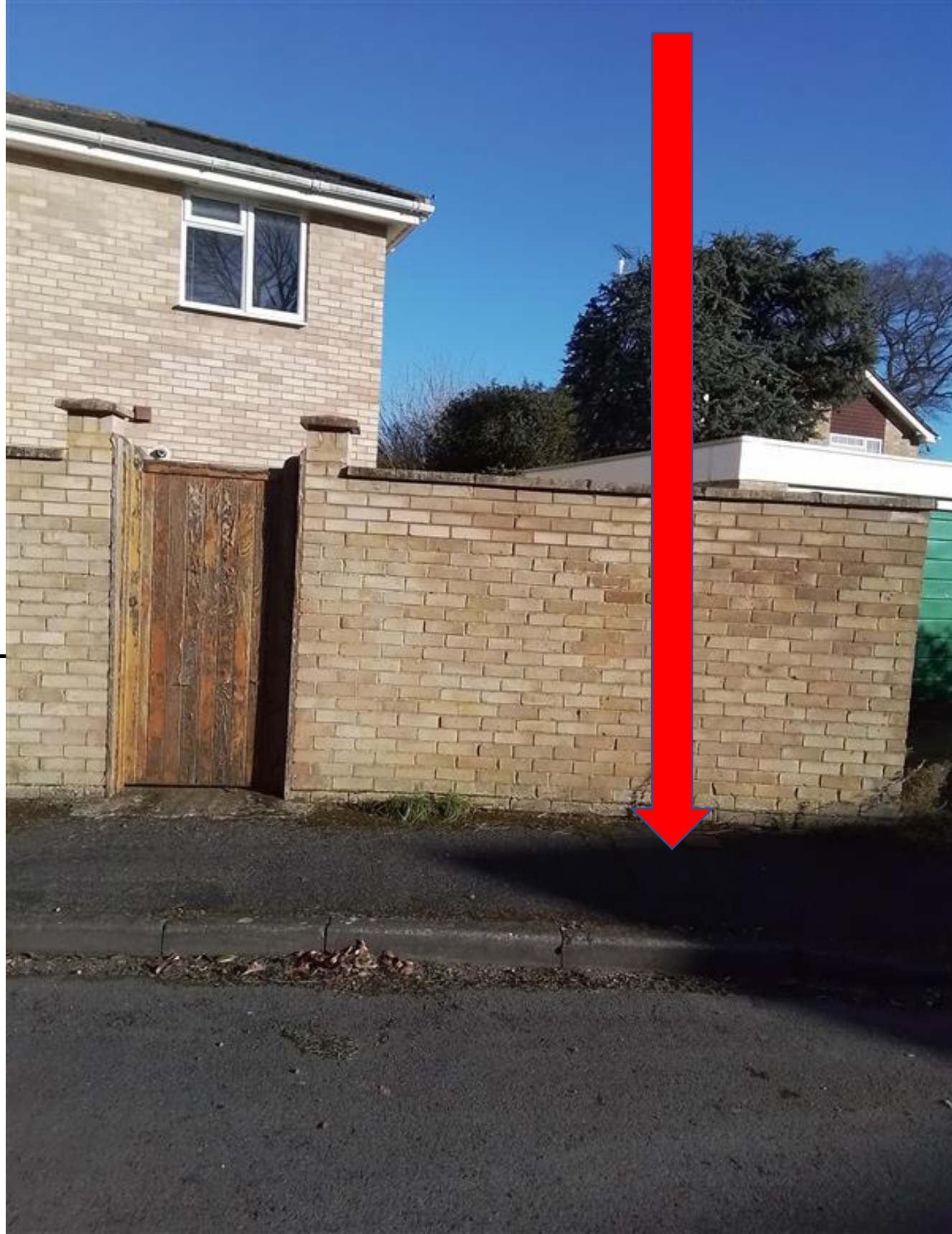
FL3X2-SDP-A-10-08

Reproduction from the Ordnance Survey map by Toob with permission of Ordnance Survey on behalf of Her Majesty's Stationary Office © Crown Copyright Toob

Originator	Cyient
Contact Number	0752598439
Issue Date	November 22, 2023
Office	Southampton
Line Manager	Di Godsave



Internal Use Only



FL3X2-SDP-A-10-11 - New Pole
 S/O 1, HERMES CLOSE, FLEET, GU51 3ET
 Pole_Type:9M WOOD
 Surface Type:Tarmac
 Coordinates:
 X=482402.6
 Y=154202.1
 Footpath width:1.1m
 Verge width: m

Any modifications to the drawing or use of alternative items to those specified must be agreed with Toob's local planning department

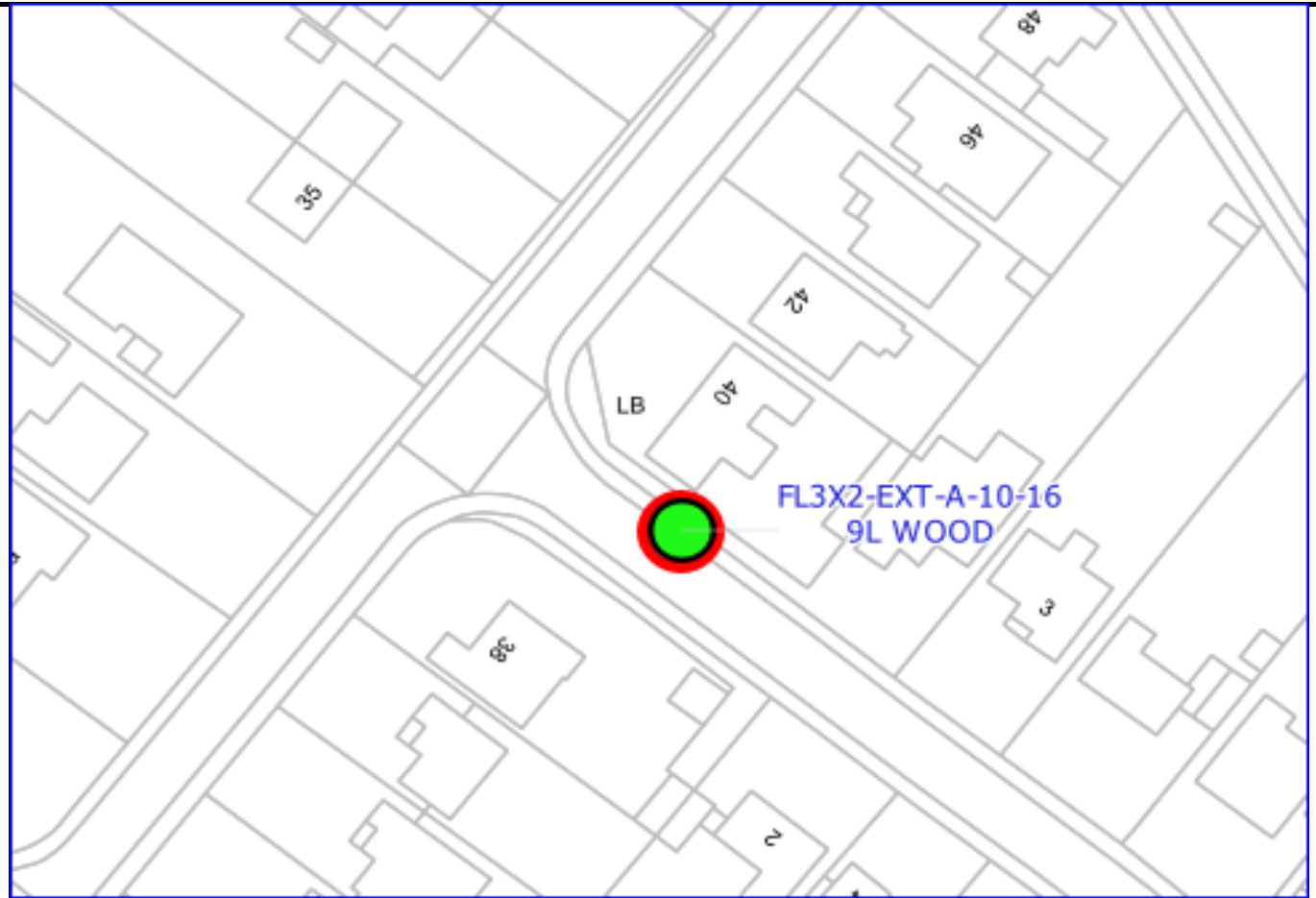
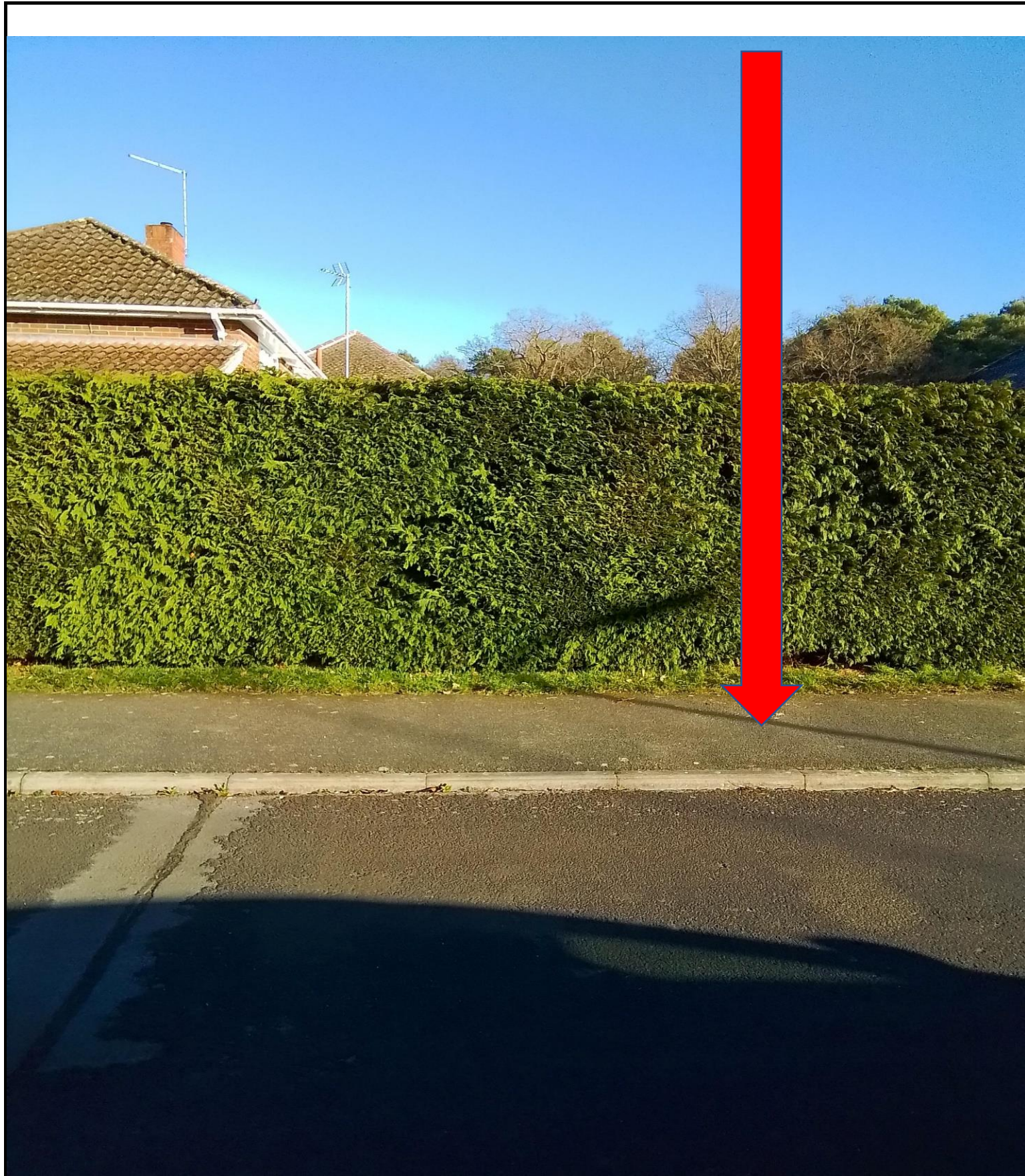
Reproduction from the Ordnance Survey map by Toob with permission of Ordnance Survey on behalf of Her Majesty's Stationary Office © Crown Copyright Toob

FL3X2-SDP-A-10-11

Originator	Cyient
Contact Number	0752598439
Issue Date	November 22, 2023
Office	Southampton
Line Manager	Di Godsave



Internal Use Only



FL3X2-EXT-A-10-16 - New Pole
 S/O 40, GUILDFORD ROAD, FLEET, GU51 3EY
 Pole_Type:9L WOOD
 Surface Type:Tarmac
 Coordinates:
 X=482477.7
 Y=154293.4
 Footpath width:1.6m
 Verge width: m

Any modifications to the drawing or use of alternative items to those specified must be agreed with Toob's local planning department

Reproduction from the Ordnance Survey map by Toob with permission of Ordnance Survey on behalf of Her Majesty's Stationary Office © Crown Copyright Toob

FL3X2-EXT-A-10-16

Originator	Cyient
Contact Number	0752598439
Issue Date	November 22, 2023
Office	Southampton
Line Manager	Di Godsave



Internal Use Only