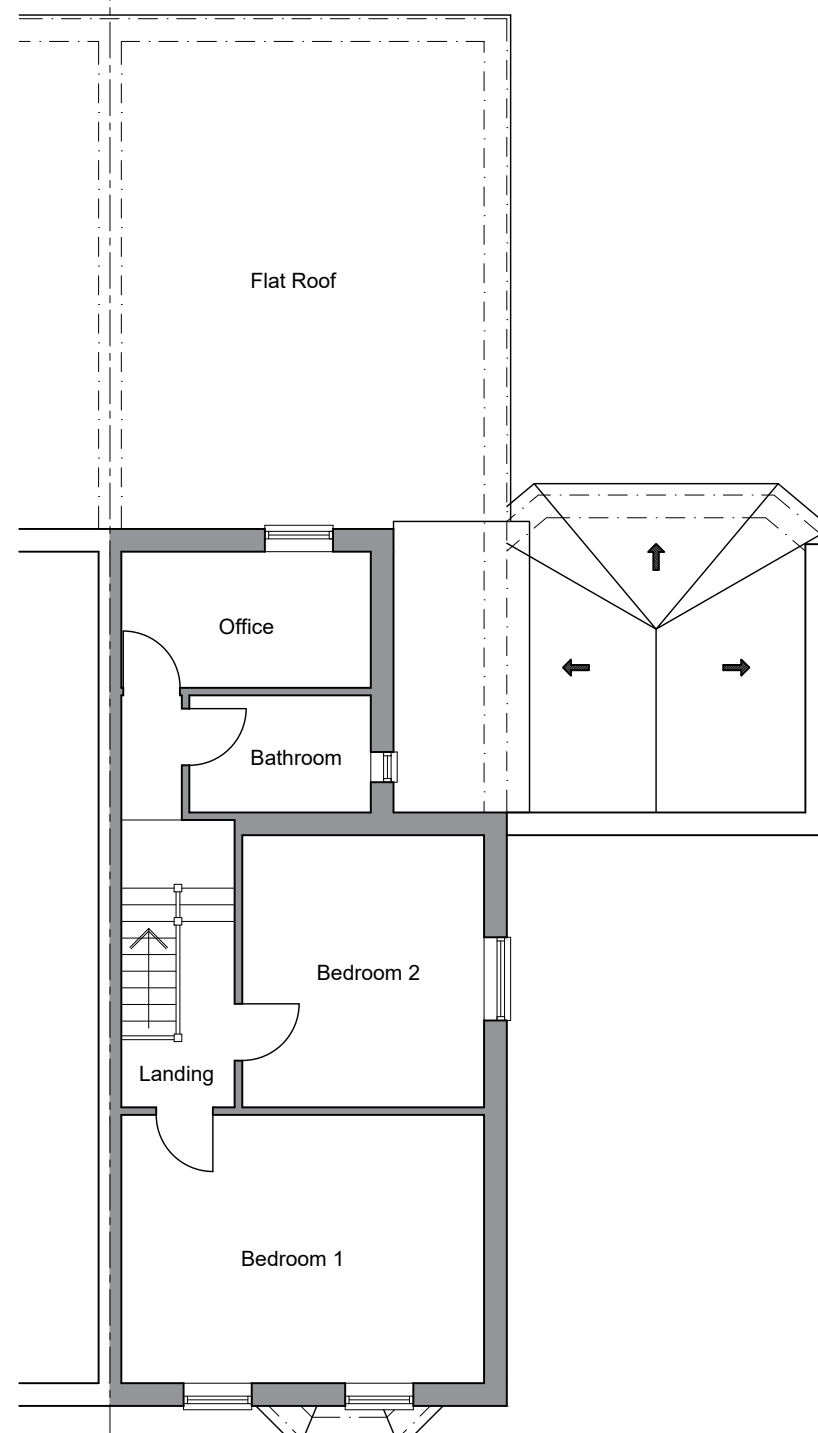
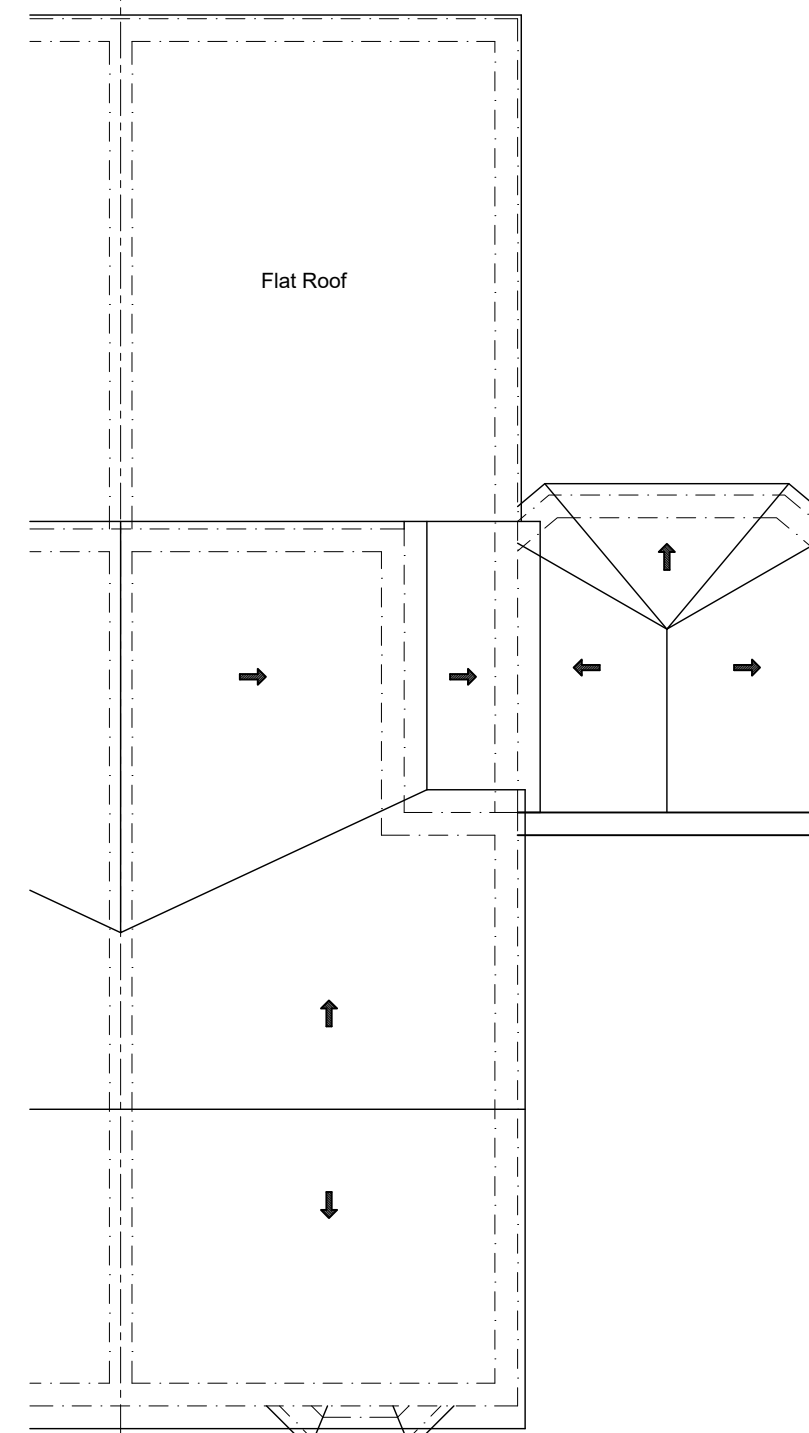


GROUND FLOOR PLAN  
102.0 sqm



FIRST FLOOR PLAN  
47.1 sqm



ROOF PLAN  
149.1 sqm

REV	DATE	DESCRIPTION	INITIAL	CHECKED
<b>PLANNING</b>				



harding rose architects

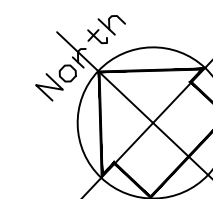
CLIENT  
PROJECT Woodstock Villas, Frimley Road, Ash Vale, Guildford, GU21 5PP

TITLE Existing Plans for No.2 Woodstock Villas

SCALE 1:200 @A2  
DRAWN HB

DATE 28.03.24  
PROJECT NO. 23.1114

P.02



© This drawing is copyright.  
It is sent to you in confidence and must not be reproduced or disclosed to third parties without our prior permission.  
Do not scale from this drawing, other than for Local Authority Planning purposes.  
This drawing is to be read in conjunction with all relevant consultants, specialist manufacturers drawings and specifications.  
Any discrepancies in dimensions or details on or between these drawings should be drawn to our attention.  
All dimensions are in millimetres unless noted otherwise.