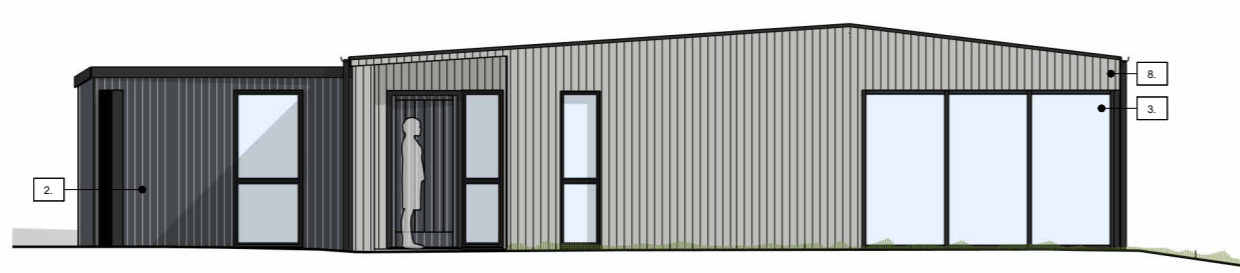
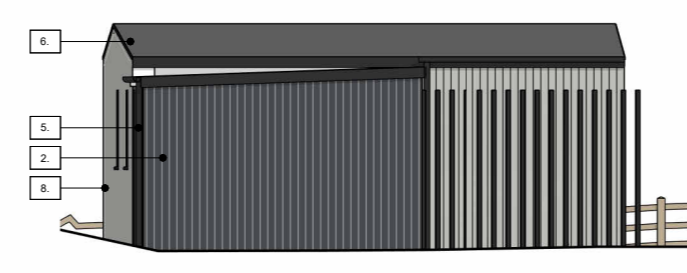




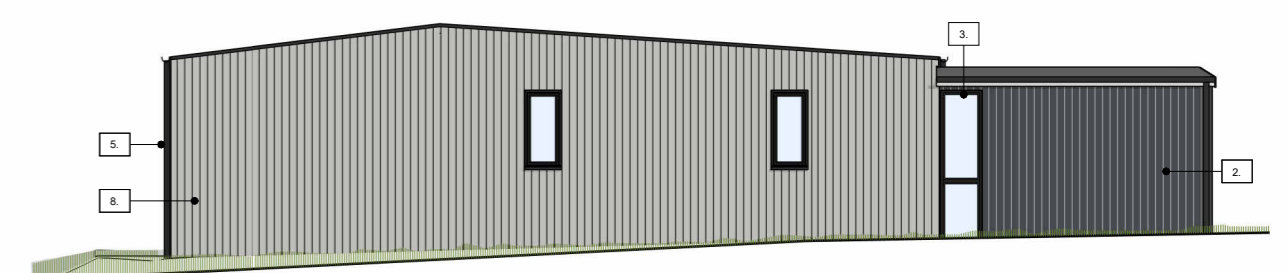
Unit A - North-East Elev
1:100



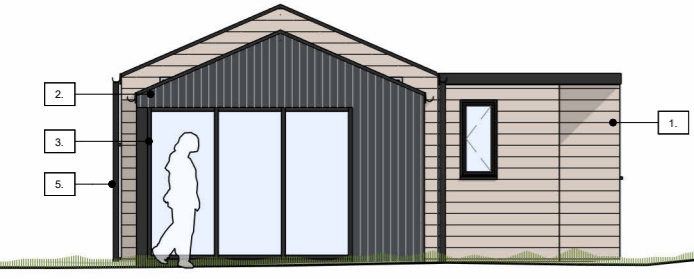
Unit A - South-East Elev
1:100



Unit A - South-West Elev
1:100



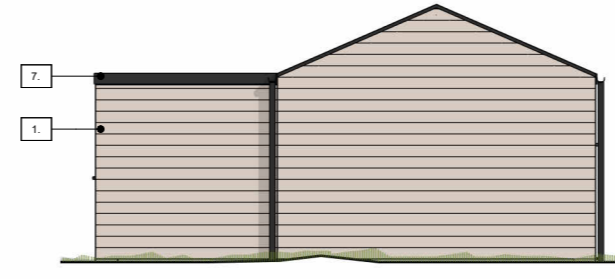
Unit A - North-West Elev
1:100



Unit B - North-East Elev
1:100



Unit B - South-East Elev
1:100



Unit B - South-West Elev
1:100



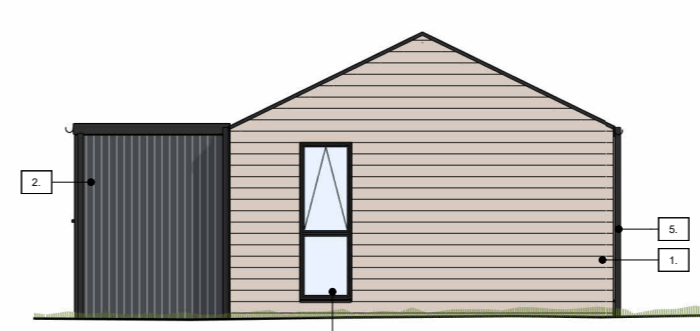
Unit B - North-West Elev
1:100



Unit C - North-East Elev
1:100



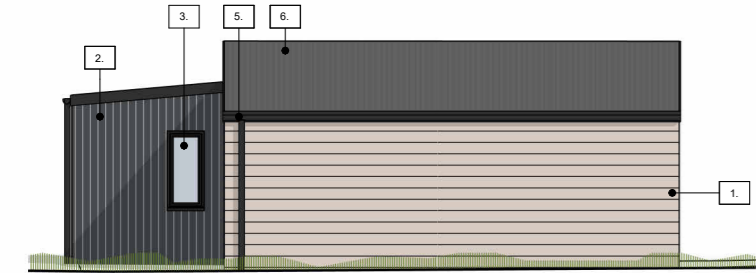
Unit C - South-East Elev
1:100



Unit C - South-West Elev
1:100



Unit C - North-West Elev
1:100



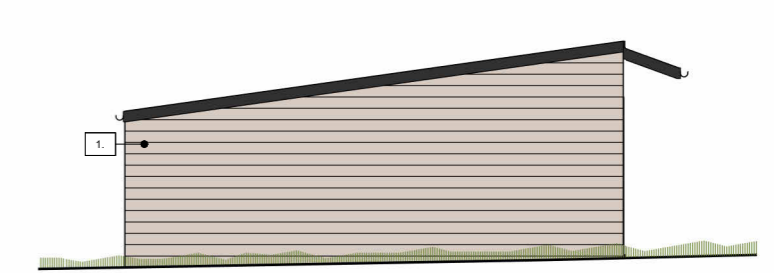
Unit D - North-East Elev
1:100



Unit D - South-East Elev
1:100



Unit D - South-West Elev
1:100



Unit D - North-West Elev
1:100

- Elevations Materials Key**
1. Natural horizontal timber cladding
 2. Dark stained vertical timber cladding
 3. Black framed aluminium windows and doors
 4. Solid timber front doors
 5. Black rainwater goods
 6. Corrugated insulated roof sheeting
 7. Single ply flat roof sheeting
 8. Natural vertical timber cladding

Accommodation Schedule

GFA(m ²)	EXISTING	RETAINED	DEMO	NEW	PROPOSED
Unit A	79.5	79.5	0	0	79.5
Unit B	32.9	24.4	8.5	11.8	36.2
Unit C	71.9	55.6	16.3	15.2	70.8
Unit D	98.1	45.9	52.2	0	45.9
Total	282.4	205.4	77	27	232.4

Site Plan Key

- Amenity garden
- Grassland
- Hedgerow
- Crushed stone driveway
- Permeable paving
- New planting
- Outline of demolished building elements
- Extension elements



P01 18.02.24 JK DRAFT Planning Issue
rev | date | issued | description

REFORM
ARCHITECTURE AND INTERIOR DESIGN LTD
T 07802 218398 A Studio 6 41-45 St Mary's Gate Nottingham, NG1 1PU
www.reform-property.com
info@reform-property.com

A1

Original Sheet Size

STATUS
Planning

PROJECT
Holiday lets

314 Spring Lane,
Lambley,
Nottinghamshire,
NG3 5RQ

CLIENT
Mr and Mrs Hayer

DRAWING TITLE
Proposed floor plans and elevations

SCALE: 1:100 DATE: 14/04/23 DRAWN: RH CHK: JK

DRAWING NUMBER: 2314 - S02 - 110 REVISION: P01

© COPYRIGHT