

General notes/Notas generales

Do not scale from this drawing.
 Errors to be reported immediately to the Architect.
 To be read in conjunction with all relevant consultants drawings and reports.
 All existing site, tree and building information has been compiled from different sources.
 All dimensions to be checked on site.

© Faber Architecture Ltd 2024

Revisions/Revisiones

Rev	Date	Description	Drawn

Rev	Date	Description	Drawn

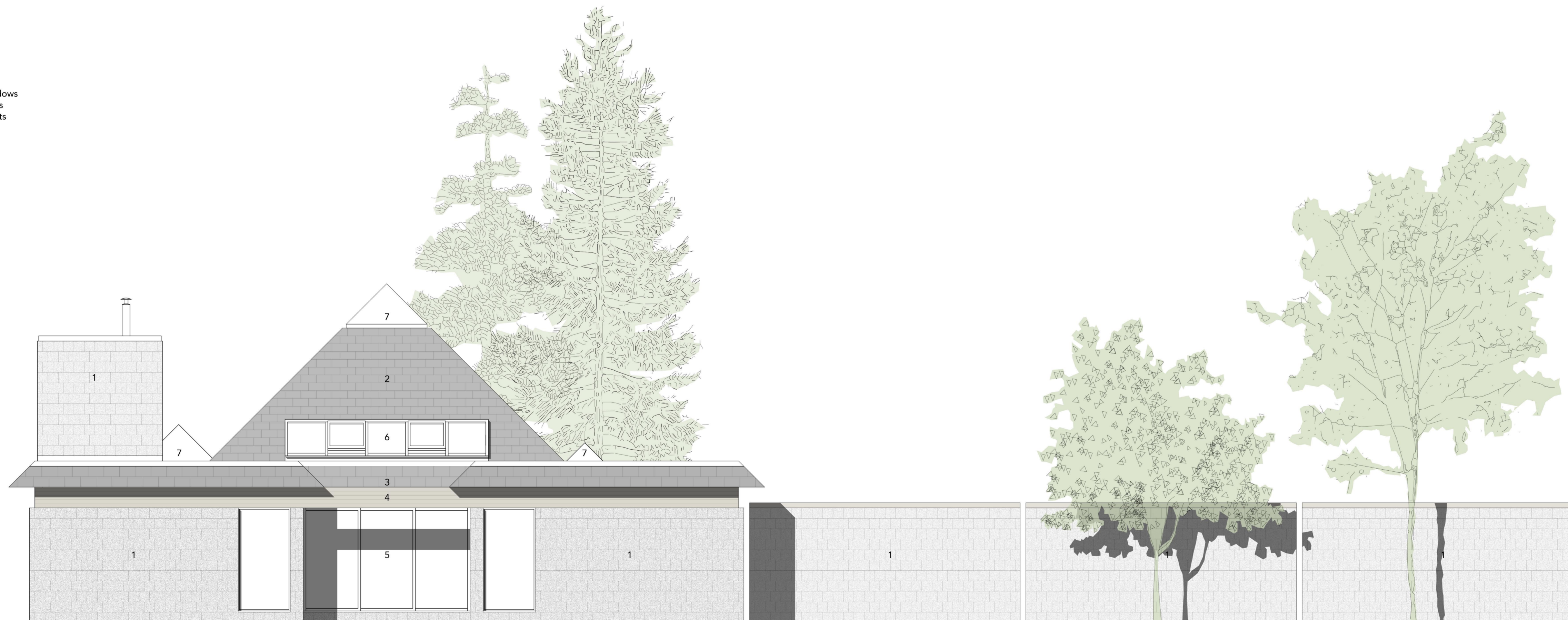
Key plan/Plano clave



South Elevation

Materials Legend

- 1 Concrete facing blocks
- 2 Slate roof tiles
- 3 Bitumen roof shingles
- 4 Timber cladding
- 5 Aluminium framed windows
- 6 Timber framed windows
- 7 Polycarbonate roof lights
- 8 Timber doors



West Elevation



RIBA Chartered Architects

www.faberarchitecture.com
 info@faberarchitecture.com
 +44 (0)74740 27332

United Kingdom
 España

Project/Proyecto

Courtlands
 Kirkby-On-Bain
 Lincolnshire

Client/Cliente

Project No/Proyecto No: **2097** Drawing No/Dibujo No: **PL005**

Drawing title/Título del dibujo: **Elevations - Existing**

Scale/Escala: **1:50 @ A1** Revision/Revisión: **00**

Date/Fecha: **08.03.2024** Purpose/Propósito: **Planning**

Drawn/Dibujado: **GJ / BDJB**