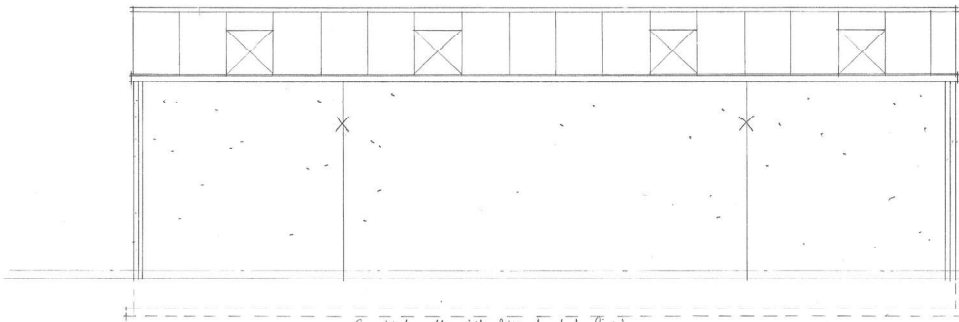


No external changes are proposed



REAR ELEVATION

Cone block walls with white dry-dash finish

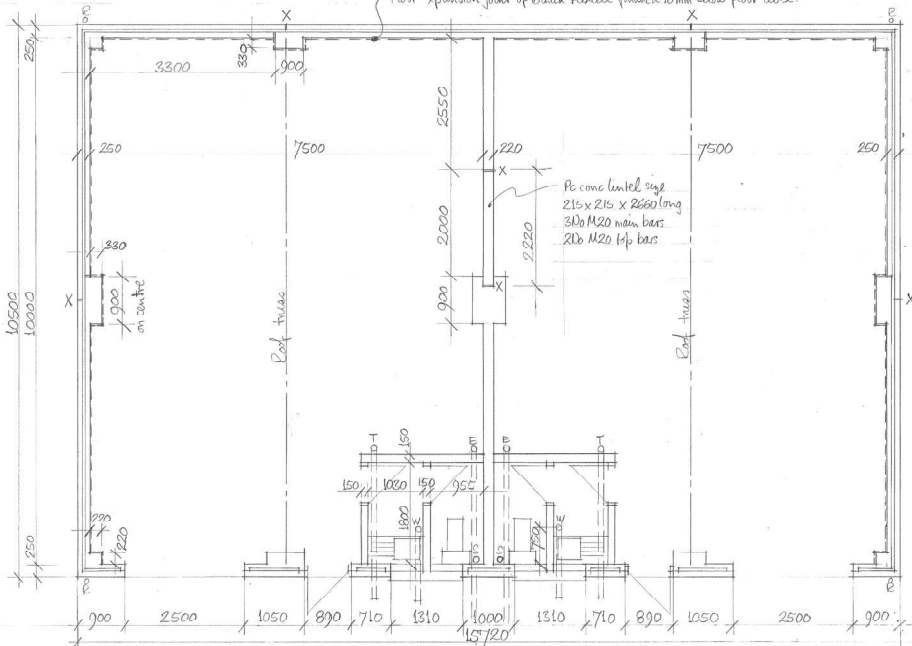
HA Robertsons Tripart V roof panels colour Mocha R213 and Truilight II double-skin factory-sealed rooflights
150 PVC gutter on fascia brackets at 600 c/c, 100 dia PVC Knap?



FRONT ELEVATION

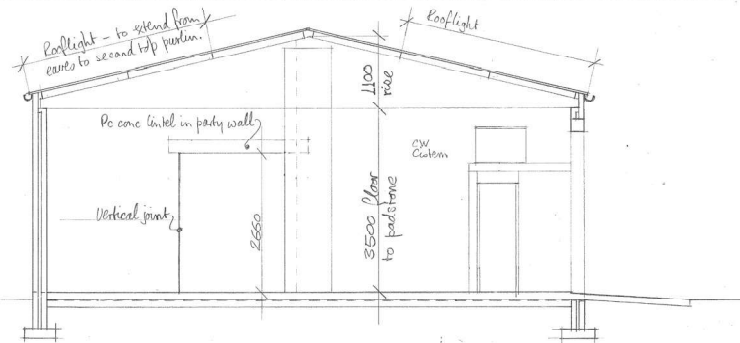
Timber windows double-glazed with top-hung opening lights.

Floor expansion joint of Black Pexcell finished 10mm below floor level.



'X' denotes expansion joint.

GROUND FLOOR PLAN UNITS 1 and 2 (UNITS 3 and 4 are the same).

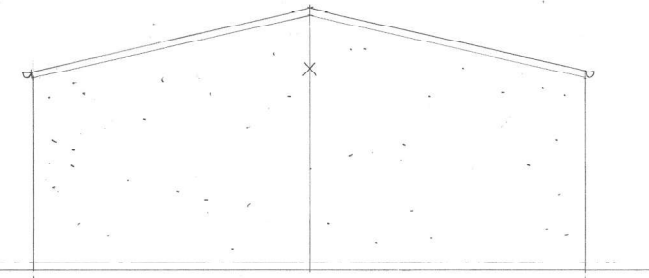


CROSS SECTION

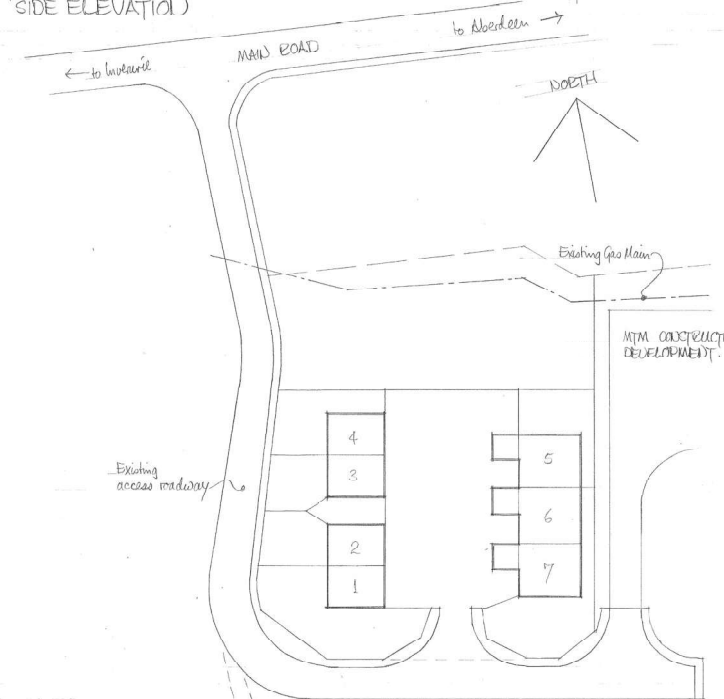
NOTES

- T = duct for telephone cable
- W = duct for water supply pipe
- E = duct for electrical supply cable

Duct to be 110 dia UPVC with large radius bend to floor level. Duct for electricity to extend outwith building as far as tamed roadway.



SIDE ELEVATION



BLOCK PLAN 1:500 410 units @ 75m² and 310 units @ 135m²

A Aug 84 Services ducts added
REF DATE Plans enlarged.

REVISIONS
MFM CONSTRUCTION DEVELOPMENT
DIRECTOR OF ARCHITECTURAL SERVICES

GRAMPIAN REGIONAL COUNCIL
ASHGROVE ROAD WEST
ABERDEEN AB9 2LU
TELEPHONE NO ABERDEEN 602222
BLACKBURN
ADVANCE FACTORIES
UNITS 1, 2, 3 and 4 (75m²)

DRAWN BY ARECENG
DATE MAY 84 SCALE 1:50
CONTRACT : DRAWING

3282.10 A