

KEY

SOFT LANDSCAPE

- Proposed Trees**
Refer to label for species and plant schedule for size, specification and additional information.
- Existing Trees (retained & protected)**
Indicative area shown for reference. Refer to Arborist report for accurate information. Refer to BS 5837.
- Removed Vegetation**
Indicative area shown for reference. Refer to Arborist report for accurate information. Refer to BS 5837.
- Proposed Shrubs areas**
Refer to drawing notes.
- Proposed Bulb planting**
Refer to plant schedule.
- Proposed Meadow/Long Grass**
Refer to plant schedule.
- Proposed Lawn**
Refer to plant schedule.
- Proposed Hedgerow**
Refer to plant schedule.
- Proposed Hedgerow Underplanting**
Refer to plant schedule and boundary plan.
- Planning Application Boundary**

1 This area of public open space acts as a green corridor from North to South through the site, as well as providing a visual link between the historic farm buildings and the parkland to the North. Natural play for children creates an informal environment to encourage exploration.

A meandering path with shrub and hedge planting provides a visual buffer between plots on either side of the space. Species have been selected for their wildlife benefits as well as their aesthetic appeal. These areas will be maintained to a maximum height of 1.5m.

Groups of tree planting with drifts of bulb planting will create early spring interest.

- Hedgerows:**
- Soak the roots before planting
 - Water weekly during first two growing seasons.
 - Monitor & water during hot periods.
 - Remove any weeds and large stones, dig the area over and incorporate some organic matter.
 - Avoid planting in waterlogged or frozen (too hard to get the spade in) soil.
 - Plant your whips in a staggered double row roughly half a metre apart.
 - Water well and give your new hedge a thick mulch. This will help to reduce any competition from weeds as the hedge gets going.
 - When pruning is required it should be carried out during the dormant season. Don't be afraid to cut back hard as this will encourage the hedge to thicken up.
- Trees:**
- All trees must be compliant with Table 1, p.21, BS 8545:2014
 - Water weekly during first two growing seasons.
 - Monitor & water during hot periods.
 - Once the tree can stand unsupported without bending or shifting in the ground, remove the stakes.
 - Stakes and ties should be checked regularly for chafing or other damage to the bark.
 - Remove guards as soon as they split and before they start to disintegrate.
 - Stakes and ties will be removed after no more than two growing seasons.
 - The specific aim for pruning will be to maintain good form and the characteristic form of the tree.
 - Remove dead, diseased and damaged branches.

When planting - dig a hole a little deeper than the plants root system and about twice as wide to give the hedgerows roots room to spread out. Center it in the hole at the same depth it was growing in the pot. Fill the hole around the shrub with soil. Firm the soil around the root ball with your hands making sure to establish good soil contact.

Shrubs:

- Soak the roots before planting
- Water weekly during first two growing seasons.
- Monitor & water during hot periods.
- When pruning is required it should be carried out during the dormant season. Light pruning will help maintain the shrubs size & shape especially if branches are falling onto pavement.
- Remove dead, diseased and damaged branches where appropriate.
- Ideally you should wait until the heat of summer has passed to plant any shrubs. Planting is best done between October and April.
- Avoid planting in waterlogged or frozen (too hard to get the spade in) soil.

When planting - dig a hole the same depth as the plant's pot and about twice as wide to give the shrub's roots room to spread out. Take the plant out of its pot, loosen the soil around the sides, and center it in the hole at the same depth it was growing in the pot. Fill the hole around the shrub with soil. Firm the soil around the root ball with your hands making sure to establish good soil contact.

Groups of tree planting with drifts of bulb planting will create early spring interest.

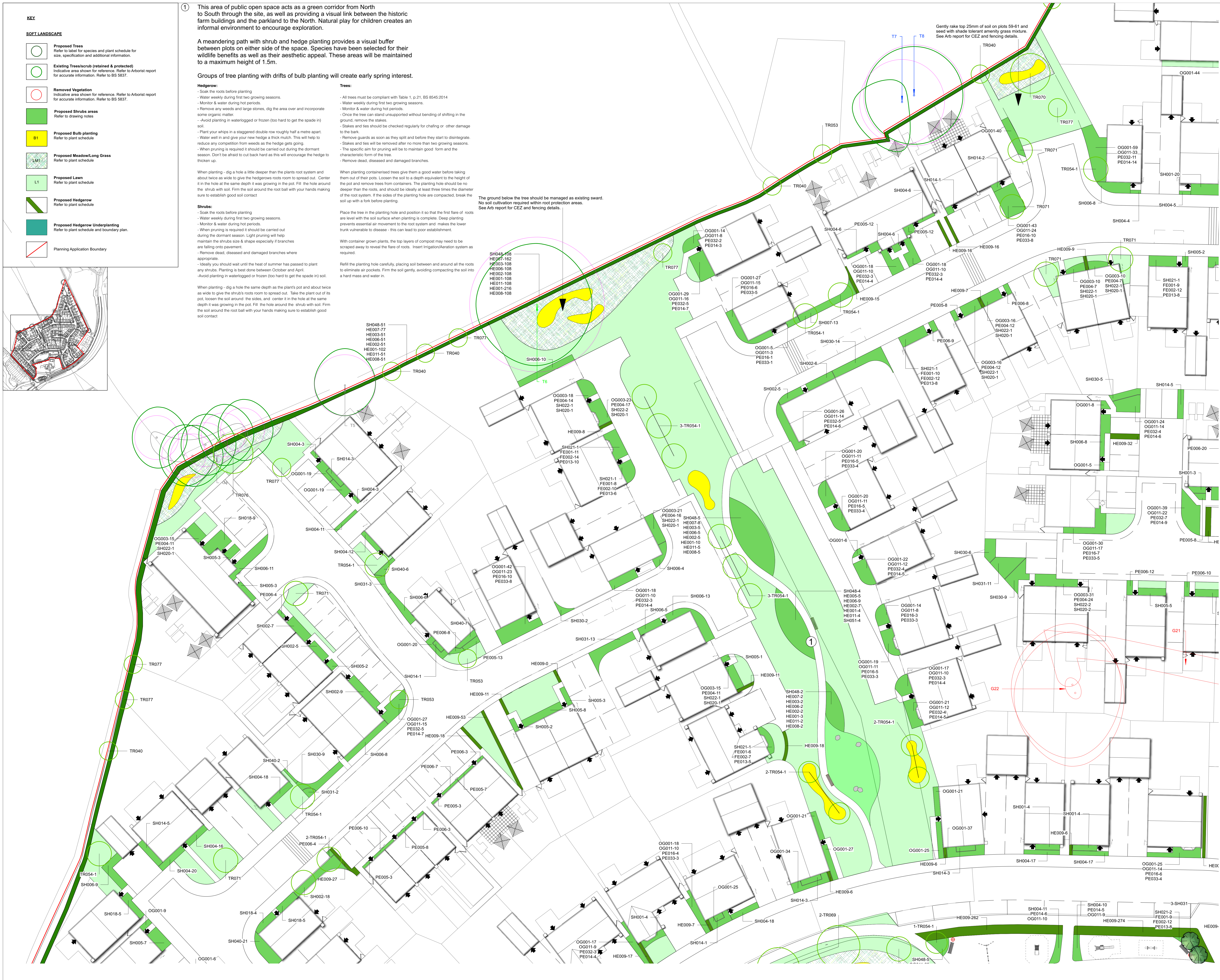
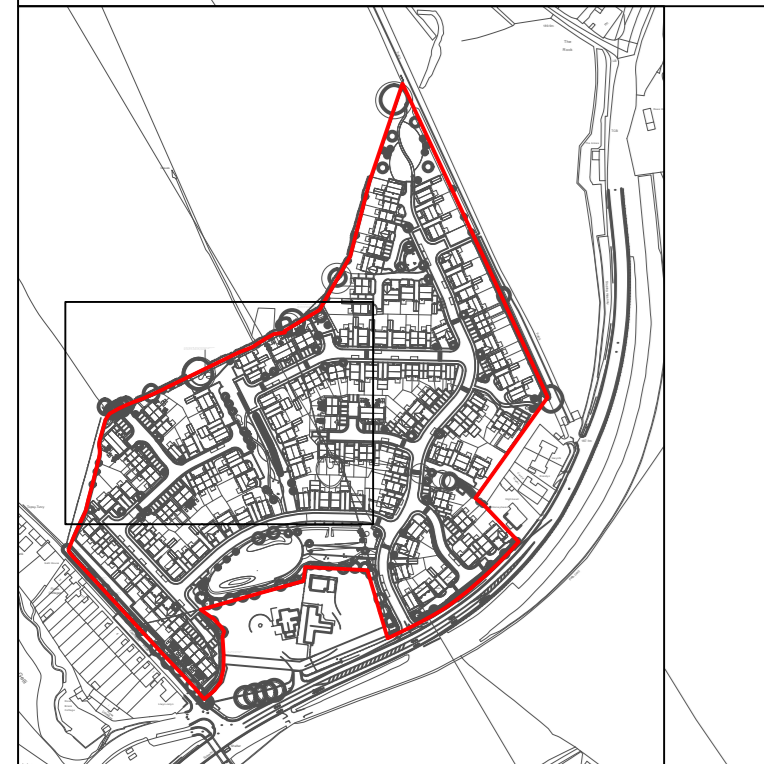
Hedgerows:

- Soak the roots before planting
- Water weekly during first two growing seasons.
- Monitor & water during hot periods.
- Remove any weeds and large stones, dig the area over and incorporate some organic matter.
- Avoid planting in waterlogged or frozen (too hard to get the spade in) soil.
- Plant your whips in a staggered double row roughly half a metre apart.
- Water well and give your new hedge a thick mulch. This will help to reduce any competition from weeds as the hedge gets going.
- When pruning is required it should be carried out during the dormant season. Don't be afraid to cut back hard as this will encourage the hedge to thicken up.

Trees:

- All trees must be compliant with Table 1, p.21, BS 8545:2014
- Water weekly during first two growing seasons.
- Monitor & water during hot periods.
- Once the tree can stand unsupported without bending or shifting in the ground, remove the stakes.
- Stakes and ties should be checked regularly for chafing or other damage to the bark.
- Remove guards as soon as they split and before they start to disintegrate.
- Stakes and ties will be removed after no more than two growing seasons.
- The specific aim for pruning will be to maintain good form and the characteristic form of the tree.
- Remove dead, diseased and damaged branches.

The ground below the tree should be managed as existing sward. No soil cultivation required within root protection areas. See Arb report for CEZ and fencing details.



Planting Notes
(These planting notes are guidelines for planning purposes only.)

1.0 - General

- 1.1 - All setting out shall be subject to the Landscape Architect (CA) on site.
- 1.2 - All relevant, current British Standards will apply.
- 1.3 - Planting will not be undertaken during waterlogged or frost bound conditions.

2.0 - Soils

2.1 - It is important that all imported soils have an interpretive report demonstrating fitness for purpose. Imported soils must not only meet BS, but have been found via a soil scientists interpretive report to be fit for the specific landscape function and contain no contaminants. If it is intended to re-use site-won soil then there must be a Soil Resource Survey and Plan - showing that soil is fit for purpose in terms of human health and demonstrate fitness for plant health.

All imported subsoil within shrub planting areas and as a seeding substrate, shall comply with BS 8601:2013 and point 2.1. Cultivate to alleviate any compaction and any sharp surface prior to topsoiling and to ensure suitability for wildflower / grass seeding.

2.2 - All imported topsoil shall comply with BS 3882:2015, point 2.1 and shall be approved by the CA.

2.3 - Typically soil profiles are as follows: 150mm topsoil over 150mm subsoil for grass, 300mm topsoil over 300mm subsoil for shrubs, and 300mm topsoil over 600mm of subsoil for trees.

3.0 - Planting

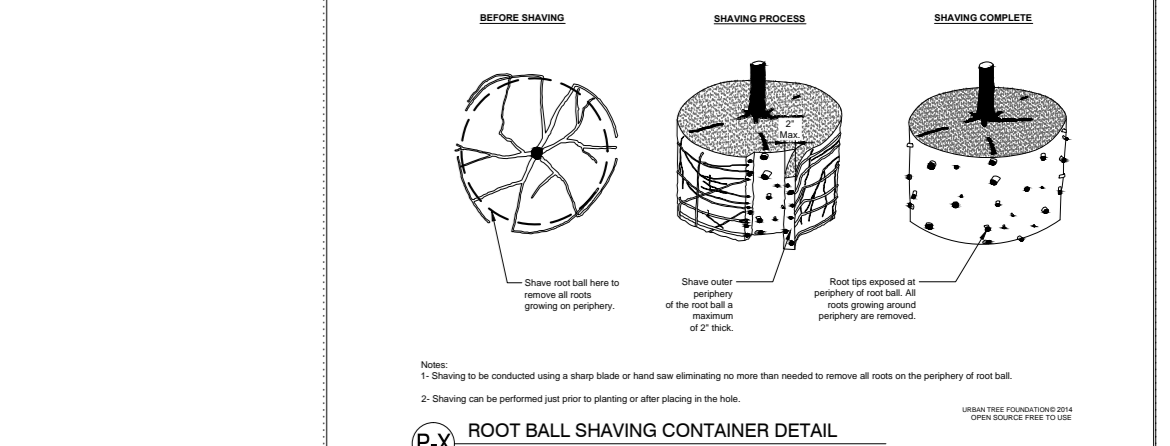
- 3.1 - Trees must be compliant with Table 1, p.21, BS 8545:2014. This is specific to tree form and is in the format of a checklist that should be ticked off by the landscape architect on delivery (and ideally prior to delivery) of trees.
- 3.2 - Tree handling, storage and planting to be in accordance with BS8545. All trees shall be planted in uncompacted tree pits (see detail). This should be applied to the likely rooting zone proximity - allow for 5ml per tree. This shall include drainage provision and irrigation. (See GreenBlue Urban tree planting provisions for their Staking as per planting schedule / details).
- 3.3 - All shrubs shall be planted within a minimum of 300mm topsoil.
- 3.4 - A slow release fertiliser shall be applied to each bed at time of planting.
- 3.5 - Bark mulch shall be applied with a top dressing to each planting bed including tree pits in all soft landscaping areas. Each planted tree will have a 1m diameter circle around it to be stripped of turf or other surface vegetation. Mulch to be laid to a depth of 75mm after planting and tapered to 25mm over root ball.
- 3.6 - Plant species to be as specified and approved by CA.
- 3.7 - All plants shall conform to BS3936-1:1992 and planting operations shall be carried out in accordance with the relevant sections of BS4428-1989.

4.0 Grass/Species-rich/Wildflower seeding

- 4.1 All amenity grass areas shall be topsoiled to a depth of 150mm over an aerated 150mm of subsoil.
- 4.2 All species-rich/Wildflower areas shall be imported or exposed subsoil or existing soil surfaces to be retained.
- 4.3 Areas of grass/species-rich seeding shall be cultivated to a minimum depth of 150mm prior to grass seeding and all stones in excess of 20mm removed. The surface shall be raked to smooth flowing contours and a fine silt.
- 4.4 Grass seed shall be EL1 Flowering lawn mixture by Emergent Seeds Ltd.
- 4.5 Wildflower or species-rich mix to broadcast onto cultivated subsoil/existing soil areas in accordance with seed suppliers recommendations.
- 4.6 Seed shall be broadcast at 5g/sq.m. Seed shall be either BFS9 from British Flora. In year one there shall be 2 establishment cuts. In year two onwards there shall be 2 annual cuts. First cut should be prior to flowering, and second at the early September following setting of seed.

5.0 - Maintenance

- 5.1 - All planted areas shall be subject to a maintenance programme, which will include the replacement of failed plants at the time of practical completion and in each following year.
- 5.2 - The programme of maintenance operations shall include the following:
 - Weeding and fertiliser
 - Top dressing with mulch
 - Replanting/securing/lightening/loosening of tree stakes/ties as required.
 - Litter picking
 - Pruning of trees and hedging



If the roots within the container for the proposed trees require root shaving, due to roots growing peripherally - see the above for correct procedure prior to planting. Perforable wrappings and cages such as simple layer untreated jute and narrow gauge chicken wire cages may be retained until the tree is in position but then the upper third of the wrapping and cage should be removed at the same time as back-filling.

NOTES:

NOT FOR SITE PUBLISHED: This drawing is a general arrangement plan only and is not intended for site purposes.

SCALE: Do not scale from this drawing.

SETTING OUT: All setting out, levels, dimensions to be agreed on site. Do not use the information on this drawing without checking all dimensions on site. Any discrepancies between drawings, specifications and site survey are to be reported to The Urbanists. Order of construction and setting out to be agreed on site.

CR-016: This drawing must be read in conjunction with the contract and all other drawings, details, specifications and schedules. All dimensions are in millimetres unless otherwise stated. Where not controlled by dimensions, areas, columns, the drawings, within the schedule of works, it is the contractor's responsibility to seek verification from The Urbanists before proceeding. The Urbanists shall not be held liable for any errors or omissions in the work in absence of such confirmation.

REVISIONS:

Rev	Date	Description	Drawn	Checked
Rev 01	10/10/2024	Updated Lower Subsoils and tree pit detail	Drawn: PMCD	Checked: G21
Rev 02	27/11/2024	Updated Lower Subsoils and drainage	Drawn: G21	Checked: PMCD
Rev 03	28/11/2024	Updated Lower Subsoils and drainage	Drawn: PMCD	Checked: G21
Rev 04	28/11/2024	Updated Lower Subsoils and drainage	Drawn: PMCD	Checked: G21
Rev 05	10/12/2024	Update to include parking constraints	Drawn: PMCD	Checked: G21

STATUS: RM APP

theurbanists

Client: Taylor Wimpey

Project: Cwmwells, Blackwood

Title: Software's Plan (3/5)

Project ID: Organiser Role Block Level Type Series Dup Rev Status

1835 URB LA XX XX DT 30 03 1 SM

Drawn: PMCD Date: 19/08/21 Checked: LP Scale: 1:200@A0

The Urbanists - The Creative Quarter - BA Morgan Architects - Cardiff - CP10 1AF
 T: 029 2092 6133 E: info@theurbanists.net W: www.theurbanists.net
 © This drawing is copyright and may not be reproduced in whole or part without written authority.