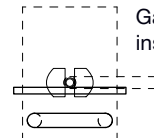


New Motion Business Pro 2.1 + Business Lite 2.1 on a single post fixed to secure base.

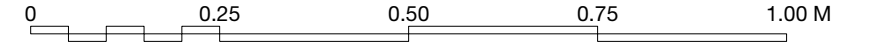
Socket set 1m from ground level

Infrastructure (duct) installed to enable future provision of additional charging points.

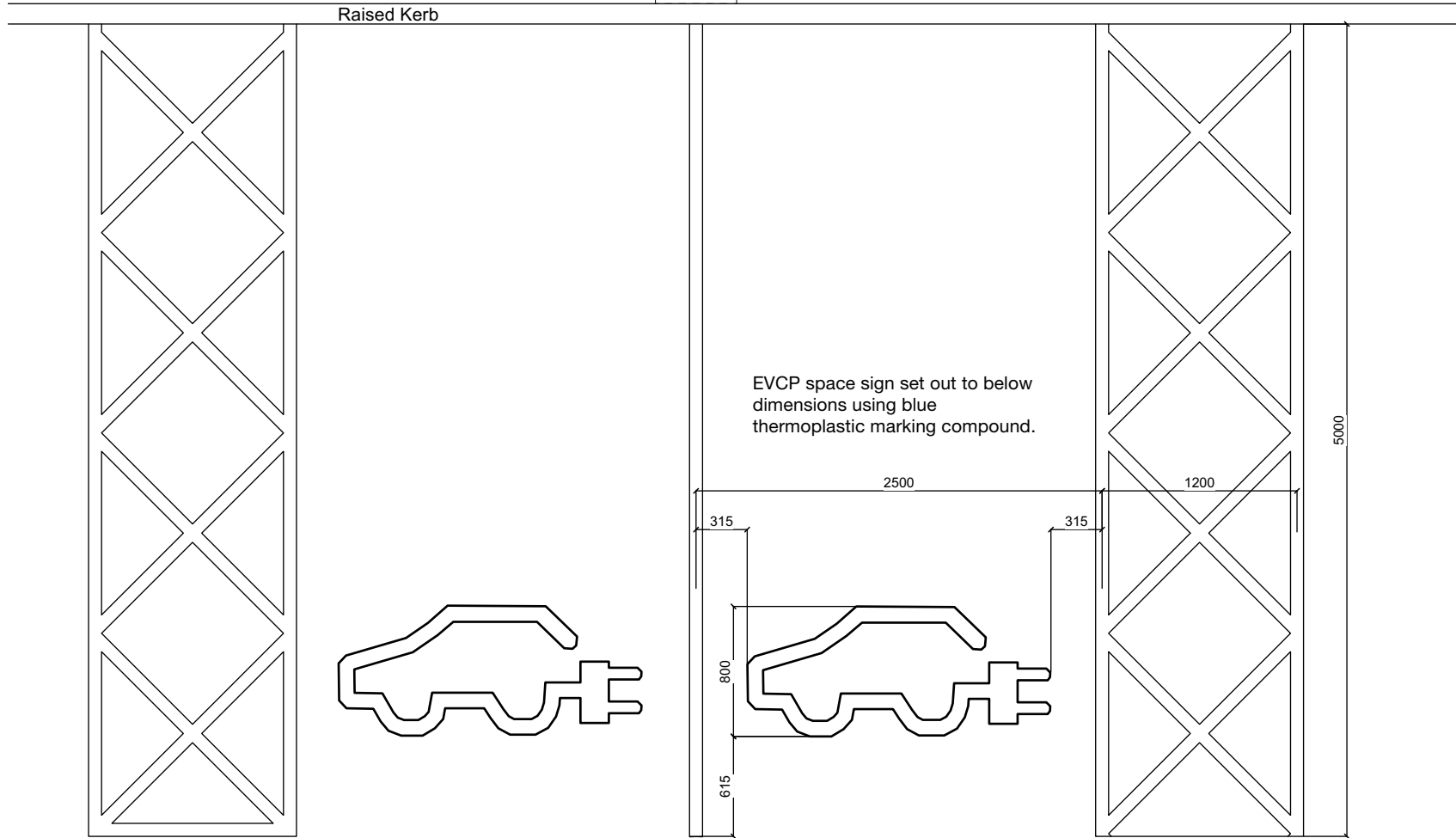
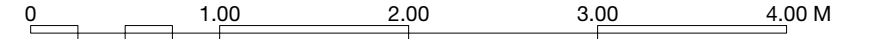
Galvanised steel protection rail installed in front of charger



Scale 1:10 @ A3



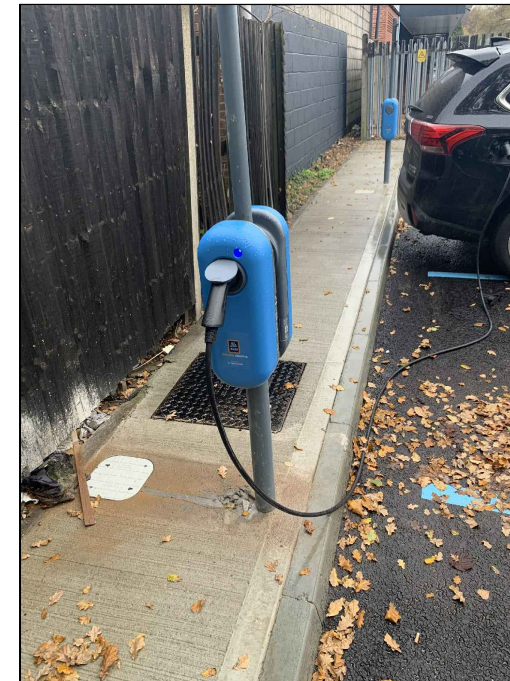
Scale 1:40 @ A3



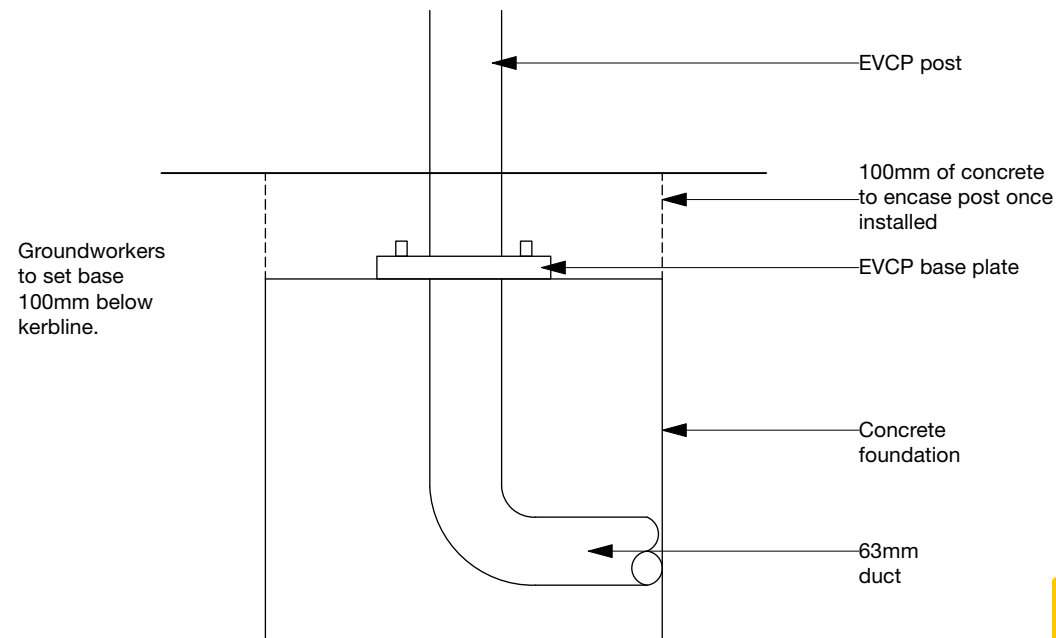
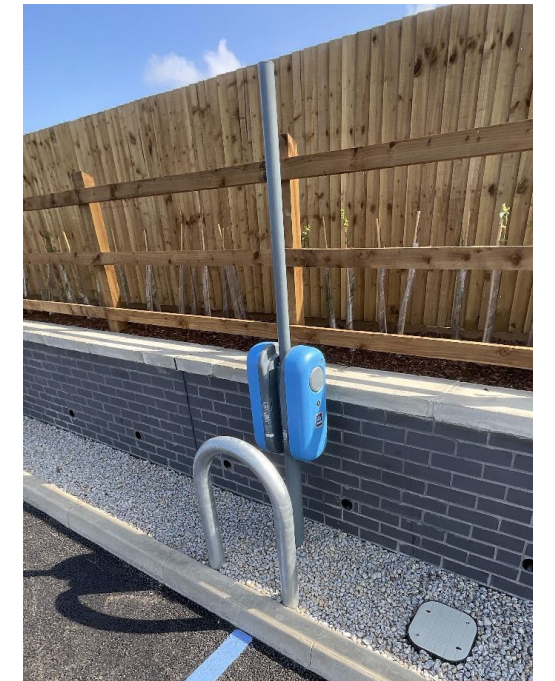
1:40 Typical parking space setting out



Sample signage applied to EVCP post



Example EVCP post with mounted chargers



1:10 Typical post base detail

PO2	13/02/2024	JS	GS	Project description updated.
PO1	10/01/2024	JS	GS	Preliminary Issue.
Rev	Date	By	Ap	Note

Do not scale this drawing



Kendall Kingscott

Glentworth Court, Lime Kiln Close,
Stoke Gifford, Bristol, BS34 8SR
+44 (0)117 931 2062
www.kendallkingscott.co.uk

Project
Mafon Road, Nelson, Caerphilly

Client
Aldi Stores Ltd

Date	10/01/2024	Purpose/Status	PLANNING
Scale	Varies	Drawn	JS
Checked	GS	Paper Size	ISO A3
Filename	200413 EVCP Parking Space Detail.vwx		

Drawing Title
EVCP Parking Space Detail

Project Number/Drawing Number
200413-AD5950

Revision
P02

Only to be used on the site for which designed. The electronic transmission of designs/information contained in this drawing is carried out entirely at the User's risk and Kendall Kingscott Ltd. will have no liability for any errors or inaccuracies arising therefrom. The production of amended or updated information from the said design/information by the User is entirely the responsibility of the User and Kendall Kingscott Ltd. shall have no responsibility in respect thereof whatsoever.