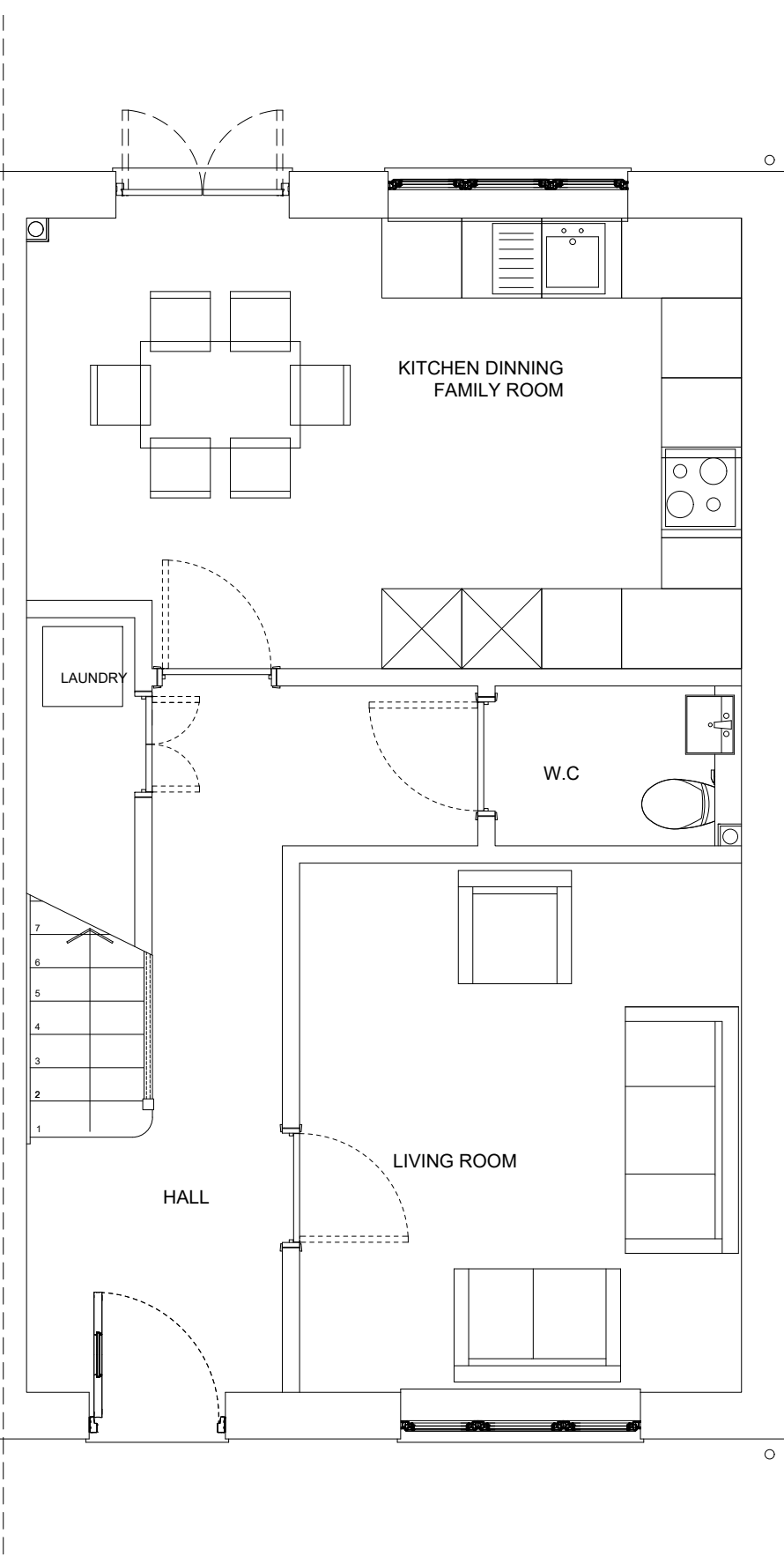


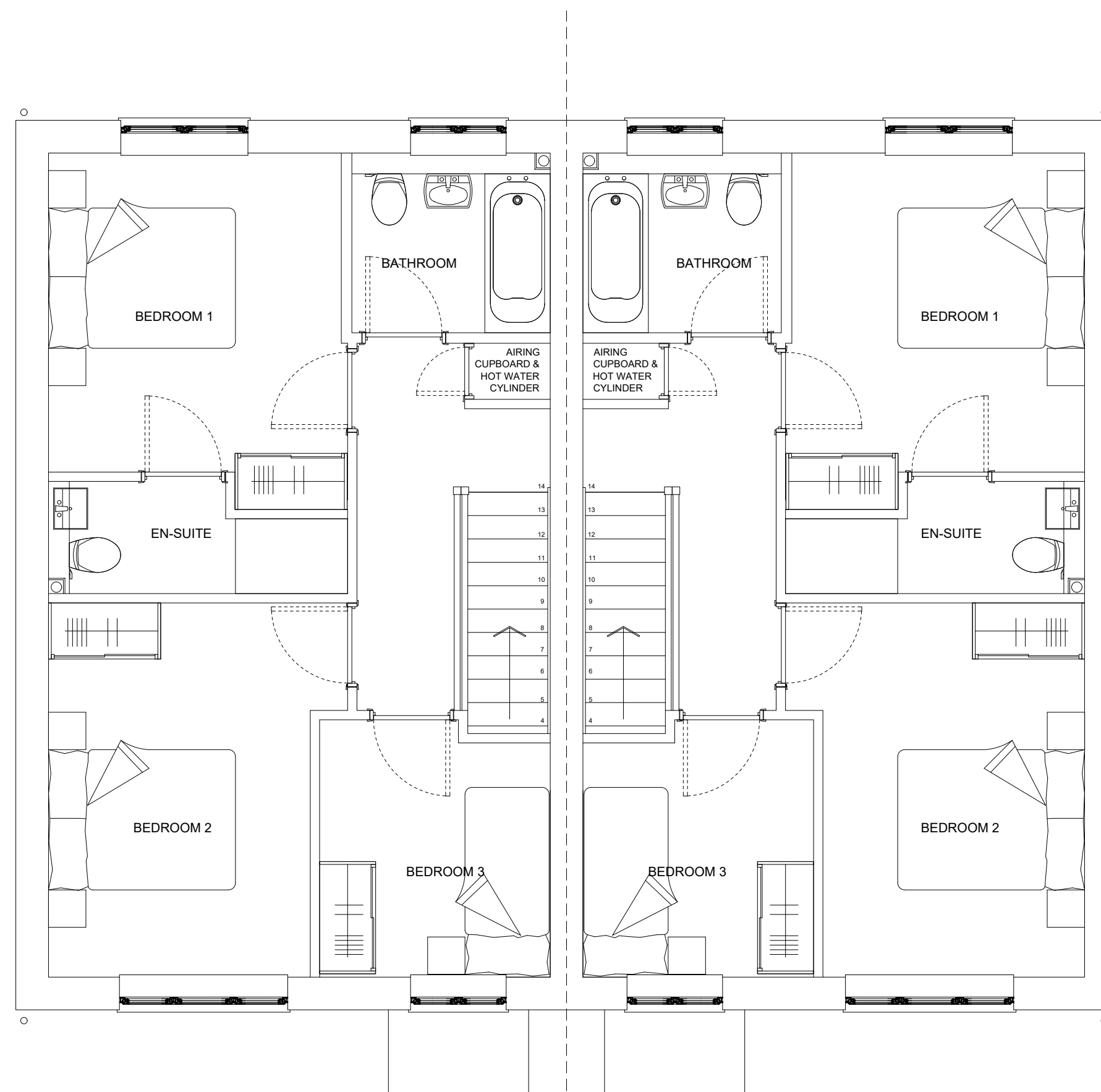
Ground Floor

Gross Internal Area - 47 m<sup>2</sup>  
Total Gross Internal Area - 94 m<sup>2</sup>



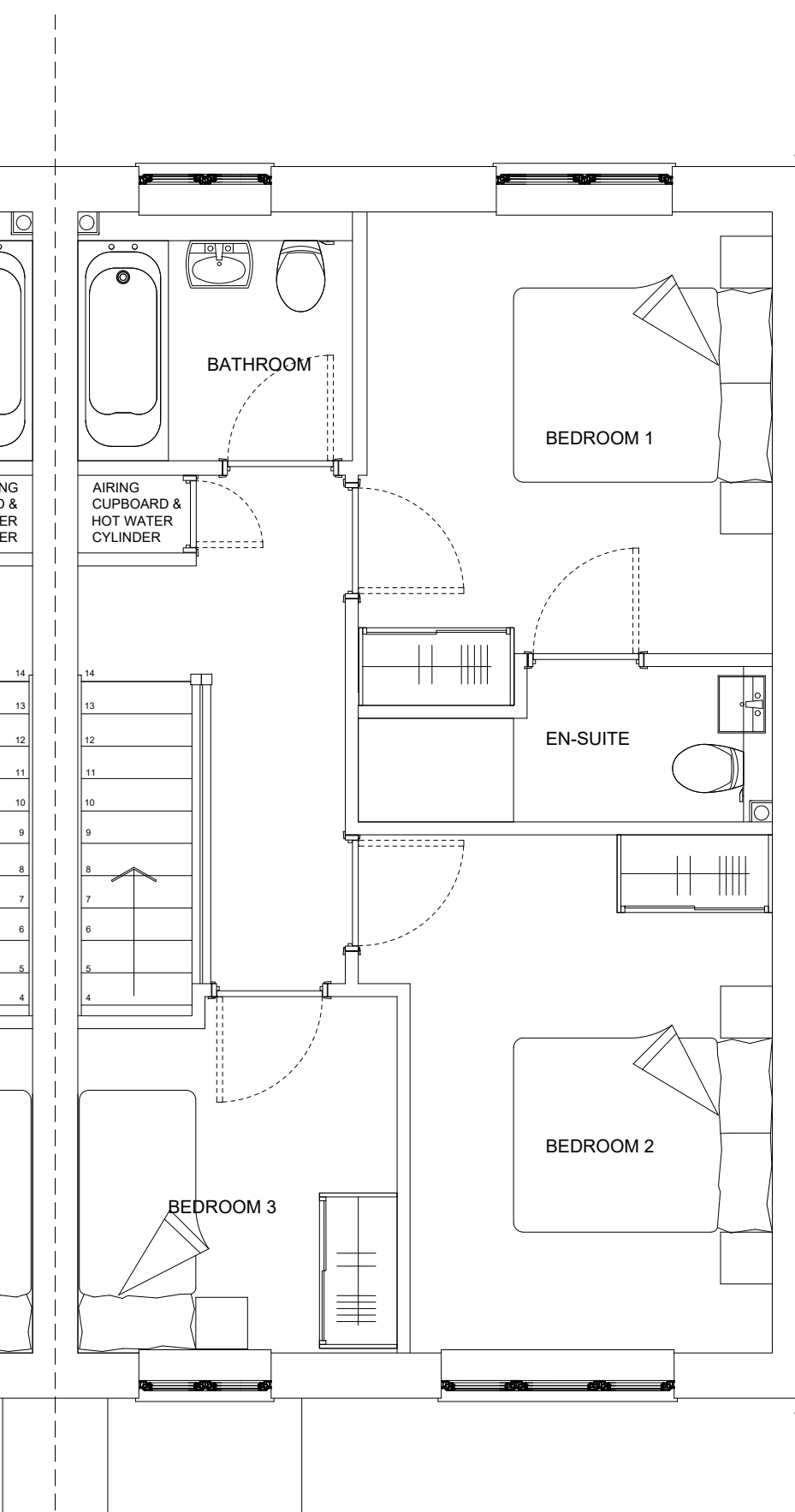
Ground Floor

Gross Internal Area - 47 m<sup>2</sup>  
Total Gross Internal Area - 94 m<sup>2</sup>



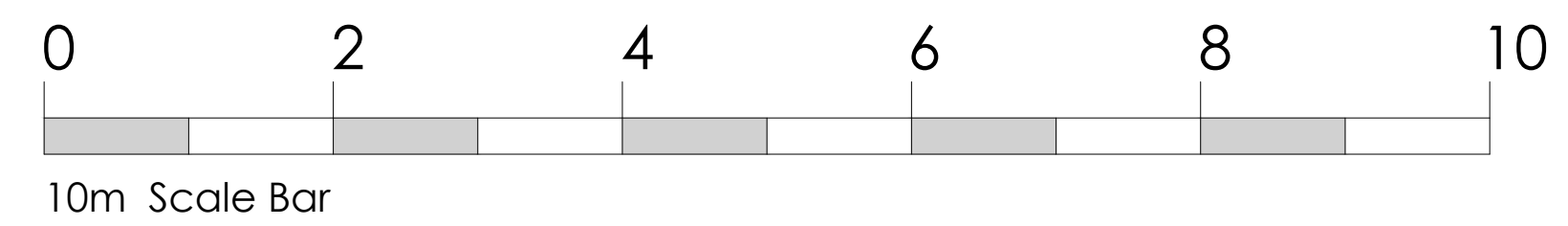
First Floor

Gross Internal Area - 47 m<sup>2</sup>



First Floor

Gross Internal Area - 47 m<sup>2</sup>




REV	DATE	DESCRIPTION	BY
CHECKED BY		GL	

IN CASE OF DOUBT OR DISCREPANCIES PLEASE REFER TO ARCHITECT FOR INSTRUCTIONS.  
THIS DRAWING SHOULD NOT BE SCALED.  
THIS DRAWING IS COPYRIGHT.

PROJECT :  
**PROPOSED NEW DWELLINGS**  
BRYN GOLAU  
HENGOED  
CF82 7LB

DRAWING TITLE :  
**PROPOSED PLANS**



Chapter 3 Architects Ltd  
15 Neptune Court  
Vanguard Way  
Cardiff, UK, CF24 5PJ.  
Chapter 3 Architects, Limited Company  
Reg No. 12195117 (England and Wales)

DATE : MARCH 2024	SCALE : 1:50 @ A1
JOB NO. : 0056	STATUS : PLANNING
DWG NO. : PL 105	REV :