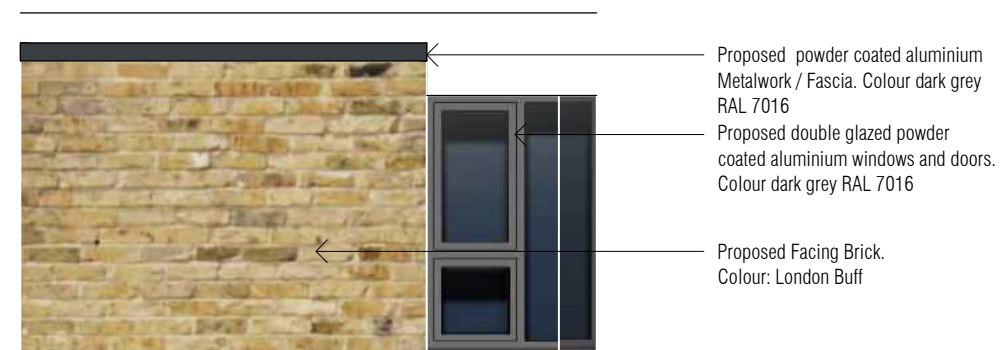


**[02] COURTYARD 1 (FULL)** 1:200



- Proposed powder coated aluminium Metalwork / Fascia. Colour dark grey RAL 7016
- Proposed double glazed powder coated aluminium windows and doors. Colour dark grey RAL 7016
- Proposed Facing Brick. Colour: London Buff

**[03] COURTYARD 1 (PARTIAL)** nts



London buff facing brick to match existing.



Window frames, trims, sills, fascia, metalwork in PPC aluminium RAL 7016

© ARKON ASSOCIATES LTD.  
 THIS DRAWING IS THE PROPERTY OF ARKON ASSOCIATES LTD. AND IS ISSUED ON THE CONDITION THAT IT IS NOT REPRODUCED, DISCLOSED OR COPIED TO ANY UNAUTHORISED PERSON IN WHOLE OR PART WITHOUT PRIOR WRITTEN CONSENT.  
 NO DIMENSIONS ARE TO BE SCALED FROM THIS DRAWING. ALL DIMENSIONS STATED MUST BE VERIFIED ON SITE. THE ARCHITECT MUST BE ADVISED OF ANY DISCREPANCIES PRIOR TO ANY ITEM OF WORK BEING PUT IN HAND.  
 THIS DRAWING MUST BE READ TOGETHER WITH THE SPECIFICATION, BILL OF QUANTITIES AND RELATED DRAWINGS.

Revision: By:

CLIENT SUTTON HOUSING SOCIETY	TITLE PROPOSED EXTERNAL MATERIALS
PROJECT 14 GRIFFITHS COURT	SCALE 1:nts@A3
DATE JAN-23	DRAWN BY ACM
CHECKED BY LJC	PROJECT No. 5218
ISSUE STATUS PLANNING	DWG No. 601
	REV. -



The Old Bank  
 162 High Street  
 Stevenage  
 Hertfordshire  
 SG1 3LL  
 T: 01438 359816  
 E: enquiries@arkonassociates.co.uk  
 www.arkonassociates.co.uk