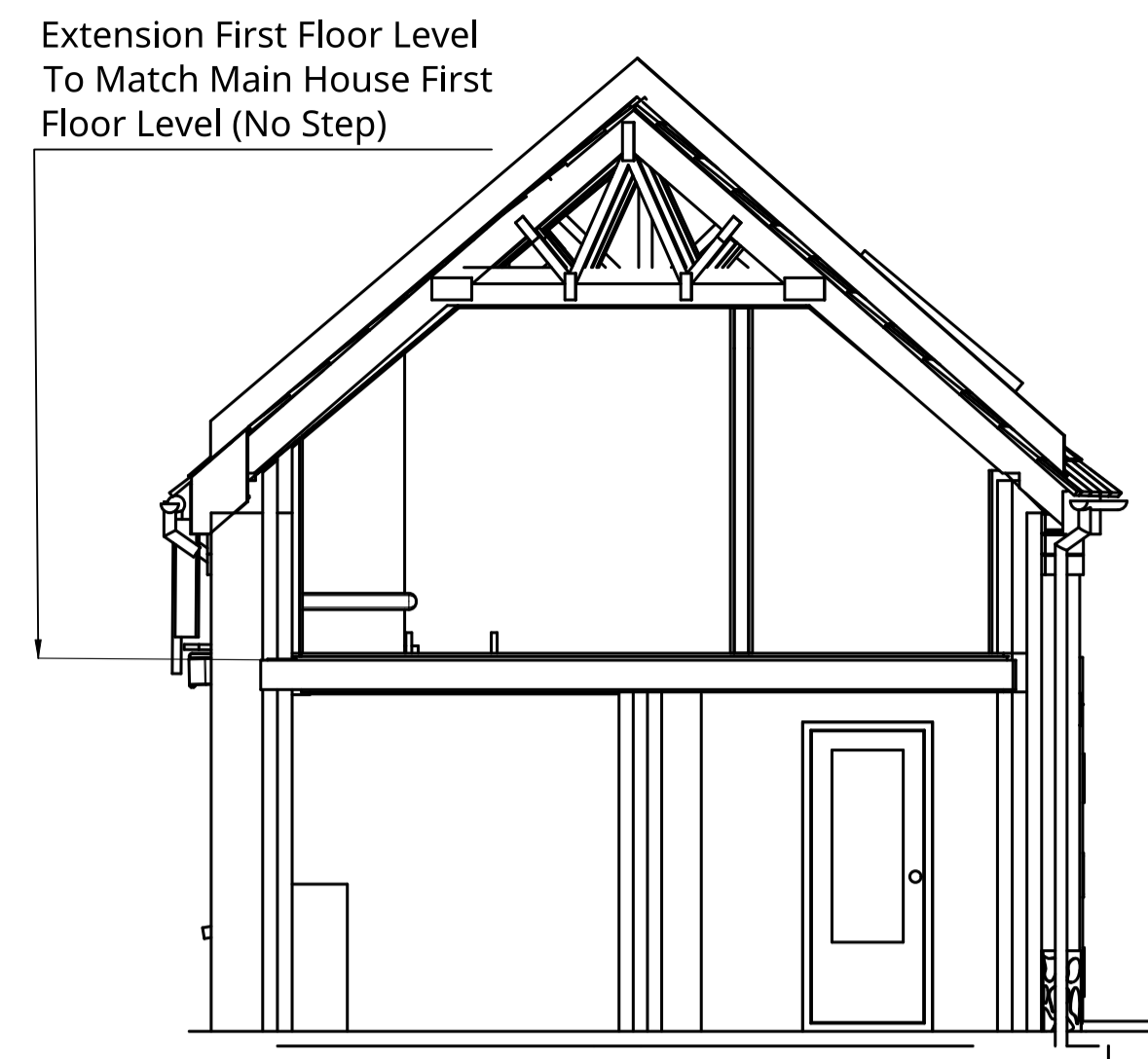
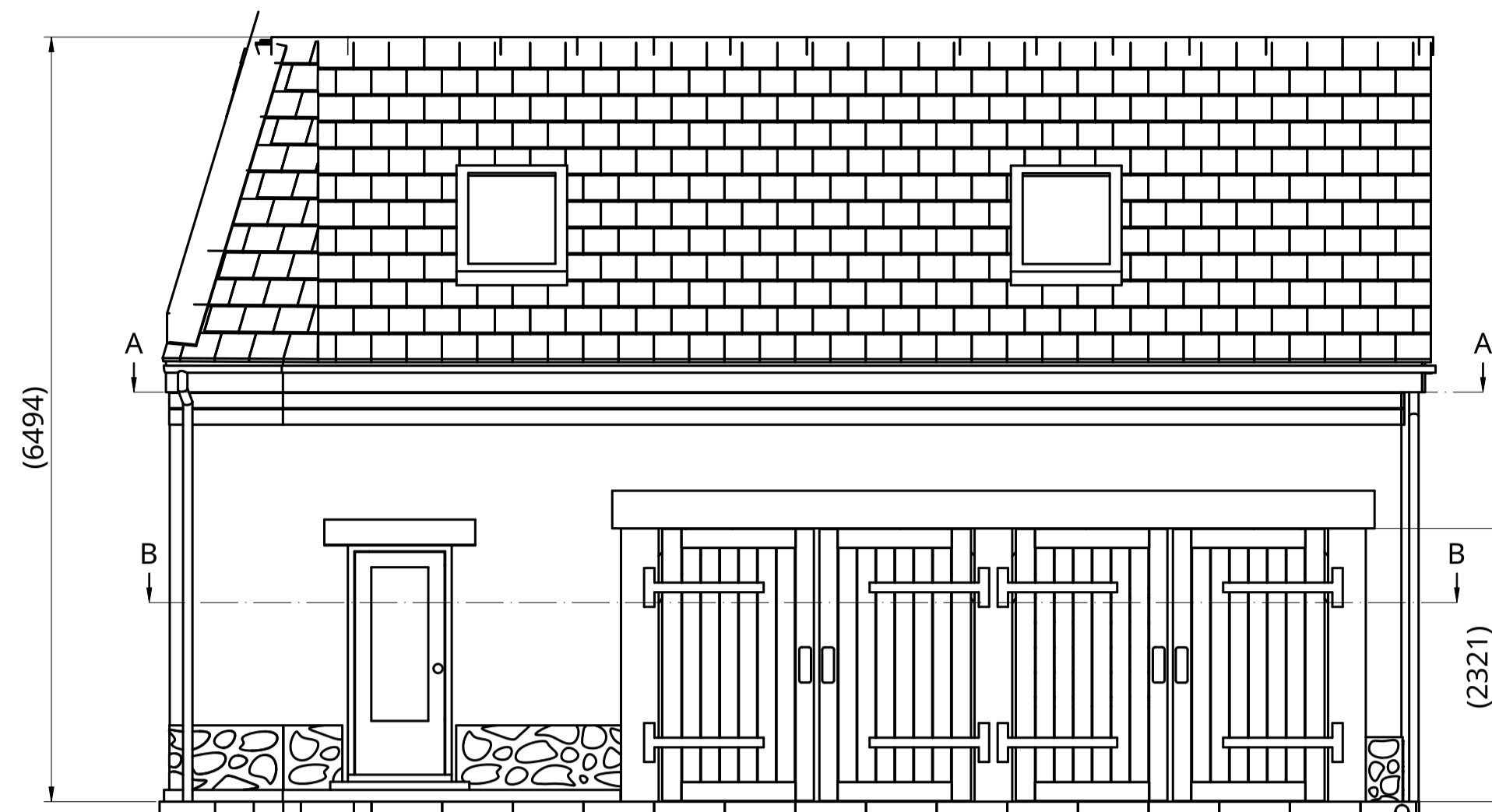


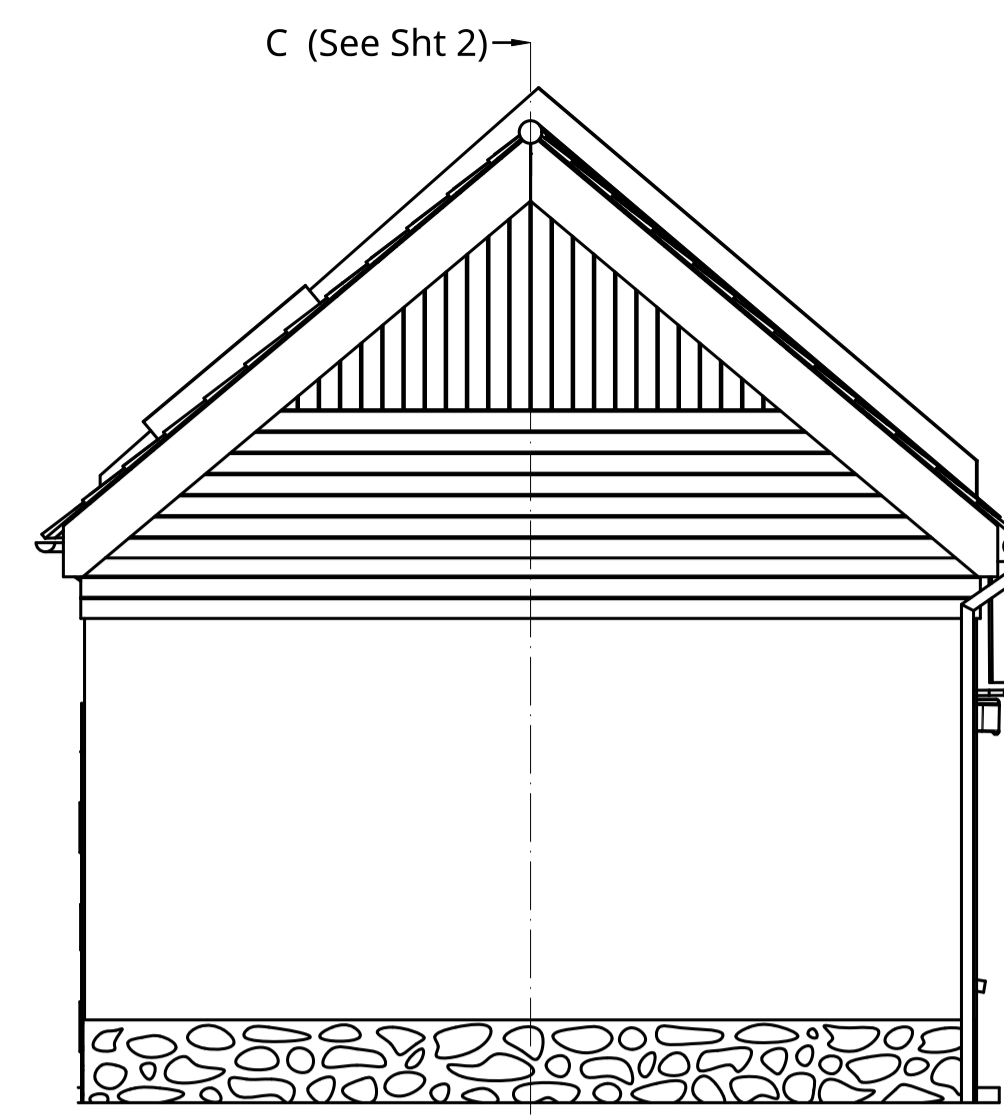
12 11 10 9 8 7 6 5 4 3 2 1



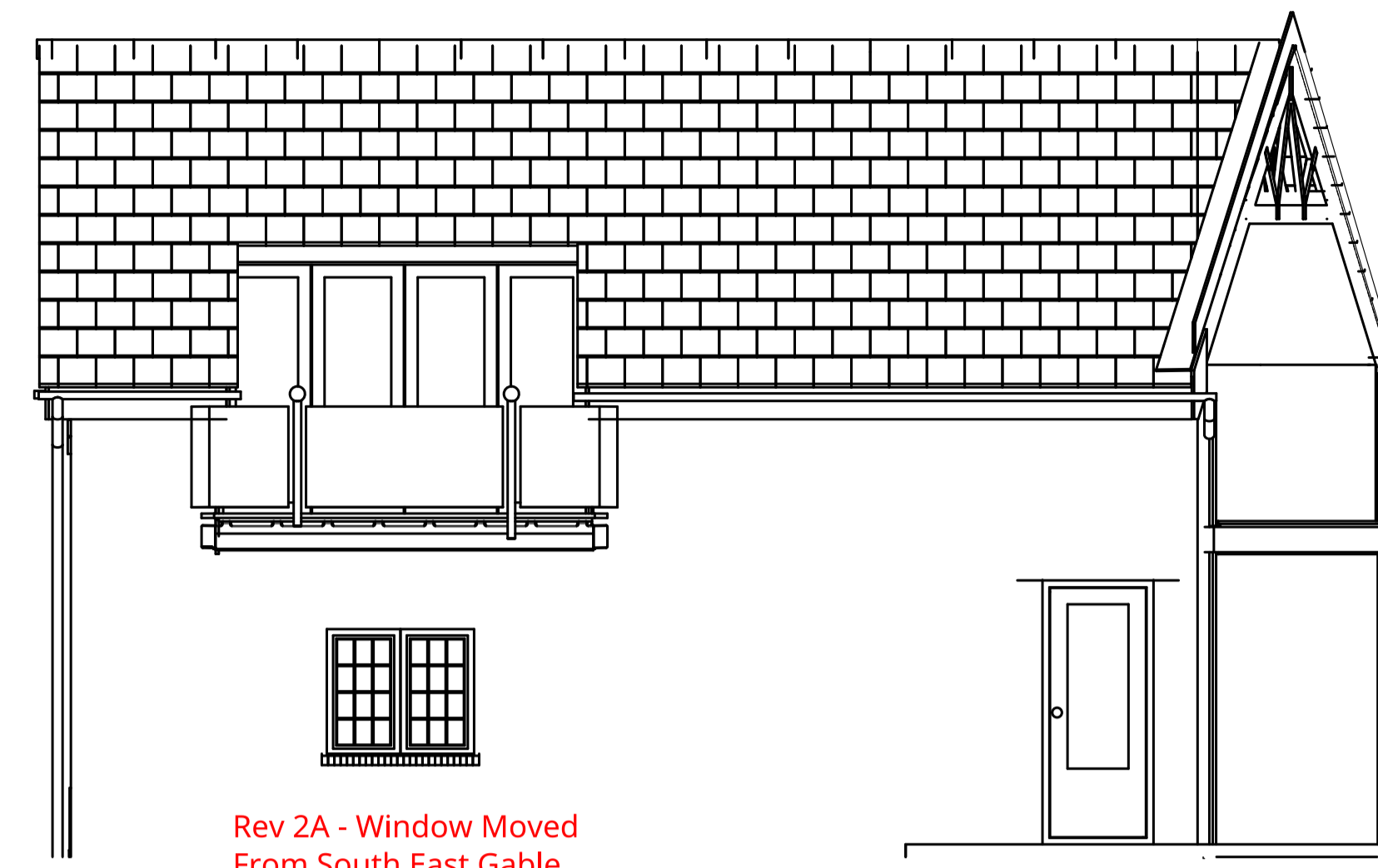
NORTH WEST ELEVATION



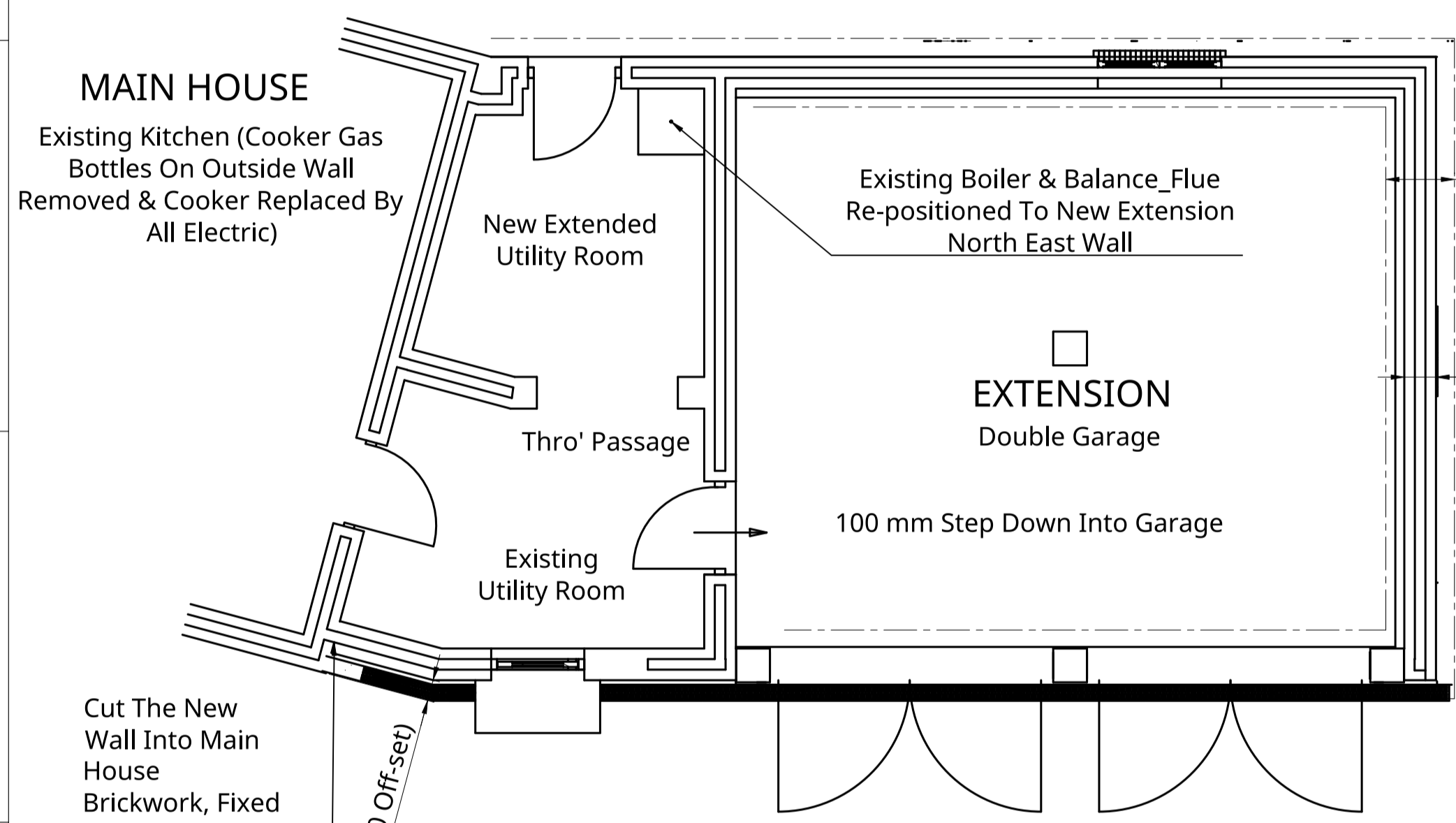
SOUTH WEST ELEVATION



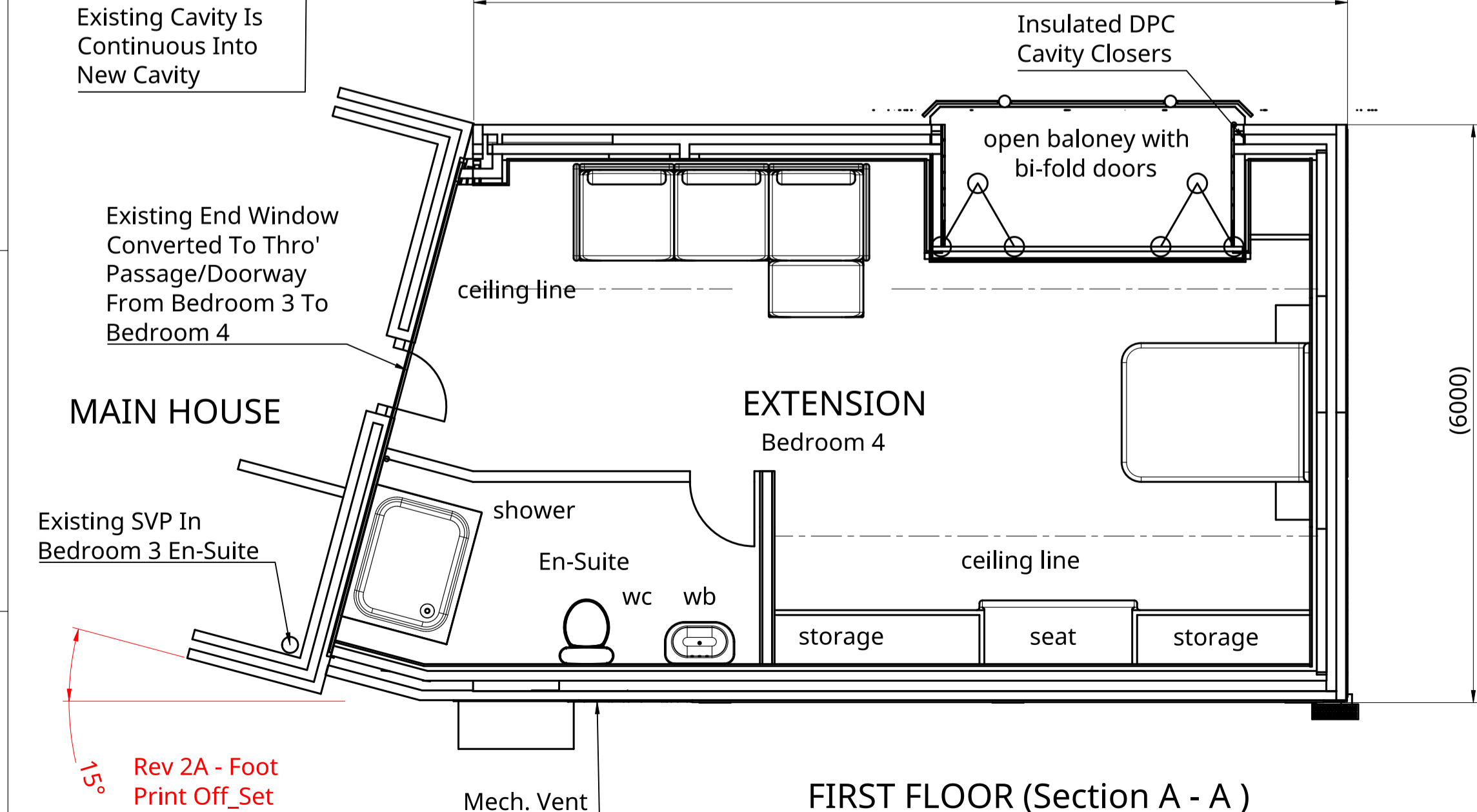
SOUTH EAST ELEVATION



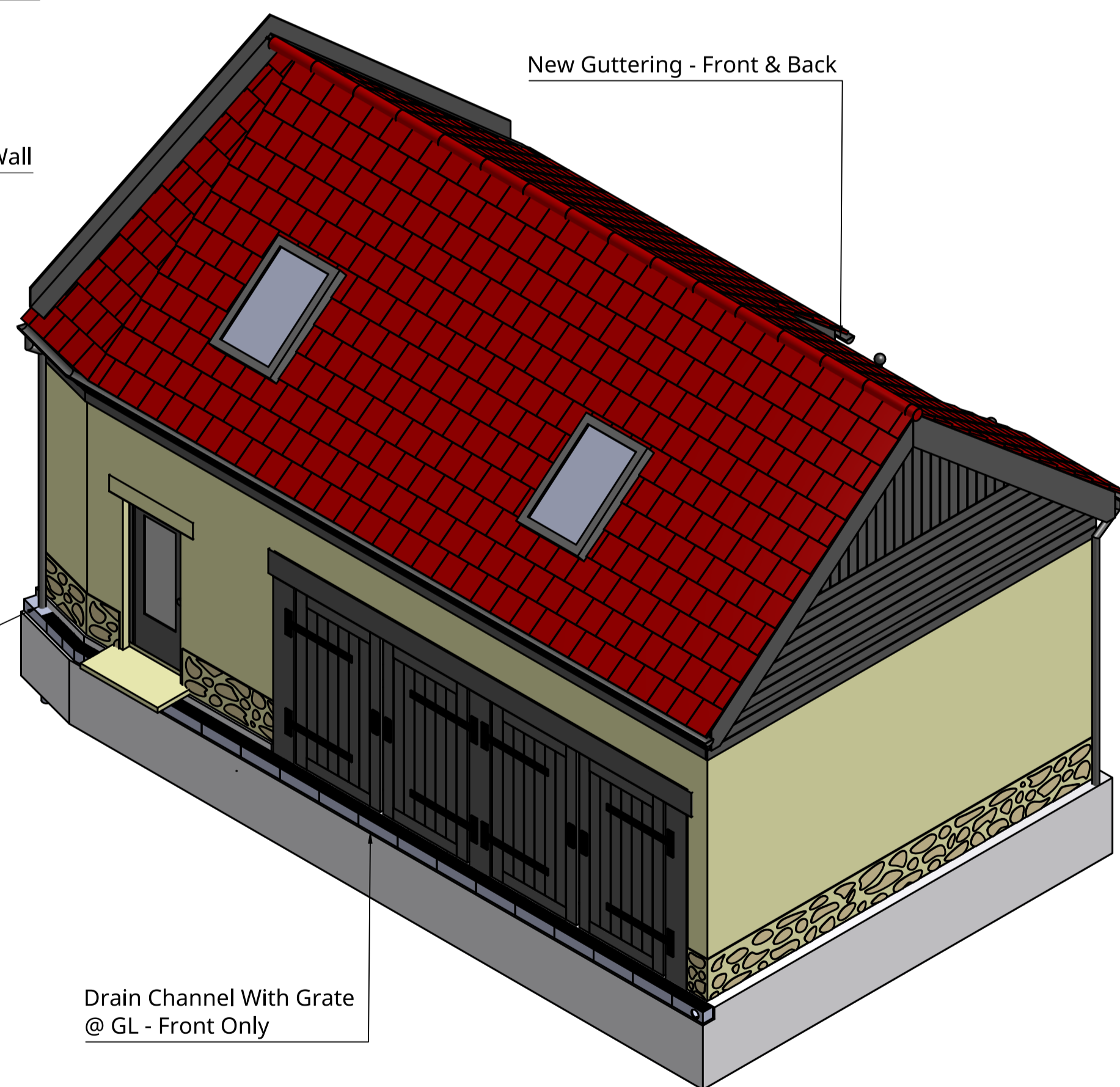
NORTH EAST ELEVATION



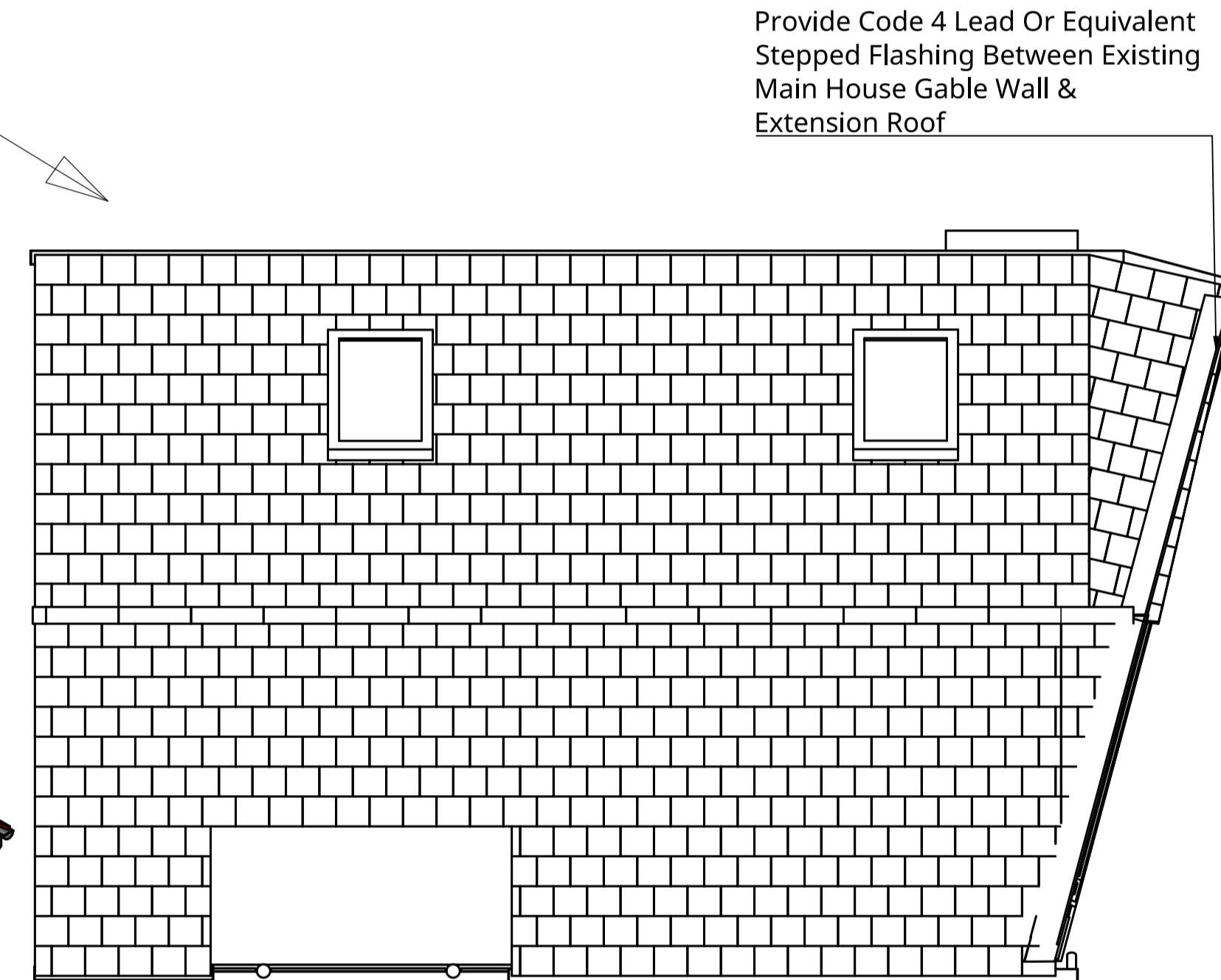
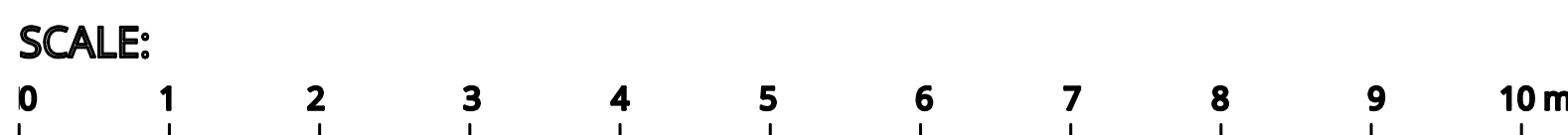
GROUND FLOOR (Section B - B)



FIRST FLOOR (Section A - A)



ARTIST IMPRESSION
Front Aspect In Direction Of Arrow A



PLAN

CONSTRUCTION NOTES:

- 1) Double Block Construction
- 2) External Fasia - Partly Rendered In Keeping With Main House & Partly Timber/Stone Clad In Keeping With Surrounding Agricultural Building
- 3) All Internal Partitions To Be Sound Insulated Studwork.

UNLESS OTHERWISE SPECIFIED, DIMENSIONS ARE IN MILLIMETERS				PROPOSED EXTENSION	
NAME	SIGNATURE	DATE	TITLE		
DRAWN	STEPHEN CUDDIHY	2021-10-29	WYLD COURT MILL - EX13 5TZ (Double Garage Extension With Room In Roof - 15° Foot Print Off_Set)		
CHECKED			SIZE	DWG NO.	REV.
APPROVED			A1	CUDD 2017 - 003 Sht 1	2A
DO NOT SCALE DRAWING			SCALE	WEIGHT	SHEET
BREAK ALL SHARP EDGES AND REMOVE BURRS			1:50		1 of 2
FIRST ANGLE PROJECTION	MATERIAL	FINISH			

12 11 10 9 8 7 6 5 4 3 2 1