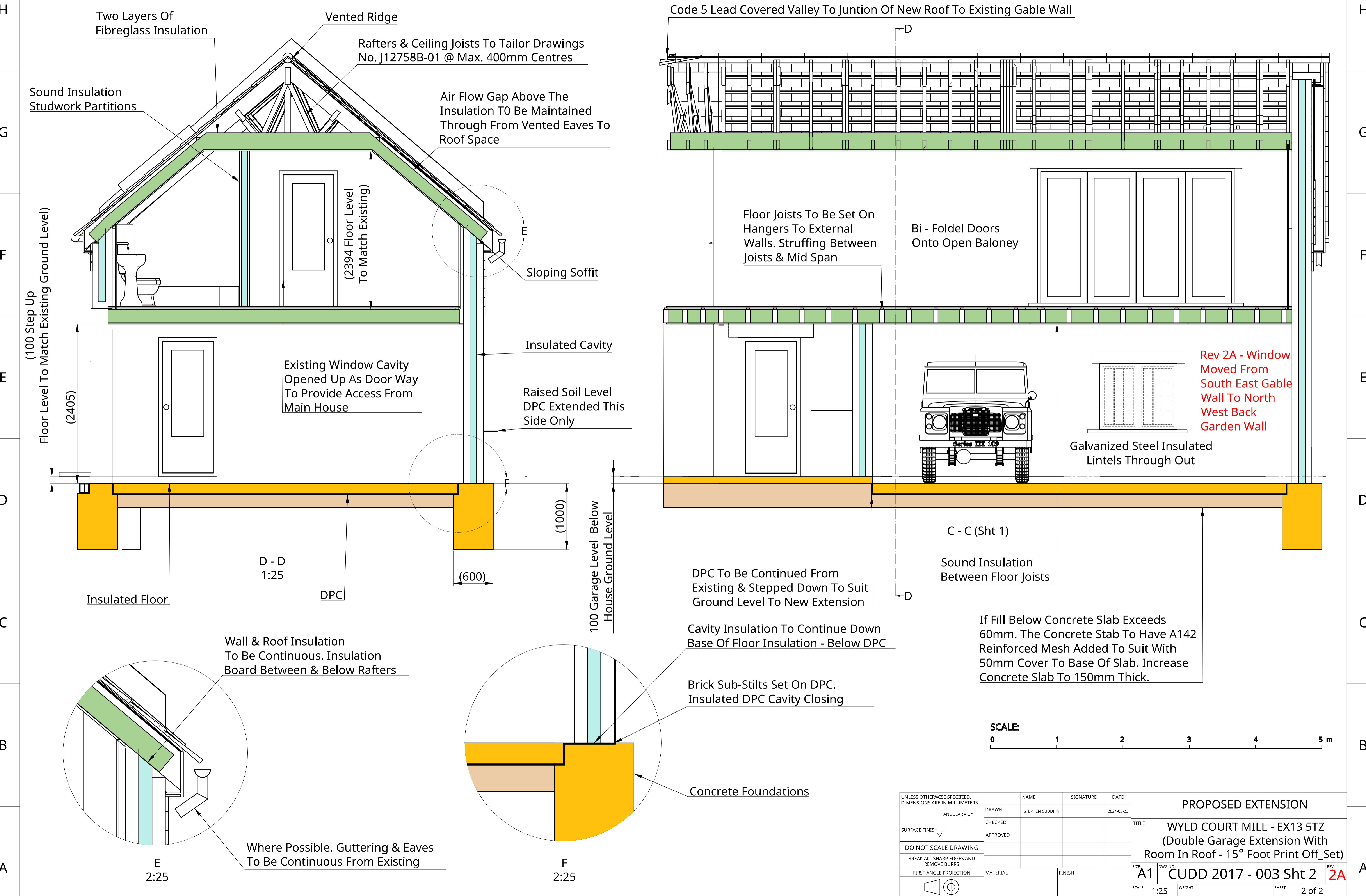


12 11 10 9 8 7 6 5 4 3 2 1



Floor Level To Match Existing Ground Level
(2405)

D - D
1:25

E
2:25

Existing Window Cavity
Opened Up As Door Way
To Provide Access From
Main House

DPC

Wall & Roof Insulation
To Be Continuous. Insulation
Board Between & Below Rafters

Where Possible, Guttering & Eaves
To Be Continuous From Existing

Rafters & Ceiling Joists To Tailor Drawings
No. J12758B-01 @ Max. 400mm Centres

Air Flow Gap Above The
Insulation To Be Maintained
Through From Vented Eaves To
Roof Space

Sloping Soffit

Insulated Cavity

Raised Soil Level
DPC Extended This
Side Only

(600)

100 Garage Level Below
House Ground Level

F
2:25

Code 5 Lead Covered Valley To Junction Of New Roof To Existing Gable Wall

Floor Joists To Be Set On
Hangers To External
Walls. Struffing Between
Joists & Mid Span

Bi - Fold Doors
Onto Open Baloney

Rev 2A - Window
Moved From
South East Gable
Wall To North
West Back
Garden Wall

Galvanized Steel Insulated
Lintels Through Out

C - C (Sht 1)

Sound Insulation
Between Floor Joists

DPC To Be Continued From
Existing & Stepped Down To Suit
Ground Level To New Extension

Cavity Insulation To Continue Down
Base Of Floor Insulation - Below DPC

Brick Sub-Stilts Set On DPC.
Insulated DPC Cavity Closing

Concrete Foundations

If Fill Below Concrete Slab Exceeds
60mm. The Concrete Slab To Have A142
Reinforced Mesh Added To Suit With
50mm Cover To Base Of Slab. Increase
Concrete Slab To 150mm Thick.

SCALE:
0 1 2 3 4 5 m

UNLESS OTHERWISE SPECIFIED, DIMENSIONS ARE IN MILLIMETERS				NAME				SIGNATURE				DATE			
ANGULAR = ± °				DRAWN				STEPHEN CUDDIHY				2024-03-23			
SURFACE FINISH				CHECKED				APPROVED				TITLE			
DO NOT SCALE DRAWING				BREAK ALL SHARP EDGES AND REMOVE BURRS				FIRST ANGLE PROJECTION				MATERIAL			
FINISH				SCALE				WEIGHT				SHEET			
PROPOSED EXTENSION				WYLD COURT MILL - EX13 5TZ (Double Garage Extension With Room In Roof - 15° Foot Print Off_Set)				A1				CUDD 2017 - 003 Sht 2			
1:25				2 of 2				REV				2A			

12 11 10 9 8 7 6 5 4 3 2 1