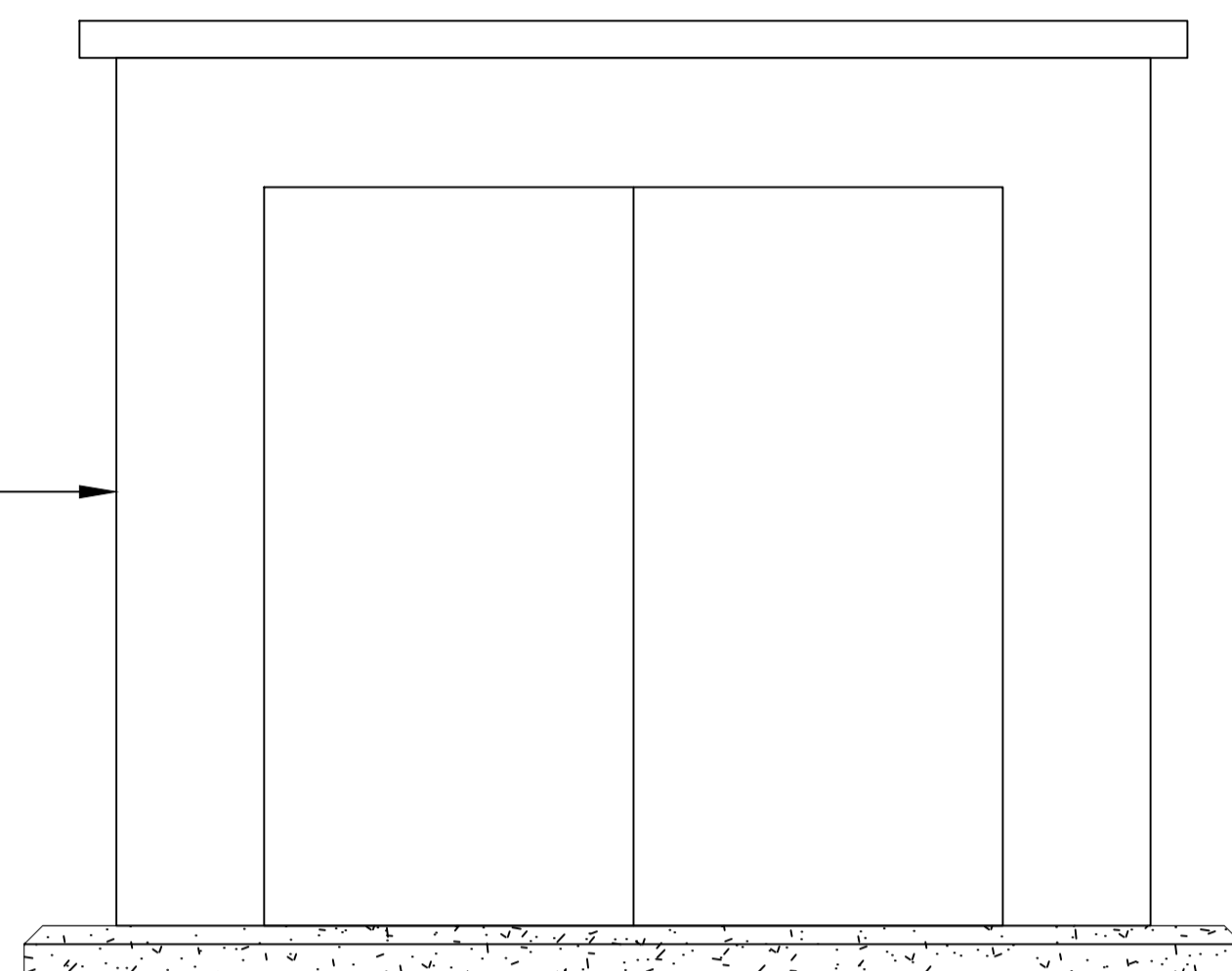


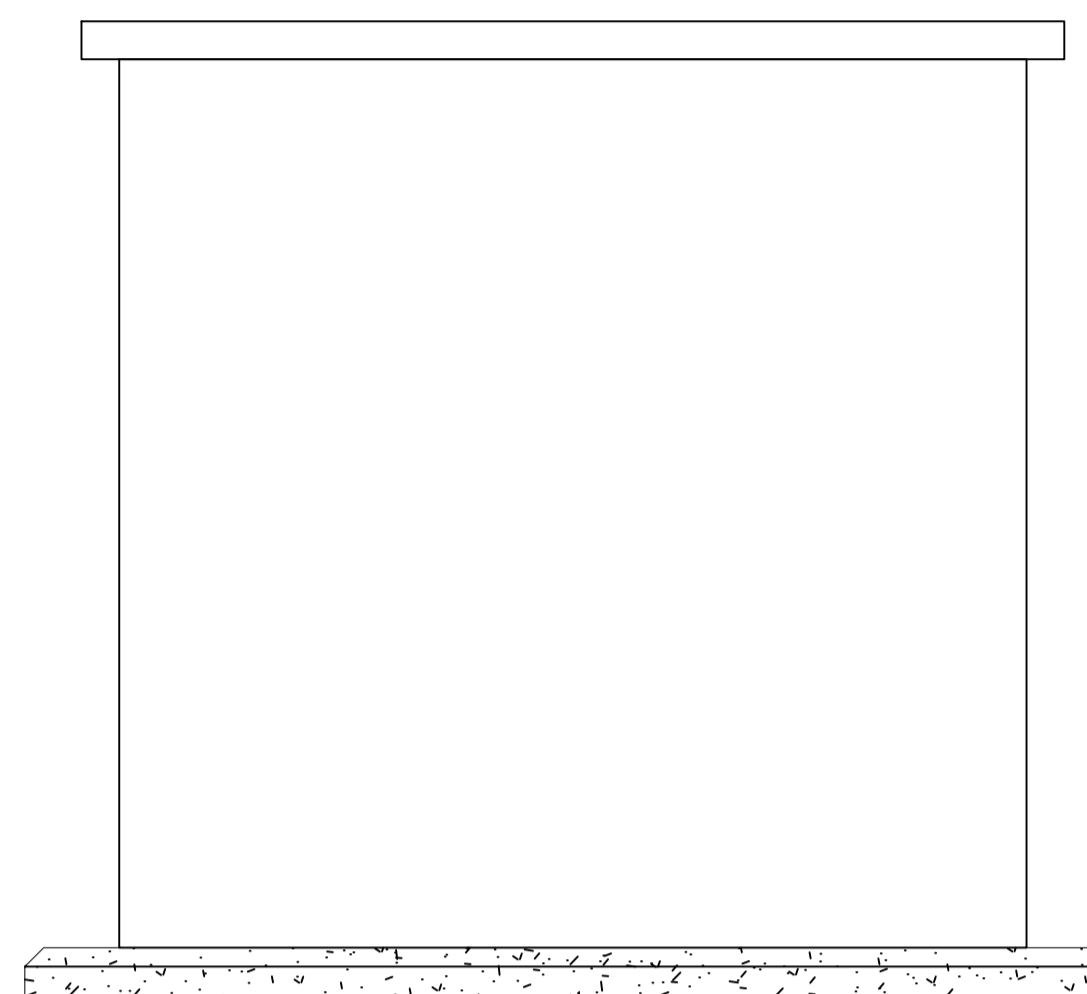
DRAWING NOTES

COPYRIGHT ©
 This drawing and the details herein are the copyright of MBH Design Studio Ltd. and must not be reproduced, altered or passed to any third party without prior written consent.
 This drawing has been produced for the project listed below, is submitted in support of this application to the Local Planning Authority and is not intended for use by any other person or for any other purpose.
 Every effort has been made to ensure the accuracy of these drawings, however MBH Design Studio Ltd. accept no responsibility for any discrepancies arising from the reuse of survey information and preliminary drawings commissioned by the Applicant from others.

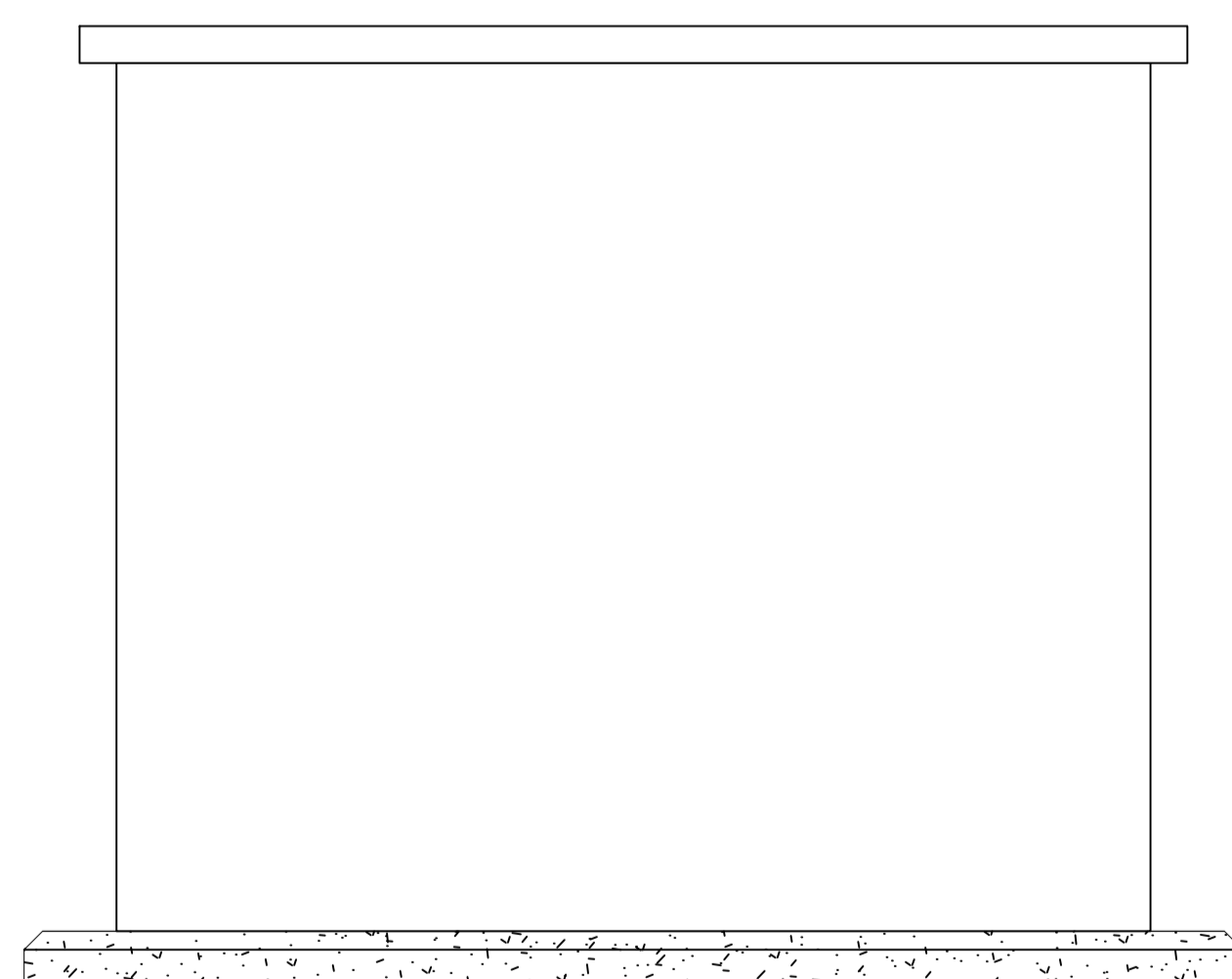
SUBSTATION COMPRISED OF GRP PANELS. TO BE FINISHED IN LIGHT GREY 10A07



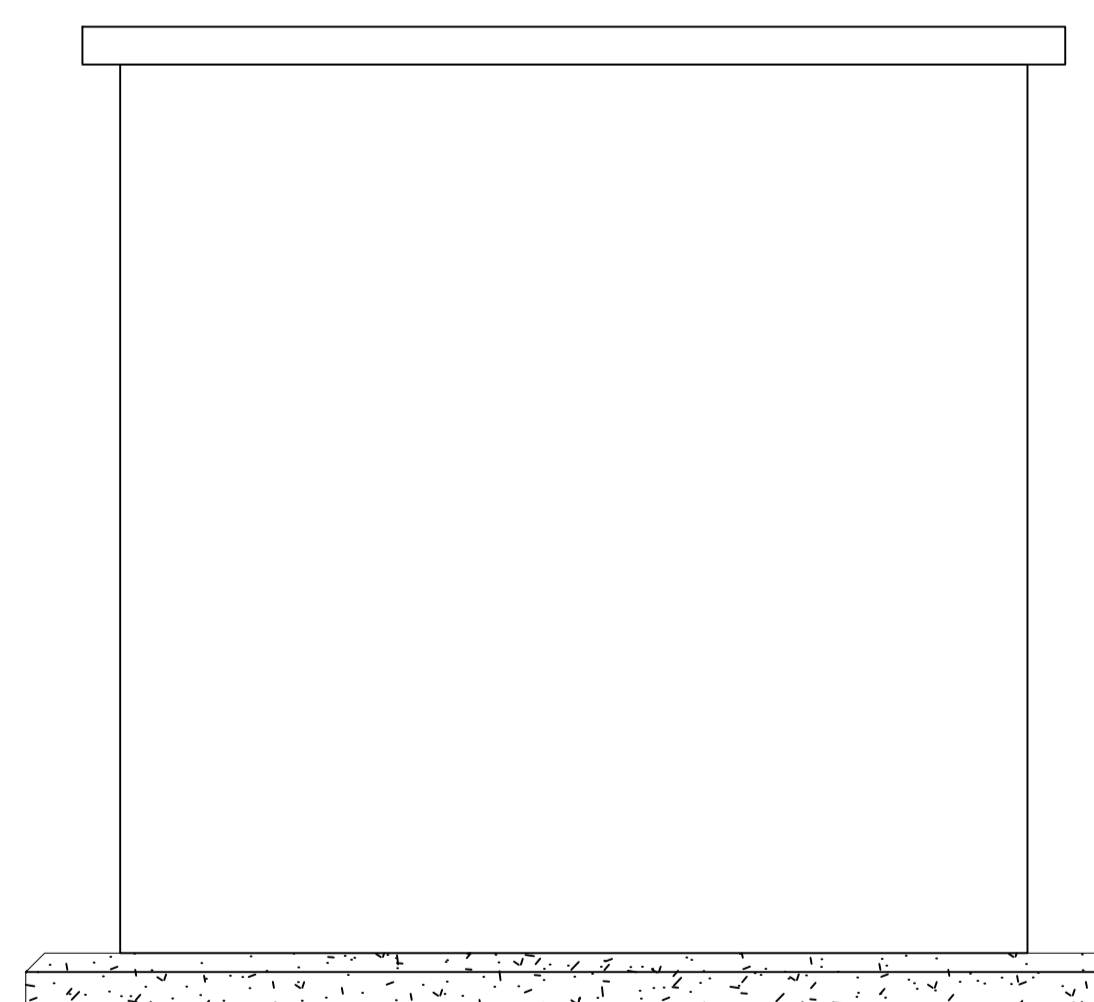
LV UNIT
 ELEVATION A - **EAST**
 SCALE - 1:20



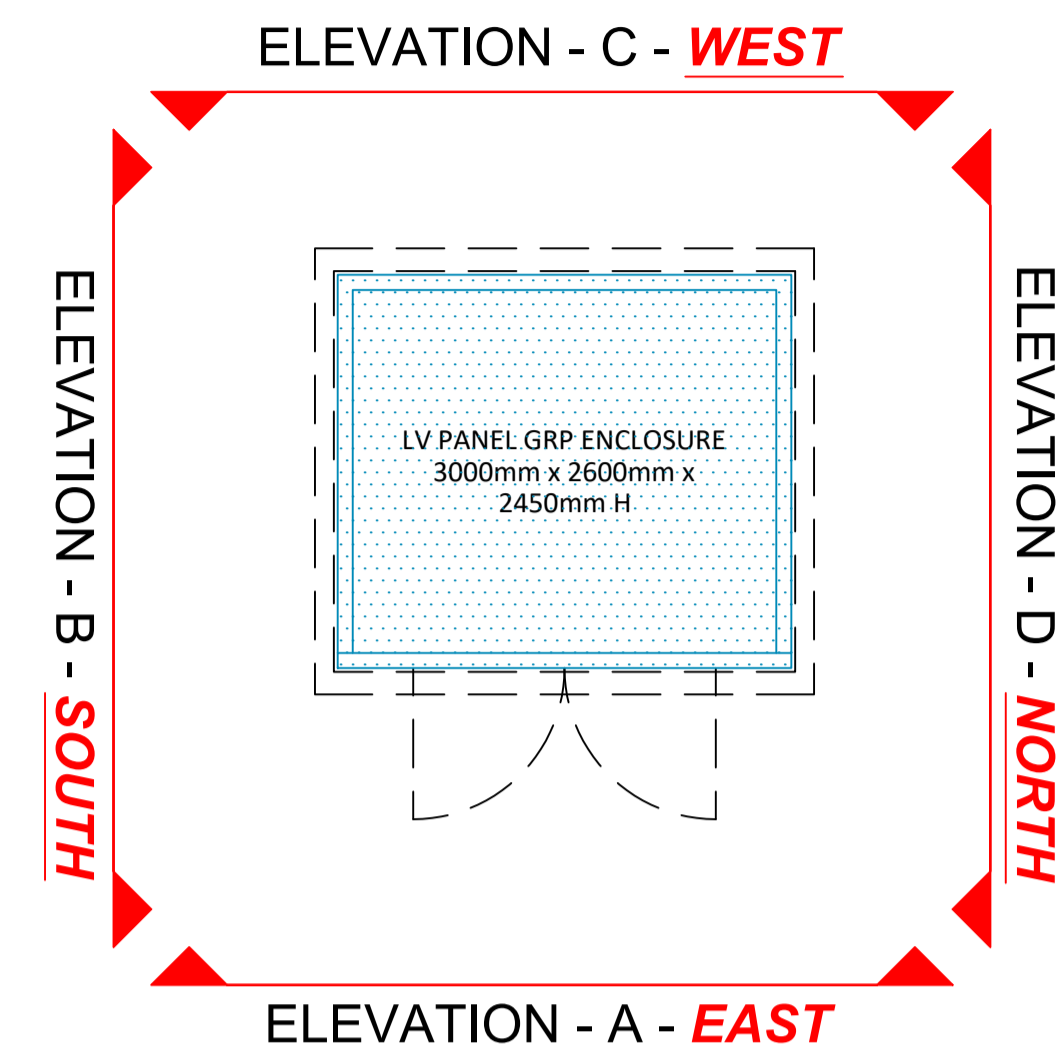
LV UNIT
 ELEVATION B - **SOUTH**
 SCALE - 1:20



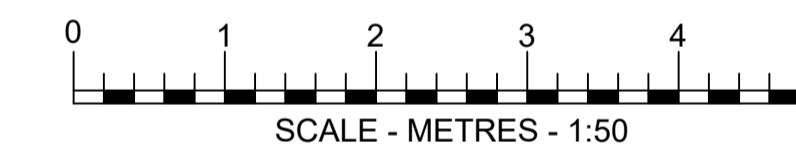
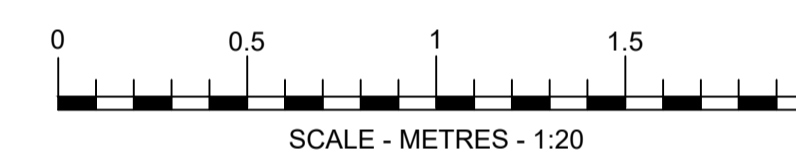
LV UNIT
 ELEVATION C - **WEST**
 SCALE - 1:20



LV UNIT
 ELEVATION D - **SOUTH**
 SCALE - 1:20



GRP SUBSTATION
 SCALE - 1:50



REV	DATE	DESCRIPTION	DRAWN/CHECKED

REVISION NOTES

PLANNING



MBH Design Studio Ltd.
 Rosemount House, Rosemount Avenue, West Byfleet, Surrey, KT14 6LB
 www.mbhstd.com t: 01932 352 727 f: 01932 351 545

CLIENT



PROJECT
 FS2305 - PALMERS GREEN
 MORRISONS SUPERMARKET AND CAR PARK,
 ALDERMANS HILL,
 LONDON
 N13 4YD

DRAWING TITLE
 LV ENCLOSURE DETAILS

DRAWN BY	DATE	SCALE	PAPER SIZE
WG	05.03.2024	1:20/1:50	A1
CHECKED BY	DRAWING NUMBER	REV.	
RRB	14313-2503-24	-	