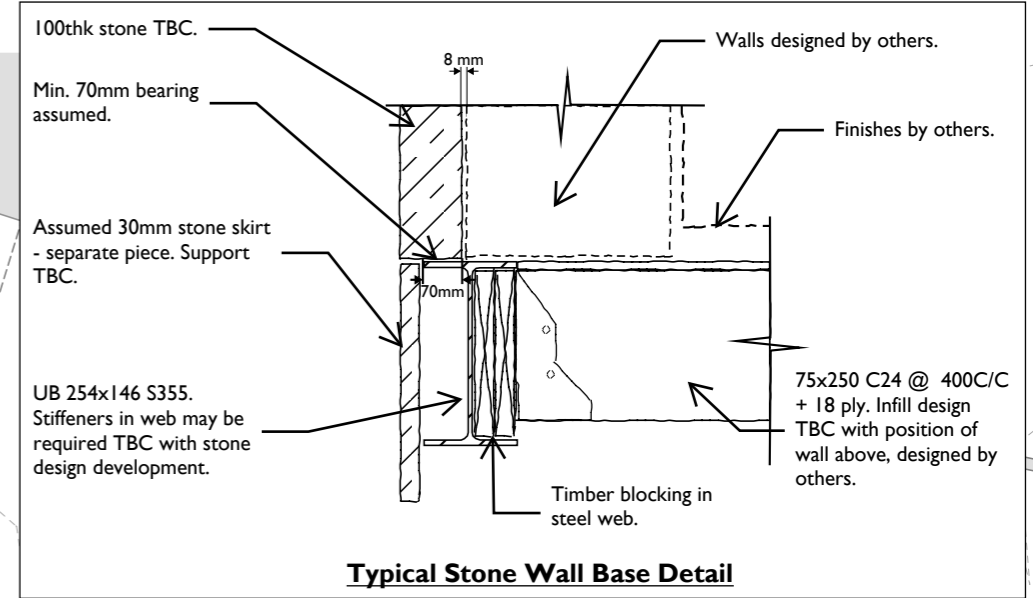


Tolerance between adjacent piles TBC with SI information.



Typical Stone Wall Base Detail

PC fence panels required to retain made ground build up, to be reviewed with SI information.

Pile positions are shown to allow for a 1m exclusion zone from the tree flare to the face of a pile. An additional 0.5m zone can be accommodated to allow for tolerance on site if tree roots are encountered.

Tolerance to adjacent listed wall to be reviewed with SI information.

KEY:	
● Assumed screw pile location - house	↘ Infill - house 75 x 250 C24 @ 400C/C + 18 PLY
● Assumed screw pile location - terrace Column stubs SHS 120x5 S355	↘ Infill - terrace 50 x 200 C24 @ 400C/C + 18 PLY
● Pile options for construction tolerance to avoid tree roots	● TX Tree to be retained
- - - Beam location - house UB 254x146 S355	○ 1m pile exclusion zone from tree flare
- - - Beam location - terrace SHS 120x5 S355	○ Additional 0.5m zone to give tolerance on site if tree roots are encountered

NOTES:

- Superstructure above ground level designed by others, loads assumed from P&M drawing 25.01.23.
- All pile locations subject to results of site investigations and screw pile testing.
- Infill is a suspended timber floor. Minimum 150mm ventilation void required. Damp proofing strategy to be carefully detailed by others.
- Steel to be galvanised.
- Stone design to be developed with others.

WEBB YATES ENGINEERS

020 3696 1550
london@webbyates.com
www.webbyates.com

Drawing No. J5129-S-SK-0001			
Project 56a Church Hill			Status S3
Drawing Title Ground Floor & Foundation Plan			
Date MAR 24	Drawn by RH	Scale NTS	Revision 03