

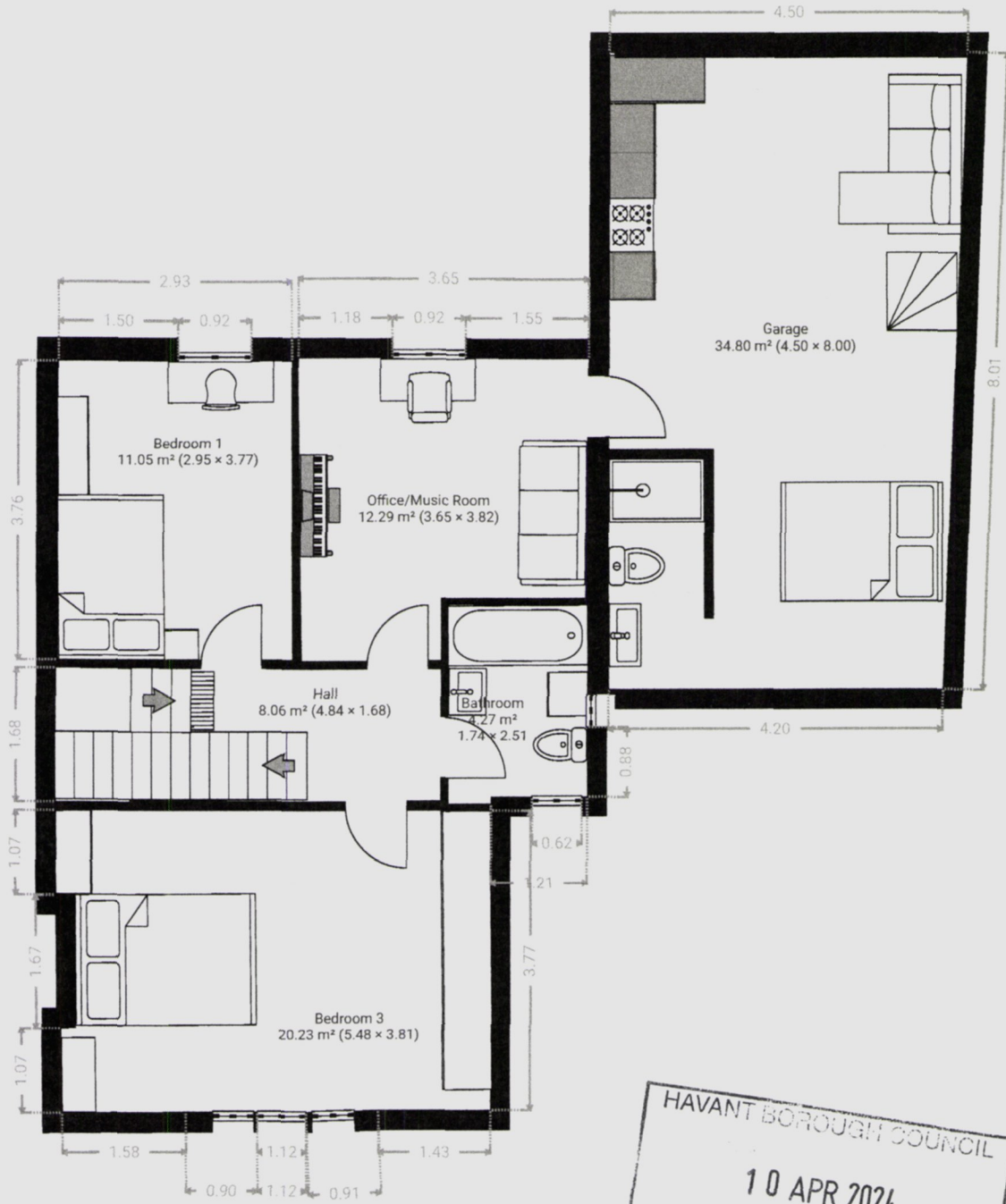
Hayling Duckyard

Park Road, PO11 0HT Hayling Island
TOTAL AREA: 507.43 m² · LIVING AREA: 404.33 m² · FLOORS: 6 · ROOMS: 36



▼ 1st Floor

TOTAL AREA: 90.65 m² · LIVING AREA: 55.85 m² · ROOMS: 6



HAVANT BOROUGH COUNCIL
10 APR 2024
RECEIVED

THIS FLOORPLAN IS PROVIDED WITHOUT WARRANTY OF ANY KIND. SENSOPIA DISCLAIMS ANY WARRANTY INCLUDING, WITHOUT LIMITATION, SATISFACTORY QUALITY OR ACCURACY OF DIMENSIONS.

