



OLD MANSE
Haddington, EH41 4HP

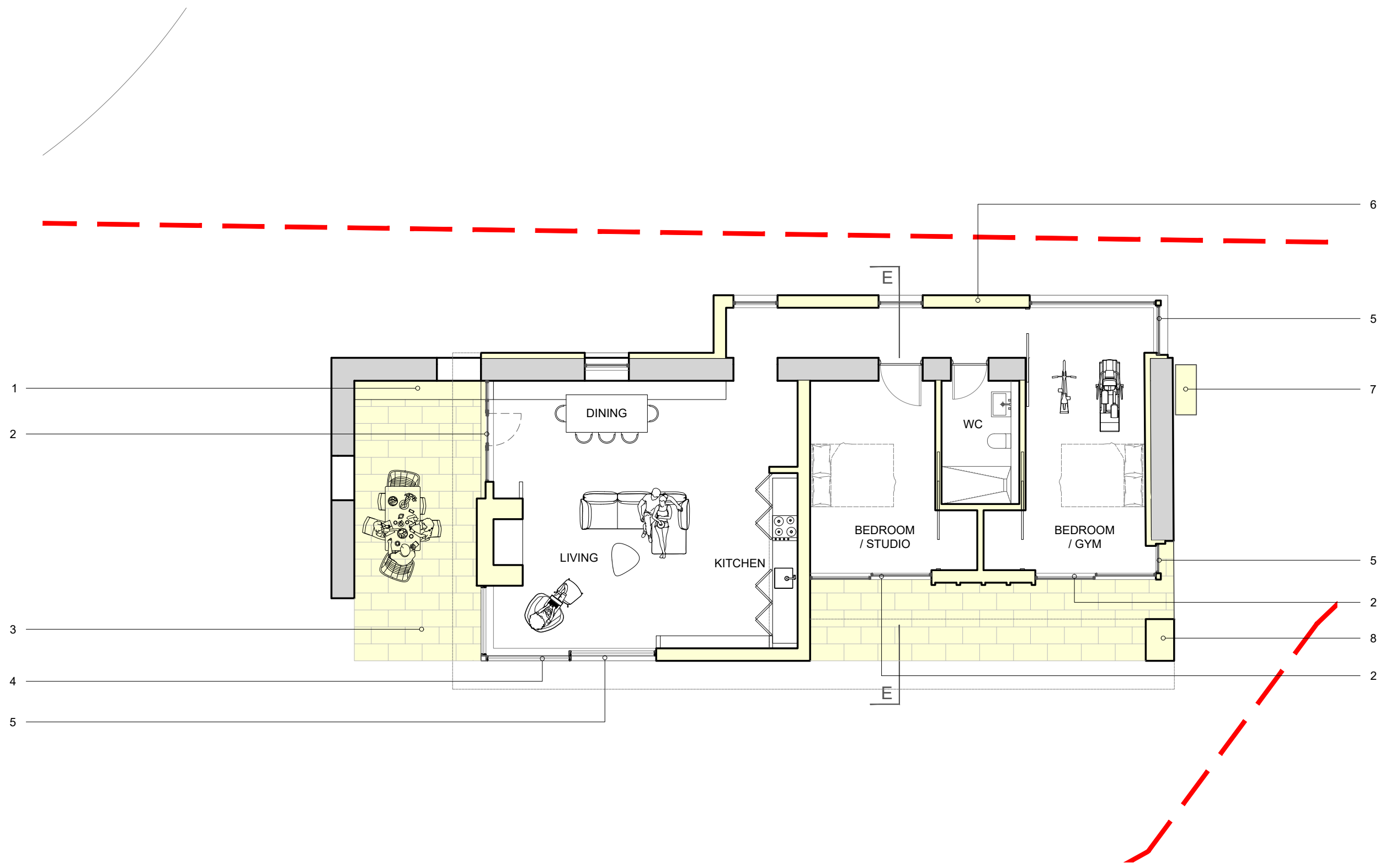
DRAWING KEY

- EXISTING
- NEW WORK
- BOUNDARY
- DEMO

REVISIONS

DRAWING NOTES

1. Timber bench
2. Light grey aluminium door
3. Light grey natural stone paving abutting building
4. Light grey aluminium bi parting corner glazing
5. Light grey aluminium window
6. Lime render finish
7. 7kW Vaillant aroTHERM plus - Air source heat pump
8. New light coloured brick - Petersen Tegel K-91
9. Single ply membrane roof - dark grey
10. New light grey aluminium window
11. New timber roof edge
12. Oak vertical cladding
13. Open pergola roof



PROPOSED CHURCH GROUND PLAN

STAGE | PLANNING

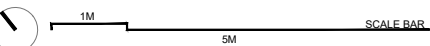
CLIENT | OLGA WHAMOND

DRAWING NUMBER | 23141(PL)0208

DRAWN BY | JG

JONES ROBBINS TOBIN

architecture | interiors | products
info@jonesrobbins.com
www.jonesrobbins.com



1:100 / A3