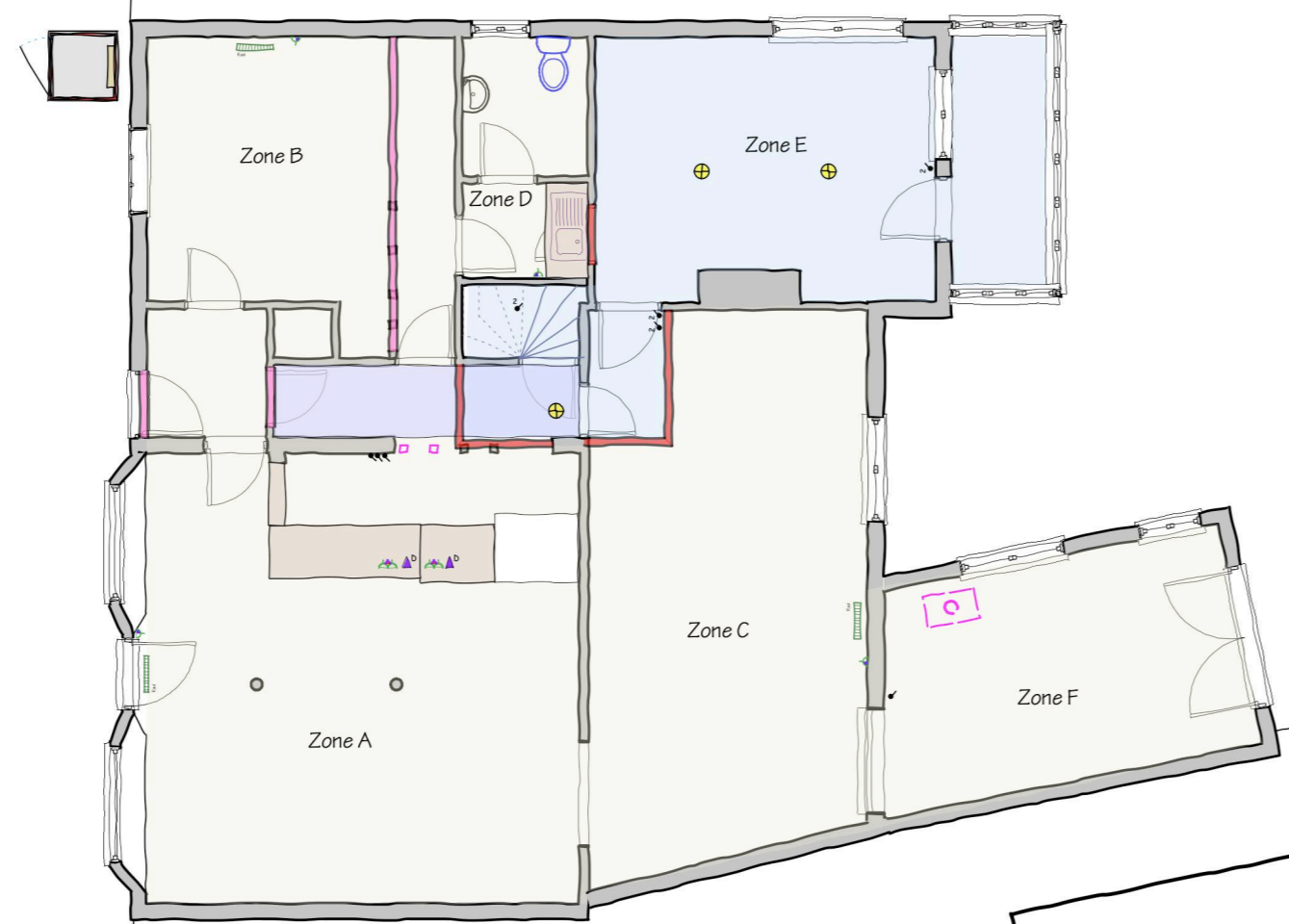


Posts

77



The Old Bakery

Lea Cottage

Rev:	Date:	Revision:

t • r • a • c • i • n • g • h • o • u • s • e
a • r • c • h • i • t • e • c • t • s

2 Rose Cottage • North Green • Pulham Sy Mary • IP21 4XX

Tel: M:07799112008 e-mail:robmf@zoo.co.uk

Project: Alterations to Hoxne Post Office
Low Street, Hoxne IP21 5AR

Drawing: Proposed Block Plan

Scale: 1:100 @ A1 or 1:200 @ A3 Date: April 2024

Job Ref: HPO - 200 Dwg No. Rev:

This drawing is copyright. This drawing must not be scaled. Before commencing any work the contractor must set out and check all dimensions.

