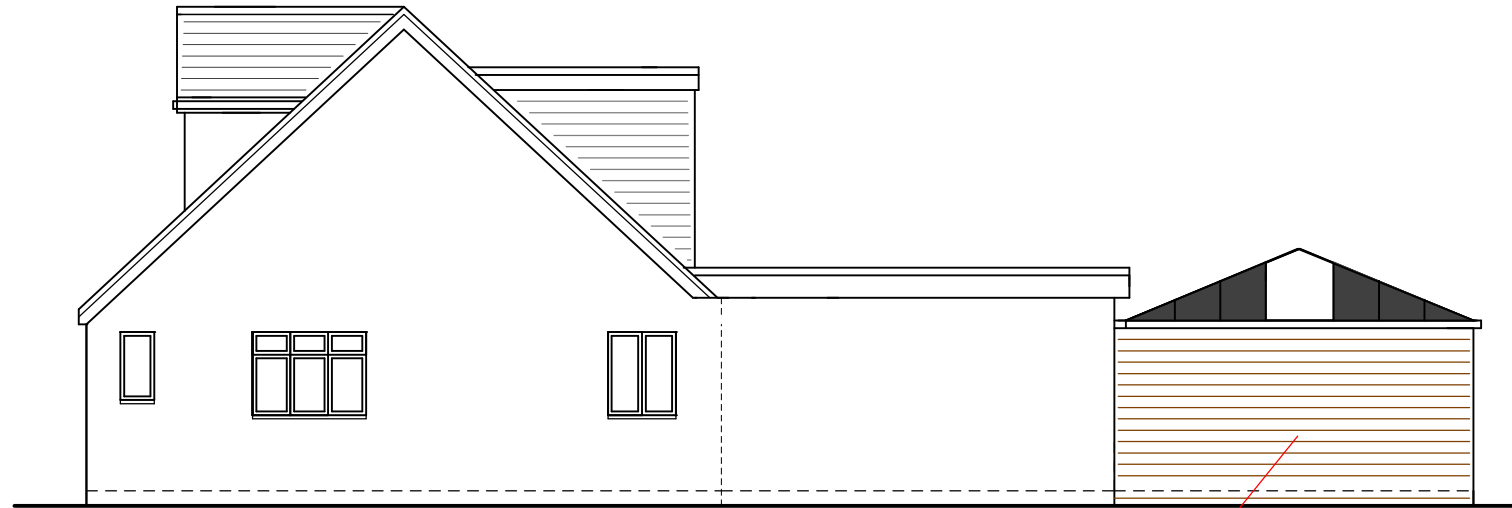


front (northeast) elevation



right side (northwest) elevation

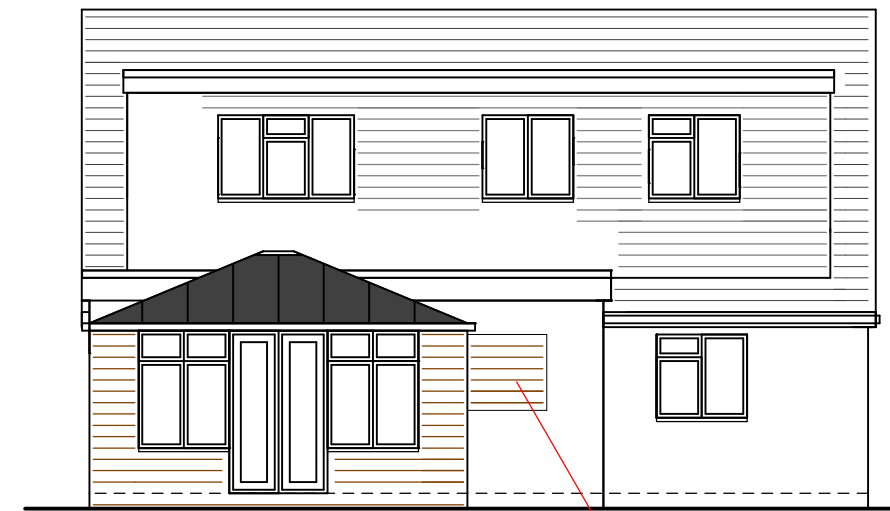
2.45
3.40

full wall facing brick



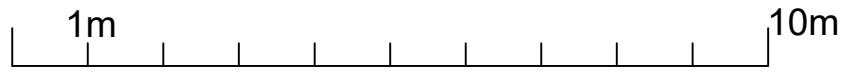
left (southeast) elevation

anthracite grey upvc frames



rear (southeast) elevation

block up kitchen window



PROPOSED REAR CONSERVATORY
 width 5m, projection 4.75m, hgt to eaves 2.45m,
 hgt to ridge 3.4m
 external brickwork to be facing brick, frames anthracite
 grey upvc, glazing clear, roof material anthracite grey
 composite insulated roof panels with 2x glass panels

drainage to existing gully, boundary treatments to
 remain same

