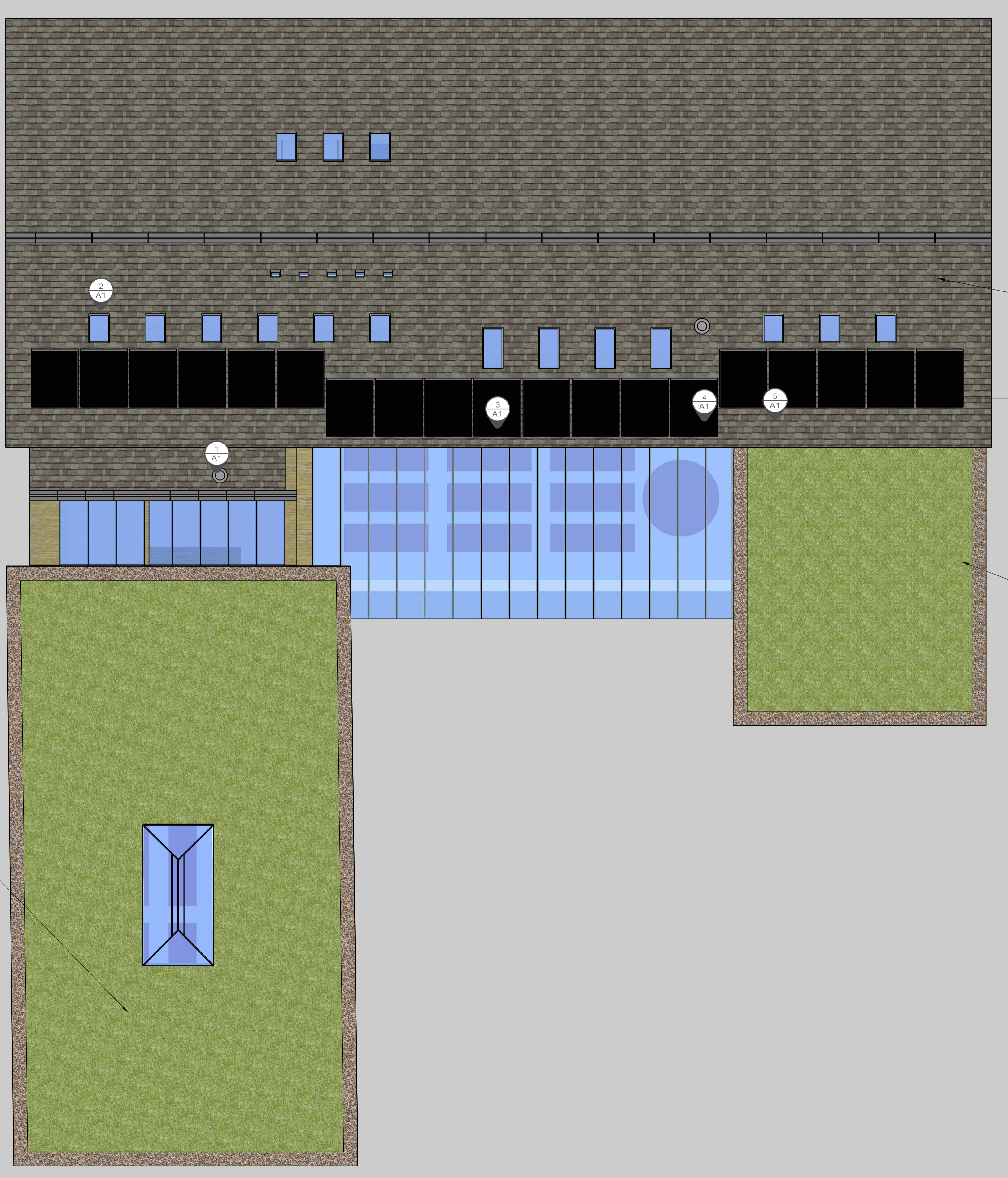







Roof Plan

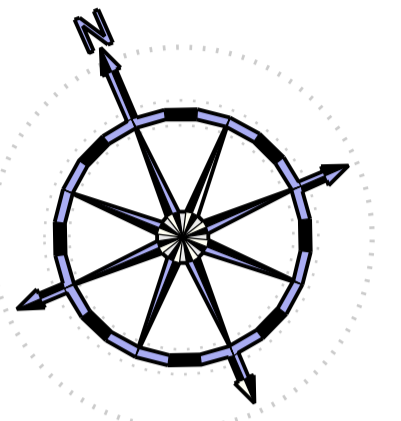


• Warm Roof Construction
Finished with synthetic slate
Roof tiles.



• Grass roof over EPDM Membrane using
local native grasses.

Item	Note
	Vent for the Plant and Utility Room
	Velux style double glazed windows with opening size 780mm x 380mm
	Velux style double glazed windows with opening size 1180mm x 380mm
	Chimney for wood-burning stove
	Velux style double glazed windows with opening size 780mm x 380mm

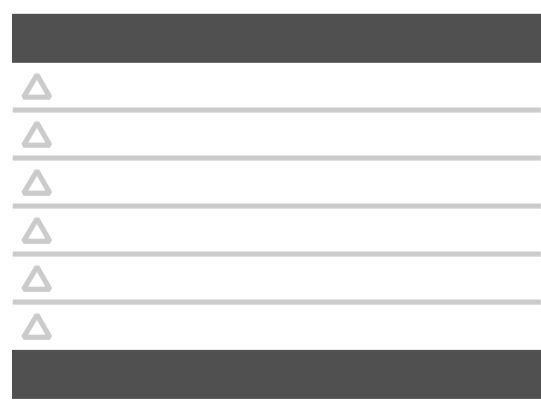


House & Retreat Centre

DRAWN BY:
Douglas Noble

DOCUMENT
DATE: 11/11/2022
SCALE: 1:50

Ground at
South Lodge
Grangemuir
KY10 2GR



A1.06

Roof Plan

Scale: 1:50

0m 1m 2m 4m 6m 10m 14m 20m

