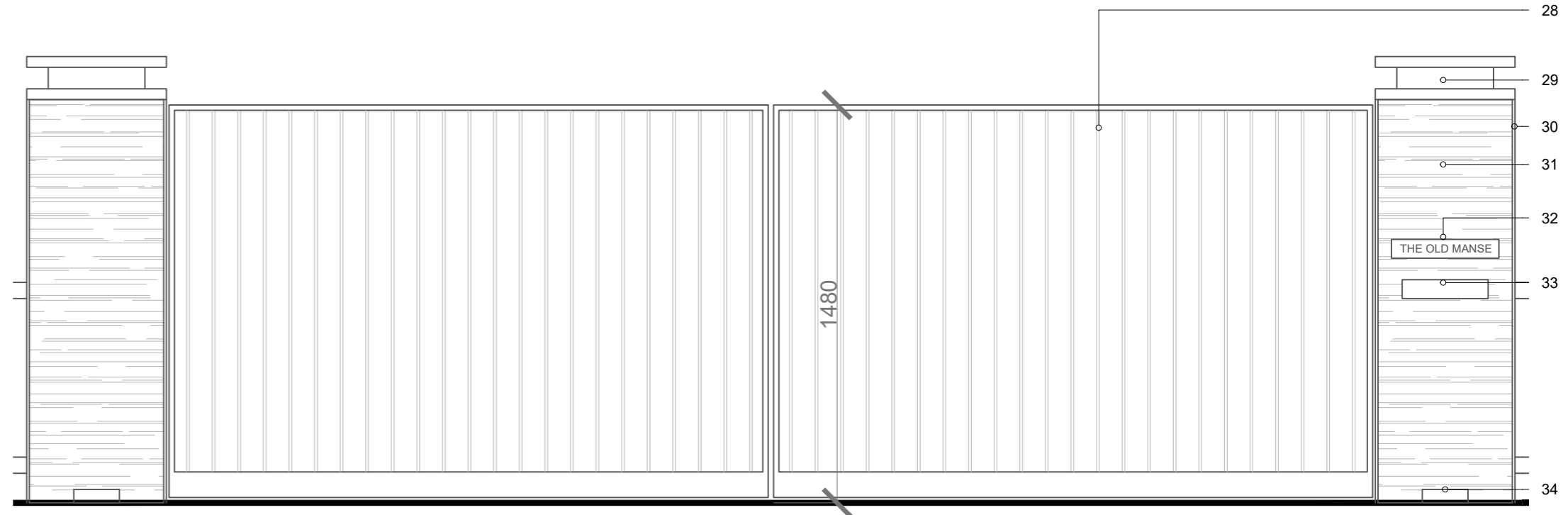


# ENTRANCE GATE

Due to the poor condition of the existing entrance gate, part of the proposal is to install a new double motor controlled gate to replace it.

The adjacent fencing will also be dark metal vertical bars.

The existing gate posts are circa 23cm, 165cm high. Existing fence 145cm high.



PROPOSED ENTRANCE GATE

## DRAWING NOTES

1. Area of new slate roof, to reuse existing Slate where possible.
2. Dark grey aluminum door
3. New double glazed white painted wooden window to match existing.
4. Dark grey aluminum window.
5. New area of render to match existing.
6. New area of stone reusing existing stone where possible.
7. Dark grey aluminum roof light.
8. Light grey natural stone paving.
9. Oak vertical cladding
10. Single ply membrane roof - Dark Grey
11. Retained stone to be cut with edging.
12. Oak timber pivot door.
13. Dark grey powder coated steel edging.
14. Integrated letter box.
15. Planter.
16. Shadow gap.
17. Single ply membrane roof - Dark Grey
18. New light grey aluminum window.
19. New light coloured brick - Petersen Tegal K-91
20. Light grey aluminum window
21. New timber roof edge.
22. Lime render finish
23. Light grey aluminum Bi parting corner glazing.
24. Timber bench.
25. Air source heat pump.
26. Light grey aluminum door.
27. Repositioned tree canopy.
28. Metal bar gate.
29. Outdoor cap light.
30. Dark grey powder coated steel edging.
31. Stacked slate pillar.
32. House sign - brushed brass.
33. Letter box - brushed brass.
34. Uplight.



EXISTING ENTRANCE GATE TO BE REMOVED