

DESIGN & ACCESS STATEMENT

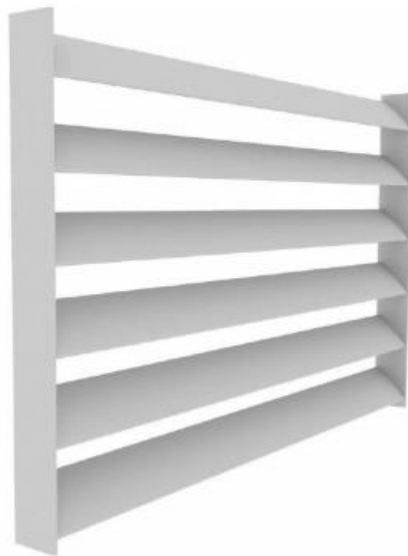
283 High Street, Acton, London, W3 9QU

- 1.1 This Statement has been prepared to accompany a retrospective planning application at 283 High Street, Acton which relates to the replacement of the previous timber balcony decking and brise soleil features. These have been replaced with aluminium alternatives in order to comply with current fire safety standards.
- 1.2 The replacement materials have been chosen to imitate the colour and appearance of the previous materials and accordingly, there would be no material alteration to the appearance of the building.

Brise Soleil

- 1.3 The brise soleil have been replaced with Zefyr AERO X 170 elliptical profile fins. Details of which are illustrated below.

Louvred Solar Shading



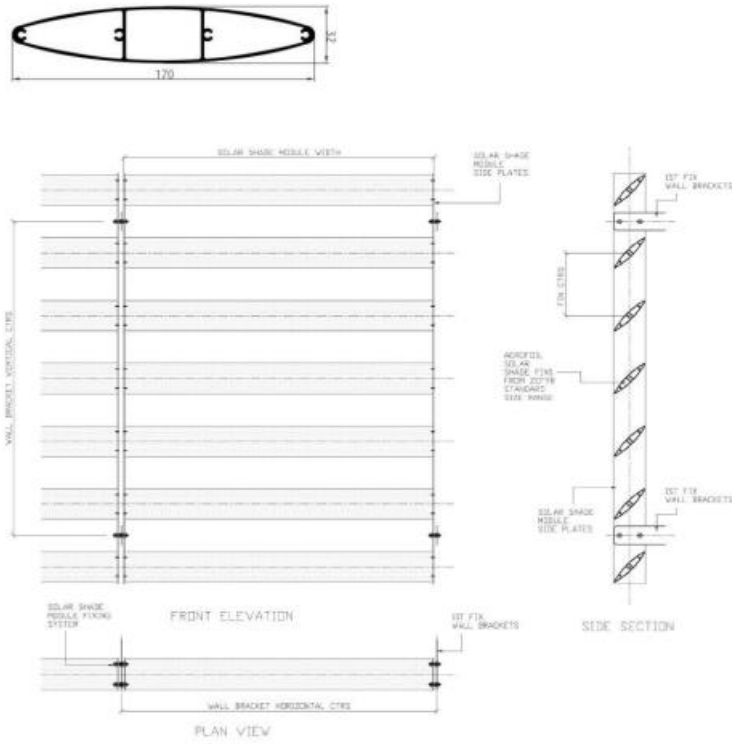
Zefyr's louvred solar shading system is an architectural horizontal blind produced from extruded and precision-formed aluminium.

It has a clean crisp architectural design with a comprehensive framing system to suit all applications.

- Components : Side Arms and Solar Fins
- Blades : Aero-X 170
- Centres : 214 mm
- Material : Aluminium
- Finish : Mill finish, PPC, Anodized

Louvred Solar Shading

Typical Detail



Balcony Decking

- 1.4 The existing timber balcony decking has been replaced with Zefyr Deck X 145. These would have the same widths as the existing planks (145mm) and are grey in colour.