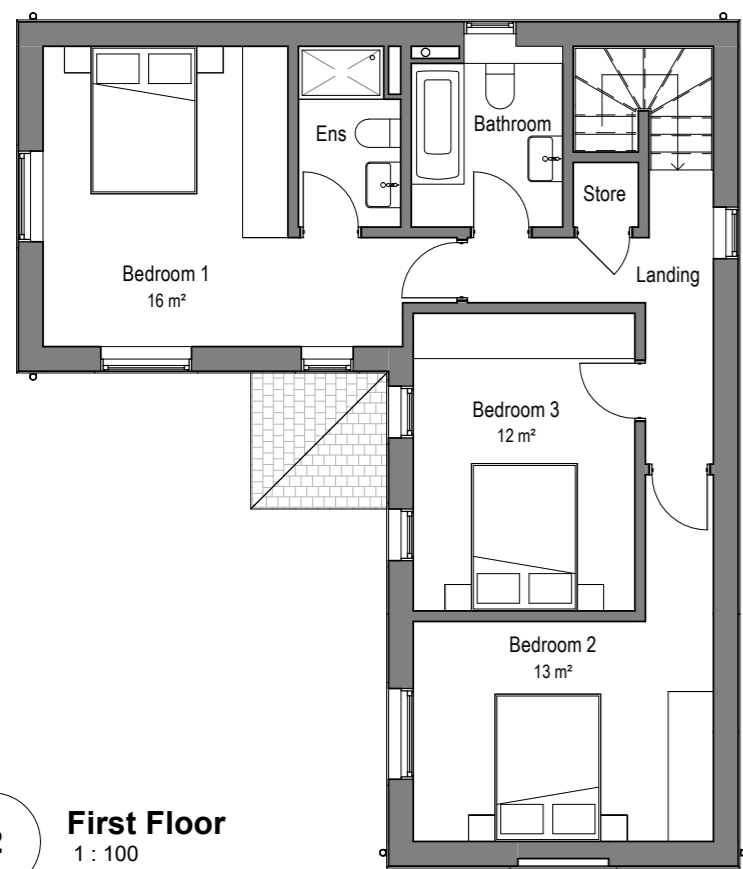
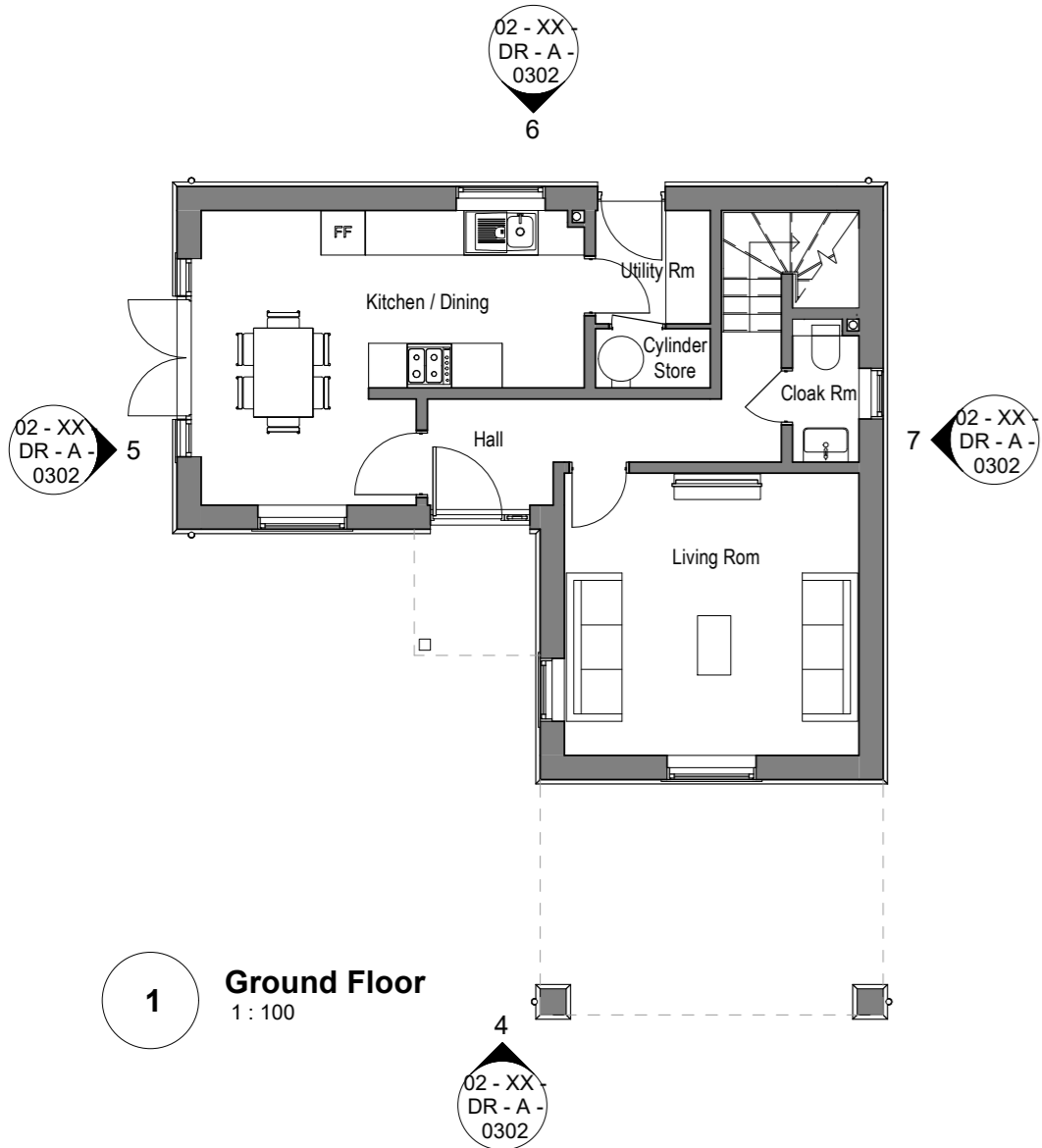


3 Roof Plan
1: 100



2 First Floor
1: 100



1 Ground Floor
1: 100

Materials key:



1 Slate roof tiles, grey



2 Red brick



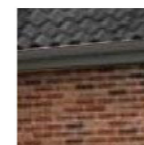
3 Composite front door - Aluminium-timber frame, anthracite colour. Side vision panel.



4 Composite side/ rear door - Aluminium-timber frame, anthracite colour. Vision panel



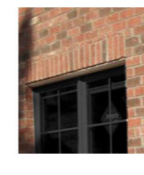
5 Rainwater Goods - Aluminum anthracite colour



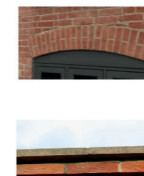
6 Timber fascias and soffits - Anthracite colour



7 Brick dentil course to gables/ dormers - Red brick



8 Soldier course to windows/ doors lintels - Red brick



9 Brick arch to patio doors - Red brick



10 Brick dentil course to the eaves - Red brick



11 Stone window cill



12 Brick band course



13 Composite sash windows - Aluminium-timber frame, colour anthracite



14 Composite patio double door with side windows - Aluminium-timber frame, colour anthracite



15 Wooden pitched porch



4 South Elevation
1: 100



5 West Elevation
1: 100



6 North Elevation
1: 100



7 East Elevation
1: 100

NOTES

Do not scale from this drawing electronically or manually, use written dimensions only.

All dimensions are in millimeters unless stated otherwise.

This drawing is produced for use in this project only and may not be used for any other purpose. Lanproservices Ltd. accept no liability for the use of this drawing other than the purpose for which it was intended in connection with this project as recorded on the title fields 'Purpose for Issue' and 'Drawing Status Code'.

This drawing may not be reproduced in any form without prior written agreement of Lanproservices Ltd.

© Crown copyright and database rights 2023.

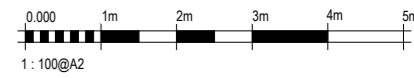
Ordnance Survey Licence Number 0100031673

CDM 2015

The Construction (Design and Management) Regulations 2015 (CDM 2015) makes a distinction between domestic and commercial clients and outlines the duties you, as client, have under Health and Safety Law (HSE).

These duties can be found at <http://www.hse.gov.uk/construction/cdm/2015/responsibilities.htm>

It is your responsibility as client to make yourself aware of your role within CDM 2015 and act accordingly.



Rev.	Description	Date	Drawn By	Checked By
P01	Issue For Information	07.03.24	TO	DO
P02	Issue For Information	19.03.24	TO	DO
P03	Issue For Information	26.03.24	TO	DO
P04	Issue For Information	28.03.24	TO	DO

PURPOSE OF ISSUE
IN - For Information

DRAWING STATUS
S2 - For Information

PROJECT TITLE
High Street Leiston

CLIENT
Western House Developments

DRAWING TITLE
Floor Plans and Elevations - Plot 2

SCALE	DATE	DRAWN BY	CHECKED BY	APPROVED BY
1: 100@A2	23.10.2023	TO	DO	-

DRAWING NUMBER	PROJECT NO / DRAWING FIELDS	REVISION
4348 - LAN - 02 - XX - DR - A - 0302		P04



Architecture | Masterplanning & Urban Design | Landscape Architecture
Norwich Office: Brettingham House, 98 Pottergate, Norwich, NR2 1EQ
Tel: 01603 631 319
www.lanproservices.co.uk

28/03/2024 20:01:11 Y:\11_Proyekty\4348 - High Street Leiston\Drawings\01 BIM\1 RIBA ST 0-301\WP\01 Plot Model\01 Central Model\4348 - High Street Leiston - Unit 2.rvt