

PROPOSED SITE PLAN LEGEND	
	Permeable grass areas
	Tarmac driveway
	Tarmac Highway
	Paving
	22mm under sandstone paving (slabs, colour to be confirmed)
	10mm/20mm loose compacted laid stone gravel (slabs & paths)
	10mm/20mm loose compacted laid stone gravel (slabs & paths)
	Existing masonry boundary/garden walls
	Proposed masonry boundary/garden walls
	Proposed hedgerow
	Existing fencing
	Existing site levels
	Proposed site levels
	Site Boundary
	Ecology enhancement/ mitigation - 1 x 2m access like (see ecology report for further details)
	Ecology enhancement/ mitigation - 1 x 3m access like (see ecology report for further details)
	Ecology enhancement/ mitigation - 1 x 4m access like (see ecology report for further details)
	Ecology enhancement/ mitigation - 1 x 5m access like (see ecology report for further details)
	Ecology enhancement/ mitigation - 1 x 6m access like (see ecology report for further details)
	Ecology enhancement/ mitigation - 1 x 7m access like (see ecology report for further details)
	Ecology enhancement/ mitigation - 1 x 8m access like (see ecology report for further details)
	Ecology enhancement/ mitigation - 1 x 9m access like (see ecology report for further details)
	Ecology enhancement/ mitigation - 1 x 10m access like (see ecology report for further details)
	Ecology enhancement/ mitigation - 1 x 11m access like (see ecology report for further details)
	Ecology enhancement/ mitigation - 1 x 12m access like (see ecology report for further details)
	Ecology enhancement/ mitigation - 1 x 13m access like (see ecology report for further details)
	Ecology enhancement/ mitigation - 1 x 14m access like (see ecology report for further details)
	Ecology enhancement/ mitigation - 1 x 15m access like (see ecology report for further details)
	Ecology enhancement/ mitigation - 1 x 16m access like (see ecology report for further details)
	Ecology enhancement/ mitigation - 1 x 17m access like (see ecology report for further details)
	Ecology enhancement/ mitigation - 1 x 18m access like (see ecology report for further details)
	Ecology enhancement/ mitigation - 1 x 19m access like (see ecology report for further details)
	Ecology enhancement/ mitigation - 1 x 20m access like (see ecology report for further details)
	Ecology enhancement/ mitigation - 1 x 21m access like (see ecology report for further details)
	Ecology enhancement/ mitigation - 1 x 22m access like (see ecology report for further details)
	Ecology enhancement/ mitigation - 1 x 23m access like (see ecology report for further details)
	Ecology enhancement/ mitigation - 1 x 24m access like (see ecology report for further details)
	Ecology enhancement/ mitigation - 1 x 25m access like (see ecology report for further details)
	Ecology enhancement/ mitigation - 1 x 26m access like (see ecology report for further details)
	Ecology enhancement/ mitigation - 1 x 27m access like (see ecology report for further details)
	Ecology enhancement/ mitigation - 1 x 28m access like (see ecology report for further details)
	Ecology enhancement/ mitigation - 1 x 29m access like (see ecology report for further details)
	Ecology enhancement/ mitigation - 1 x 30m access like (see ecology report for further details)
	Ecology enhancement/ mitigation - 1 x 31m access like (see ecology report for further details)
	Ecology enhancement/ mitigation - 1 x 32m access like (see ecology report for further details)
	Ecology enhancement/ mitigation - 1 x 33m access like (see ecology report for further details)
	Ecology enhancement/ mitigation - 1 x 34m access like (see ecology report for further details)
	Ecology enhancement/ mitigation - 1 x 35m access like (see ecology report for further details)
	Ecology enhancement/ mitigation - 1 x 36m access like (see ecology report for further details)
	Ecology enhancement/ mitigation - 1 x 37m access like (see ecology report for further details)
	Ecology enhancement/ mitigation - 1 x 38m access like (see ecology report for further details)
	Ecology enhancement/ mitigation - 1 x 39m access like (see ecology report for further details)
	Ecology enhancement/ mitigation - 1 x 40m access like (see ecology report for further details)
	Ecology enhancement/ mitigation - 1 x 41m access like (see ecology report for further details)
	Ecology enhancement/ mitigation - 1 x 42m access like (see ecology report for further details)
	Ecology enhancement/ mitigation - 1 x 43m access like (see ecology report for further details)
	Ecology enhancement/ mitigation - 1 x 44m access like (see ecology report for further details)
	Ecology enhancement/ mitigation - 1 x 45m access like (see ecology report for further details)
	Ecology enhancement/ mitigation - 1 x 46m access like (see ecology report for further details)
	Ecology enhancement/ mitigation - 1 x 47m access like (see ecology report for further details)
	Ecology enhancement/ mitigation - 1 x 48m access like (see ecology report for further details)
	Ecology enhancement/ mitigation - 1 x 49m access like (see ecology report for further details)
	Ecology enhancement/ mitigation - 1 x 50m access like (see ecology report for further details)
	Ecology enhancement/ mitigation - 1 x 51m access like (see ecology report for further details)
	Ecology enhancement/ mitigation - 1 x 52m access like (see ecology report for further details)
	Ecology enhancement/ mitigation - 1 x 53m access like (see ecology report for further details)
	Ecology enhancement/ mitigation - 1 x 54m access like (see ecology report for further details)
	Ecology enhancement/ mitigation - 1 x 55m access like (see ecology report for further details)
	Ecology enhancement/ mitigation - 1 x 56m access like (see ecology report for further details)
	Ecology enhancement/ mitigation - 1 x 57m access like (see ecology report for further details)
	Ecology enhancement/ mitigation - 1 x 58m access like (see ecology report for further details)
	Ecology enhancement/ mitigation - 1 x 59m access like (see ecology report for further details)
	Ecology enhancement/ mitigation - 1 x 60m access like (see ecology report for further details)
	Ecology enhancement/ mitigation - 1 x 61m access like (see ecology report for further details)
	Ecology enhancement/ mitigation - 1 x 62m access like (see ecology report for further details)
	Ecology enhancement/ mitigation - 1 x 63m access like (see ecology report for further details)
	Ecology enhancement/ mitigation - 1 x 64m access like (see ecology report for further details)
	Ecology enhancement/ mitigation - 1 x 65m access like (see ecology report for further details)
	Ecology enhancement/ mitigation - 1 x 66m access like (see ecology report for further details)
	Ecology enhancement/ mitigation - 1 x 67m access like (see ecology report for further details)
	Ecology enhancement/ mitigation - 1 x 68m access like (see ecology report for further details)
	Ecology enhancement/ mitigation - 1 x 69m access like (see ecology report for further details)
	Ecology enhancement/ mitigation - 1 x 70m access like (see ecology report for further details)
	Ecology enhancement/ mitigation - 1 x 71m access like (see ecology report for further details)
	Ecology enhancement/ mitigation - 1 x 72m access like (see ecology report for further details)
	Ecology enhancement/ mitigation - 1 x 73m access like (see ecology report for further details)
	Ecology enhancement/ mitigation - 1 x 74m access like (see ecology report for further details)
	Ecology enhancement/ mitigation - 1 x 75m access like (see ecology report for further details)
	Ecology enhancement/ mitigation - 1 x 76m access like (see ecology report for further details)
	Ecology enhancement/ mitigation - 1 x 77m access like (see ecology report for further details)
	Ecology enhancement/ mitigation - 1 x 78m access like (see ecology report for further details)
	Ecology enhancement/ mitigation - 1 x 79m access like (see ecology report for further details)
	Ecology enhancement/ mitigation - 1 x 80m access like (see ecology report for further details)
	Ecology enhancement/ mitigation - 1 x 81m access like (see ecology report for further details)
	Ecology enhancement/ mitigation - 1 x 82m access like (see ecology report for further details)
	Ecology enhancement/ mitigation - 1 x 83m access like (see ecology report for further details)
	Ecology enhancement/ mitigation - 1 x 84m access like (see ecology report for further details)
	Ecology enhancement/ mitigation - 1 x 85m access like (see ecology report for further details)
	Ecology enhancement/ mitigation - 1 x 86m access like (see ecology report for further details)
	Ecology enhancement/ mitigation - 1 x 87m access like (see ecology report for further details)
	Ecology enhancement/ mitigation - 1 x 88m access like (see ecology report for further details)
	Ecology enhancement/ mitigation - 1 x 89m access like (see ecology report for further details)
	Ecology enhancement/ mitigation - 1 x 90m access like (see ecology report for further details)
	Ecology enhancement/ mitigation - 1 x 91m access like (see ecology report for further details)
	Ecology enhancement/ mitigation - 1 x 92m access like (see ecology report for further details)
	Ecology enhancement/ mitigation - 1 x 93m access like (see ecology report for further details)
	Ecology enhancement/ mitigation - 1 x 94m access like (see ecology report for further details)
	Ecology enhancement/ mitigation - 1 x 95m access like (see ecology report for further details)
	Ecology enhancement/ mitigation - 1 x 96m access like (see ecology report for further details)
	Ecology enhancement/ mitigation - 1 x 97m access like (see ecology report for further details)
	Ecology enhancement/ mitigation - 1 x 98m access like (see ecology report for further details)
	Ecology enhancement/ mitigation - 1 x 99m access like (see ecology report for further details)
	Ecology enhancement/ mitigation - 1 x 100m access like (see ecology report for further details)

PROPOSED TREE LEGEND	
	Tree root protection zones
	Trees to be removed
	Existing trees to be retained
	Proposed ornamental garden trees, exact specification to be confirmed

SITE PLAN
 Scale 1:200



MIXED SHRUBS
 To be supplied and planted in accordance with the National Plant Specification and HTA recommendations.

HAWTHORN HEDGEROW PLANTING

All hedgerow planting should be carried out in accordance with BS4428:1989. Code of practice for general landscape operations. Hedgerow shrubs should either be notch planted or trench planted. Hedge trenches should be dug to a minimum depth of 400mm and width of 600mm, with the plants put into the ground at the same depth at which they had been previously grown in the nursery. All plants need to be well heeled in after planting and watered in during dry weather. If hedging plants is supplied as a bare root specimen, it is important to make sure the roots do not dry out. It is advisable to keep them under a moist cloth or a bucket of reater during planting. Hedgers should only be planted between November and March, while plants are still dormant. Avoid planting in very cold or wet weather.

Where hedgerow trees are to be included, these should be spaced at least 30m apart to prevent them overshadowing the hedge. To establish trees, they can be planted in the line of the new hedge along with the hedge plants, but use tree shelters to allow their identification during maintenance.

PLANTING SPECIFICATION

Hedges to be planted in two, staggered rows at a density of not less than 5 hedge plants per meter, with approximately 450mm between plants in the same row, and 300-400mm between rows. The interplant whips / transplants should be planted within this pattern in groups of 2-3.

PROTECTION

New hedge to be protected from wild grazing animals. Where double fence applicable, the fences must be a minimum width of 2 meters apart. Ered fence using treated wooden posts with galvanised stock netting and wire, to a height of 1.4m. Protect hedgerow from rodent damage with spiral tree guards or rabbit netting, which can be removed once the plants are well established (approx. 3-5 years).

WEED CONTROL

Clear area of 1 metre across line of hedge of all vegetation in line with the new hedge. Provide a Mulch layer of composted bark or chippings over cleared area in order to suppress weed growth, mulch layer must be at least 100mm deep.

HEDGE TRIMMING

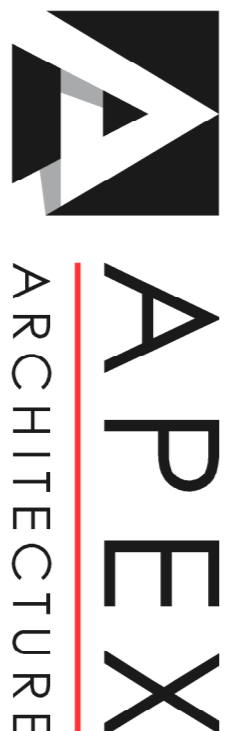
Hedges to be trimmed in January or February to avoid the destruction of birds' nests, and allow any berry crop to be used by wintering birds. Trim on a two or three year rotation, rather than annually.

Proposed Native Species - Rich Hedgerow to consist of a mixture of the following species to provide a good balance between cover and food for wildlife:
 Hawthorn, Blackthorn, Hazak, Dogwood, Spindle, Holly, Juniper, Guelder Rose, Wild Cherry, Bird Cherry, Crab Apple, & Field Maple.

Planting and management alternative strategy as follows:-
 A 2m strip will be cleared of vegetation and large stones before digging in an organic fertilizer.
 60 – 90cm whips will be planted in the autumn/winter, when the ground is row in a staggered double row approximately 50cm between rows and five plants per linear metre.

Whips will be provided with a heavy mulch and will be well-watered in.
 Whips will be protected by spiral Rabbit guards.
 If any plants die within five years of planting, they will be replaced on a like-for-like basis.
 Grazing animals will be excluded from the area.

The area will be fed annually with supplementary watering applied during the first two years. If required, and the hedge will be cut back by hand, maintaining a height of 2m, every two years in January or February.
 On-going gapping up will be undertaken as required.



The Site, 24 Croxson View Rd, Cheltenham, GL51 9LT
 Oak House, Aylburton, Gloucestershire, GL15 6ST
 Wiston Business Park, Monmouth, NP25 3SR
 01242 850 980
 01594 516161
 01600 800101

Client: M. M. Eynali
 Project: Birchenwood
 Binderley/Lara Staunton,
 Glos, GL16 8PE

Title: Proposed Site Plan			
Job No.	Drawing No.	Revision	Date
AA806DW	202	N/A	March 2024
Scale @A1	Issue Planning		