

SUBGRADE (CBR%)	ALL RESIDENTIAL ROADS	
	CAPPING (mm)	SUB-BASE (mm)
2%	300	MIN 300
2.5%		350
3%		300

- 2.19.1 CBR VALUES SHALL BE ROUNDED TO THE NEAREST VALUE IN THE TABLE.
- 2.19.2 COMPLETED AND COMPACTED GRANULAR CAPPING AND SUB-BASE MATERIALS SHOULD HAVE A MINIMUM LABORATORY CBR VALUE OF 15% AND 30% RESPECTIVELY.
- 2.19.3 FOR SOILS HAVING A CBR VALUE OF LESS THAN 2 REFER TO DMRB HD25/94.
- 2.19.4 CBR TESTS SHALL BE CARRIED OUT WITHIN 10 METRES OF THE END OF EACH ROAD AND AT FURTHER POINTS A MAXIMUM OF 10 METRES APART.
- 2.19.5 WHERE MORE THAN ONE CBR VALUE HAS BEEN MEASURED FOR ONE ROAD, THE LOWEST CBR VALUE SHALL BE USED TO DETERMINE A UNIFORM CAPPING/SUB-BASE CONSTRUCTION THICKNESS FOR THE WHOLE ROAD.
- 2.19.6 IN THE ABSENCE OF CBR TEST RESULTS, THE MAXIMUM THICKNESS OF CAPPING AND SUB-BASE SHALL APPLY, SUBJECT TO A SATISFACTORY INSPECTION OF THE SUB-GRADE BY THE COUNCIL.
- 2.19.7 ALL CBR TESTING IS TO BE INSPECTED BY THE COUNCIL REPRESENTATIVE ON THREE DAYS NOTICE FROM THE DEVELOPER, THE COUNCIL'S REPRESENTATIVE IS TO DETERMINE ALL CBR TEST LOCATIONS.
- NB. CBR RESULTS WILL NOT BE ACCEPTED IF THEY ARE NOT IN ACCORDANCE WITH THE ABOVE PROCEDURE.
- 2.19.8 CAPPING MATERIAL SHALL BE SELECTED GRANULAR MATERIAL 6.F.1 - 6.F.5. A5 DEFINED IN MCHW VOLUME 1 SERIES 800 (11/05).
- 2.19.9 GRANULAR SUB-BASE TYPE 1 SHALL COMPRISE OF CRUSHED ROCK CRUSHED SLAG, CRUSHED CONCRETE OR RECYCLED AGGREGATES AS DEFINED IN MCHW VOLUME 1 SERIES 800 (05/05).

- 6.1 GENERAL
- 6.1.1 APPLICATION OF SPECIFICATION
- 1 ANY CLAUSES IN THIS SPECIFICATION, WHICH RELATE TO WORK NOT REQUIRED, SHALL BE DEEMED NOT TO APPLY.

UNLESS STATED TO THE CONTRARY, ANY THICKNESS OF MATERIAL DESCRIBED MEANS THE THICKNESS AFTER FULL COMPACTION.

THE NOMENCLATURE ADOPTED FOR THIS SPECIFICATION IS THAT IN THE GLOSSARY OF HIGHWAY TERMS BS 6100 SUB-SECTION 2.4.1. ANY ABBREVIATIONS ARE IN ACCORDANCE WITH THE RECOMMENDATIONS GIVEN IN BS 5775 PART 0 1993.

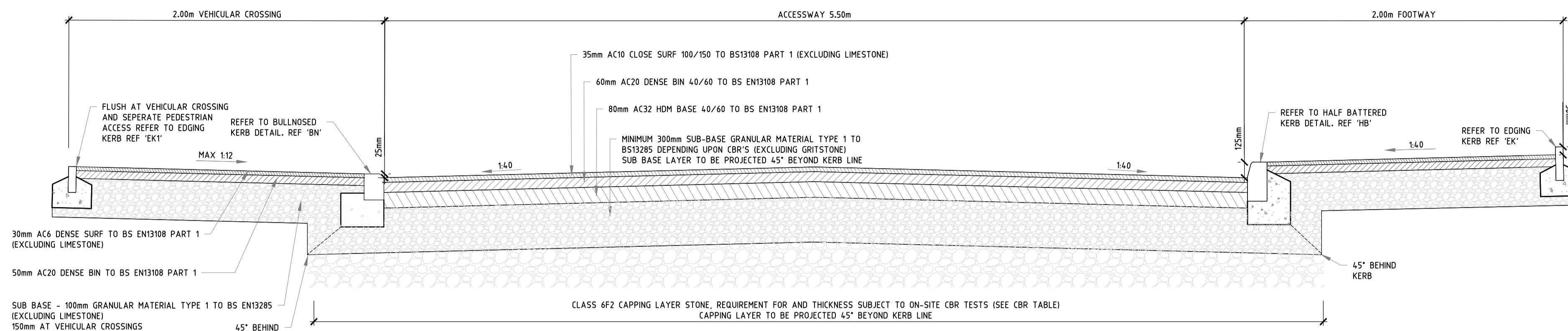
ANY REFERENCE TO THE DESIGN MANUAL FOR ROADS AND BRIDGES (DMRB) OR THE MANUAL OF CONTRACT DOCUMENTS FOR HIGHWAY WORKS (MCHW) WILL BE ACCOMPANIED BY THE REVISION DATE REFERENCE AT THE TIME OF PREPARATION OF THIS SPECIFICATION. NO ALTERNATIVE REVISIONS SHOULD BE USED WITHOUT PRIOR AGREEMENT WITH THE COUNCIL.

- 6.1.2 ALL MATERIALS WITHIN 450MM OF SURFACE SHALL BE NON-FROST SUSCEPTIBLE

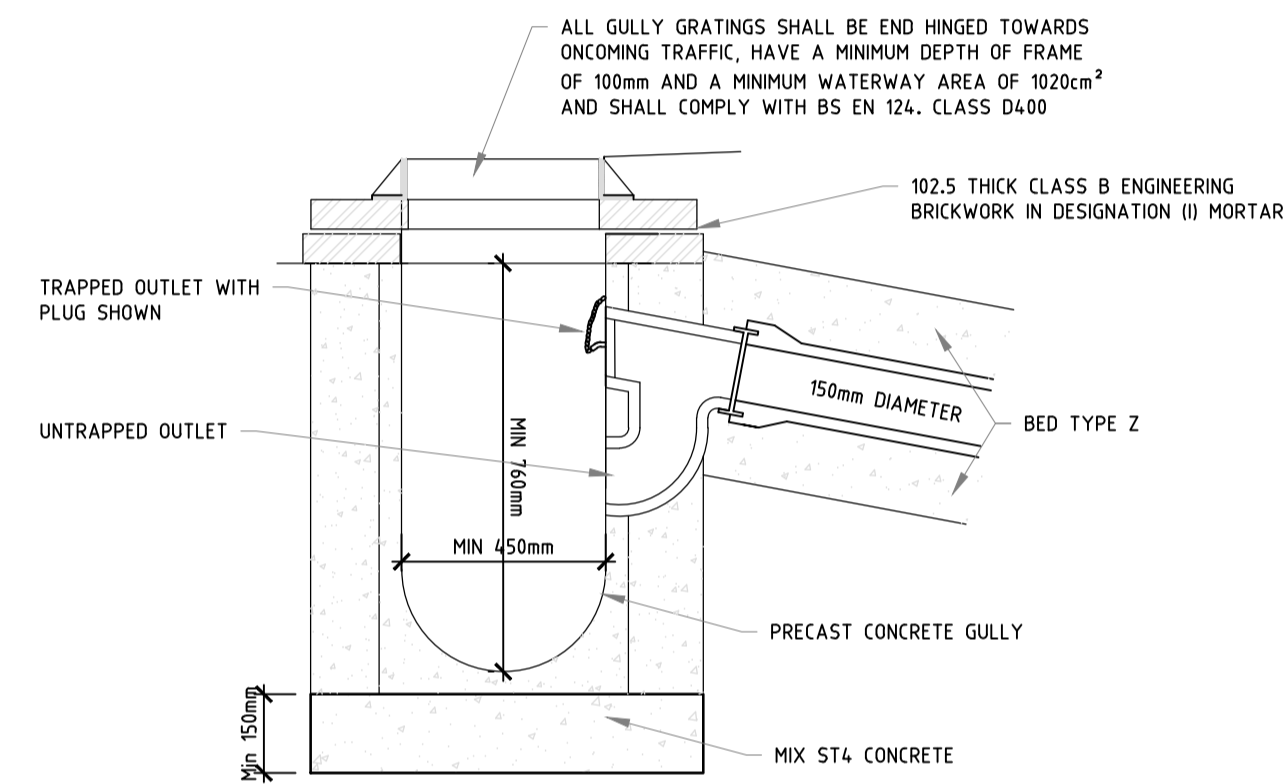
- 6.2.6 SELECTED FILL MATERIALS
- 1 SELECTED GRANULAR FILL MATERIAL TYPE 6.F.1 - 6.F.5
2 SELECTED GRANULAR MATERIAL TYPES 6.F.1 - 6.F.5 SHALL BE IN ACCORDANCE WITH MCHW VOLUME 1 SERIES 600 (11/05).

- 6.2.7 GRANULAR SUB-BASE TYPE 1
- 1 GRANULAR SUB-BASE MATERIAL TYPE 1 SHALL BE IN ACCORDANCE WITH MCHW VOLUME 1 SERIES 800 (05/05).

- 6.2.8 LAYING AND COMPACTION
- LAYING AND COMPACTION OF SELECTED FILL AND GRANULAR SUB-BASE SHALL BE IN ACCORDANCE WITH MCHW VOLUME 1 SERIES 600 CLAUSE 6.12 AND TABLE 6/4 (11/05) AND SERIES 800 CLAUSE 802 AND TABLE 8/4 (11/04).



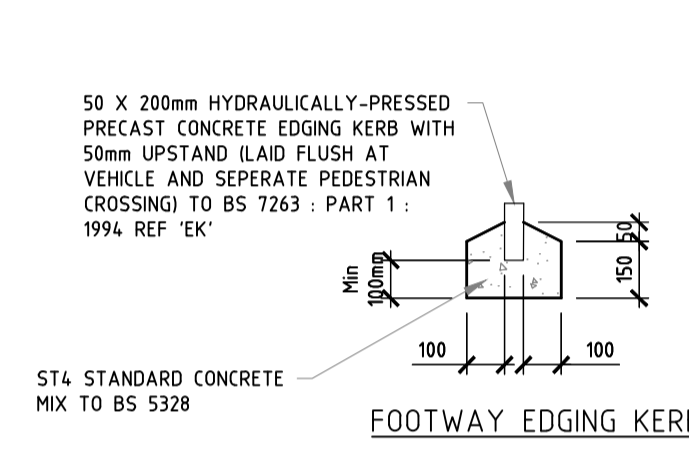
TYPICAL ACCESSWAY
CONSTRUCTION DETAIL



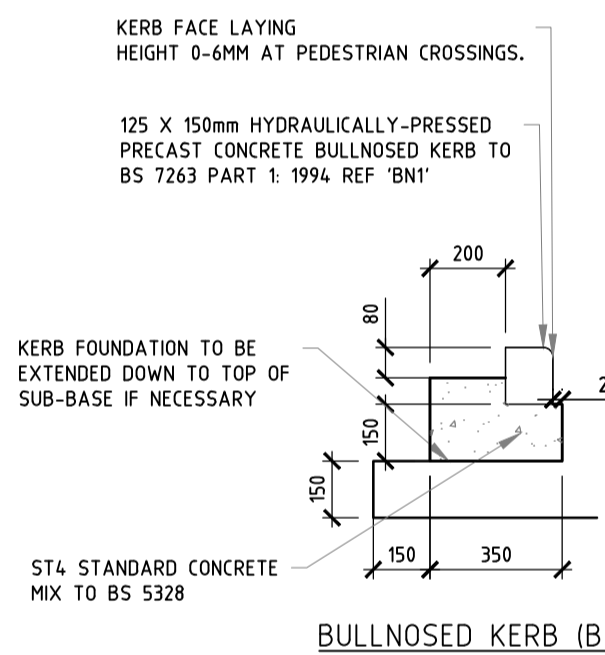
ROAD GULLY

NOTES:

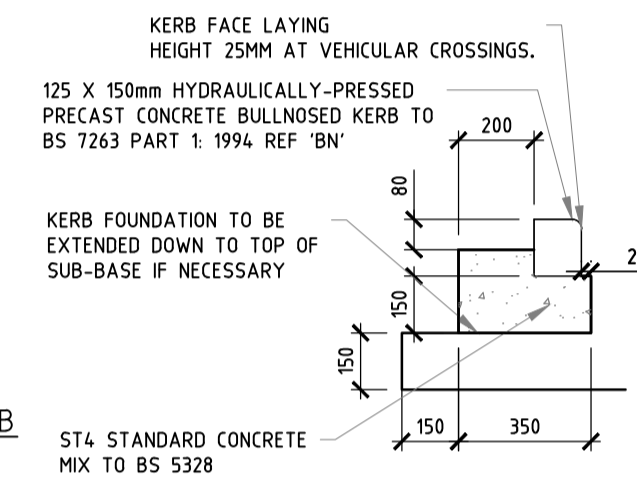
- GULLY COVER SLAB TO BE OF CONCRETE CLASS C25/20
- GULLY FRAMES SHALL BE TO EUROPEAN STANDARD EN 124 : PART 2 OR CLAYWARE TO BS 65 WITH CONCRETE FOUNDATIONS
- ALL GULLY GRANTINGS SHALL BE END HINGED TOWARDS THE ONCOMING TRAFFIC, HAVE A MINIMUM DEPTH OF FRAME OF 100MM AND A MINIMUM WATERWAY AREA OF 1020CM². CLAUSE 3.11, AND SHALL COMPLY WITH (BS) EN 124 CLASS D400
- ONLY CONCRETE GULLY POTS SHOULD BE USED AND THESE SHOULD CONFORM TO BS5911 PART 230. DIMENSIONS WILL BE 4500MM DIA X 760MM DEEP. CLAUSE 3.10(ii)
- GULLY CONNECTIONS SHALL BE 150 FLEXIBLE JOINTED PIPES WITH WATER TIGHT JOINTS
- GULLY CONNECTIONS SHALL BE SURROUNDED WITH CONCRETE FOR THE FULL LENGTH OF THE CONNECTION.
- ALL GULLY GRANTINGS SHALL BE END HINGED TOWARDS THE ONCOMING TRAFFIC, HAVE A MINIMUM DEPTH OF FRAME OF 100MM AND A MINIMUM WATERWAY AREA OF 1020CM². CLAUSE 3.11, AND SHALL COMPLY WITH (BS) EN 124 CLASS D400.
- ONLY CONCRETE GULLY POTS SHOULD BE USED AND THESE SHOULD CONFORM TO BS5911 PART 230. DIMENSIONS WILL BE 450MM DIA. X 760MM DEEP. CLAUSE 3.10 (ii)
- GULLY CONNECTIONS SHALL BE SURROUNDED WITH CONCRETE FOR THE FULL LENGTH OF THE CONNECTION.
- 'JET' AND PROVE ALL EXISTING GULLY CONNECTIONS THAT ARE TO BE RE-USED.
- EACH GULLY SHALL HAVE A SEPARATE/INDIVIDUAL CONNECTION TO THE SEWER.



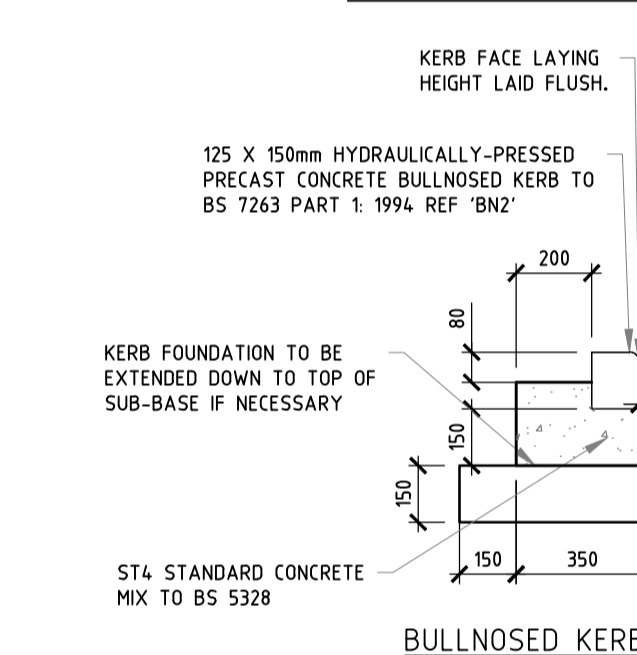
FOOTWAY EDGING KERB



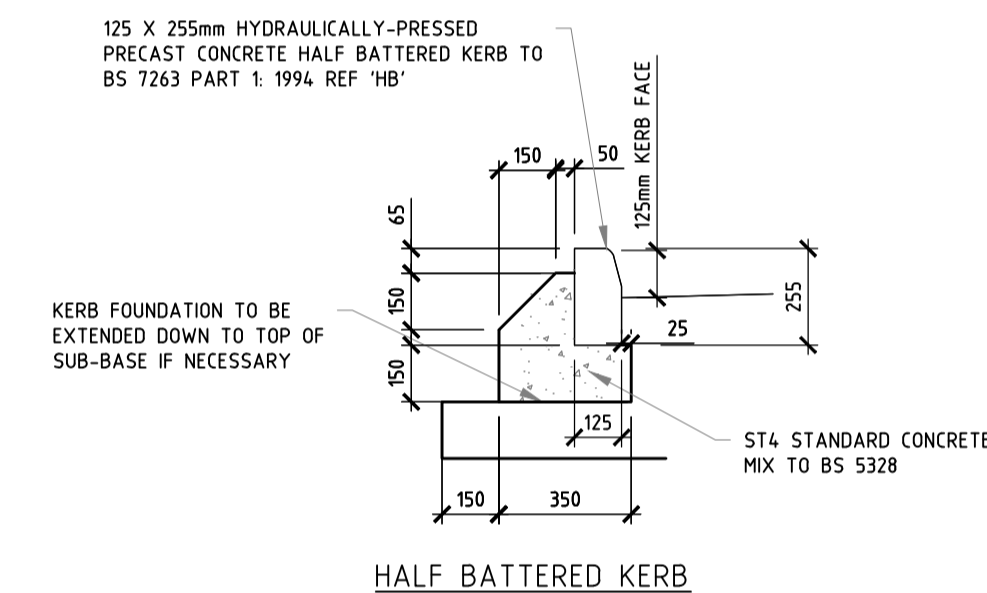
BULLNOSED KERB (BN1)



BULLNOSED KERB (BN)



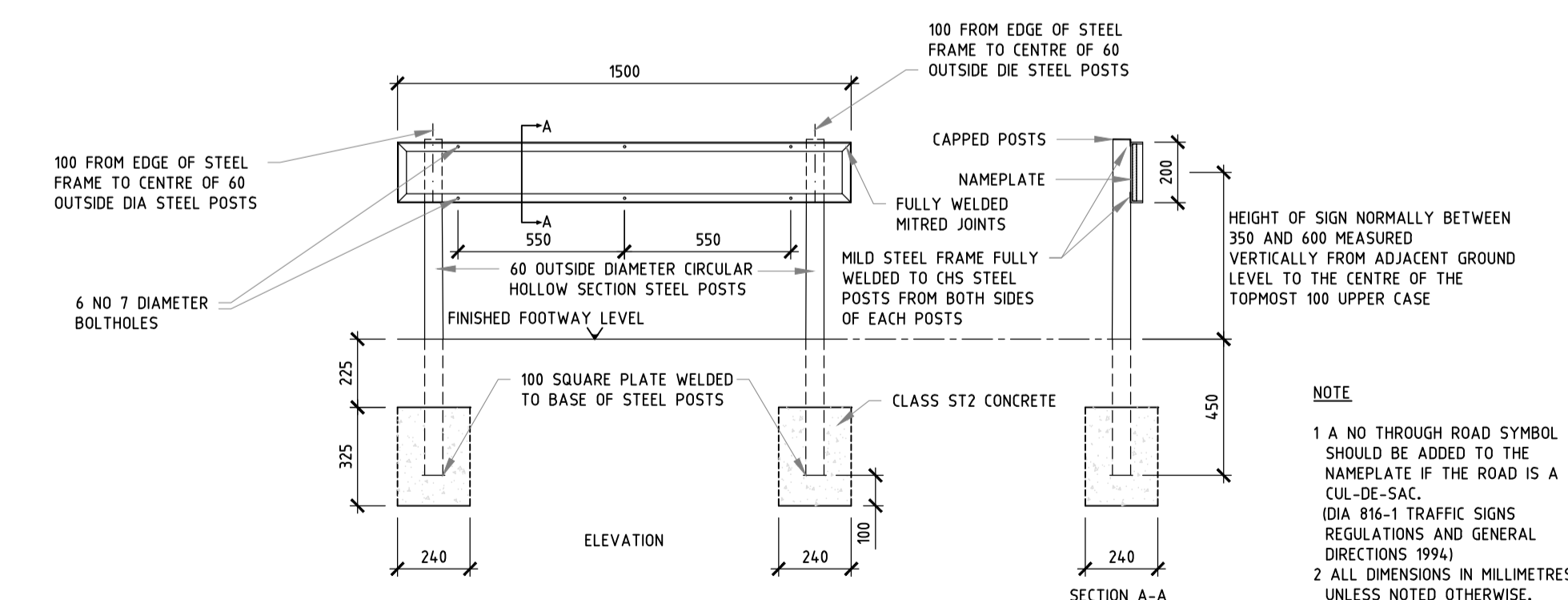
BULLNOSED KERB (BN2)



HALF BATTERED KERB

KERB NOTES:

- KERBS TO BE MANUFACTURED TO STANDARDS OF BS 7263 (PART 1)
- KERBS TO BE LAID ON 10MM 1:3 CEMENT / SAND MORTAR ON PREPARED FOUNDATION. ALTERNATIVELY, LAY KERBS ON WELL COMPACTED BED OF SEMI-DRY CONCRETE, MAX 35MM SLUMP, ALL IN ACCORDANCE WITH BS 7263 (PART 2)
- CONCRETE TO BE ST4



STREET NAMEPLATE CHARACTERISTICS

MATERIAL - ALUMINIUM
HEIGHT 200 X 450
LENGTH (VARIOUS) UP TO A MAXIMUM 1500 X 200 HIGH
HEIGHT OF LETTER 100. DISTANCE BETWEEN WORDS 50
START OF FIRST LETTER FROM EDGE, 25
THICKNESS OF NAMEPLATE NO LESS THAN 3
SCOTCHAL LETTERING USING VACUUM APPLICATOR AND 'SCOTCHLITE' HEAT LAMP

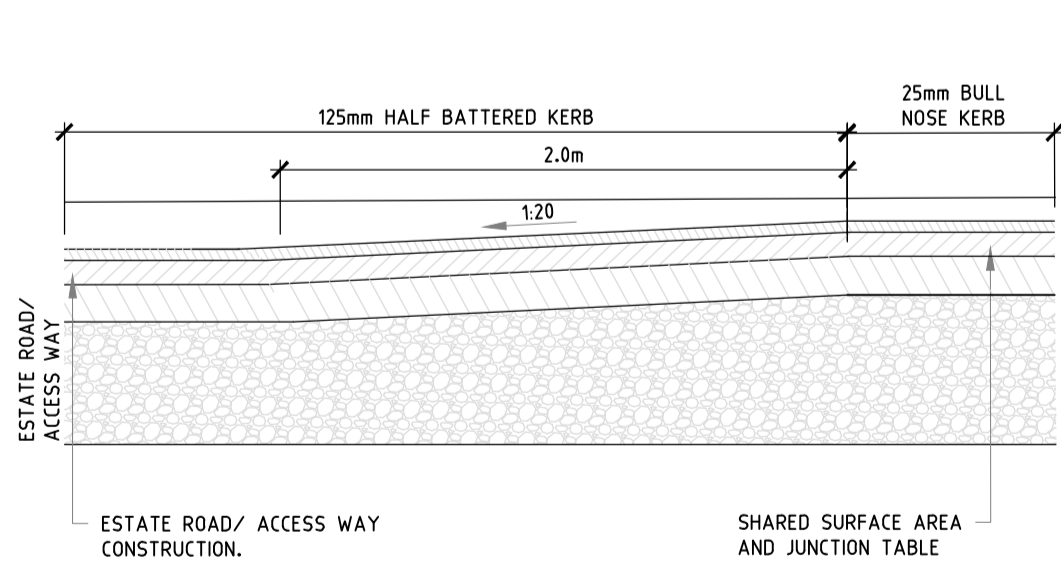
FRAMEWORK TO CARRY NAMEPLATE

THE WELDED STEEL FRAMEWORK MADE FROM 38 X 38 X 6 THICK STEEL ANGLES AND SUPPLIED BY THE CONTRACTOR SHALL BE PAINTED WITH 2 COATS OF PRIMER, 2 COATS OF UNDERCOAT AND 2 COAT OF GLOSS.

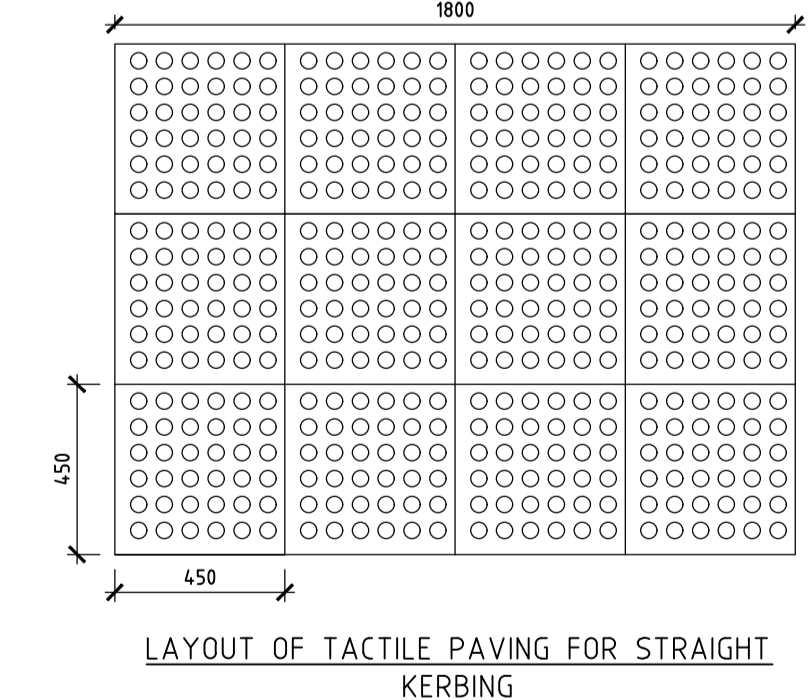
COLOURS OF POSTS AND SURROUND TO BE IN BLACK
LOCATIONS TO BE AGREED ON SITE

PLANTING DEPTH OF LEG SUPPORTS OF STEEL FRAMEWORK

300 BELOW FINISHED FOOTPATH LEVEL. CONCRETE SURROUND TO LEG SUPPORTS TO FINISH 75 BELOW FINISHED FOOTPATH LEVELS.



RAMP TO RAISED JUNCTION TABLES
AND RAISED SPEED TABLES



LAYOUT OF TACTILE PAVING FOR STRAIGHT
KERBING

FILENAME

PLOT DATE

0 mm 10 20 30 40 50

P01 07.11.23 PRELIMINARY - Issued for Information H.S./R.A.
Rev Date Description By Ctk

EDGE CONSULTING ENGINEERS
Manchester, UK
3rd Floor, Cornovon Court,
12 Blackfriars Street,
Manchester, M3 5BQ,
United Kingdom
T: +44 (0) 161 834 1938
E: manchester@edgece.com
www.edgece.com

The concepts + information contained in this document are the copyright of EDGE Consulting Engineers. Use or copying of this document in whole or in part without the written permission of EDGE Consulting Engineers constitutes an infringement of copyright.
DO NOT SCALE DRAWINGS. IF IN DOUBT, ASK!

Project Name:
LEE HALL WESTHOUGHTON

Client:
PERSIMMON HOMES

Designed: R.A. Drawn: H.S. Checked: R.A. Scale @ A1: 1:20

Drawing Title:
CONSTRUCTION DETAILS

Project No.:
19358

Drawing No.:
19358-EDGE-CC-XX-DR-C-3201 P01

PRELIMINARY NOT FOR CONSTRUCTION