

KEY	
B1	- 254x146x37 UB beam
B2	- 203x102x23 UB beam
B3	- 80x80x4 SHS hot-finished strut
C1	- 152x152x23 UC column
VB	- 80x80x4 SHS hot-finished strut
PS	- 440(l)x140(h)x100(w) Padstones by naylor - Span of open steel flooring type 41/100 with bars size 25x5mm by Barrett Steel all hot dip galvanised.

GENERAL NOTES

- DRAWINGS ARE TO BE READ IN CONJUNCTION WITH ALL RELEVANT SPECIFICATIONS, ENGINEERS, ARCHITECTS & SERVICES DRAWINGS, INCLUDING APPROVED BUILDERS WORK DRAWINGS. CONTRACTOR TO NOTIFY ENGINEER OF DISCREPANCIES BETWEEN STRUCTURAL DRAWINGS AND SPECIFICATIONS OR OTHER DRAWINGS.
- ALL DIMENSIONS ARE IN MILLIMETRES UNLESS NOTED OTHERWISE.
- DO NOT SCALE FROM THE DRAWINGS OR THE COMPUTER DIGITAL DATA, ONLY FIGURED DIMENSIONS ARE TO BE USED.
- THE CONTRACTOR SHALL BE RESPONSIBLE FOR THE DESIGN, FABRICATION, ERECTION AND REMOVAL OF ALL TEMPORARY WORKS AND SHALL PROVIDE ALL TEMPORARY BRACING AS NECESSARY TO MAINTAIN STRUCTURAL STABILITY DURING CONSTRUCTION.
- IF THE CONTRACTOR CONSIDERS THAT HE DOES NOT HAVE SUFFICIENT INFORMATION TO SAFELY COMPLETE THE WORKS DETAILED ON THIS DRAWING, HE SHOULD CONTACT THE ENGINEER.

CDM DESIGNER'S RISK ASSESSMENT

THOMASONS ASSUME THAT THE CONTRACTOR IS COMPETENT IN MATTERS OF HEALTH & SAFETY AND IS AWARE OF ALL THE NORMAL RISKS ASSOCIATED WITH CONSTRUCTION OF THE TYPE SHOWN ON THIS DRAWING. REMAINING UNUSUAL RISKS ARE :-

CONSTRUCTION

- DO NOT ALLOW ANY LOADING/STORAGE ON ROOF. UNKNOWN ROOF CONSTRUCTION - ASSUMED TO BE BRITTLE E.G. WOODWOOL SLAB.
- POTENTIAL DAMAGE TO EXISTING ROOF LIGHTS.
- REFER TO M&E DESIGN SPECIFICATIONS AND DRAWINGS, BY OTHERS, BEFORE RELOCATING/REMOVING EXISTING CABLES, SERVICES, PIPES, EQUIPMENT ETC.
- POTENTIAL RISK OF ASBESTOS, SEE ASBESTOS REPORT FOR DETAILS.
- LIFTING GEAR TO BE USED WHERE REQUIRED.

CHK'D

MAINTENANCE / CLEANING

N/A

KAM

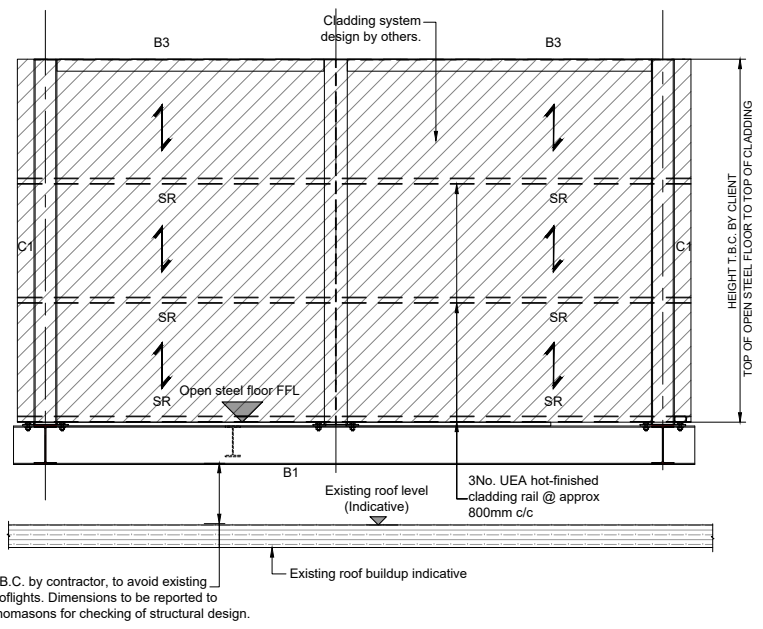
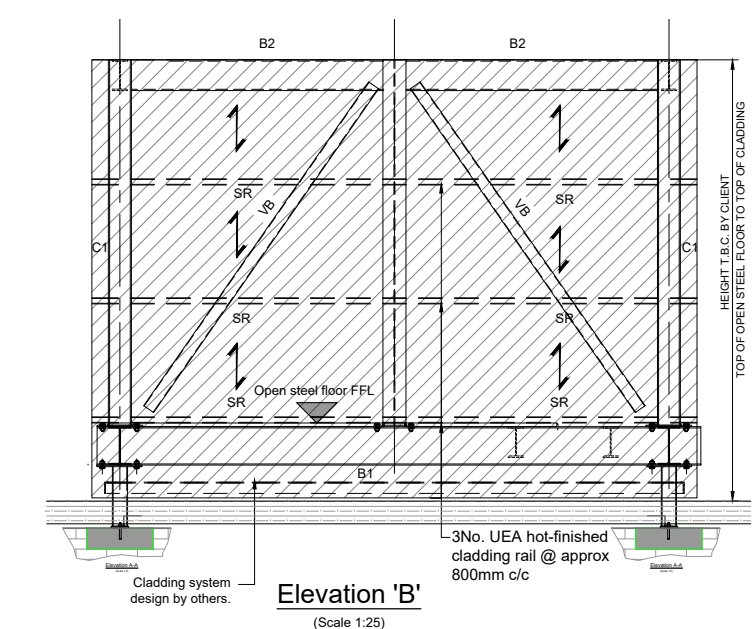
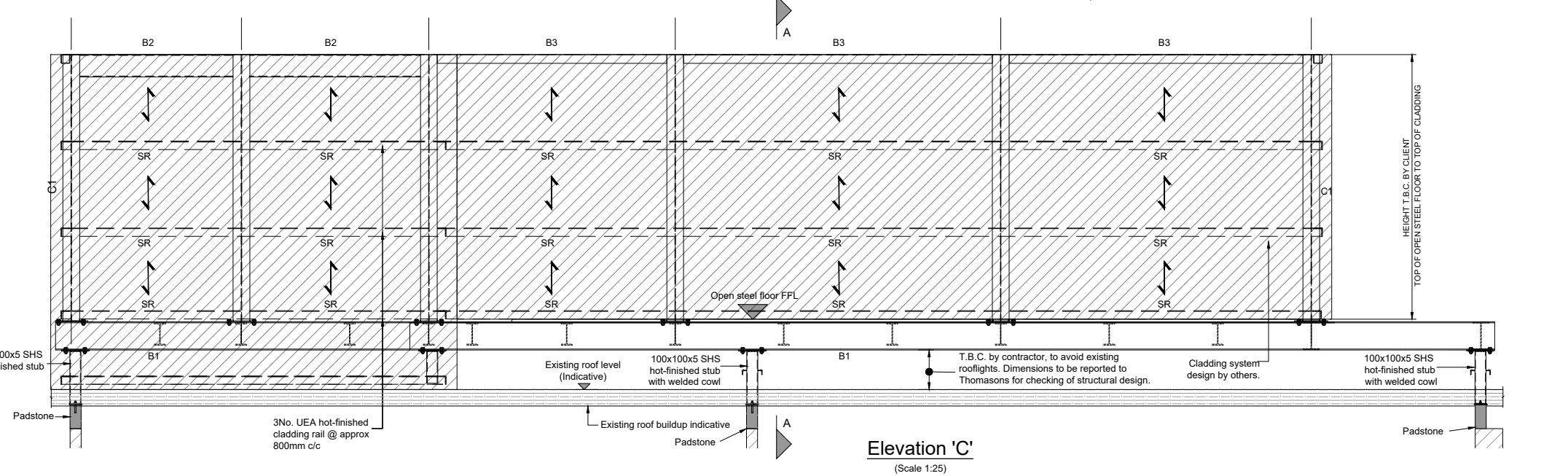
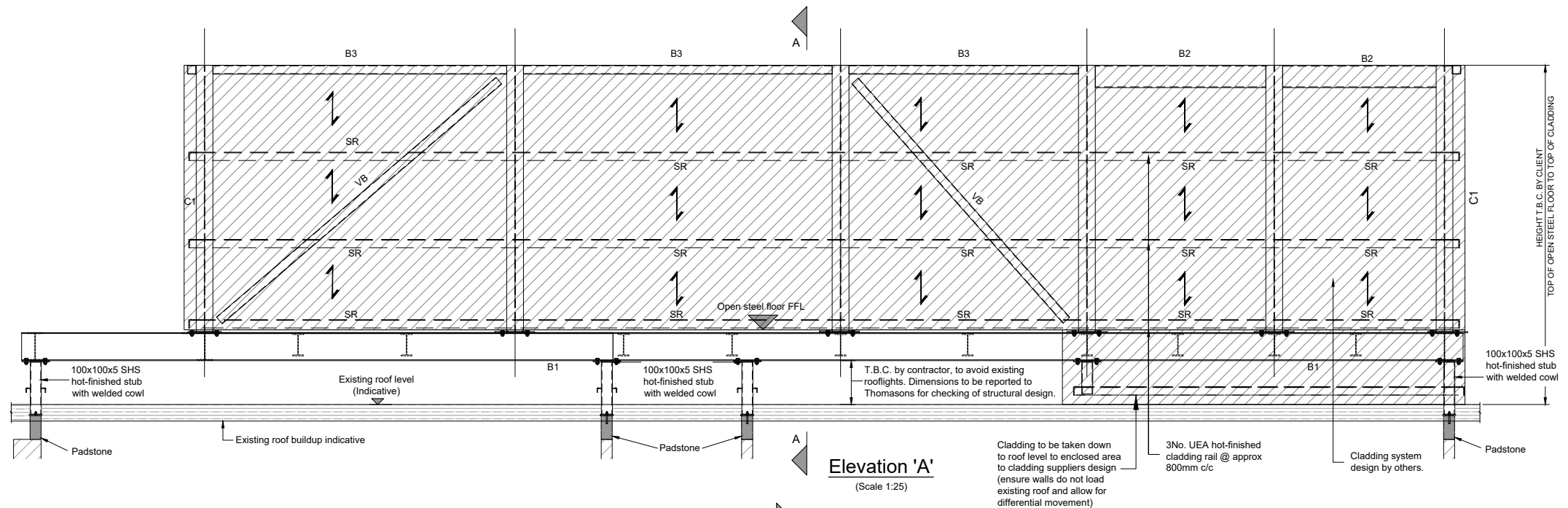
DECOMMISSIONING / DEMOLITION

- DO NOT ALLOW ANY LOADING/STORAGE ON ROOF. UNKNOWN ROOF CONSTRUCTION - ASSUMED TO BE BRITTLE E.G. WOODWOOL SLAB.
- POTENTIAL DAMAGE TO EXISTING ROOF LIGHTS.
- REFER TO M&E DESIGN SPECIFICATIONS AND DRAWINGS, BY OTHERS, BEFORE RELOCATING/REMOVING EXISTING CABLES, SERVICES, PIPES, EQUIPMENT ETC.
- POTENTIAL RISK OF ASBESTOS, SEE ASBESTOS REPORT FOR DETAILS.
- LIFTING GEAR TO BE USED WHERE REQUIRED.

KAM

NOTES

For steelwork notes refer to Dwg No 10416-001



Rev	Description	By	Date	Chkd
P2	PRELIMINARY ISSUE FOR COMMENT	GK	13.12.23	MP
P1	PRELIMINARY ISSUE FOR COMMENT	MAW	05.11.21	KAM



TRENT COURT, STOCKPORT

PROPOSED PLANT ENCLOSURE ELEVATIONS

Status: **PRELIMINARY**

Drawing No. **10416-002** Revision **P2**

Scale	Size	Drawn	Date	Chkd	Passed
1:50	A1	MAW	OCT 21	KAM	MB