

**GENERAL NOTES**

- DRAWINGS ARE TO BE READ IN CONJUNCTION WITH ALL RELEVANT SPECIFICATIONS, ENGINEERS, ARCHITECTS & SERVICES DRAWINGS, INCLUDING APPROVED BUILDERS WORK DRAWINGS. CONTRACTOR TO NOTIFY ENGINEER OF DISCREPANCIES BETWEEN STRUCTURAL DRAWINGS AND SPECIFICATIONS OR OTHER DRAWINGS.
- ALL DIMENSIONS ARE IN MILLIMETRES UNLESS NOTED OTHERWISE.
- DO NOT SCALE FROM THE DRAWINGS OR THE COMPUTER DIGITAL DATA, ONLY FIGURED DIMENSIONS ARE TO BE USED.
- THE CONTRACTOR SHALL BE RESPONSIBLE FOR THE DESIGN, FABRICATION, ERECTION AND REMOVAL OF ALL TEMPORARY WORKS AND SHALL PROVIDE ALL TEMPORARY BRACING AS NECESSARY TO MAINTAIN STRUCTURAL STABILITY DURING CONSTRUCTION.
- IF THE CONTRACTOR CONSIDERS THAT HE DOES NOT HAVE SUFFICIENT INFORMATION TO SAFELY COMPLETE THE WORKS DETAILED ON THIS DRAWING, HE SHOULD CONTACT THE ENGINEER.

**CDM DESIGNER'S RISK ASSESSMENT**

THOMASONS ASSUME THAT THE CONTRACTOR IS COMPETENT IN MATTERS OF HEALTH & SAFETY AND IS AWARE OF ALL THE NORMAL RISKS ASSOCIATED WITH CONSTRUCTION OF THE TYPE SHOWN ON THIS DRAWING. REMAINING UNUSUAL RISKS ARE :-

**CONSTRUCTION** CHK'D

- |  |     |
|--|-----|
| 1. DO NOT ALLOW ANY LOADING/STORAGE ON ROOF. UNKNOWN ROOF CONSTRUCTION - ASSUMED TO BE BRITTLE E.G. WOODWOOL SLAB.                         | KAM |
| 2. POTENTIAL DAMAGE TO EXISTING ROOF LIGHTS.   |     |
| 3. REFER TO M&E DESIGN SPECIFICATIONS AND DRAWINGS, BY OTHERS, BEFORE RELOCATING/REMOVING EXISTING CABLES, SERVICES, PIPES, EQUIPMENT ETC. |     |
| 4. POTENTIAL RISK OF ASBESTOS, SEE ASBESTOS REPORT FOR DETAILS.  |     |
| 5. LIFTING GEAR TO BE USED WHERE REQUIRED.   |     |

**MAINTENANCE / CLEANING**

N/A KAM

**DECOMMISSIONING / DEMOLITION**

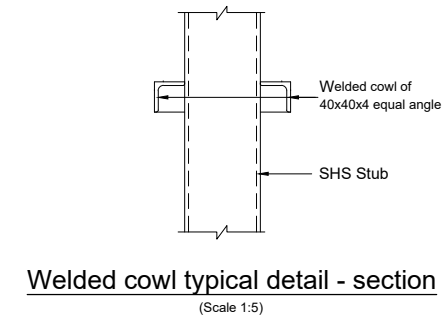
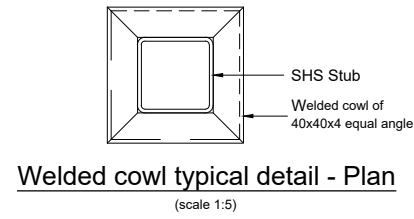
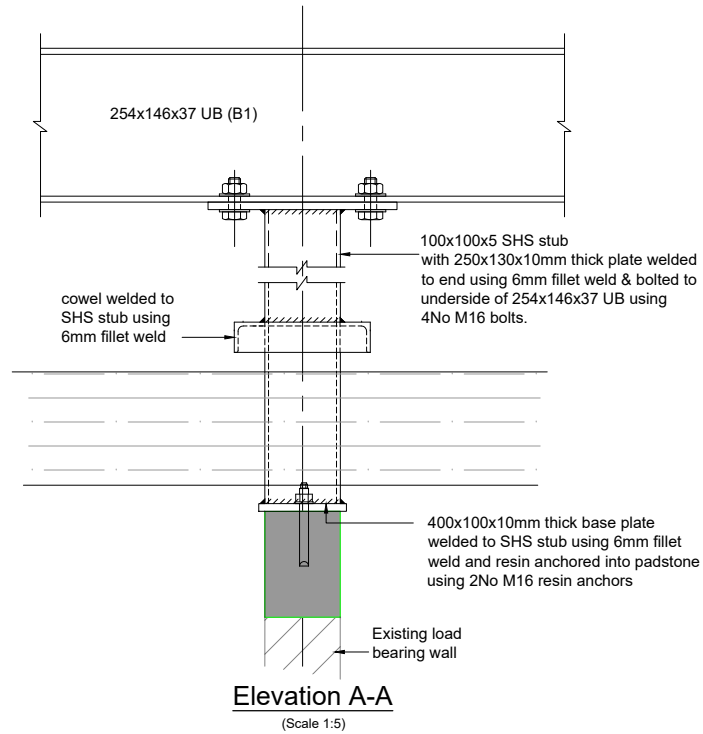
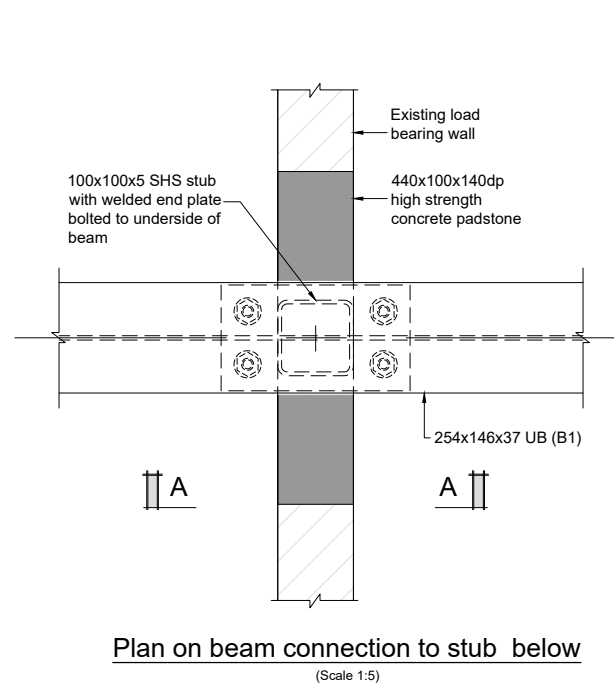
- |  |     |
|--|-----|
| 1. DO NOT ALLOW ANY LOADING/STORAGE ON ROOF. UNKNOWN ROOF CONSTRUCTION - ASSUMED TO BE BRITTLE E.G. WOODWOOL SLAB.                         | KAM |
| 2. POTENTIAL DAMAGE TO EXISTING ROOF LIGHTS.   |     |
| 3. REFER TO M&E DESIGN SPECIFICATIONS AND DRAWINGS, BY OTHERS, BEFORE RELOCATING/REMOVING EXISTING CABLES, SERVICES, PIPES, EQUIPMENT ETC. |     |
| 4. POTENTIAL RISK OF ASBESTOS, SEE ASBESTOS REPORT FOR DETAILS.  |     |
| 5. LIFTING GEAR TO BE USED WHERE REQUIRED.   |     |

**NOTES**

For steelwork notes refer to Dwg No 10416-001

**KEY**

- B1 - 254x146x37 UB beam
- B2 - 203x102x23 UB beam
- B3 - 80x80x4 SHS hot-finished strut
- C1 - 152x152x23 UC column
- VB - 80x80x4 SHS hot-finished strut
- PS - 440(1)x140(h)x100(w) Padstones by naylor  
- Span of open steel flooring type 41/100 with bars size 25x5mm by Barrett Steel all hot dip galvanised.



P1	PRELIMINARY ISSUE FOR COMMENT	GK	13.12.23	MP
Rev	Description	By	Date	Chkd



**TRENT COURT,  
STOCKPORT**

**PROPOSED PLANT ENCLOSURE  
DETAILS**

Status  
**PRELIMINARY**

Drawing No. <b>10416-003</b>		Revision <b>P1</b>			
Scale	Size	Drawn	Date	Chkd	Passed
1:5	A1	GK	DEC 23	MP	-