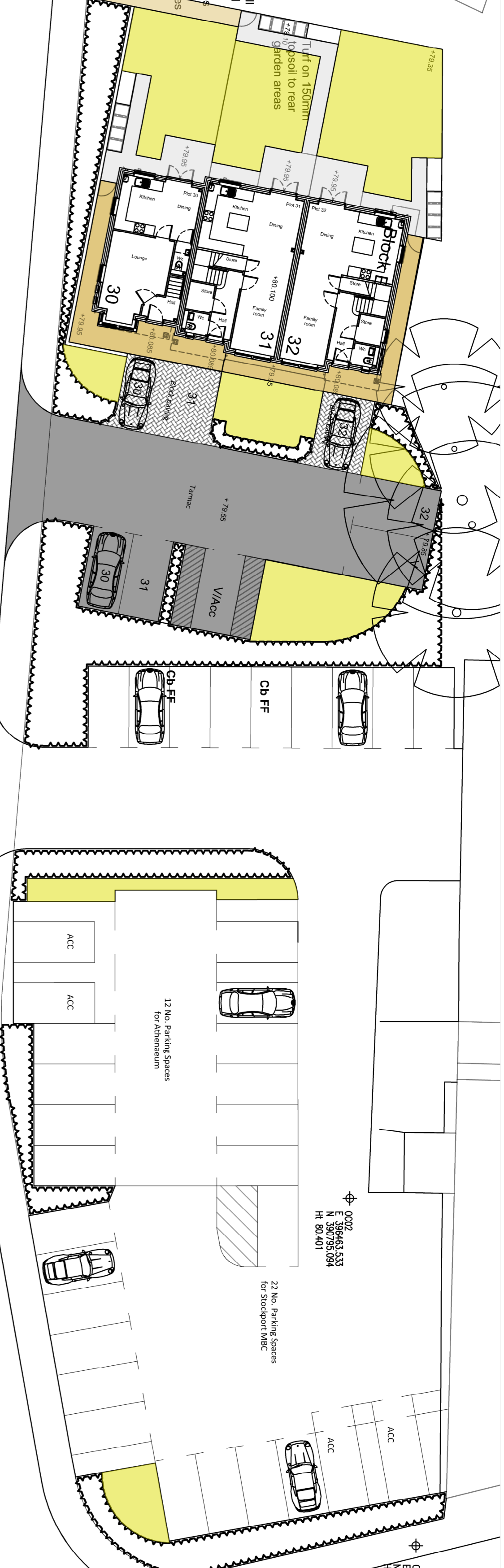
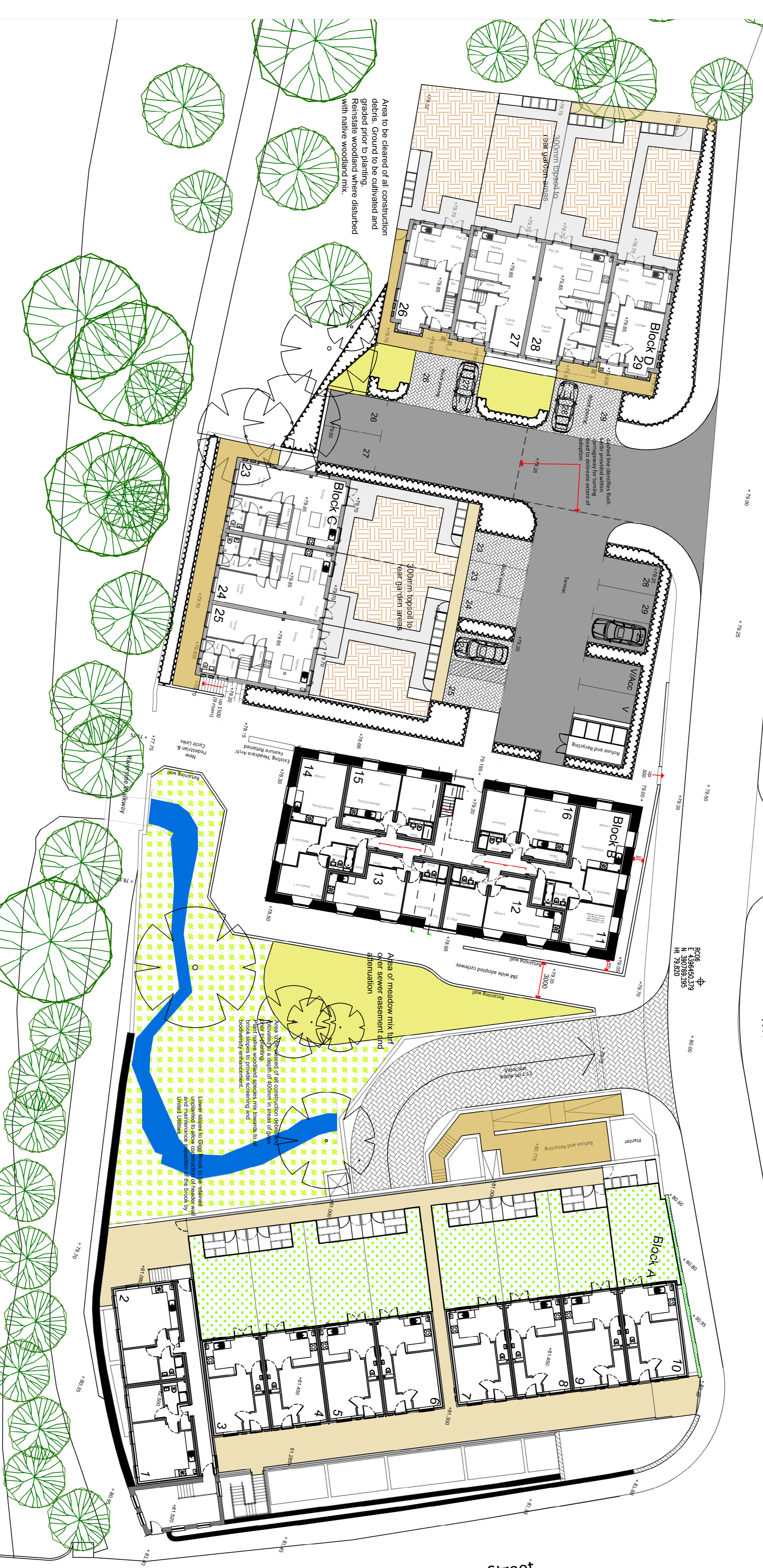


Area to be cleared of all construction debris and relocated to a depth of 400mm in areas of grass prior to planting. Specialist suppliers to be used for planting to gain an and provide screening.



Area to be cleared of all construction debris. Ground to be cultivated and reinstated woodland where disturbed with native woodland mix.



# Andrew Street, Compstall

## Topsoil, turfing & seeding plan

### KEY

- Existing trees retained
- Standard tree planting 12-14cm girth in 900mm diameter x 600mm deep tree pit with double staking
- Specimen shrub planting minimum 25L container, average 1-1.75m.
- Amenity and wildlife attracting shrubs. Refer to drawing 2437\_02 for planting details.
- Species rich meadow turf on 150mm depth of topsoil. Recommended supplier WFT, Landscape-34
- Seedier turfs to streamside. Recommended seed mix John Chambers Heritage Wet and Damp Soils 80% grass and 20% wildflower seed mix or equal approved.
- 300mm depth of topsoil to rear gardens
- Artificial grass - Ecograss supplied by Chesilite Artificial Grass
- Tarmacadam surfacing to vehicular standard specification
- Block paving surfacing to vehicular standard specification
- Unit paving to pedestrian specification around residential blocks
- Pedestrian surfacing around residential blocks

### REVISIONS

No.	Description	Date	By
C	Position cross updated	07/11/23	LAC
B	Address of artificial turfs now generic for Block A.	09/10/23	LAC
A	Address of turf and seed approved notes.	30/08/23	LAC



**Landscaping**  
Landscape Architects and Environmental Consultants

17 Clivity Old Road, Bolton BL1 3AD, Tel: 01204 393006.  
Web: www.oppletons.co.uk Email: info@oppletons.co.uk

Client: Werneth Construction Limited  
Date: May 2023  
Scale: 1:250  
Drawn: LAC  
Checked: OS  
Status: Revision C