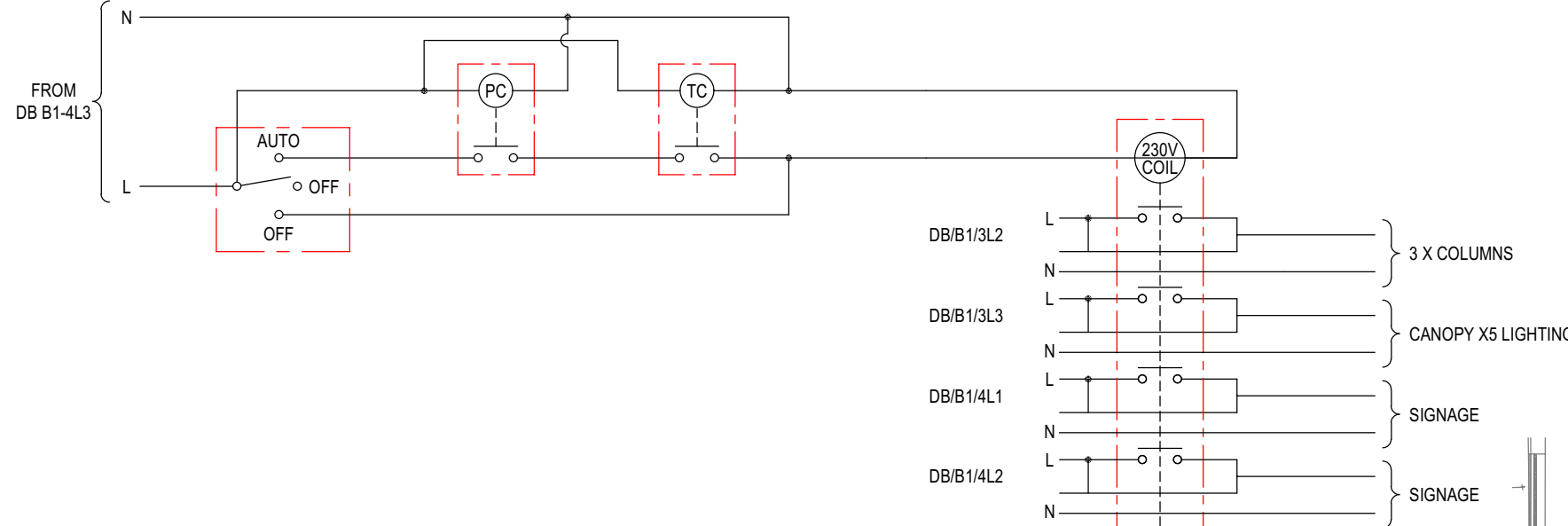
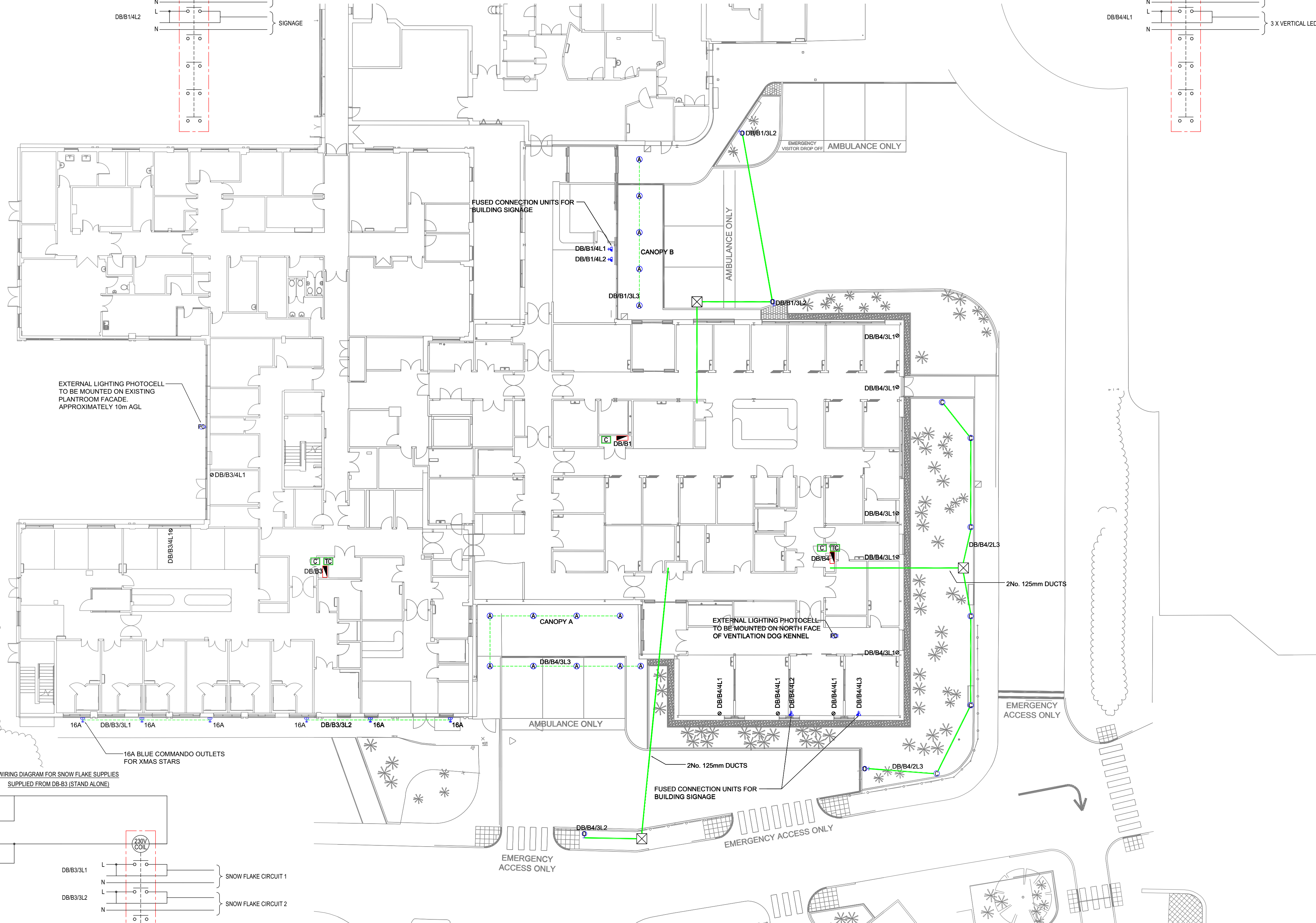
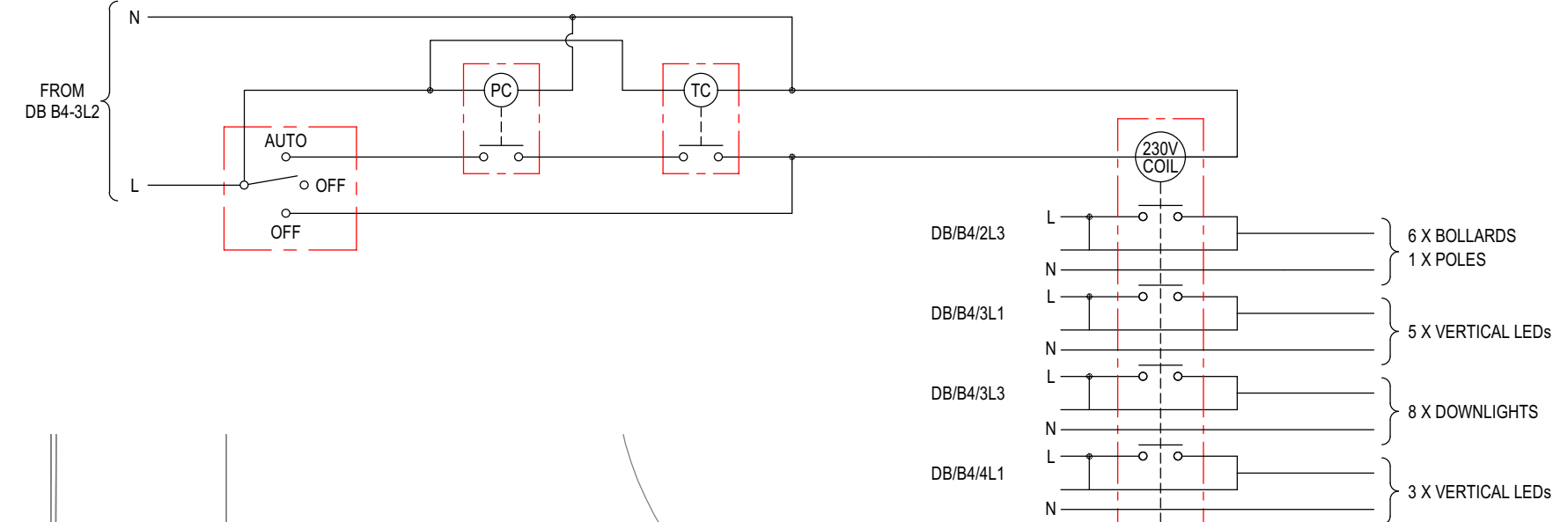




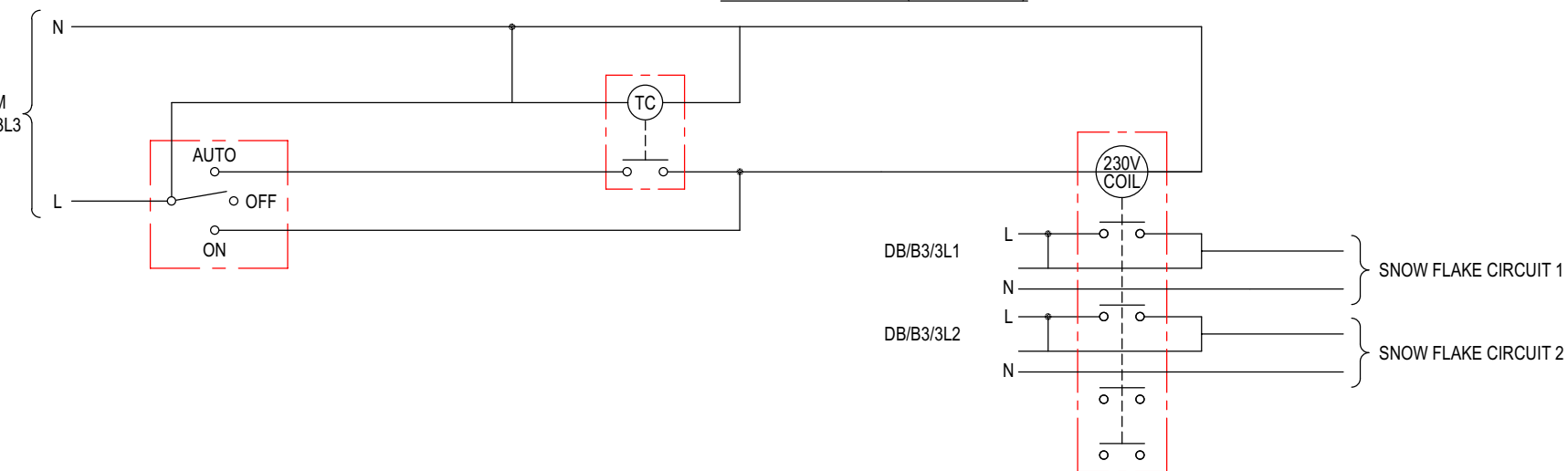
WIRING DIAGRAM FOR EXTERNAL LIGHTING CIRCUITS
SUPPLIED FROM DB-B1 (PC FROM B4)



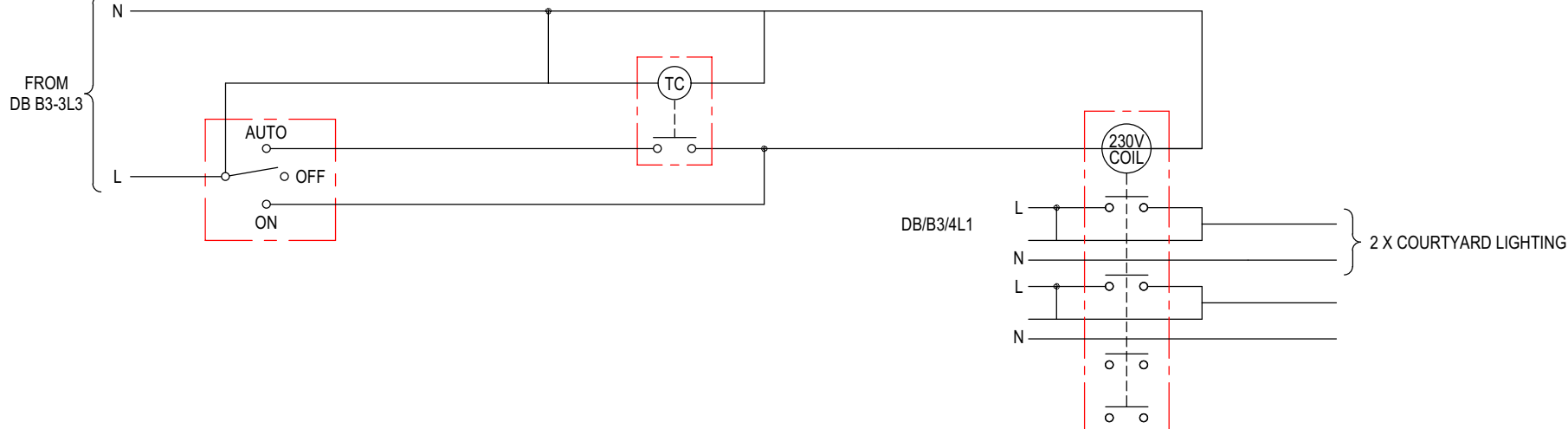
WIRING DIAGRAM FOR EXTERNAL LIGHTING CIRCUITS
SUPPLIED FROM DB-B4 (PC FROM ROOF THEN TO B1)



WIRING DIAGRAM FOR SNOW FLAKE SUPPLIES
SUPPLIED FROM DB-B3 (STAND ALONE)



WIRING DIAGRAM FOR EXTERNAL COURTYARD
SUPPLIED FROM DB-B3 (STAND ALONE)



NOTES
THIS IS A DESIGN DRAWING NOT AN INSTALLATION DRAWING. DIMENSIONS SHOULD NOT BE SCALED. SITE DIMENSIONS TO BE CHECKED BEFORE PRODUCTION OF CRITICAL MANUFACTURING DRAWINGS. THE DRAWING IS COPYRIGHT AND NO PART MAY BE REPRODUCED WITHOUT WRITTEN CONSENT.

- LEGEND:
- PHOTOCELL
 - 1000 FLEXIBLE PVC LIGHTING DUCT
 - SWITCHING CIRCUIT LINE
 - CABLE DRAW CHAMBER
 - WIRING POINT FOR EXTERNAL LIGHTING
 - EXTERNAL LIGHTING TIMECLOCK
 - EXTERNAL LIGHTING CONTACTOR

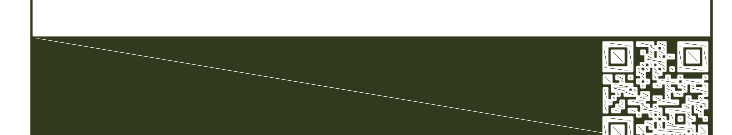
- NOTES:
1. THIS DRAWING IS TO BE READ IN CONJUNCTION WITH THE ELECTRICAL SERVICES SPECIFICATION AND ALL RELEVANT LAYOUT DRAWINGS ON SITE.
 2. FINAL POSITIONS OF ACCESSORIES TO BE AGREED ON SITE.
 3. ALL EQUIPMENT SHALL BE INSTALLED TO MANUFACTURER'S GUIDELINES AND RECOMMENDATIONS IN LINE WITH CURRENT BRITISH STANDARDS.
 4. ALL LUMINAIRES SHALL COME COMPLETE WITH ALL NECESSARY FIXINGS AND ATTACHMENTS TO FORM A COMPLETED INSTALLATION.
 5. ALL DETAILS PROVIDED WITHIN THIS DRAWING ARE TO BE CONFIRMED PRIOR TO THE BEGINNING OF THE WORKS. THE CONTRACTOR SHALL ALLOW FOR SITE INVESTIGATION AND ANY REQUIRED TESTING TO ASCERTAIN EXACT CIRCUIT DETAILS.
 6. EXTERNAL DUCTS TO BE INSTALLED IN ACCORDANCE WITH ALL GUIDELINES ON THE POSITIONING AND COLOUR CODING OF UNDERGROUND UTILITIES APPARATUS.

| | | | |
|--------|---------------------|----------|-------------------------|
| Rev | ISSUED FOR CONTRACT | | |
| C01 | By: AD | Chkd: GP | Date: 15/01/24 App: DMc |
| Status | Description | Stage | |
| S4 | CONTRACT ISSUE | 4 | |

Client
NHS
Doncaster and Bassetlaw Teaching Hospitals
NHS Foundation Trust

Project
DONCASTER AND BASSETLAW
NHS FOUNDATION TRUST
EMERGENCY CARE VILLAGE

Description
ELECTRICAL ENGINEERING SERVICES
EXTERNAL SERVICES
PROPOSED LAYOUT



CAD21 LTD
BUILDING SERVICES
ENERGY
CONSULTING ENGINEERS
NEWCASTLE & TEESSIDE & YORKSHIRE

| | | | |
|----------------|----------------------------|------|-----|
| Drawing Number | HG0049-CAD-XX-XX-DR-E-7901 | Rev | C01 |
| Scale | 1:150 | Size | A1 |

| Symbol | Quantity | Catalog Number | Description | Lamp | Lumens Per Lamp | Wattage |
|--------|----------|-------------------------|--|-----------|-----------------|---------|
| (A) | 18 | PBHD.ASR.8526368.02 | ASTER Medium Basic 1 LED (16W - 4000K) Wide 220-240V 50/60Hz | LED 4000K | 1105 | 14 |
| (B) | | NOT USED | NOT USED | NOT USED | | |
| (C) | 6 | DBD.1.LA014.DO.NR.W.011 | Denver ID Bollard 1m high c/w 900 Lm output and double sided NR Wide Spacing optic. Black Finish | LED 4000K | 976 | 11 |
| (D) | 4 | DPL.1.LA074.FW.W049 | Denver ID Pole c/w 7,000 Lm output and FW Forward Throw Optic on 6m Column. Black finish | LED 4000K | 8013 | 49 |