

**BAUDER**



**PHOTOVOLTAICS**

BAUDERSOLAR FLAT  
ROOF SYSTEM

# BAUDERSOLAR

## Photovoltaic Energy for Flat Roofs

**Modern construction projects, whether new build or refurbishment, call for solutions that are quick to install, efficient, competitive and low risk. The BauderSOLAR photovoltaic solution embraces all these criteria for flat roof PV projects and combines it with a waterproofing system to deliver a single source of responsibility and guarantee.**

The BauderSOLAR flat roof PV mounting solution is an aerodynamically optimised system for framed modules suitable for both new build and retrofit projects. The mounting units are secured to the roof using membrane-to-membrane welding techniques on our bituminous or single ply waterproofing systems. This installation method means that the roof is not compromised by penetrations for fixings nor is it ballasted, which would add additional weight loading to the roof.

Our combined solar array and waterproofing offer provides a single-source solution with clear accountability to reduce risk and bring peace of mind through all aspects of the flat roof.

### Key Features

- Risk-free installation due to penetration-free fixing methods to the flat roof waterproofing.
- Lightweight system 9-12.5Kg/m<sup>2</sup>, depending on the module selected.
- Aerodynamically optimised to reduce the impact of wind uplift.
- Low profile with modules set at 12° which can overcome some planning challenges.
- Single source for complete design of waterproofing and PV array with clear accountability.

### PV Partner

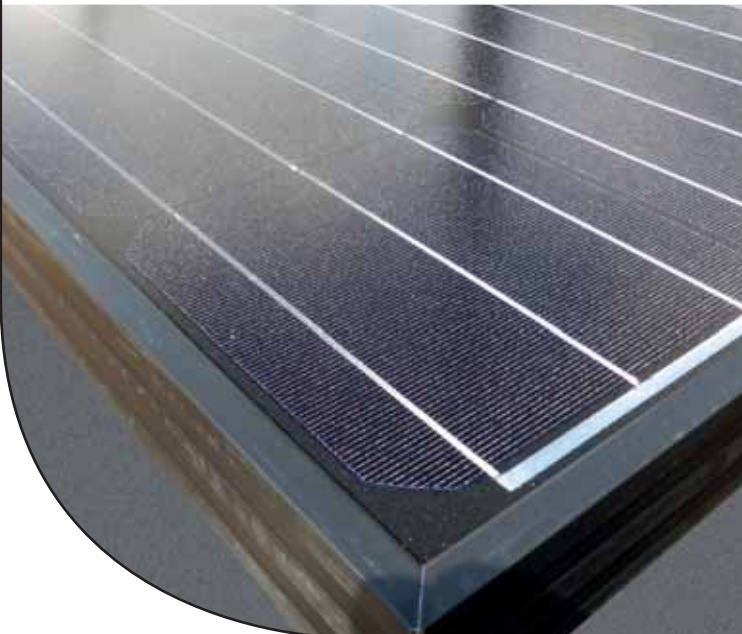
We provide the ultimate solution for our clients through our partnership with Aleo Solar as we trust their uncompromising quality standards to ensure that every module produced delivers the same quality output and high efficiency, alternatively we can also work with a client's preferred supplier to deliver the precise energy solution desired. Either way our ethos is to work so that every BauderSOLAR installation is as good as the next one.



### Secure Installation

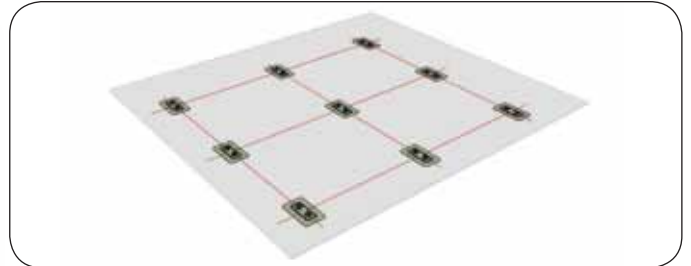
The distinctive element of our lightweight PV energy system is the pre-fabricated Bauder membrane sleeves which slip over the mounting plates and are welded in to position, anchoring the plates to the surface of the Bauder waterproofing system. Once this is completed, the rest of the PV installation is simply locked in to place without any requirement for tools or sharp fixings.

The attachment of the mounting components is very stable so that even in extreme weather the entire array is secure on the roof. Any minor movement of the panels, which is generally created by wind uplift, is easily tolerated and does not affect the fixings, or waterproofing system.



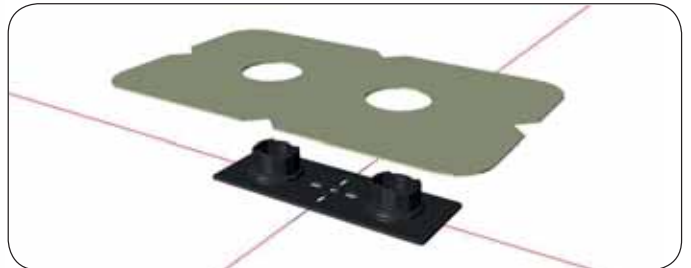


## BAUDERSOLAR FLAT ROOF INSTALLATION



### 1. Positioning the Base Plates

The baseplates are plotted and measured out to ensure correct positioning according to the array design.



### 2. Attaching to Roof Surface

The waterproofing membrane sleeves are placed over each of the base plates and welded into position.



### 3. Installing the Substructures

The substructures are positioned over the mounting plates and locked into place.



### 4. Placement of the PV Modules

The PV modules are placed on to the substructure mounting system and secured.

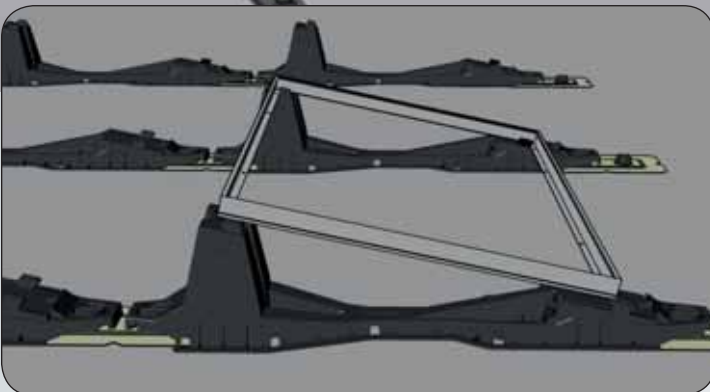
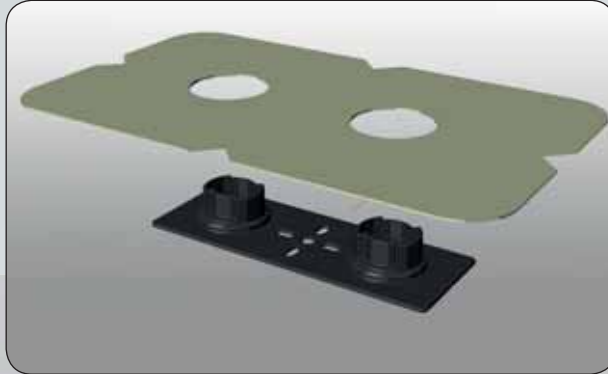
### Service

Bauder's waterproofing systems deliver the highest quality membranes and uniting these with our BauderSOLAR Solution for flat roofs ensures that you receive the best solution for your rooftop solar array.

We will work with you through the entire process from consultation and initial site survey, bespoke specification for the waterproofing system and design the PV array to maximise output for the roof's orientation. The specification package and service you will receive will encompass every element of the roof, including detail design, wind uplift calculations, site monitoring and inspection, and handover to the client with full guarantee.

### Quality Assurance

Our approved contractors, engineers and installers are the only people fully trained and certified to install our products and rooftop solutions as excellent workmanship is crucial to the conditions of the guarantee that accompanies the Bauder roof.



**BAUDER**

**UNITED KINGDOM**

**Bauder Limited**

70 Landseer Road, Ipswich, Suffolk IP3 0DH,  
England

**T: +44 (0)1473 257671 E: info@bauder.co.uk**  
[bauder.co.uk](http://bauder.co.uk)

**IRELAND**

**Bauder Limited**

O'Duffy Centre, Carrickmacross, Co. Monaghan,  
Ireland

**T: +353 (0)42 9692 333 E: info@bauder.ie**  
[bauder.ie](http://bauder.ie)