

PROJECTING SIGNAGE

INO. REQUIRED

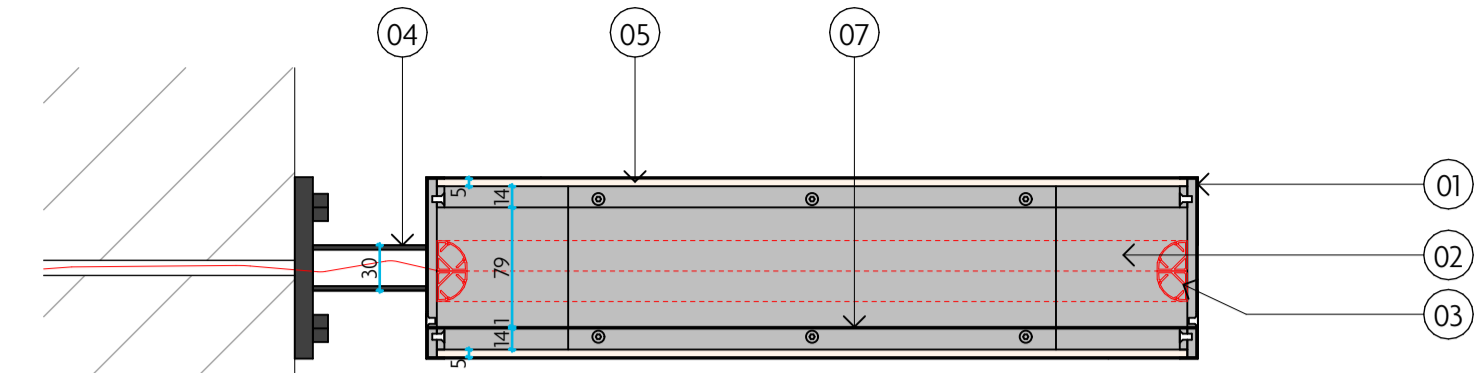
DETAIL DRAWING NOTES:

- 01 EXTERNAL SHELL TO PROJECTING SIGN TO BE FORMED IN 1MM THICK ALUMINIUM SHEET, TO RECEIVE BLACKENED POWDER COAT FINISH, COLOUR TBC.
- 02 INTERNAL FRAME TO BE FORMED IN 6MM THICK ALUMINIUM PLATE, WELDED TO FORM SHAPE OF SIGNAGE. LOWER SECTION TO REMAIN HOLLOW TO ALLOW FOR DRIVER STORAGE.
- 03 SIGNAGE TO BE INTERNALLY ILLUMINATED USING 2500K WARM WHITE OR WARMER LED'S. MAINS FEED TO DRIVER TO BE FED THROUGH SUPPORT ARM.
- 04 12MM ALUMINIUM POWDER COATED MOUNTING PLATE WITH 30X30MM ALUMINIUM SUPPORT ARM. SUPPORT PLATE TO BE FIXED TO BUILDING FACADE USING COLOUR MATCHED COACH BOLTS.
- 05 SIGNAGE PANELS TO BE FORMED USING 5MM THICK ACRYLIC, LASER CUT TO FORM SHAPE OF BLADE SIGNAGE AND HELD IN PLACE USING COUNTERSUNK MACHINE SCREWS IN ALUMINIUM BEAD AS INDICATED.
- 06 SIGN WRITTEN TEXT TO BE APPLIED TO ACRYLIC PANELS, BY SIGN WRITER.
- 07 BLACK RUBBER SEAL, TO PREVENT WATER INGRESS, TO BE USED WHERE SIGN MACHINE SCREWS TOGETHER.

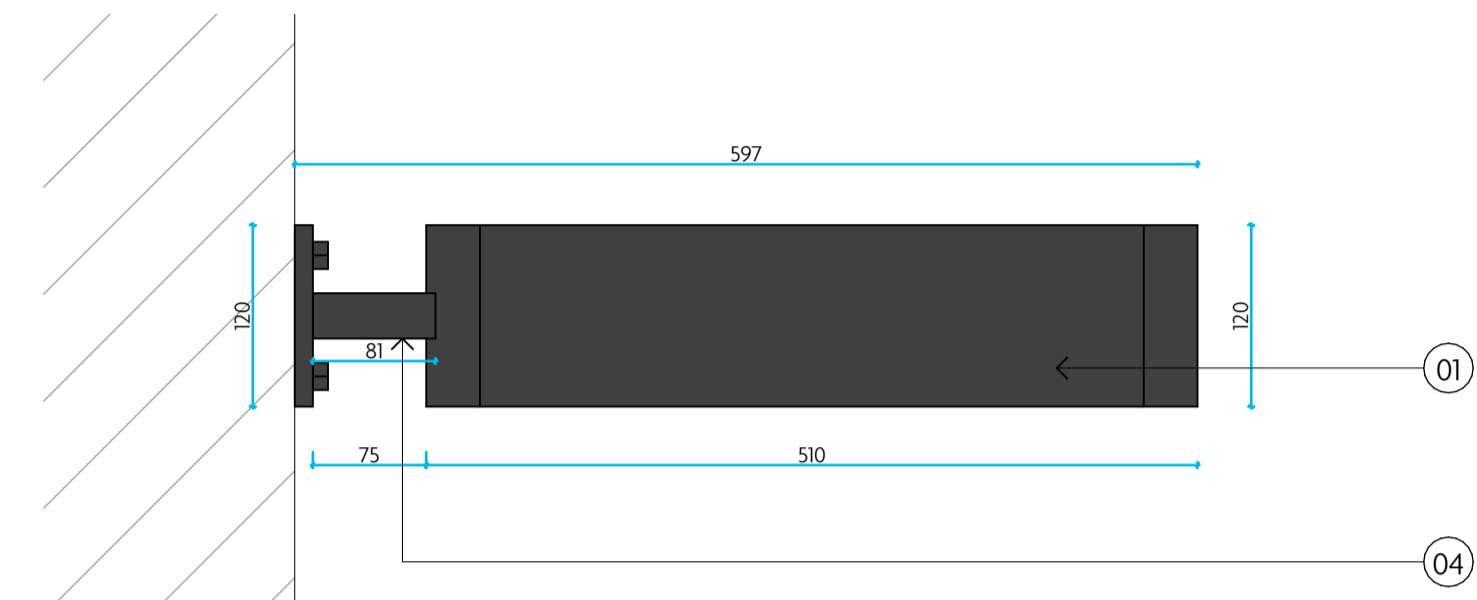
THE CONTRACTOR SHALL TAKE THEIR OWN DIMENSIONS AND SHALL BE RESPONSIBLE FOR THE ACCURATE ADJUSTMENT OF ANY FITTING TOGETHER OF VARIOUS PARTS

ALL WORKS TO BE CARRIED OUT IN ACCORDANCE WITH THE CURRENT BRITISH STANDARDS, B.S. CODES OF PRACTICE AND BUILDING REGULATIONS

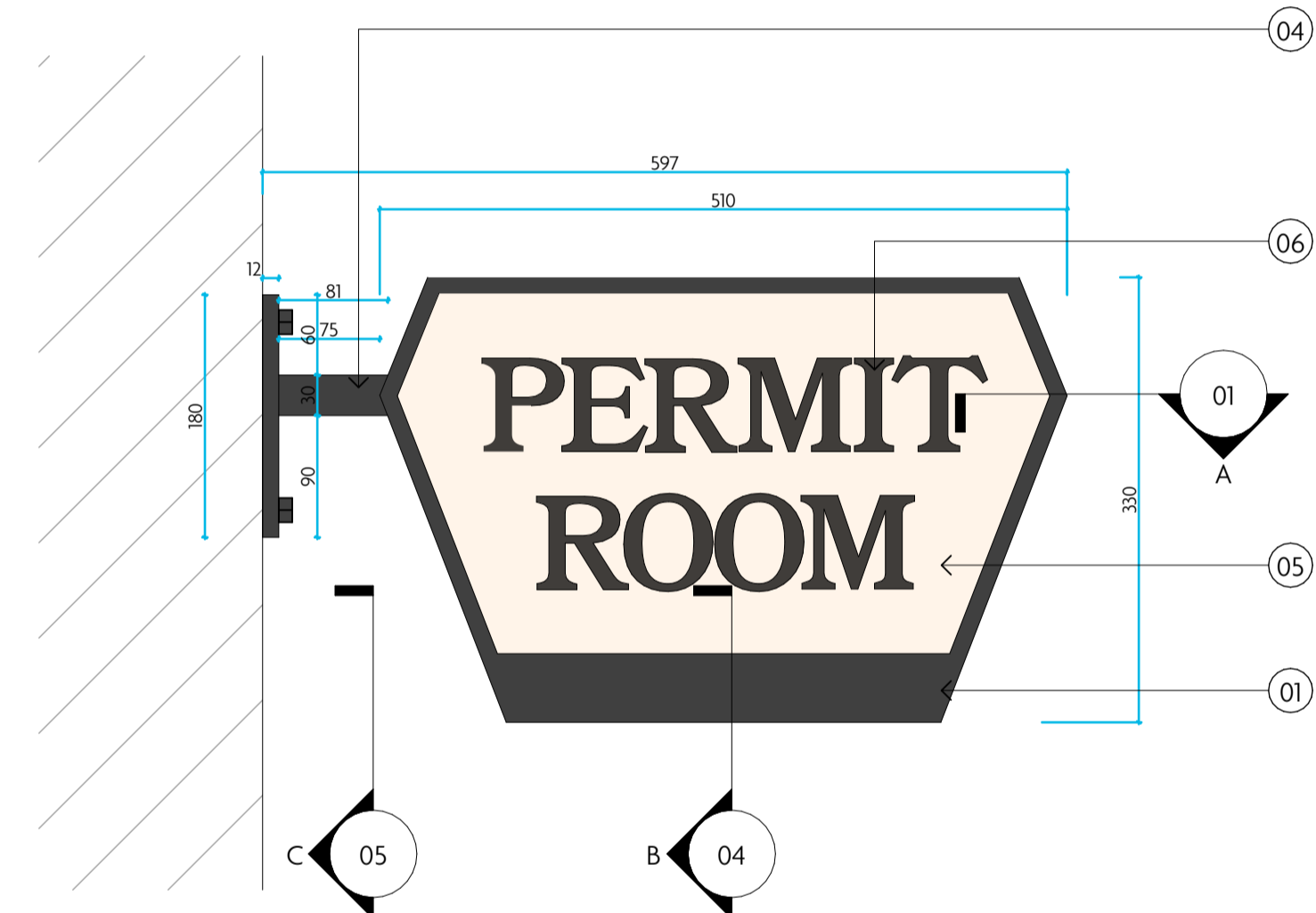
SAMPLES OF ALL MATERIALS TO BE SUPPLIED BY MAIN CONTRACTOR FOR APPROVAL BY MACAULAY SINCLAIR PRIOR TO ORDER. ANY NATURAL COUNTER FINISHES TO HAVE SUITABLE STAIN IMPREGNATOR



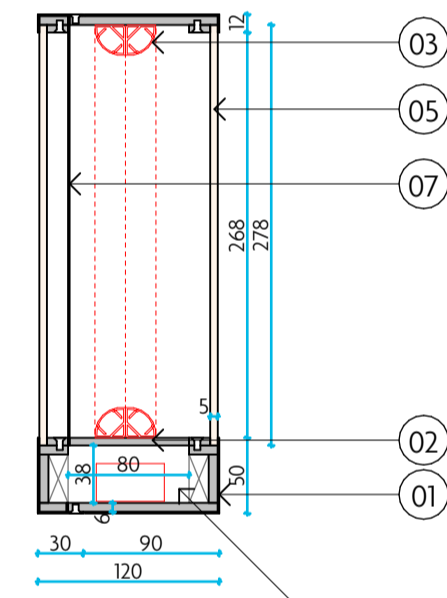
01 SECTION A-A
1:5 @ A1



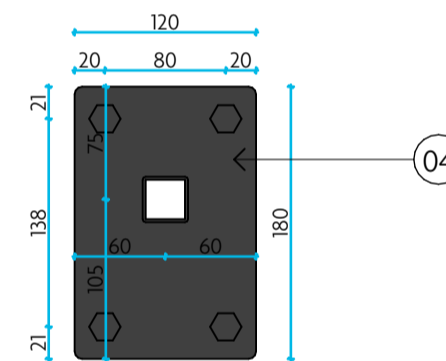
02 PLAN
1:5 @ A1



03 FRONT ELEVATION
1:5 @ A1



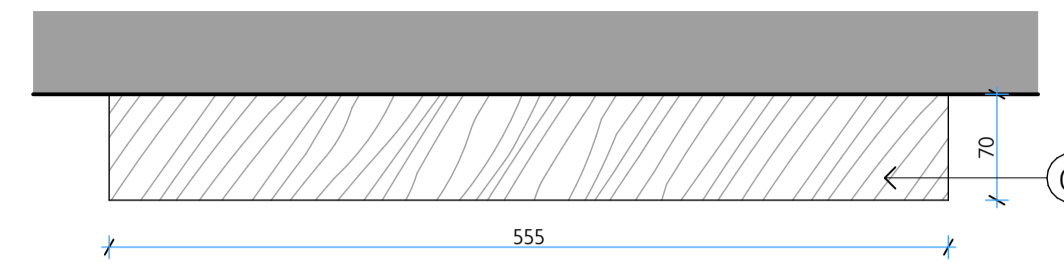
04 SECTION B-B
1:5 @ A1



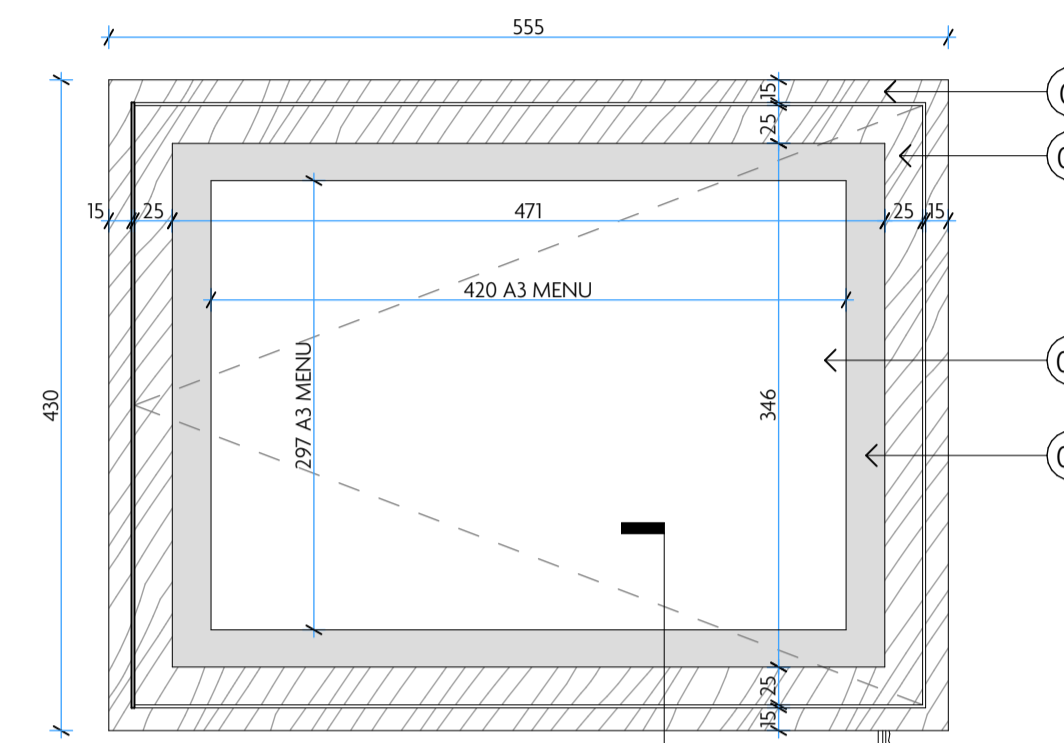
05 SECTION C-C (BRACKET)
1:5 @ A1

MENU CASE

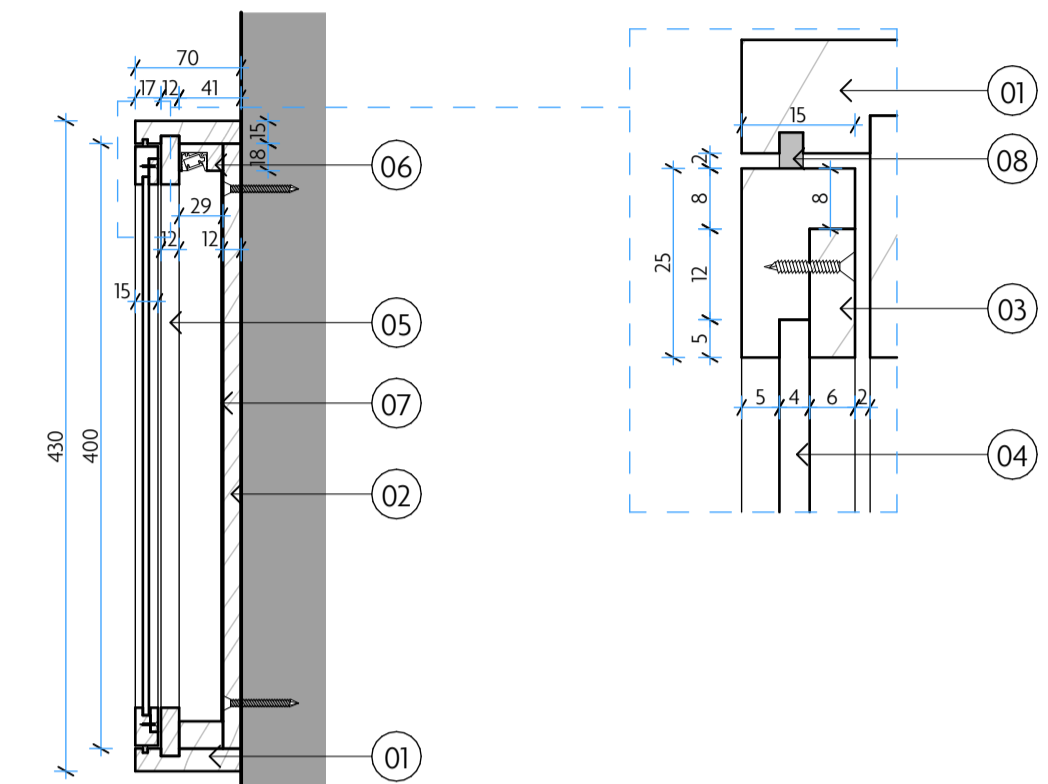
INO. REQUIRED



06 FRONT ELEVATION
1:5 @ A1



07 FRONT ELEVATION
1:5 @ A1

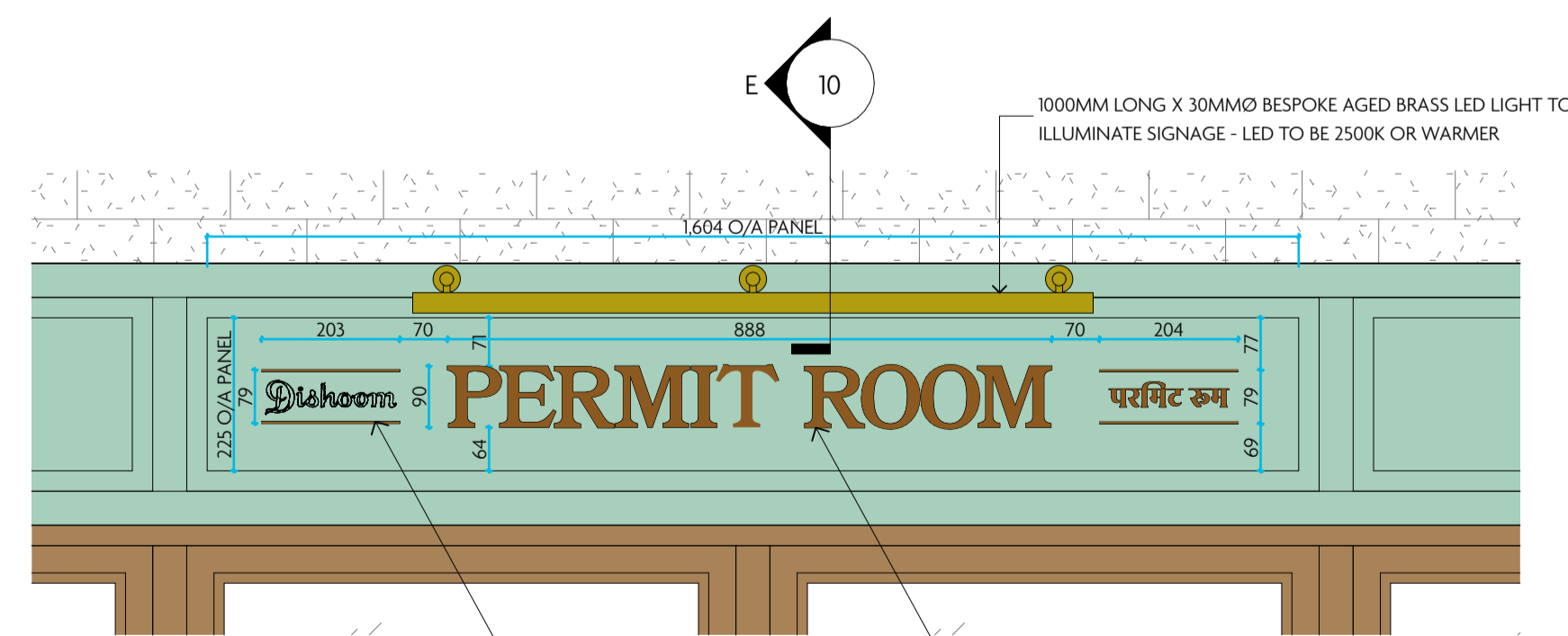


08 SECTION D-D
1:5 @ A1

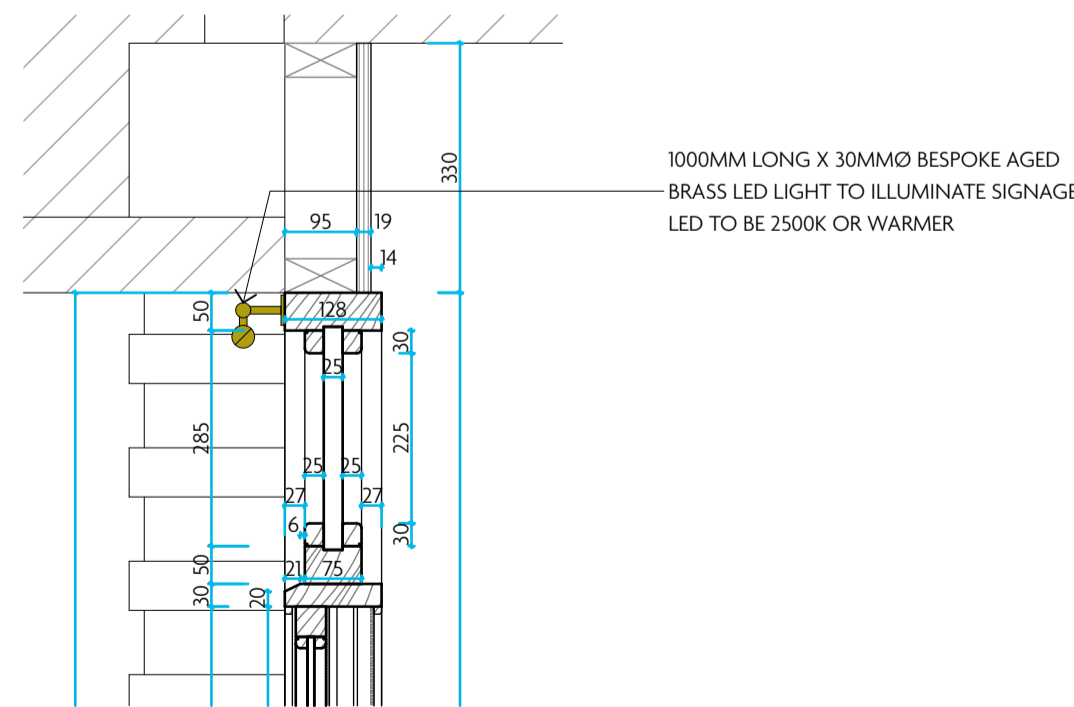
DETAIL DRAWING NOTES:

- 01 EXTERNAL CASE TO BE FORMED IN 70X15MM THICK SOLID IROKO, STAINED TO APPROVED SAMPLE.
- 02 BACK BOARD FORMED IN 12MM THICK SOLID IROKO, REBATED INTO EXTERNAL CASE, STAINED TO APPROVED SAMPLE.
- 03 DOOR FORMED IN 25X15MM THICK SOLID IROKO, MITRED JOINTS TO CORNERS. FRAME REBATED TO ALLOW FOR VISION PANEL AND GLAZING BEAD AS SHOWN IN PULL OUT DETAIL. DOOR TO SWING ON UNLACQUERED BRASS PIANO HINGE AND TO BE LOCKABLE FROM UNDERNEATH TO HIDE CABINET LOCK. LOCK TO BE BRASS FINISH.
- 04 VISION PANEL FORMED IN 4MM THICK CLEAR PERSPEX.
- 05 12MM THICK SOLID IROKO DOOR STOP, REBATED INTO EXTERNAL FRAME, STAINED TO APPROVED SAMPLE.
- 06 18X29MM THICK SOLID IROKO LED PACKER, MACHINED TO RECEIVE ANGLES ALUMINIUM LED CHANNEL FROM HAFELE OR SIMILAR. DRIVER FOR LED'S TO BE INSIDE RESTAURANT.
- 07 BACK PANEL TO BE COVERED IN BAIZE FABRIC, COLOUR TO BE SAMPLED. MENU WILL PIN DIRECTLY TO BACK BOARD.
- 08 RUBBER SEAL TO PREVENT WATER INGRESS AROUND PERIMETER OF DOOR.

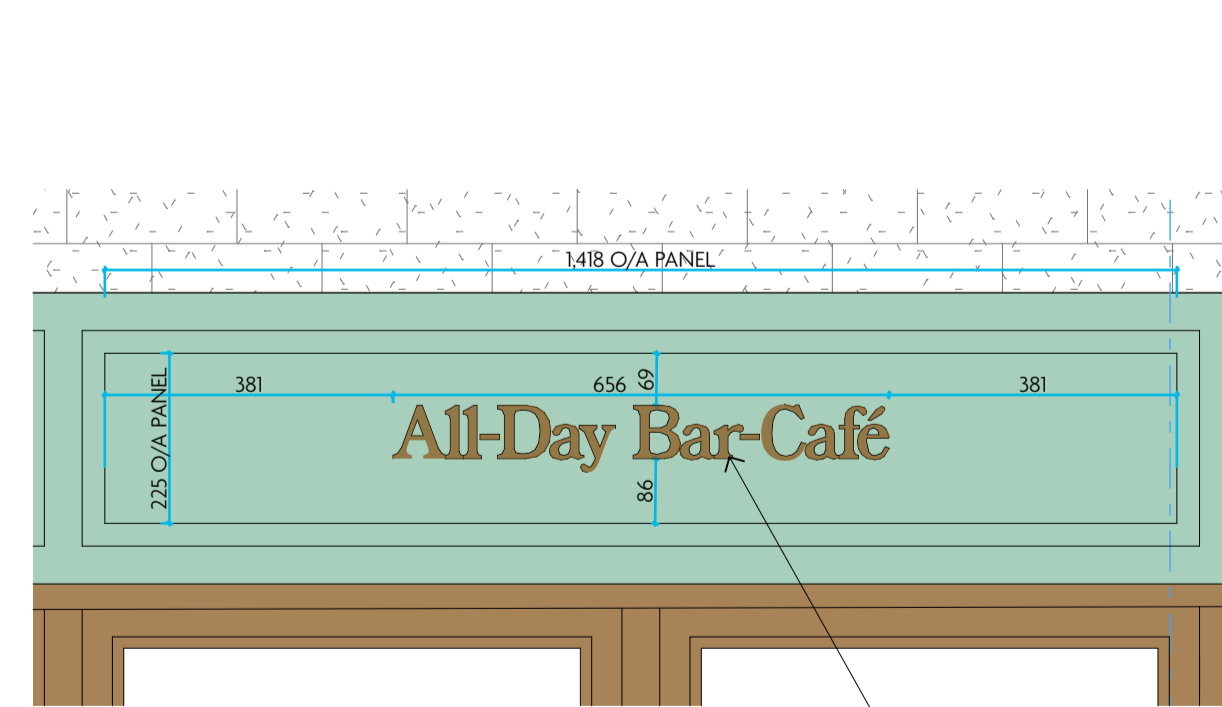
SIGN WRITTEN SIGNAGE



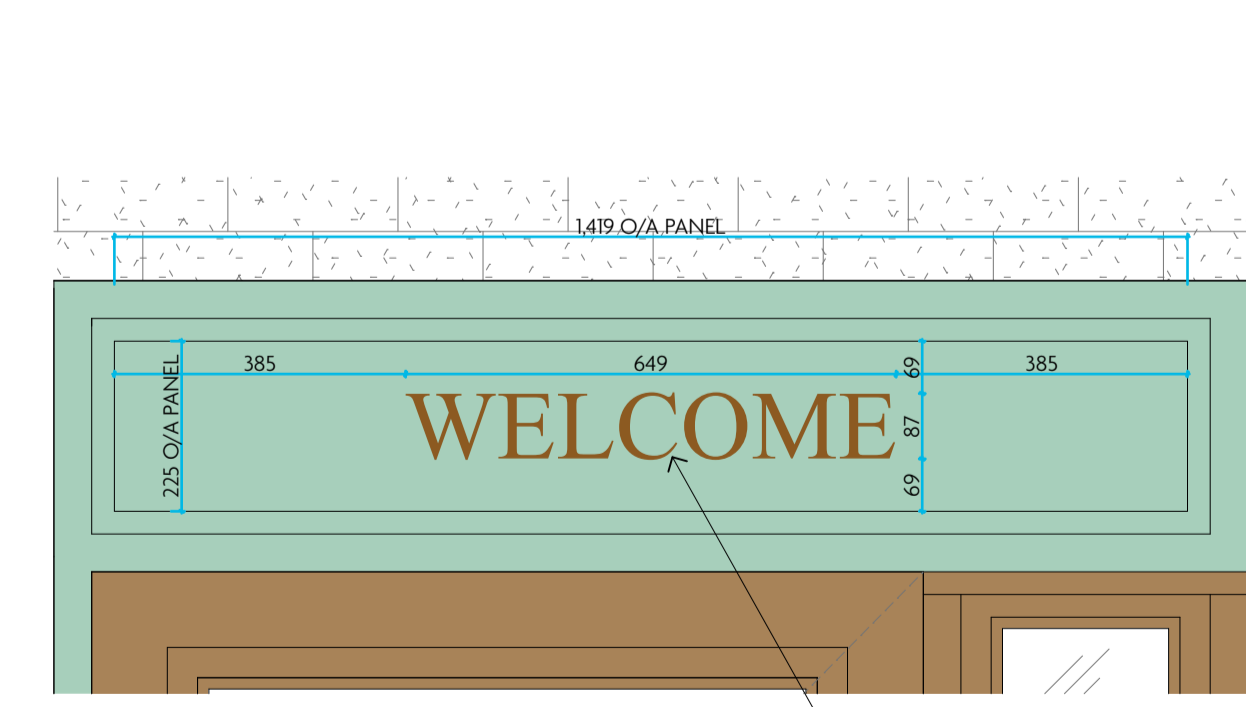
09 MAIN SIGNAGE
1:10 @ A1



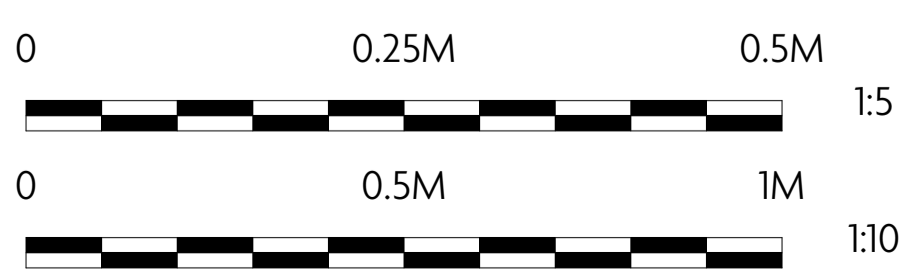
10 SECTION E-E
1:10 @ A1



11 SIGNAGE TO LOBBY SIDE
1:10 @ A1



12 MAIN ENTRANCE SIGNAGE
1:10 @ A1



REV DATE REASON

REV DATE REASON

NOTES

Do not scale from this drawing. All dimensions to be checked on site prior to any manufacture and construction.

Copyright Reserved

Macaulay Sinclair

PROJECT Permit Room, Oxford
TITLE Proposed Signage
SCALE @ A1
DATE 14.03.2024
DRAWN BY JG
+44 (0)1135 950 7313
STUDIO@MACAULAYSINCLAIR.COM
MACAULAYSINCLAIR.COM

PROJ. NO. 3819
DWG. NO. 03(04)
REV A
STATUS PLANNING